

## **SECTION 2: PART A**

### **SERVICE SPECIFICATION FOR ROUTE Nos. 253 & N253**

#### **CONTENTS**

	Page
1. Tenders Required	2
2. Proposed Changes	2
3. Terminals	3
4. Days of Operation	3
5. Vehicle Type	4
6. Frequencies	5
7. Minimum Performance Standards	12
8. Running Times	13
9. Layovers	13
10. Timing Constraints	14
11. Control Strategy	14
12. Operational Considerations	15
13. Stopping Arrangements	15
14. Timing Points and Mileages	16
15. Vehicle Livery	16
 <u>Appendices</u>	
A. Route Record	17
B. Sample Running Times for Route Nos. 253 & N253	29

---

**This document should be read in conjunction with the Corporation's Guide for Tenderers (Part A: Explanatory Notes - Service Requirements). Where appropriate, reference is made to the relevant section.**

## 1. TENDERS REQUIRED

This document describes the service for which the Corporation requires Tenders and Tenderers **must** submit a fully compliant bid. In addition, Tenderers **may** wish to draw upon their local knowledge to submit alternative bids which offer improved value for money in meeting passenger needs. These might incorporate, for example, different timings, frequencies, route structures and / or vehicles. The Corporation will welcome such bids and give them careful consideration.

For more information, please refer to Section 2.1 of Part A of the Guide for Tenderers.

## 2. PROPOSED CHANGES

At this time, the Corporation expects to implement a change to the existing service prior to the commencement of the new Route Agreement for Route Nos. 253 & N253.

- Weekend night frequencies are increased from every 15 minutes to every 12 minutes.

Tenderers should note that the following alterations (subject to consultation) are proposed as part of this Service Specification for introduction with the new Route Agreement:

- Mondays to Fridays PM peak frequencies from every 5½ minutes to every 5 minutes.
- Re-timing of Route No. N253 to better interwork with Route No. 253.
- First departure on Route No. 253 ex Euston Bus Station is re-timed from 0515 to 0525. 0515 departure is covered by Route No. N253.
- Double deck, dual door, 87 capacity vehicles are specified, subject to a satisfactory route test.
- Route No. 253 is extended to Ash Grove Garage. Buses will stand in the garage and set down and pick up at stops outside the garage.
- The short working journeys on Route No. 253 between Hackney Central Station, Amhurst Road and Stamford Hill, Clapton Common and Euston Bus Station and Stamford Hill, Clapton Common and Hackney Central Station, Mare Street are withdrawn.
- The short working journeys on Route No. N253 between Stamford Hill, Clapton Common and Tottenham Court Road Station and Stamford Hill, Clapton Common and Aldgate Station are withdrawn.
- There are a number of projects which may affect bus services in the Tottenham Court Road area. As a result, Tottenham Court Road Station, Andrew Borde Street stand and Tottenham Court Road Station, St. Giles High Street stand are not available for curtailments and have been deleted from the route record.
- **Tenderers must identify the cost of the Nightly element of this service separately.**

### 3. TERMINALS

Route No. 253 will operate between Cambridge Heath, St. Josephs Hospice and Euston Bus Station.

Route No. N253 will operate between Aldgate and Tottenham Court Road Station, Tottenham Court Road.

Full details of the route to be followed, the permitted terminal workings and the available stands are shown at Appendix A. Tenderers should particularly note the information relating to the shared usage of stands, the taking of meal reliefs and the use of ferry vehicles.

### 4. DAYS OF OPERATION

One timetable must be offered for Route Nos. 253 & N253 which will operate as follows:

DAY OF OPERATION	
Mondays to Fridays	Section 6.1
Saturdays & Good Friday	Section 6.2
Sundays	Section 6.3
Christmas Day	No service
Boxing Day	Section 6.4
Other Public Holidays	Sunday service
Sunday nights/Monday mornings to Thursday nights/Friday mornings	Section 6.6
Friday nights/Saturday mornings to Saturday night/Sunday morning	Section 6.7
New Year's Eve night/ New Year's Day morning*	Friday nights/Saturday mornings to Saturday night/Sunday morning
Christmas Eve night/Christmas Day morning	No service
Christmas Day night/Boxing Day morning	No service

\* The New Year's Eve service level should be regarded as a minimum and any frequency increases and/or diversions will be discussed with the successful Tenderer on an annual basis.

## 5. VEHICLE TYPE

Please refer to Section 2.5 of Part A of the Guide for Tenderers.

Route Nos. 253 & N253 are currently approved for vehicles which are a maximum of 10.2 metres long and 2.55 metres wide. A formal route test will be required for vehicles which exceed these dimensions. This will be arranged with the successful Tenderer.

The service requirement set out in Section 6 assumes that dual door, double deck buses with a minimum capacity of 87, of which approximately 60 should be seated, will be used on this route. Luggage space should also be provided.

Tenderers must submit proposals based on new vehicles. These must be of a low floor design and be accessible to wheelchairs by means of a powered ramp.

**Bids for both conventional diesel powered vehicles and diesel-electric hybrid vehicles should be submitted and separate prices for both types are required.**

**Bids based on a mix of hybrid and conventional vehicles would be welcomed, subject to a minimum of 10 hybrid powered vehicles being offered for this route (full hybrid operation should be offered for routes with a vehicle requirement of less than 10).**

Tenderers should refer to the vehicle design (including accessibility) features contained in Schedule II to Annex B of the Framework Agreement and Section 2 Part B of the Master ITT (Version 2 issued June 2005).

Tenderers may also submit bids based on using existing vehicles. Tenderers are asked to specify what refurbishment would be carried out on existing buses and the expected timescale of those works. See Master ITT (Version 2 issued June 2005).

## 6. FREQUENCIES

The level of service (e.g. every 15 minutes) required by the Corporation is described in terms of the interval between departures. Whilst a completely regular service at the specified frequency should be possible at most times, occasionally a bus may be timetabled to depart up to five minutes earlier or later than the regular time.

Tenderers should note that when the specified frequency changes (e.g. between the peak and midday periods), the scheduled interval between buses should never be greater than that provided by the lower of the two frequencies **AT ANY POINT ON THE ROUTE**.

Tenderers should note that unless otherwise stated **all** journeys should operate between the terminal points defined in each direction.

## 6.1 Mondays to Fridays

### 1. Cambridge Heath, St. Josephs Hospice to Euston Bus Station

0500 - 0555	Every 10 minutes
0556 - 0620	Every 7 minutes
0621 - 0645	Every 6 minutes
0646 - 0745	Every 5 minutes
0746 - 0845	Every 4-5 minutes (13 buses per hour)
0846 - 0930	Every 5 minutes
0931 - 1335	Every 5-6 minutes (11 buses per hour)
1336 - 1750	Every 5 minutes
1751 - 1815	Every 5-6 minutes (11 buses per hour)
1816 - 1925	Every 6-7 minutes (9 buses per hour)
1926 - 0010	Every 8 minutes

First departure from Cambridge Heath, St. Josephs Hospice no later than 0505.  
Last departure from Cambridge Heath, St. Josephs Hospice no earlier than 0005.

Tenderers should ensure that buses are scheduled to be no more than 5 minutes apart at Camden Road, Brecknock Road between 0725 and 0925 and between 1505 and 1635.

### 2. Euston Bus Station to Cambridge Heath, St. Josephs Hospice

0520 - 0615	Every 10 minutes
0616 - 0650	Every 6 minutes
0651 - 1030	Every 5 minutes
1031 - 1440	Every 5-6 minutes (11 buses per hour)
1441 - 1820	Every 5 minutes
1821 - 1850	Every 5-6 minutes (11 buses per hour)
1851 - 1950	Every 6-7 minutes (9 buses per hour)
1951 - 0040	Every 8 minutes

First departure from Euston Bus Station no later than 0525.  
Last departure from Euston Bus Station no earlier than 0035.

Tenderers should ensure that buses are scheduled to be no more than 5 minutes apart at Manor House Station between 0710 and 0910 and between 1510 and 1630.

## 6.2 Saturdays & Good Friday

### 1. Cambridge Heath, St. Josephs Hospice to Euston Bus Station

0500 - 0635	Every 10 minutes
0636 - 0720	Every 8 minutes
0721 - 0805	Every 6 minutes
0806 - 1820	Every 5-6 minutes (11 buses per hour)
1821 - 0010	Every 8 minutes

First departure from Cambridge Heath, St. Josephs Hospice no later than 0505.  
Last departure from Cambridge Heath, St. Josephs Hospice no earlier than 0005.

Tenderers should ensure that buses are scheduled to be no more than 6 minutes apart at Camden Road, Brecknock Road between 0840 and 1105.

### 2. Euston Bus Station to Cambridge Heath, St. Josephs Hospice

0520 - 0635	Every 10 minutes
0636 - 0820	Every 8 minutes
0821 - 0845	Every 6 minutes
0846 - 1845	Every 5-6 minutes (11 buses per hour)
1846 - 0040	Every 8 minutes

First departure from Euston Bus Station no later than 0525.  
Last departure from Euston Bus Station no earlier than 0035.

Tenderers should ensure that buses are scheduled to be no more than 6 minutes apart at Manor House Station between 0910 and 1110.

### 6.3 Sundays

1. Cambridge Heath, St. Josephs Hospice to Euston Bus Station

0500 - 0745	Every 10 minutes
0746 - 0010	Every 8 minutes

First departure from Cambridge Heath, St. Josephs Hospice no later than 0505.  
Last departure from Cambridge Heath, St. Josephs Hospice no earlier than 0005.

Tenderers should ensure that buses are scheduled to be no more than 8 minutes apart at Camden Road, Brecknock Road between 1010 and 1140.

2. Euston Bus Station to Cambridge Heath, St. Josephs Hospice

0520 - 0835	Every 10 minutes
0836 - 0040	Every 8 minutes

First departure from Euston Bus Station no later than 0525.  
Last departure from Euston Bus Station no earlier than 0035.

Tenderers should ensure that buses are scheduled to be no more than 8 minutes apart at Manor House Station between 1020 and 1150.



## 6.4 Boxing Day

### 1. Cambridge Heath, St. Josephs Hospice to Euston Bus Station

0805 - 0020              Every 8 minutes

First departure from Cambridge Heath, St. Josephs Hospice no later than 0810.  
Last departure from Cambridge Heath, St. Josephs Hospice no earlier than 0015.

Tenderers should ensure that buses are scheduled to be no more than 8 minutes apart at Camden Road, Brecknock Road between 1010 and 1140.

### 2. Euston Bus Station to Cambridge Heath, St. Josephs Hospice

0820 - 0835              Every 10 minutes  
0836 - 0040              Every 8 minutes

First departure from Euston Bus Station no later than 0825.  
Last departure from Euston Bus Station no earlier than 0035.

Tenderers should ensure that buses are scheduled to be no more than 8 minutes apart at Manor House Station between 1020 and 1150.

**6.5 Sunday nights/Monday mornings to Thursday nights/Friday mornings**

1. Aldgate Bus Station to Tottenham Court Road Station, Tottenham Court Road

2400 - 0455              Every 15 minutes

First departure from Aldgate Bus Station no later than 0005.

Last departure from Aldgate Bus Station no earlier than 0450.

2. Tottenham Court Road Station, Tottenham Court Road to Aldgate Station

0035 - 0515              Every 15 minutes

First departure from Tottenham Court Road Station, Tottenham Court Road no later than 0040.

Last departure from Tottenham Court Road Station, Tottenham Court Road no earlier than 0510.

**Tenderers must identify the cost of the Nightly element of this service separately.**

**6.6 Friday nights/Saturday morning to Saturday nights/Sunday mornings**

1. Aldgate Bus Station to Tottenham Court Road Station, Tottenham Court Road

2400 - 0455              Every 12 minutes

First departure from Aldgate Bus Station no later than 0005.

Last departure from Aldgate Bus Station no earlier than 0450.

2. Tottenham Court Road Station, Tottenham Court Road to Aldgate Station

0035 - 0515              Every 12 minutes

First departure from Tottenham Court Road Station, Tottenham Court Road no later than 0040.

Last departure from Tottenham Court Road Station, Tottenham Court Road no earlier than 0510.

**Tenderers must identify the cost of the Nightly element of this service separately.**

## 7. MINIMUM PERFORMANCE STANDARDS

Please refer to Section 2.7 of Part A of the Guide for Tenderers.

Tenderers should note that the objective of the Operator of Route Nos. 253 & N253 shall be to operate all scheduled mileage and adhere **fully** to the published timetable. The Operator must use its best endeavours to achieve this.

The **minimum** standards of acceptable performance for Route No. 253 shall be:

Average Excess Wait Time:	No more than 1.30 minutes
Minimum Operated Mileage:	No less than 98.00%

The **minimum** standards of acceptable performance for Route No. N253 shall be:

Departing on Time	No less than 85.00%
Minimum Operated Mileage	No less than 99.00%

or as notified by the Corporation from time to time. The Operator will be required to achieve or better the standards.

### QSI Thresholds

The QSI threshold is the standard of performance to be achieved by the operator in order to qualify for an automatic contract extension (in accordance with Schedule IX of the Framework Agreement).

Average Excess Wait Time Threshold = 1.15 minutes

It is unlikely that the minimum number of QSI surveys for Threshold measurement will be conducted on Route No. N253 at present. However, this may change at a later date when a Threshold figure may be published.

### Summary of proposed QSI coverage: Route Nos. 253 & N253

Note: While London Buses undertakes to carry out QSI surveys at the times and locations specified below, it may prove impossible to rearrange a survey cancelled or nullified at short notice.

### Survey locations

#### Towards Euston Bus Station

Hackney Central  
Stamford Hill \$  
Finsbury Park

#### Towards Cambridge Heath, St.

#### Josephs Hospice

Euston  
Finsbury Park  
Stamford Hill \$

Total scheduled manual QSI surveys per quarter = 96.

\$ Observed simultaneously in both directions. Counted as two surveys.

## 8. RUNNING TIMES

Extracts from the public timetable with sample running times for Route Nos. 253 & N253 are attached at Appendix B. This gives an indication of the time required to travel the route. Attention is drawn to the variations in running times at different times of the day. Please refer to Section 2.8 of Part A of the Guide for Tenderers for further information.

Tenderers should devise their own running times for the section of Route No. 253 between Cambridge Heath, St. Josephs Hospice and Hackney Central Station.

Tenderers should carefully check the existing running times during **all periods** to ensure that they are appropriate in present traffic conditions. For Route No. N253, Tenderers should particularly check the existing running times for the weekend nights.

When reviewing existing, and devising new, running times Tenderers should refer to:

- the minimum performance standards for Route Nos. 253 & N253 in Section 7 above;
- the historical performance data provided in Section 1 Part B of the introduction to this ITT;
- the paragraph in Section 12 referring to the proposed extension of the Cashless Boarding zone throughout the whole of the London area.

In order to meet reliability targets, Tenderers may wish to consider the inclusion of a boarding time allowance at a Central London point for Route No. N253 as appropriate on all or some nights.

Tenderers may consider if school summer holiday schedules, incorporating running time reductions, are desirable for this route. In this event, schedules and costs must be submitted separately.

## 9. LAYOVERS

Under normal circumstances, layover time on stands and at bus stations should be restricted to that required to provide a reliable service. Longer layovers for any other purpose may only be taken with the permission of the Corporation.

## **10. TIMING CONSTRAINTS**

Route No. 253 should interwork with Route No. N253 to form a seamless 24 hour service between Hackney Central Station and Euston Bus Station.

Route No. N253 should interwork with Route No. 254 to form a seamless 24 hour service between Aldgate Bus Station and Holloway.

Route No. 253 should interwork with Route No. 254 between Hackney Central Station and Holloway during all periods, where possible, apart from the Mondays to Fridays PM peak where both routes should be best separated.

Tenderers submitting bids should bear this requirement in mind when compiling schedules. This requirement will be negotiated with the successful Tenderer for this route to ensure that optimal interworking/separation is delivered within its schedules.

## **11. CONTROL STRATEGY**

Route Nos. 253 & N253 can suffer from the effects of traffic congestion, making some form of route control essential in order to achieve or better the minimum performance standards for this route.

Tenderers should submit proposals on the control strategy they intend to adopt and the type of control they would intend to use by completing the form provided in Section 3: Part 7 of this ITT. The cost of this control should be included within the main Tender price.

Tenderers should also indicate how they intend to facilitate driver changeovers and meal reliefs for this route.

Further information is provided in Section 2.11 of Part A of the Guide for Tenderers.

## 12. OPERATIONAL CONSIDERATIONS

Tenderers should note the following operating considerations affecting Route Nos. 253 & N253:

- Route Nos. 253 & N253 can suffer from unpredictable traffic delays in the Hackney, Holloway and Camden areas on Monday to Fridays, particularly during peak periods.
- Route Nos. 253 & N253 can also suffer from major disruption in the Finsbury Park area during Arsenal Football Club home matches.
- **The railway bridges in Stroud Green Road Road, near Finsbury Park Station, have a height restriction of 12' 9" (12 feet 9 inches) or 3.85 metres, which precludes the use of double deck buses under these bridges at any time.**
- There are a number of projects which may affect bus services in the Tottenham Court Road area. These projects include proposals to modify traffic circulation on Tottenham Court Road/Gower Street/Bloomsbury Street, the Tottenham Court Road Station re-development and closure of Andrew Borde Street and Crossrail. Tenderers should note that Tottenham Court Road is no longer available as a curtailment or turning point. Tenderers should be aware of this and the possible effect it may have on traffic. In addition, a re-routing may be required during the life of the contract. Crossrail is planned to open in 2017 and will operate through London (west-east) from Maidenhead and Heathrow via Paddington, Liverpool Street and Stratford to Shenfield, and via Whitechapel to Isle of Dogs (Canary Wharf) and Abbey Wood.

Tenderers should also note the following factors/events which may have an impact on Route Nos. 253 & N253 in the foreseeable future:

- Proposals exist for large scale office development in the Bishopsgate area.
- Woodberry Down Estate is due to be re-developed expanding the population by up to 10,000 by 2021.
- The ongoing Thames Water main replacement works programme in central London will continue to affect this and other bus routes.
- It is anticipated that Cashless Boarding will be extended throughout London at some stage during the lifetime of this contract. **This is expected to lead to significant savings in running and recovery times to bus routes, and, therefore, potential resource (cycle time and PVR) savings are expected. Tenderers are required to identify and submit the level of savings per vehicle that could be achieved by reducing peak vehicle requirement, and/or how reliability targets could be revised when the Scheme is introduced.**

The above factors have been included to assist Tenderers and represents the information currently available to the Corporation. Tenderers should make their own enquiries about events which may impact upon the route and should form their own views about their likely effect upon it.

## 13. STOPPING ARRANGEMENTS

Buses operating on Route Nos. 253 & N253 must serve all stops on the line of route designated for the route.

## 14. TIMING POINTS & MILEAGES

### Timing Points

The required timing points (and codes) are shown in Caesar.

### Mileages for Route No. 253

Cambridge Heath, St. Josephs Hospice to Euston Bus Station	8.3 miles
Euston Bus Station to Cambridge Heath, St. Josephs Hospice	8.1 miles

### Mileages for Route No. N253

Aldgate Bus Station to Tottenham Court Road Station, Tottenham Court Road	11.9 miles
Tottenham Court Road Station, Tottenham Court Road to Aldgate Station	11.3 miles

Tenderers should note that:

- these measurements are believed to be accurate to within 0.5 miles, but no warranty or representation as to accuracy is given;
- out of service stand workings have not been measured and are not included within the above measurements;
- if alternative or additional measurements are used by the Tenderer, these must be stated in the tender submission;
- point to point measurements pertaining to recognised curtailment points or alternative terminals will be agreed with the successful Tenderer once the contract has been awarded.

## 15. VEHICLE LIVERY

All vehicles to be used on Route Nos. 253 & N253 from the commencement of the new Route Agreement must be in a livery that is exclusively Corporation red. The paint should be matched accurately to the colour as defined by the following manufacturer's specifications:

ICI London Bus Red P498 FPF 3

Other manufacturers should also be able to produce this specification from the ICI colour chart.

This requirement does not include the lower panels which may be in a different colour but which shall not exceed 50cm in height, or the rooftop which should be painted white so as to reduce temperatures inside the vehicle during the summer months.

The positioning and size of Operators' logos are to be agreed between the Operator and the Corporation and, where possible, these should be above the front doors on the nearside of the vehicles and above the drivers' offside cab windows.

All livery proposals must be submitted to the Contracts Tendering Manager for approval.



## APPENDIX A: ROUTE RECORD

### ROUTE No. 253: CAMBRIDGE HEATH, ST. JOSEPHS HOSPICE - EUSTON BUS STATION

#### **STREETS TRAVERSED**

**Towards Euston Bus Station:** Mare Street, Amhurst Road, Dalston Lane, Lower Clapton Road, Upper Clapton Road, Clapton Common, Amhurst Park, Seven Sisters Road, Isledon Road, Tollington Road, Camden Road, Bayham Street, Crowndale Road, Eversholt Street, Euston Bus Station.

**Towards Cambridge Heath, St. Josephs Hospice:** Euston Bus Station, Eversholt Street, Camden High Street, Camden Road, Parkhurst Road, Seven Sisters Road, Amhurst Park, Clapton Common, Upper Clapton Road, Lower Clapton Road, Mare Street.

**Note - The railway bridges in Stroud Green Road Road, near Finsbury Park Station, have a height restriction of 12' 9" (12 feet 9 inches) or 3.85 metres, which precludes the use of double deck buses under these bridges at any time.**

#### **STANDS, TURNING POINTS AND DESTINATION BLINDS**

Tenderers should note that under normal circumstances, the specific restrictions relating to each stand will apply to the whole stand at all times. Any variation to such standing arrangements must be agreed by the Corporation. In addition, Tenderers should note the following general requirements:

- 1) Drivers MUST switch off engines during layover periods at bus stations or on stands.
- 2) No meal reliefs may be taken on any stand (on or off line of route) without the permission of the Corporation.
- 3) No crew ferry vehicles may enter any stand (on or off line of route) without the permission of the Corporation.
- 4) Destination blind displays to be used are shown under each stand description. Tenderers may suggest, within their bids, alternative blind displays.
- 5) The intermediate (also known as via) blind display to be used on the nearside of the vehicle is shown in the box below:

253 via Stamford Hill
-----------------------

For further information, please refer to Annex C of the Framework Agreement: General Conditions relating to the use of London Buses' Bus Stations and Stands.

### **CAMBRIDGE HEATH, ASH GROVE BUS GARAGE**

Private stand on forecourt of Ash Grove Garage.

Buses proceed from Mare Street via Ash Grove to Ash Grove Garage to stand, departing via Ash Grove Garage and Ash Grove to Mare Street. Set down in Mare Street, at stop LH and pick up in Mare Street, at stop LP.

AVAILABILITY:	At any time.
OPERATING RESTRICTIONS:	No more than <b>2</b> vehicles on Route No. 253 should be scheduled to stand at any one time.
MEAL RELIEFS:	No meal relief vehicles to stand at any time.
FERRY VEHICLES:	No ferry vehicles to park on stand at any time.
OTHER INFORMATION:	Toilet facilities available in the garage.
BLIND DISPLAY:	Ash Grove

### **CLAPTON, KENNINGHALL ROAD ROUNDABOUT (from Euston Bus Station)**

Private stand in centre of Kenninghall Road roundabout at junction of Lower Clapton Road and Lea Bridge Road.

Buses proceed from Upper Clapton Road via Kenninghall Road roundabout and Access Road to stand, departing via Access Road and Kenninghall Road roundabout to Upper Clapton Road. Set down in Upper Clapton Road, at stop B and pick up in Upper Clapton Road, at stop O.

AVAILABILITY:	At any time.
OPERATING RESTRICTIONS:	To be used for unscheduled curtailments only
MEAL RELIEFS:	No meal relief vehicles to stand at any time.
FERRY VEHICLES:	No ferry vehicles to park on stand at any time.
BLIND DISPLAY:	Clapton Pond

### **CLAPTON, KENNINGHALL ROAD ROUNDABOUT (from Euston Bus Station)**

Buses proceed from Upper Clapton Road via Kenninghall Road roundabout departing to Upper Clapton Road. Set down in Upper Clapton Road, at stop B and pick up in Upper Clapton Road, at stop O.

AVAILABILITY:	At any time.
OPERATING RESTRICTIONS:	<b>Turning Point Only - Buses must not stand.</b>
BLIND DISPLAY:	Clapton Pond

### **STAMFORD HILL, ROOKWOOD ROAD, EAST SIDE**

Public stand for 3 buses in two sections (16.5 and 24.5 metres) on east side of Rookwood Road outside Stamford Hill Bus Garage commencing level with lamp standard No. 3 and extending overall 77.5 metres north.

#### **From Cambridge Heath, St. Josephs Hospice**

Buses proceed from Clapton Common via Stamford Hill, Egerton Road and Rookwood Road to stand, departing via Rookwood Road to Clapton Common. Set down in Clapton Common, at stop CV and pick up in Clapton Common, at stop CT.

#### **From Euston Bus Station**

Buses proceed from Amhurst Park via Stamford Hill, Egerton Road and Rookwood Road to stand, departing via Rookwood Road to Clapton Common. Set down in Amhurst Park, at stop CR and pick up in Clapton Common, at stop CV.

AVAILABILITY:	At any time.
OPERATING RESTRICTIONS:	To be used for unscheduled curtailments only.
MEAL RELIEFS:	No meal relief vehicles to stand at any time.
FERRY VEHICLES:	No ferry vehicles to park on stand at any time.
BLIND DISPLAY:	Stamford Hill

### **MANOR HOUSE STATION, SEVEN SISTERS ROAD, SOUTH SIDE (from Cambridge Heath, St. Josephs Hospice)**

Public stand for up to 3 buses on south side of Seven Sisters Road outside St. Olave's Parish Church Hall commencing 17 metres east of lamp standard No. 059 and extending 30 metres east.

Buses proceed from Seven Sisters Road direct to stand, departing via Seven Sisters Road and u-turn through central reservation to Seven Sisters Road. Set down in Seven Sisters Road, at alighting point and pick up in Seven Sisters Road, at stop G.

AVAILABILITY:	At any time.
OPERATING RESTRICTIONS:	To be used for unscheduled curtailments only.
MEAL RELIEFS:	No meal relief vehicles to stand at any time.
FERRY VEHICLES:	No ferry vehicles to park on stand at any time.
BLIND DISPLAY:	Manor House

### **FINSBURY PARK STATION, STATION PLACE, CENTRE STAND**

Private stand for 3 buses in marked bay in centre of Station Place commencing opposite and 5 metres north of passenger entrance to National Rail Station and extending 33.4 metres south.

#### **From Cambridge Heath, St. Josephs Hospice**

Buses proceed from Seven Sisters Road via Blackstock Road, Rock Street, St. Thomas's Road and Station Place to stand, departing via Station Place and Stroud Green Road to Seven Sisters Road. Set down in Seven Sisters Road, at stop M and pick up in Seven Sisters Road, at stop L.

#### **From Euston Bus Station**

Buses proceed from Seven Sisters Road via Station Place to stand, departing via Station Place, Stroud Green Road, Seven Sisters Road, Blackstock Road, Rock Street and St. Thomas's Road to Seven Sisters Road. Set down in Seven Sisters Road, at stop R and pick up in Seven Sisters Road, at stop S.

AVAILABILITY:	At any time.
OPERATING RESTRICTIONS:	To be used for unscheduled curtailments only.
MEAL RELIEFS:	No meal relief vehicles to stand at any time.
FERRY VEHICLES:	No ferry vehicles to park on stand at any time.
OTHER INFORMATION:	<b>WARNING: A low bridge is situated in Stroud Green Road to left of the exit from Station Place. Drivers must not turn left from Station Place. The height restriction of these railway bridges are 12'9" (12 feet 9 inches) which precludes use of double deck buses under these bridges.</b>
BLIND DISPLAY:	Finsbury Park Station

### **FINSBURY PARK, COLERIDGE ROAD (from Cambridge Heath, St. Josephs Hospice)**

Public offside stand for 3 buses on east side of Coleridge Road commencing 6.5 metres north of lamp standard No. 516 and extending 39.5 metres south.

Buses proceed from Isledon Road via Coleridge Road to stand, departing via Coleridge Road to Seven Sisters Road. Set down in Isledon Road, at stop W and pick up in Seven Sisters Road, at stop X.

AVAILABILITY:	At any time.
OPERATING RESTRICTIONS:	To be used for unscheduled curtailments only.
MEAL RELIEFS:	No meal relief vehicles to stand at any time.
FERRY VEHICLES:	No ferry vehicles to park on stand at any time.
BLIND DISPLAY:	Finsbury Park Station

**HOLLOWAY, CAMDEN ROAD (from Cambridge Heath, St. Josephs Hospice)**

Public stand for 3 buses on south side of Camden Road commencing opposite and approximately 50 metres east of Williamson Street and extending 35 metres east. Buses proceed from Camden Road direct to stand, departing via Camden Road to Parkhurst Road. Set down in Camden Road, at stop X and pick up in Parkhurst Road.

AVAILABILITY:	At any time.
OPERATING RESTRICTIONS:	To be used for unscheduled curtailments only.
MEAL RELIEFS:	No meal relief vehicles to stand at any time.
FERRY VEHICLES:	No ferry vehicles to park on stand at any time.
BLIND DISPLAY:	Holloway, Nags Head

**CAMDEN ROAD, BRECKNOCK ROAD**

From Cambridge Heath, St. Josephs Hospice

Buses proceed from Camden Road via York Way and Camden Park Road departing to Camden Road. Set down and pick up in Camden Road.

From Euston Bus Station

Buses proceed from Camden Road via York Way and Camden Park Road departing to Camden Road. Set down and pick up in Camden Road.

AVAILABILITY:	At any time.
OPERATING RESTRICTIONS:	<b>Turning Point Only - Buses must not stand.</b>
BLIND DISPLAY:	Camden Road, Brecknock Road

**CAMDEN TOWN, BAYHAM STREET (from Cambridge Heath, St. Josephs Hospice)**

Public stand on east side of Bayham Street, commencing opposite the party wall of "The Laurel Tree" and extending 26 metres south.

Overflow stand - Public stand on east side of Bayham Street, commencing 54 metres south of Greenland Road and extending 15 metres south.

Buses proceed from Bayham Street direct to stand, departing via Bayham Street and Pratt Street to Camden High Street. Set down in Bayham Street, at stop T and pick up in Camden High Street, at stop Y.

AVAILABILITY:	At any time.
OPERATING RESTRICTIONS:	To be used for unscheduled curtailments only.
MEAL RELIEFS:	No meal relief vehicles to stand at any time.
FERRY VEHICLES:	No ferry vehicles to park on stand at any time.
BLIND DISPLAY:	Camden Town.

**MORNINGTON CRESCENT STATION (from Cambridge Heath, St. Josephs Hospice)**

Public offside stand on east side of Hampstead Road, commencing 49 metres north of Harrington Square and extending 50 metres south.

Buses proceed from Crowndale Road via Hampstead Road, Harrington Square and Hampstead Road to stand, departing via Hampstead Road to Camden High Street. Set down in Hampstead Road, at stop D and pick up in Camden High Street, at stop J.

AVAILABILITY:	At any time.
OPERATING RESTRICTIONS:	To be used for unscheduled curtailments only.
MEAL RELIEFS:	No meal relief vehicles to stand at any time.
FERRY VEHICLES:	No ferry vehicles to park on stand at any time.
BLIND DISPLAY:	Mornington Crescent

**EUSTON STATION**

Private stand in Euston Bus Station.

Buses proceed from Euston Bus Station direct to stand, departing to Euston Bus Station. Set down in Euston Bus Station, at alighting point and pick up in Euston Bus Station, at stop G.

AVAILABILITY:	At any time.
OPERATING RESTRICTIONS:	No more than <b>2</b> vehicles on Route No. 253 should be scheduled to stand at any one time.
MEAL RELIEFS:	No meal relief vehicles to stand at any time.
FERRY VEHICLES:	No ferry vehicles to park on stand at any time.
OTHER INFORMATION:	Toilet facilities available 24 hours a day.
BLIND DISPLAY:	Euston

## APPENDIX A: ROUTE RECORD

### ROUTE No. N253: ALDGATE BUS STATION - TOTTENHAM COURT ROAD STATION, TOTTENHAM COURT ROAD

#### **STREETS TRAVERSED**

**Towards Tottenham Court Road Station, Tottenham Court Road:** Aldgate Bus Station, Aldgate High Street, Houndsditch, St. Botolph Street, Middlesex Street, Whitechapel High Street, Whitechapel Road, Cambridge Heath Road, Mare Street, Amhurst Road, Dalston Lane, Lower Clapton Road, Kenninghall Road Roundabout, Lower Clapton Road, Upper Clapton Road, Clapton Common, Amhurst Park, Seven Sisters Road, Isledon Road, Tollington Road, Camden Road, Bayham Street, Crowndale Road, Eversholt Street, Euston Bus Station, Euston Road, Gower Street, Bedford Square, Bloomsbury Street, Shaftesbury Avenue, High Holborn, St. Giles High Street.

**Towards Aldgate Bus Station:** Tottenham Court Road, Euston Road, Euston Bus Station, Eversholt Street, Camden High Street, Camden Road, Parkhurst Road, Seven Sisters Road, Amhurst Park, Clapton Common, Upper Clapton Road, Lower Clapton Road, Mare Street, Cambridge Heath Road, Whitechapel Road, Whitechapel High Street, Aldgate High Street, Minories.

**Note - The railway bridges in Stroud Green Road Road, near Finsbury Park Station, have a height restriction of 12' 9" (12 feet 9 inches) or 3.85 metres, which precludes the use of double deck buses under these bridges at any time.**

#### **STANDS, TURNING POINTS AND DESTINATION BLINDS**

Tenderers should note that under normal circumstances, the specific restrictions relating to each stand will apply to the whole stand at all times. Any variation to such standing arrangements must be agreed by the Corporation. In addition, Tenderers should note the following general requirements:

- 1) Drivers MUST switch off engines during layover periods at bus stations or on stands.
- 2) No meal reliefs may be taken on any stand (on or off line of route) without the permission of the Corporation.
- 3) No crew ferry vehicles may enter any stand (on or off line of route) without the permission of the Corporation.
- 4) Destination blind displays to be used are shown under each stand description. Tenderers may suggest, within their bids, alternative blind displays.
- 5) The intermediate (also known as via) blind display to be used on the nearside of the vehicle is shown in the box below:

N253 via Stamford Hill
------------------------

For further information, please refer to Annex C of the Framework Agreement: General Conditions relating to the use of London Buses' Bus Stations and Stands.

### **ALDGATE BUS STATION**

Private stand for 16 buses in marked bays in Aldgate Bus Station on south side of Aldgate High Street.

Buses proceed from Minories via Aldgate Bus Station to stand, departing to Aldgate Bus Station. Set down in Minories, at stop H and pick up in Aldgate Bus Station, at stop L.

AVAILABILITY:	At any time.
OPERATING RESTRICTIONS:	No more than <b>2</b> vehicles on Route No. N253 should be scheduled to stand at any one time.
MEAL RELIEFS:	No meal relief vehicles to stand at any time.
FERRY VEHICLES:	No ferry vehicles to park on stand at any time.
OTHER INFORMATION:	London Buses toilet facilities available 24 hours a day.
BLIND DISPLAY:	Aldgate

### **WHITECHAPEL, DURWARD STREET (from Tottenham Court Road Station, Tottenham Court Road)**

Public stand for 3 buses on south side of Durward Street commencing opposite and 24 metres east of junction with Castlemain Street and extending 39 metres east.

Buses proceed from Whitechapel Road via Vallance Road and Durward Street to stand, departing via Durward Street and Fulbourne Street to Whitechapel Road. Set down in Whitechapel Road, at stop A and pick up in Whitechapel Road, at stop B.

AVAILABILITY:	At any time.
OPERATING RESTRICTIONS:	To be used for unscheduled curtailments only.
MEAL RELIEFS:	No meal relief vehicles to stand at any time.
FERRY VEHICLES:	No ferry vehicles to park on stand at any time.
BLIND DISPLAY:	Whitechapel

### **ASH GROVE, BUSH ROAD**

Public stand on north side of Bush Road.

#### **From Aldgate Bus Station**

Buses proceed from Mare Street via The Triangle, Westgate Street, Sheep Lane and Bush Road to stand, departing via Bush Road to Mare Street. Set down in Mare Street, at stop LP and pick up in Mare Street, at stop Q.

#### **From Tottenham Court Road Station, Tottenham Court Road**

Buses proceed from Mare Street via The Triangle, Westgate Street, Sheep Lane and Bush Road to stand, departing via Bush Road to Mare Street. Set down in Mare Street, at stop LE and pick up in Mare Street, at stop LP.

AVAILABILITY:	At any time.
OPERATING RESTRICTIONS:	To be used for unscheduled curtailments only.
MEAL RELIEFS:	No meal relief vehicles to stand at any time.
FERRY VEHICLES:	No ferry vehicles to park on stand at any time.
BLIND DISPLAY:	Ash Grove



**CLAPTON, KENNINGHALL ROAD ROUNDABOUT (from Tottenham Court Road Station, Tottenham Court Road)**

Buses proceed from Upper Clapton Road via Kenninghall Road roundabout departing to Upper Clapton Road. Set down in Upper Clapton Road, at stop B and pick up in Upper Clapton Road, at stop O.

AVAILABILITY: At any time.  
OPERATING RESTRICTIONS: **Turning Point Only - Buses must not stand.**  
BLIND DISPLAY: Clapton Pond

**STAMFORD HILL, ROOKWOOD ROAD, EAST SIDE**

Public stand for 3 buses in two sections (16.5 and 24.5 metres) on east side of Rookwood Road outside Stamford Hill Bus Garage commencing level with lamp standard No. 3 and extending overall 77.5 metres north.

**From Aldgate Bus Station**

Buses proceed from Clapton Common via Stamford Hill, Egerton Road and Rookwood Road to stand, departing via Rookwood Road to Clapton Common. Set down in Clapton Common, at stop CV and pick up in Clapton Common, at stop CT.

**From Tottenham Court Road Station, Tottenham Court Road**

Buses proceed from Amhurst Park via Stamford Hill, Egerton Road and Rookwood Road to stand, departing via Rookwood Road to Clapton Common. Set down in Amhurst Park, at stop CR and pick up in Clapton Common, at stop CV.

AVAILABILITY: At any time.  
OPERATING RESTRICTIONS: To be used for unscheduled curtailments only.  
MEAL RELIEFS: No meal relief vehicles to stand at any time.  
FERRY VEHICLES: No ferry vehicles to park on stand at any time.  
BLIND DISPLAY: Stamford Hill

**MANOR HOUSE STATION, SEVEN SISTERS ROAD, SOUTH SIDE (from Aldgate Bus Station)**

Public stand for up to 3 buses on south side of Seven Sisters Road outside St. Olave's Parish Church Hall commencing 17 metres east of lamp standard No. 059 and extending 30 metres east.

Buses proceed from Seven Sisters Road direct to stand, departing via Seven Sisters Road and u-turn through central reservation to Seven Sisters Road. Set down in Seven Sisters Road, at alighting point and pick up in Seven Sisters Road, at stop G.

AVAILABILITY: At any time.  
OPERATING RESTRICTIONS: To be used for unscheduled curtailments only.  
MEAL RELIEFS: No meal relief vehicles to stand at any time.  
FERRY VEHICLES: No ferry vehicles to park on stand at any time.  
BLIND DISPLAY: Manor House

### **FINSBURY PARK, COLERIDGE ROAD (from Aldgate Bus Station)**

Public offside stand for 3 buses on east side of Coleridge Road commencing 6.5 metres north of lamp standard No. 516 and extending 39.5 metres south.

Buses proceed from Isledon Road via Coleridge Road to stand, departing via Coleridge Road to Seven Sisters Road. Set down in Isledon Road, at stop W and pick up in Seven Sisters Road, at stop X.

AVAILABILITY:	At any time.
OPERATING RESTRICTIONS:	To be used for unscheduled curtailments only.
MEAL RELIEFS:	No meal relief vehicles to stand at any time.
FERRY VEHICLES:	No ferry vehicles to park on stand at any time.
BLIND DISPLAY:	Finsbury Park Station

### **HOLLOWAY, CAMDEN ROAD**

Public stand for 3 buses on south side of Camden Road commencing opposite and approximately 50 metres east of Williamson Street and extending 35 metres east.

#### From Aldgate Bus Station

Buses proceed from Camden Road direct to stand, departing via Camden Road to Parkhurst Road. Set down in Camden Road, at stop X and pick up in Parkhurst Road.

#### From Tottenham Court Road Station, Tottenham Court Road

Buses proceed from Parkhurst Road via Seven Sisters Road, Holloway Road and Camden Road to stand, departing to Camden Road. Set down in Parkhurst Road, at stop C and pick up in Camden Road.

AVAILABILITY:	At any time.
OPERATING RESTRICTIONS:	To be used for unscheduled curtailments only.
MEAL RELIEFS:	No meal relief vehicles to stand at any time.
FERRY VEHICLES:	No ferry vehicles to park on stand at any time.
BLIND DISPLAY:	Holloway, Nags Head

### **CAMDEN ROAD, BRECKNOCK ROAD**

#### From Aldgate Bus Station

Buses proceed from Camden Road via Camden Park Road and York Way departing to Camden Road. Set down and pick up in Camden Road.

#### From Tottenham Court Road Station, Tottenham Court Road

Buses proceed from Camden Road via Camden Park Road and York Way departing to Camden Road. Set down and pick up in Camden Road.

AVAILABILITY:	At any time.
OPERATING RESTRICTIONS:	<b>Turning Point Only - Buses must not stand.</b>
BLIND DISPLAY:	Camden Road, Brecknock Road

**CAMDEN TOWN, BAYHAM STREET (from Aldgate Bus Station)**

Public stand on east side of Bayham Street, commencing opposite the party wall of "The Laurel Tree"/AFCO 95-111 and extending 26 metres south.

Overflow stand - Public stand on east side of Bayham Street, commencing 54 metres south of Greenland Road and extending 15 metres south.

Buses proceed from Camden Road via Bayham Street to stand, departing via Bayham Street and Pratt Street to Camden High Street. Set down in Camden Road, at stop S and pick up in Camden High Street, at stop Y.

AVAILABILITY:	At any time.
OPERATING RESTRICTIONS:	To be used for unscheduled curtailments only.
MEAL RELIEFS:	No meal relief vehicles to stand at any time.
FERRY VEHICLES:	No ferry vehicles to park on stand at any time.
BLIND DISPLAY:	Camden Town

**MORNINGTON CRESCENT STATION (from Aldgate Bus Station)**

Public offside stand on east side of Hampstead Road, commencing 49 metres north of Harrington Square and extending 50 metres south.

Buses proceed from Crowndale Road via Hampstead Road, Harrington Square and Hampstead Road to stand, departing via Hampstead Road to Camden High Street. Set down in Hampstead Road, at stop D and pick up in Camden High Street, at stop J.

AVAILABILITY:	At any time.
OPERATING RESTRICTIONS:	To be used for unscheduled curtailments only.
MEAL RELIEFS:	No meal relief vehicles to stand at any time.
FERRY VEHICLES:	No ferry vehicles to park on stand at any time.
BLIND DISPLAY:	Mornington Crescent

**EUSTON STATION (from Aldgate Bus Station)**

Private stand in Euston Bus Station.

Buses proceed from Euston Bus Station direct to stand, departing to Euston Bus Station. Set down in Euston Bus Station, at alighting point and pick up in Euston Bus Station, at stop G.

AVAILABILITY:	At any time.
OPERATING RESTRICTIONS:	To be used for unscheduled curtailments only.
MEAL RELIEFS:	No meal relief vehicles to stand at any time.
FERRY VEHICLES:	No ferry vehicles to park on stand at any time.
BLIND DISPLAY:	Euston

**WARREN STREET STATION, MAPLE STREET (from Aldgate Bus Station)**

Public stand on north side of Maple Street, commencing 5 metres west of the western kerbline of Whitfield Street and extending 31 metres west.

Buses proceed from Euston Road via Gower Street, Grafton Way, Fitzroy Street and Maple Street to stand, departing via Maple Street to Tottenham Court Road. Set down in Euston Road, at stop P and pick up in Tottenham Court Road, at stop X.

AVAILABILITY:	At any time.
OPERATING RESTRICTIONS:	To be used for unscheduled curtailments only.
MEAL RELIEFS:	No meal relief vehicles to stand at any time.
FERRY VEHICLES:	No ferry vehicles to park on stand at any time.
BLIND DISPLAY:	Warren Street

**TOTTENHAM COURT ROAD STATION, ST. GILES HIGH STREET**

Public stand on east side of St. Giles High Street, commencing at a point 15 metres south of the junction with New Oxford Street under Centrepont Building and extending 48 metres.

Buses proceed from St. Giles High Street direct to stand, departing via St. Giles High Street and New Oxford Street to Tottenham Court Road. Set down in St. Giles High Street and pick up in Tottenham Court Road, at stop C.

AVAILABILITY:	At any time.
OPERATING RESTRICTIONS:	No more than <b>2</b> vehicles on Route No. N253 should be scheduled to stand at any one time.
MEAL RELIEFS:	No meal relief vehicles to stand at any time.
FERRY VEHICLES:	No ferry vehicles to park on stand at any time.
OTHER INFORMATION:	Council toilet facilities available 24 hours a day.
BLIND DISPLAY:	Tottenham Court Road

**APPENDIX B: SAMPLE RUNNING TIMES FOR ROUTE No. 253**  
(based on current schedule)

**MONDAYS TO FRIDAYS**1. Hackney Central Station, Amhurst Road to Euston Bus Station

	Typical early morning	Longest morning peak	Typical interpeak	Longest afternoon peak	Typical early evening	Typical late evening
<b>Hackney Central Station</b>						
<i>Amhurst Road</i>	0514	0756	1159	1704	2001	2305
<i>Clapton Kenninghall Road/Thistlewaite Road</i>	0520	0804	1207	1713	2007	2311
<i>Stamford Hill Clapton Common</i>	0526	0812	1215	1722	2014	2317
Manor House Station	0532	0819	1222	1730	2020	2323
Finsbury Park Station	0535	0824	1227	1735	2024	2326
<i>Holloway Camden Road</i>	0538	0829	1232	1740	2028	2329
<i>Camden Road Brecknock Road</i>	0540	0834	1237	1745	2031	2332
Camden Town Station	0543	0839	1242	1750	2035	2336
Mornington Crescent Station	0545	0842	1245	1753	2038	2338
<b>Euston Bus Station</b>	0548	0845	1248	1756	2041	2341
	34 minutes	49 minutes	49 minutes	52 minutes	40 minutes	36 minutes

**MONDAYS TO FRIDAYS - continued**2. Euston Bus Station to Hackney Central Station, Mare Street

	Typical early morning	Longest morning peak	Typical interpeak	Longest afternoon peak	Typical early evening	Typical late evening
<b>Euston Bus Station</b>	0515	0800	1158	1700	2000	2300
Mornington Crescent Station	0518	0803	1202	1705	2003	2303
Camden Town Station	0521	0807	1206	1710	2007	2306
Camden Road <i>Brecknock Road</i>	0524	0812	1211	1716	2012	2310
Holloway <i>Nags Head, Parkhurst Road</i>	0527	0816	1216	1721	2016	2313
Finsbury Park Station <i>Seven Sisters Road</i>	0530	0821	1222	1728	2020	2316
Manor House Station	0534	0825	1226	1733	2024	2320
Stamford Hill <i>Clapton Common</i>	0540	0831	1233	1742	2031	2326
Clapton <i>Kenninghall Road/Thistlewaite Road</i>	0546	0838	1241	1751	2037	2332
<b>Hackney Central Station</b>	0551	0846	1249	1801	2043	2337
<i>Mare Street</i>	36 minutes	46 minutes	51 minutes	61 minutes	43 minutes	37 minutes

**SATURDAYS**1. Hackney Central Station, Amhurst Road to Euston Bus Station

	Typical early morning	Typical late AM shopping period	Typical PM shopping period	Typical early evening	Typical late evening
<b>Hackney Central Station Amhurst Road</b>	0514	1103	1505	2001	2305
<i>Clapton Kenninghall Road/Thistlewaite Road</i>	0520	1110	1512	2007	2311
<i>Stamford Hill Clapton Common</i>	0526	1118	1520	2014	2317
Manor House Station	0532	1124	1526	2020	2323
Finsbury Park Station	0535	1129	1531	2024	2326
<i>Holloway Camden Road</i>	0538	1134	1536	2028	2329
<i>Camden Road Brecknock Road</i>	0540	1139	1541	2032	2332
Camden Town Station	0543	1144	1546	2037	2336
Mornington Crescent Station	0545	1147	1549	2040	2338
<b>Euston Bus Station</b>	0548	1150	1552	2043	2341
	34 minutes	47 minutes	47 minutes	42 minutes	36 minutes

2. Euston Bus Station to Hackney Central Station, Mare Street

	Typical early morning	Typical late AM shopping period	Typical PM shopping period	Typical early evening	Typical late evening
<b>Euston Bus Station</b>	0515	1100	1502	2004	2300
Mornington Crescent Station	0518	1105	1507	2009	2303
Camden Town Station	0521	1110	1512	2014	2306
<i>Camden Road Brecknock Road</i>	0524	1115	1517	2019	2310
<i>Holloway Nags Head, Parkhurst Road</i>	0527	1120	1522	2023	2313
<i>Finsbury Park Station Seven Sisters Road</i>	0530	1126	1528	2027	2317
Manor House Station	0534	1130	1532	2031	2321
<i>Stamford Hill Clapton Common</i>	0540	1138	1540	2038	2328
<i>Clapton Kenninghall Road/Thistlewaite Road</i>	0546	1145	1547	2044	2334
<b>Hackney Central Station Mare Street</b>	0551	1151	1553	2050	2340
	36 minutes	51 minutes	51 minutes	46 minutes	40 minutes

**SUNDAYS****1. Hackney Central Station, Amhurst Road to Euston Bus Station**

	Typical early morning	Typical late AM shopping period	Typical PM shopping period	Typical early evening	Typical late evening
<b>Hackney Central Station</b> <i>Amhurst Road</i>	0514	1057	1505	2001	2305
<i>Clapton Kenninghall Road/Thistlewaite Road</i>	0520	1104	1512	2007	2311
<i>Stamford Hill Clapton Common</i>	0526	1111	1519	2014	2317
<i>Manor House Station</i>	0532	1117	1525	2020	2323
<i>Finsbury Park Station</i>	0535	1122	1530	2024	2326
<i>Holloway Camden Road</i>	0538	1127	1535	2028	2329
<i>Camden Road Brecknock Road</i>	0540	1132	1540	2031	2332
<i>Camden Town Station</i>	0543	1138	1546	2035	2336
<i>Mornington Crescent Station</i>	0545	1141	1549	2038	2338
<b>Euston Bus Station</b>	0548	1144	1552	2041	2341
	34 minutes	47 minutes	47 minutes	40 minutes	36 minutes



**SUNDAYS - continued****2. Euston Bus Station to Hackney Central Station, Mare Street**

	Typical early morning	Typical late AM shopping period	Typical PM shopping period	Typical early evening	Typical late evening
<b>Euston Bus Station</b>	0515	1056	1504	2004	2300
Mornington Crescent Station	0518	1101	1509	2007	2303
Camden Town Station	0521	1106	1514	2011	2306
Camden Road <i>Brecknock Road</i>	0524	1112	1520	2016	2310
Holloway <i>Nags Head, Parkhurst Road</i>	0527	1118	1526	2020	2313
Finsbury Park Station <i>Seven Sisters Road</i>	0530	1123	1531	2024	2316
Manor House Station	0534	1127	1535	2028	2320
Stamford Hill <i>Clapton Common</i>	0540	1134	1542	2035	2326
Clapton <i>Kenninghall Road/Thistlewaite Road</i>	0546	1141	1549	2041	2332
<b>Hackney Central Station <i>Mare Street</i></b>	0551	1147	1555	2047	2337
	36 minutes	51 minutes	51 minutes	43 minutes	37 minutes

The above tables have been included to assist Tenderers. They represent the information currently available to the Corporation. Tenderers should form their own views about what is appropriate in terms of running times. (See Section 8.)

**APPENDIX B: SAMPLE RUNNING TIMES FOR ROUTE No. N253**  
(based on current schedule)

**SUNDAY NIGHTS/MONDAY MORNINGS TO THURSDAY NIGHTS/FRIDAY MORNINGS**

1. Aldgate Bus Station to Tottenham Court Road Station, Tottenham Court Road

	Typical late night	Typical early morning
<b>Aldgate Bus Station</b>	0005	0350
Whitechapel Station <i>London Hospital</i>	0011	0356
Bethnal Green Station	0014	0359
Cambridge Heath Station	0016	0401
Hackney Central Station <i>Amhurst Road</i>	0021	0406
Clapton <i>Kenninghall Road/Thistlewaite Road</i>	0027	0412
Stamford Hill <i>Clapton Common</i>	0033	0418
Manor House Station	0039	0424
Finsbury Park Station <i>Seven Sisters Road</i>	0042	0427
Holloway <i>Camden Road</i>	0045	0430
Camden Road <i>Brecknock Road</i>	0047	0432
Camden Town Station	0050	0435
Mornington Crescent Station	0052	0437
Euston Bus Station	0055	0440
<b>Tottenham Court Road Station</b> <i>Tottenham Court Road</i>	0101	0446
	56 minutes	56 minutes

**SUNDAY NIGHTS/MONDAY MORNINGS TO THURSDAY NIGHTS/FRIDAY MORNINGS - continued****2. Tottenham Court Road Station, Tottenham Court Road to Aldgate Station**

	Typical late night	Typical early morning
<b>Tottenham Court Road Station</b> <i>Tottenham Court Road</i>	0025	0355
Euston Bus Station	0030	0400
Mornington Crescent Station	0033	0403
Camden Town Station	0036	0406
Camden Road <i>Brecknock Road</i>	0039	0409
Holloway <i>Nags Head, Parkhurst Road</i>	0042	0412
Finsbury Park Station <i>Seven Sisters Road</i>	0045	0415
Manor House Station	0049	0419
Stamford Hill <i>Clapton Common</i>	0055	0425
Clapton <i>Kenninghall Road/Thistlewaite Road</i>	0101	0431
Hackney Central Station <i>Mare Street</i>	0106	0436
Cambridge Heath Station	0111	0441
Bethnal Green Station	0113	0443
Whitechapel Station <i>London Hospital</i>	0116	0446
<b>Aldgate Station</b>	0120	0450
	55 minutes	55 minutes

**FRIDAY NIGHTS/SATURDAY MORNINGS TO SATURDAY NIGHT/SUNDAY MORNING****1. Aldgate Bus Station to Tottenham Court Road Station, Tottenham Court Road**

	Typical late night	Typical early morning
<b>Aldgate Bus Station</b>	0005	0350
Whitechapel Station <i>London Hospital</i>	0011	0356
Bethnal Green Station	0014	0359
Cambridge Heath Station	0016	0401
Hackney Central Station <i>Amhurst Road</i>	0021	0406
Clapton <i>Kenninghall Road/Thistlewaite Road</i>	0027	0412
Stamford Hill <i>Clapton Common</i>	0033	0418
Manor House Station	0039	0424
Finsbury Park Station <i>Seven Sisters Road</i>	0042	0427
Holloway <i>Camden Road</i>	0045	0430
Camden Road <i>Brecknock Road</i>	0048	0433
Camden Town Station	0052	0437
Mornington Crescent Station	0054	0439
Euston Bus Station	0057	0442
<b>Tottenham Court Road Station <i>Tottenham Court Road</i></b>	0103	0448
	58	58
	minutes	minutes

**FRIDAY NIGHTS/SATURDAY MORNINGS TO SATURDAY NIGHT/SUNDAY MORNING - continued**2. Tottenham Court Road Station, Tottenham Court Road to Aldgate Station

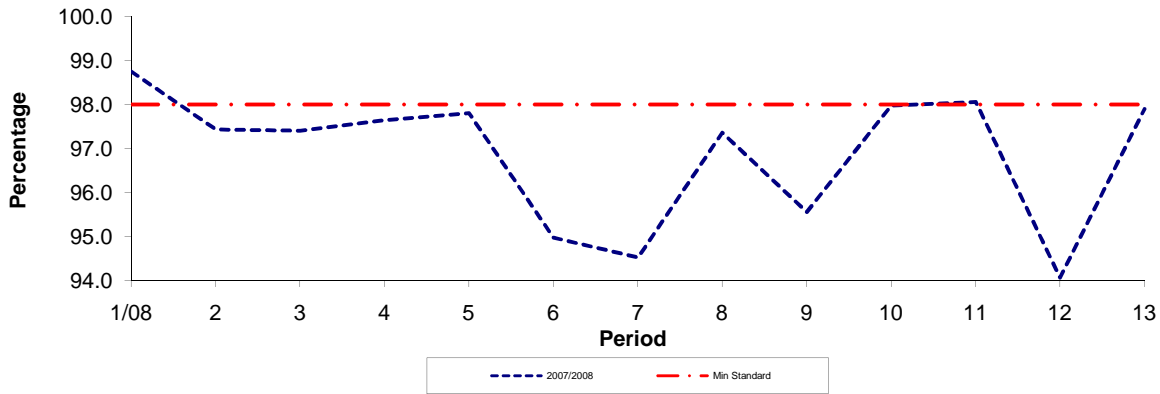
	Typical late night	Typical early morning
<b>Tottenham Court Road Station</b> <i>Tottenham Court Road</i>	0024	0356
Euston Bus Station	0029	0401
Mornington Crescent Station	0032	0404
Camden Town Station	0035	0407
Camden Road <i>Brecknock Road</i>	0039	0411
Holloway <i>Nags Head, Parkhurst Road</i>	0042	0414
Finsbury Park Station <i>Seven Sisters Road</i>	0046	0418
Manor House Station	0050	0422
Stamford Hill <i>Clapton Common</i>	0057	0429
Clapton <i>Kenninghall Road/Thistlewaite Road</i>	0103	0435
Hackney Central Station <i>Mare Street</i>	0109	0441
Cambridge Heath Station	0115	0447
Bethnal Green Station	0117	0449
Whitechapel Station <i>London Hospital</i>	0120	0452
<b>Aldgate Station</b>	0124	0456
	60 minutes	60 minutes

The above tables have been included to assist Tenderers. They represent the information currently available to the Corporation. Tenderers should form their own views about what is appropriate in terms of running times. (See Section 8.)

## PART B - PERFORMANCE STATISTICS

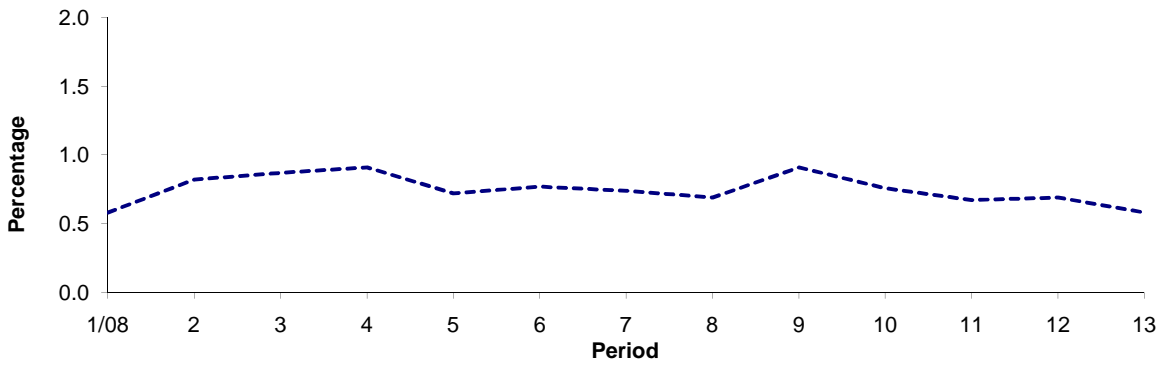
### Route 253

**Mileage Operated**



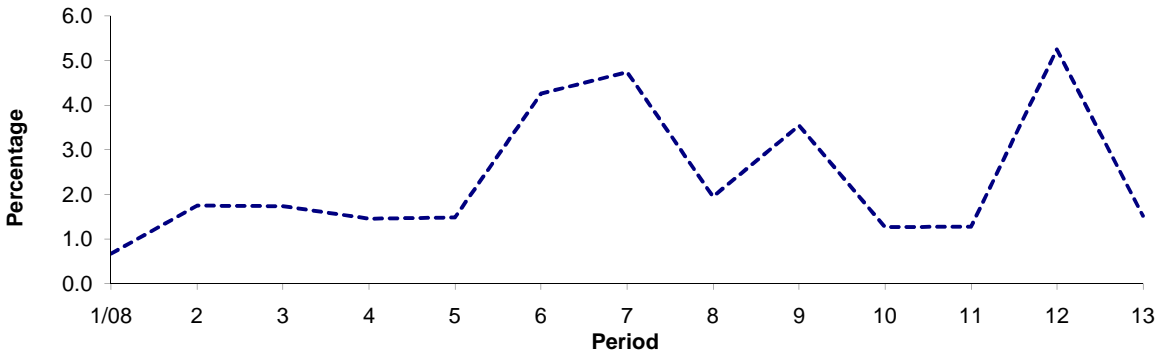
Period	1/08	2	3	4	5	6	7	8	9	10	11	12	13
2007/2008	98.75	97.43	97.40	97.64	97.80	94.97	94.52	97.36	95.55	97.98	98.06	94.06	97.90
Min Standard	98.00	98.00	98.00	98.00	98.00	98.00	98.00	98.00	98.00	98.00	98.00	98.00	98.00

**Deductible Mileage**



Period	1/08	2	3	4	5	6	7	8	9	10	11	12	13
2007/2008	0.58	0.82	0.87	0.91	0.72	0.77	0.74	0.69	0.91	0.76	0.67	0.69	0.58

**Non Deductible Mileage**



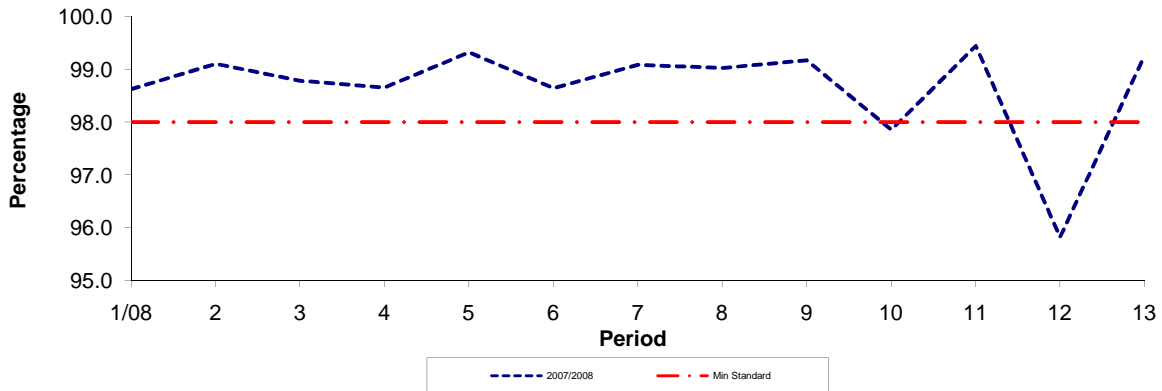
Period	1/08	2	3	4	5	6	7	8	9	10	11	12	13
2007/2008	0.67	1.75	1.73	1.45	1.48	4.26	4.74	1.95	3.54	1.26	1.27	5.25	1.52

**Note :** Mileage is based on 4 weeks data

## PART B - PERFORMANCE STATISTICS

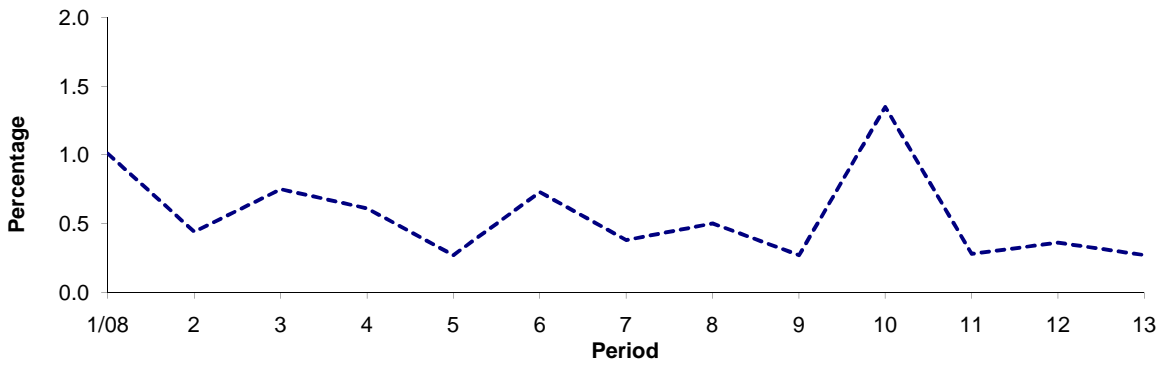
### Route N253

**Mileage Operated**



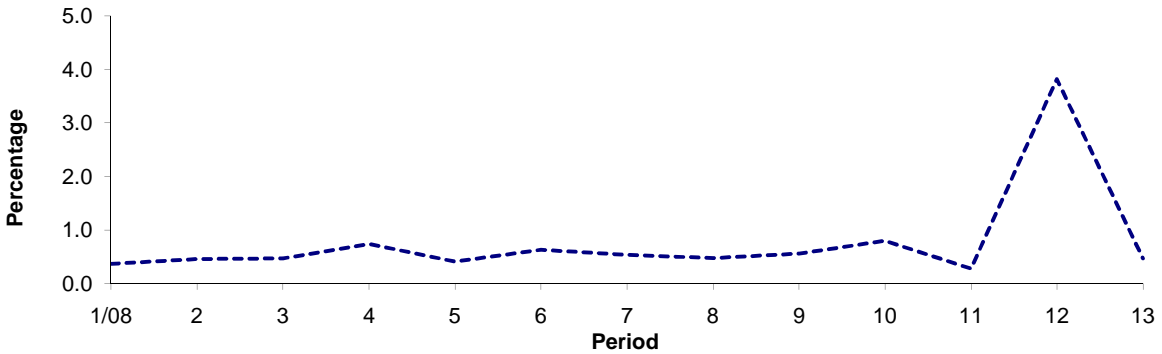
Period	1/08	2	3	4	5	6	7	8	9	10	11	12	13
2007/2008	98.62	99.10	98.78	98.65	99.32	98.64	99.08	99.02	99.17	97.85	99.44	95.82	99.26
Min Standard	98.00	98.00	98.00	98.00	98.00	98.00	98.00	98.00	98.00	98.00	98.00	98.00	98.00

**Deductible Mileage**



Period	1/08	2	3	4	5	6	7	8	9	10	11	12	13
2007/2008	1.01	0.44	0.75	0.61	0.27	0.73	0.38	0.50	0.27	1.35	0.28	0.36	0.27

**Non Deductible Mileage**

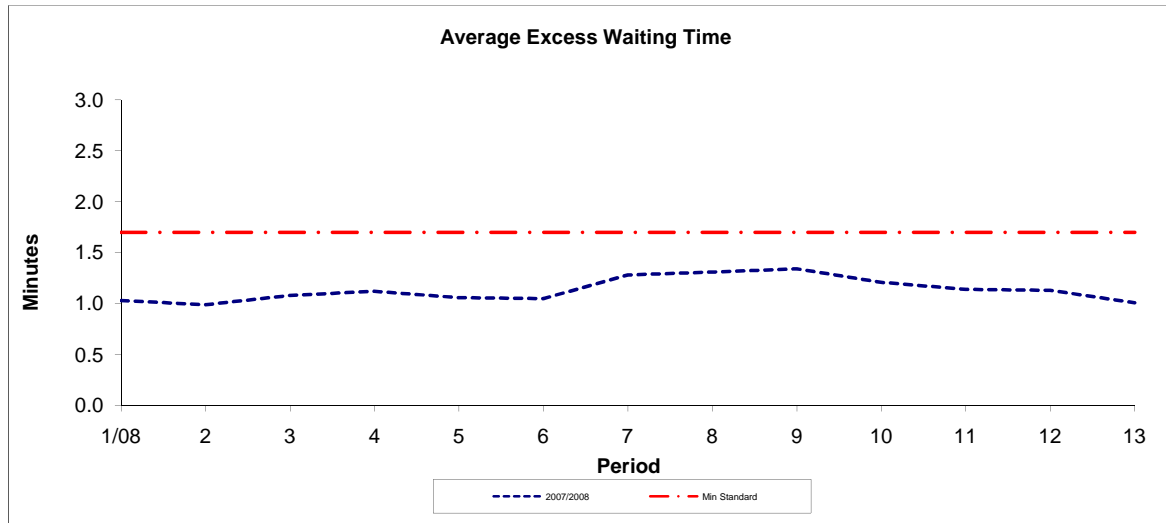


Period	1/08	2	3	4	5	6	7	8	9	10	11	12	13
2007/2008	0.37	0.46	0.47	0.74	0.41	0.63	0.54	0.48	0.56	0.80	0.28	3.82	0.47

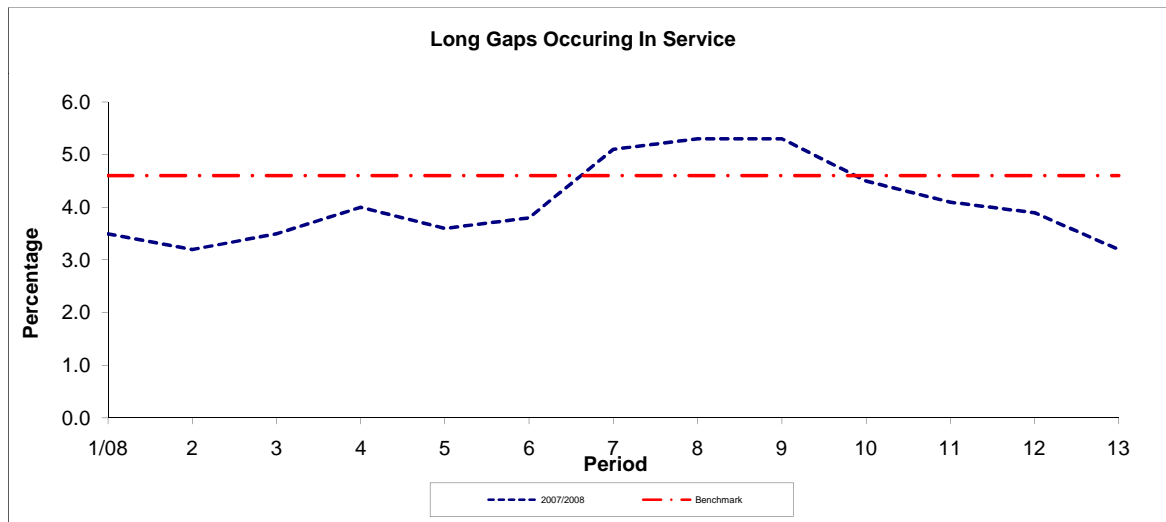
**Note :** Mileage is based on 4 weeks data

## PART B - PERFORMANCE STATISTICS

### Route 253



Period	1/08	2	3	4	5	6	7	8	9	10	11	12	13
2007/2008	1.03	0.99	1.08	1.12	1.06	1.05	1.28	1.31	1.34	1.21	1.14	1.13	1.01
Min Standard	1.70	1.70	1.70	1.70	1.70	1.70	1.70	1.70	1.70	1.70	1.70	1.70	1.70



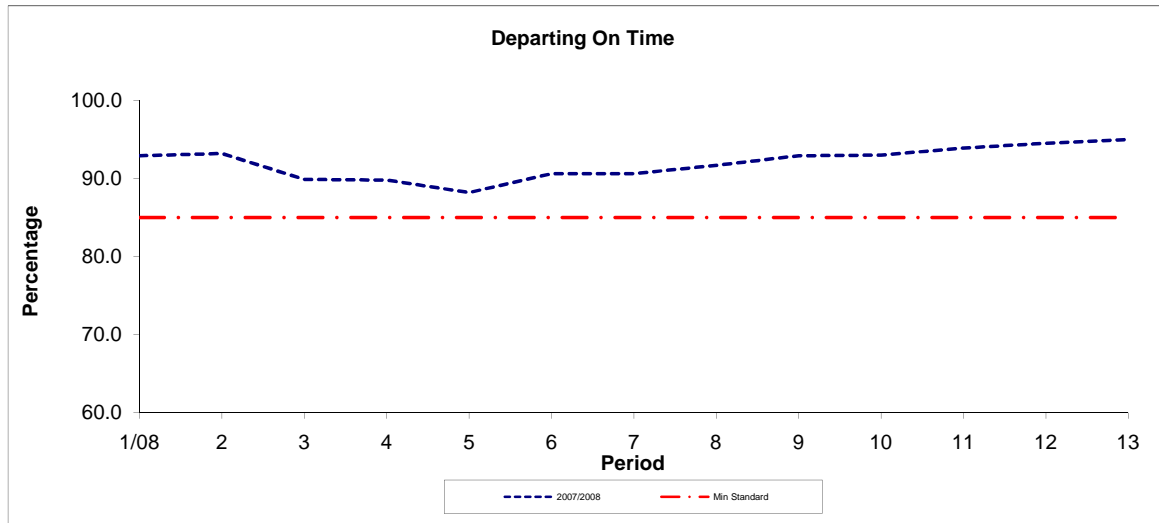
Period	1/08	2	3	4	5	6	7	8	9	10	11	12	13
2007/2008	3.50	3.20	3.50	4.00	3.60	3.80	5.10	5.30	5.30	4.50	4.10	3.90	3.20
Benchmark	4.60	4.60	4.60	4.60	4.60	4.60	4.60	4.60	4.60	4.60	4.60	4.60	4.60

**Note :** Reliability is based on 12 weeks rolling data

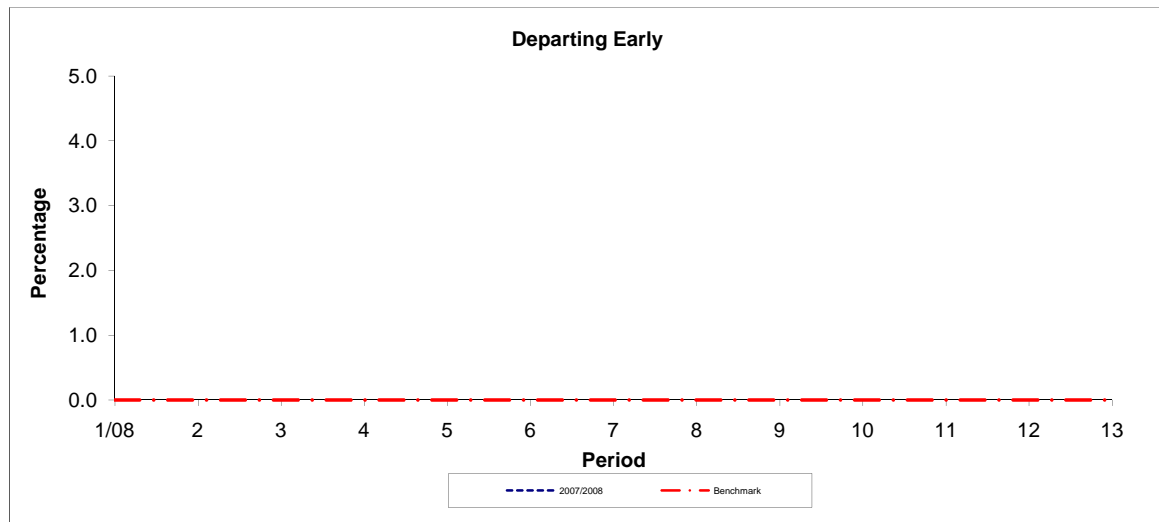


## PART B - PERFORMANCE STATISTICS

### Route N253



Period	1/08	2	3	4	5	6	7	8	9	10	11	12	13
2007/2008	92.90	93.20	89.90	89.80	88.20	90.60	90.60	91.70	92.90	93.00	93.90	94.50	95.00
Min Standard	85.00	85.00	85.00	85.00	85.00	85.00	85.00	85.00	85.00	85.00	85.00	85.00	85.00



Period	1/08	2	3	4	5	6	7	8	9	10	11	12	13
2007/2008													
Benchmark	0.00	0.00	0.00	0.00	0.00	0.00	0.00	0.00	0.00	0.00	0.00	0.00	0.00

**Note :** Reliability is based on 12 weeks rolling data