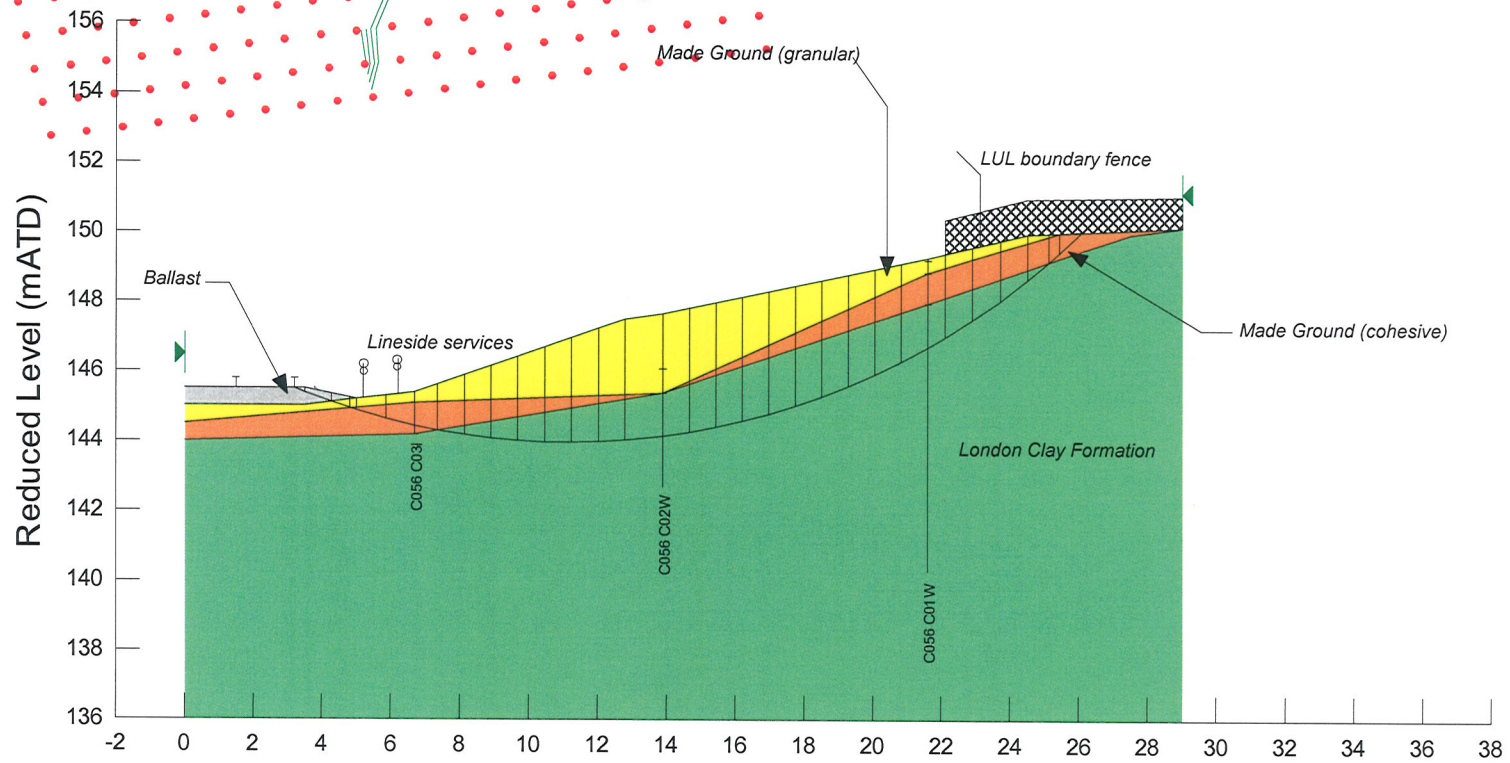


Asset C056 CTS1
Section A-A (Case A)
Chainage C056/COR/0590
Analysis Method: Morgenstern-Price



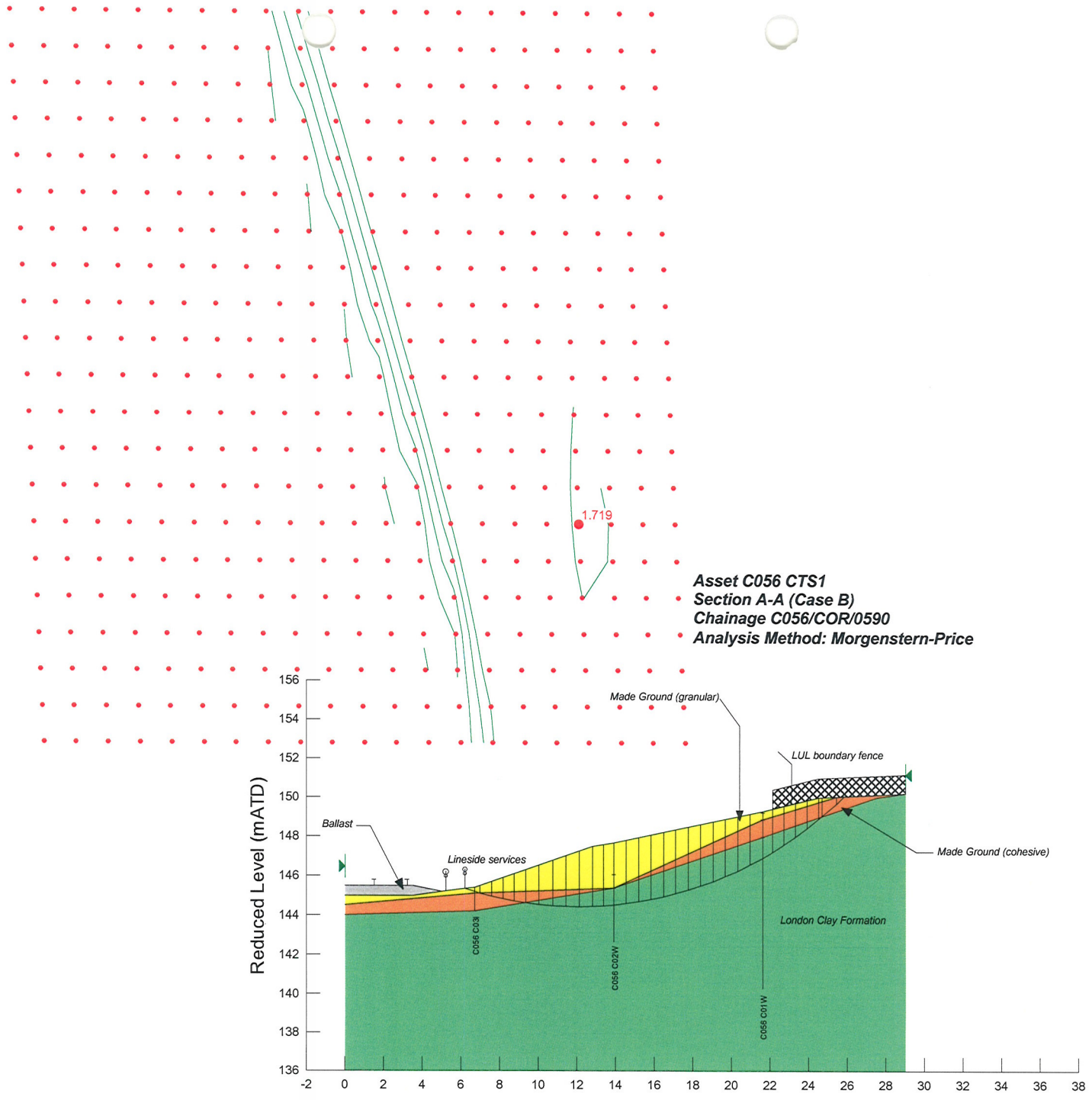
Ballast
 Unit Weight: 18
 Cohesion: 0
 Phi: 40
 Ru: 0

Made Ground (Granular)
 Unit Weight: 18
 Cohesion: 0
 Phi: 28
 Ru: 0

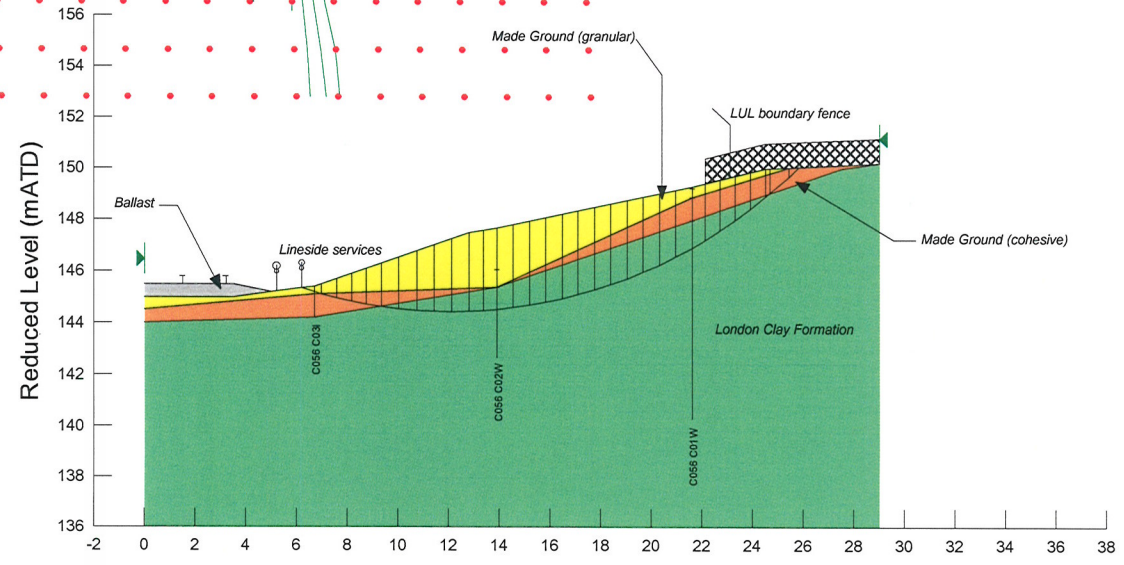
Made Ground (Cohesive)
 Unit Weight: 18
 Cohesion: 0
 Phi: 28
 Ru: 0

London Clay Formation
 Unit Weight: 19
 Cohesion: 4
 Phi: 21
 Ru (included in PWP): 0.25

RUN 1

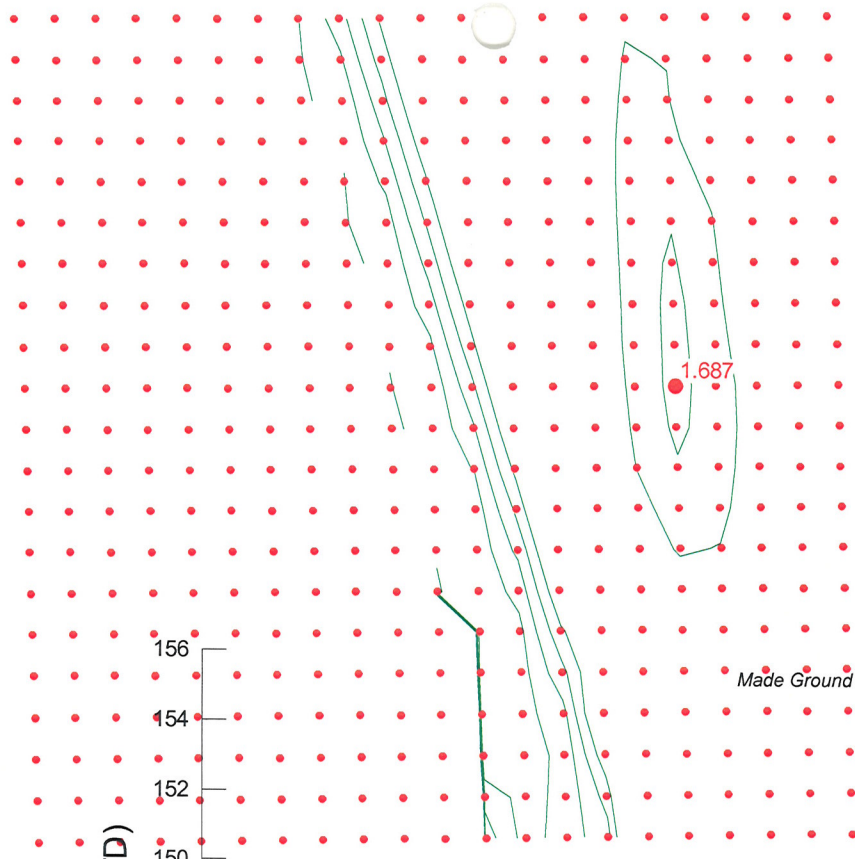


Asset C056 CTS1
 Section A-A (Case B)
 Chainage C056/COR/0590
 Analysis Method: Morgenstern-Price

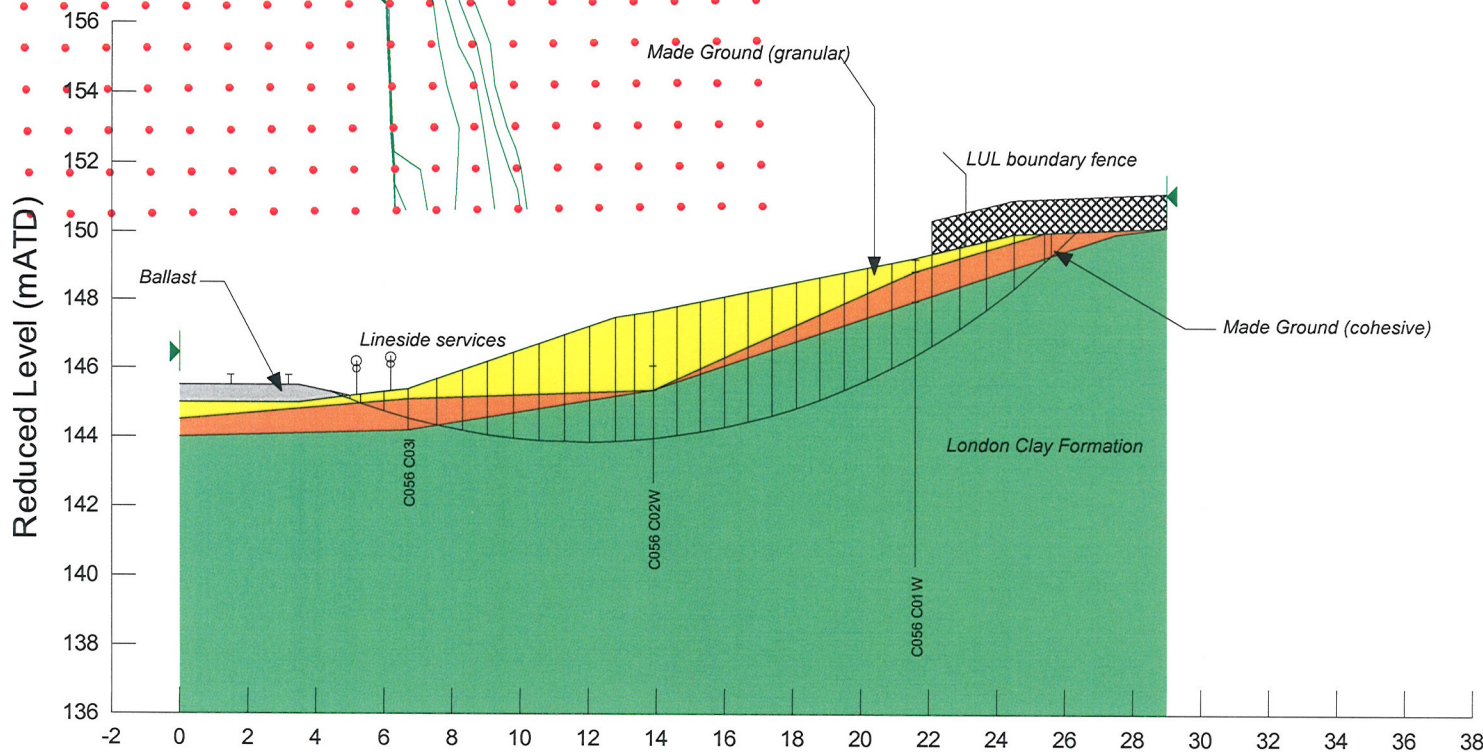


Ballast	Made Ground (Granular)	Made Ground (Cohesive)	London Clay Formation
Unit Weight: 18	Unit Weight: 18	Unit Weight: 18	Unit Weight: 19
Cohesion: 0	Cohesion: 0	Cohesion: 0	Cohesion: 4
Phi: 40	Phi: 28	Phi: 28	Phi: 21
Ru: 0	Ru: 0	Ru: 0	Ru (included in PWP): 0.25

RUN 2



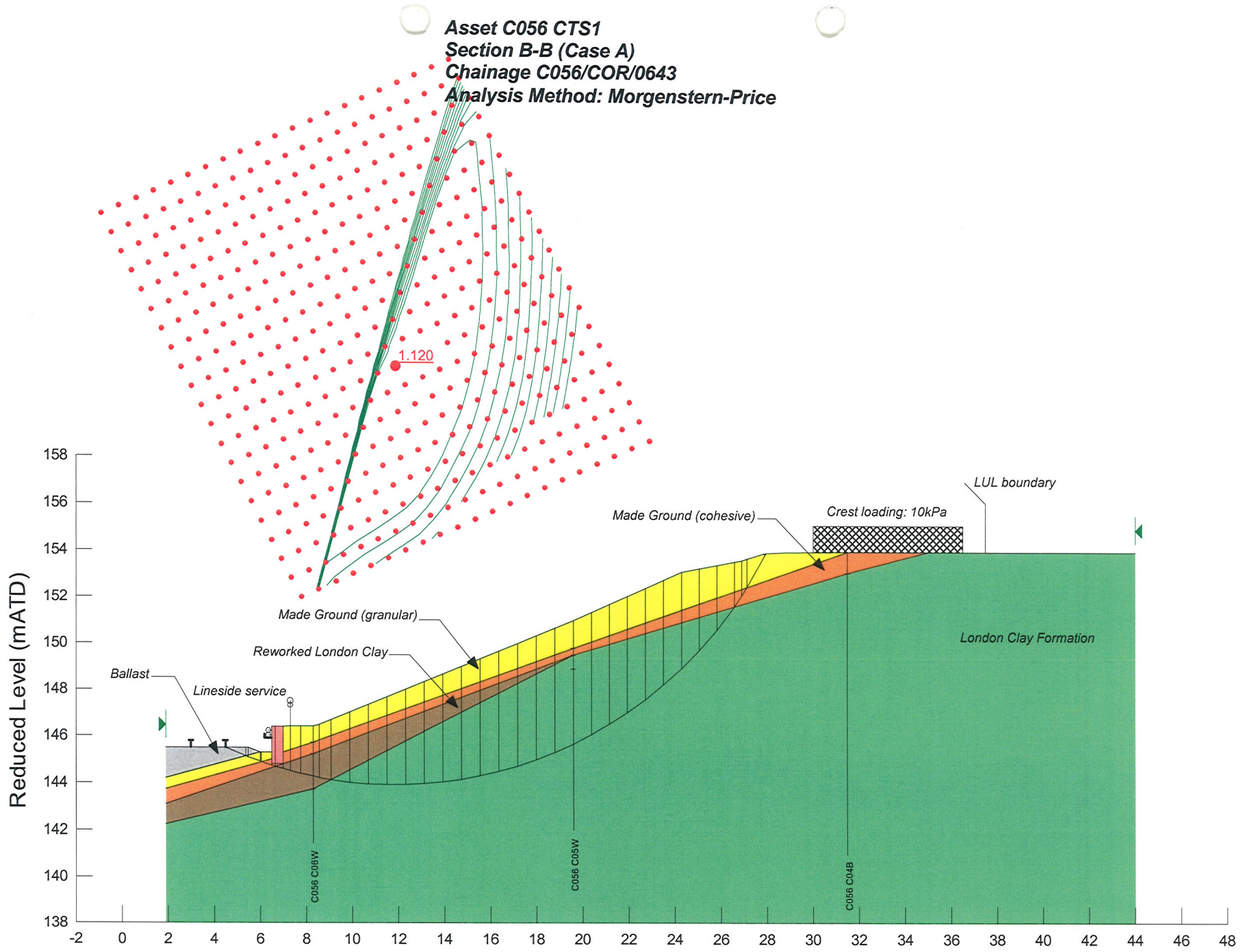
Asset C056 CTS1
Section A-A (Case C)
Chainage C056/COR/0590
Analysis Method: Morgenstern-Price



Ballast	Made Ground (Granular)	Made Ground (Cohesive)	London Clay Formation
Unit Weight: 18	Unit Weight: 18	Unit Weight: 18	Unit Weight: 19
Cohesion: 0	Cohesion: 0	Cohesion: 0	Cohesion: 4
Phi: 40	Phi: 28	Phi: 28	Phi: 21
Ru: 0	Ru: 0	Ru: 0	Ru (included in PWP): 0.25

Run 3

Asset C056 CTS1
Section B-B (Case A)
Chainage C056/COR/0643
Analysis Method: Morgenstern-Price



Wall
 Unit Weight: 24
 Cohesion: 1000
 Phi: 40
 Ru: 0

Ballast
 Unit Weight: 18
 Cohesion: 0
 Phi: 40
 Ru: 0

Made Ground (granular)
 Unit Weight: 18
 Cohesion: 0
 Phi: 28
 Ru: 0

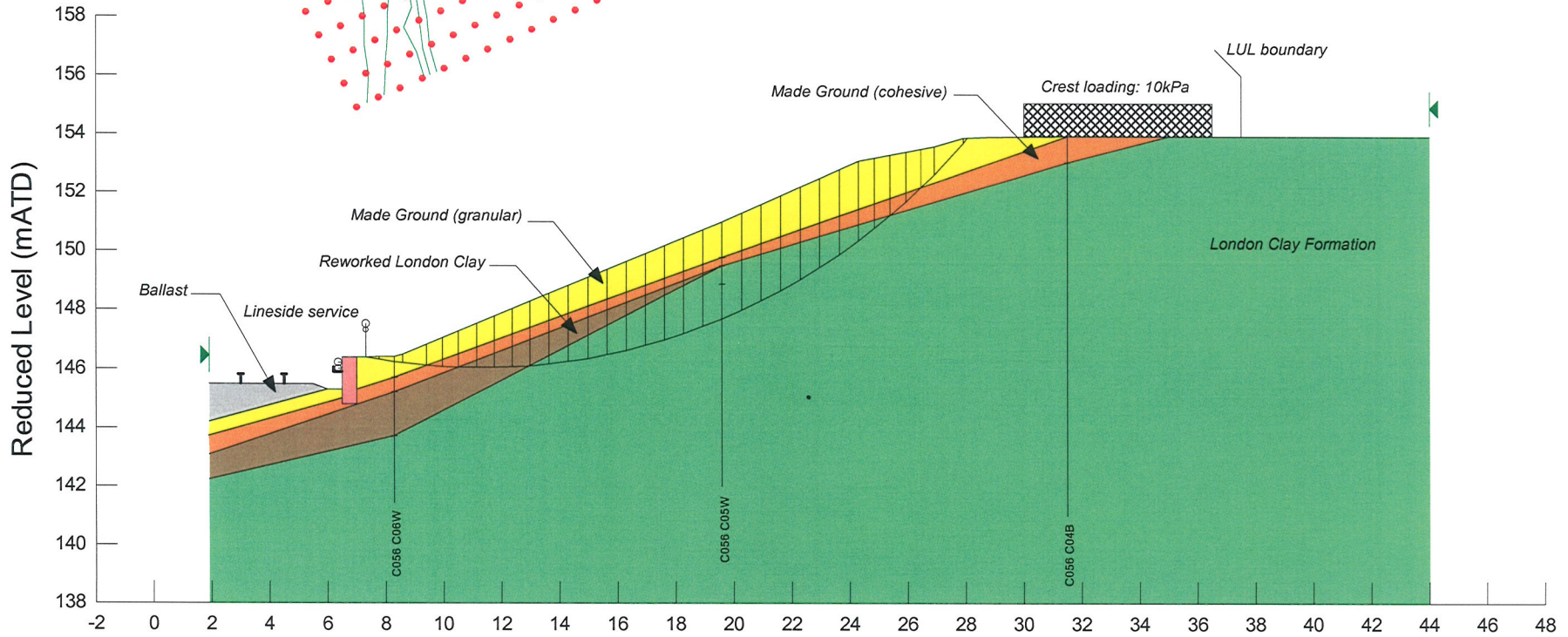
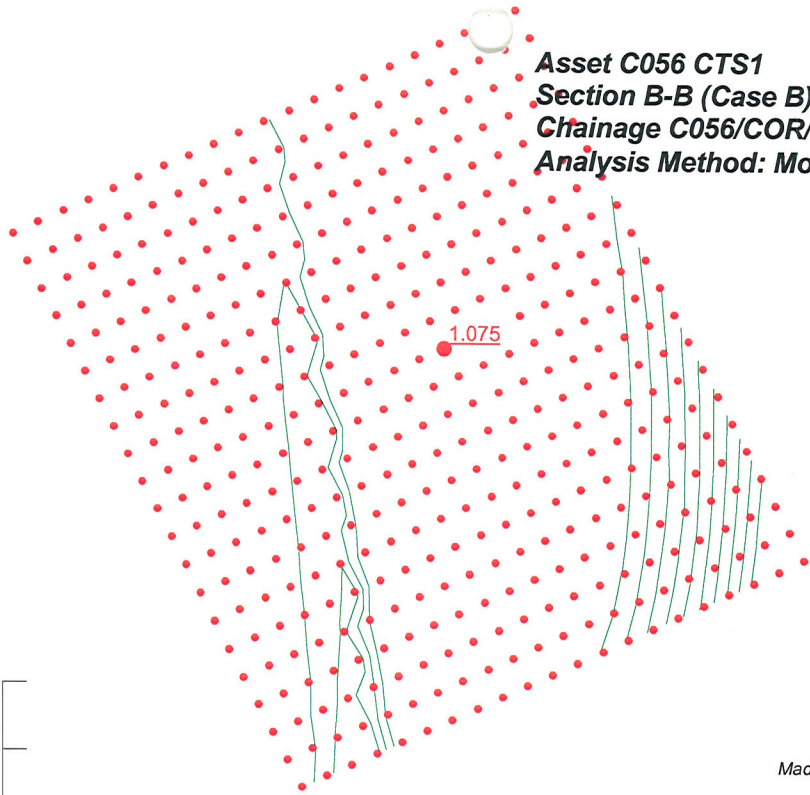
Made Ground (cohesive)
 Unit Weight: 18
 Cohesion: 0
 Phi: 28
 Ru: 0

Reworked London Clay
 Unit Weight: 19
 Cohesion: 2
 Phi: 18
 Ru (included in PWP): 0.25

London Clay Formation
 Unit Weight: 19
 Cohesion: 4
 Phi: 21
 Ru (included in PWP): 0.25

RUN 4

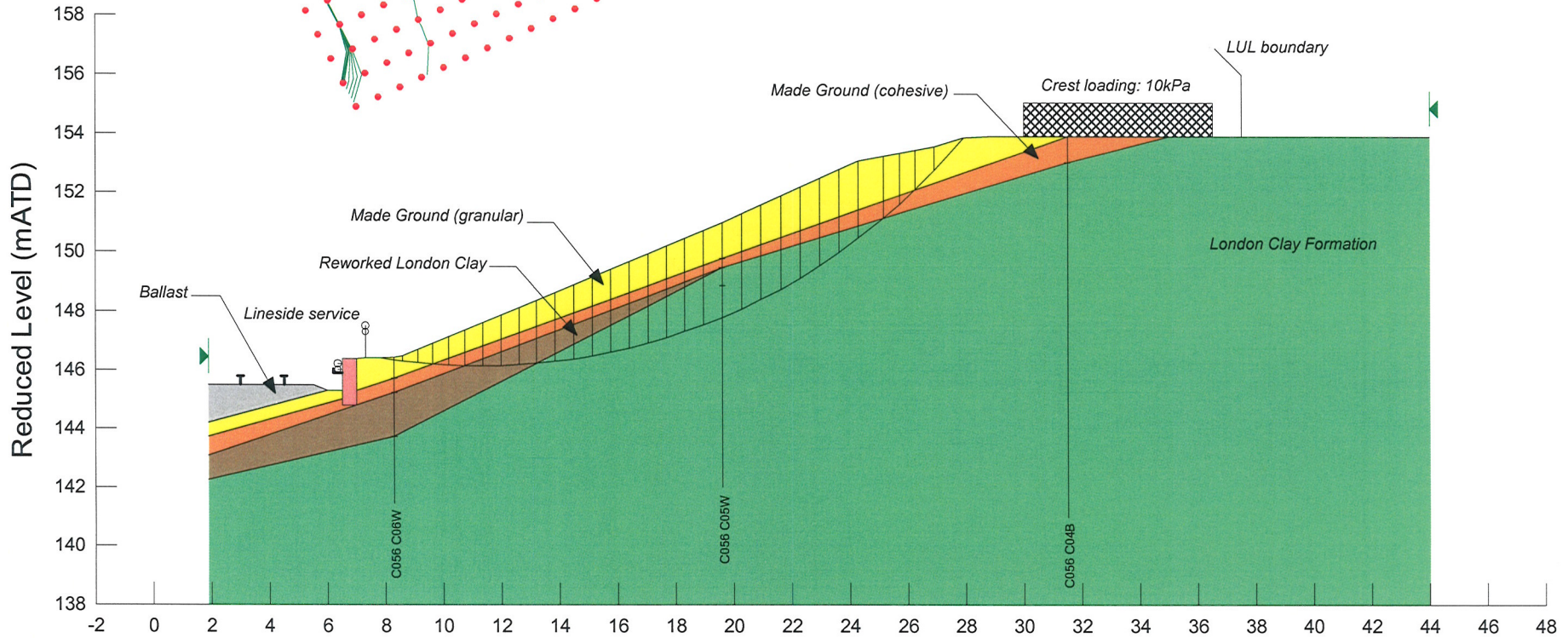
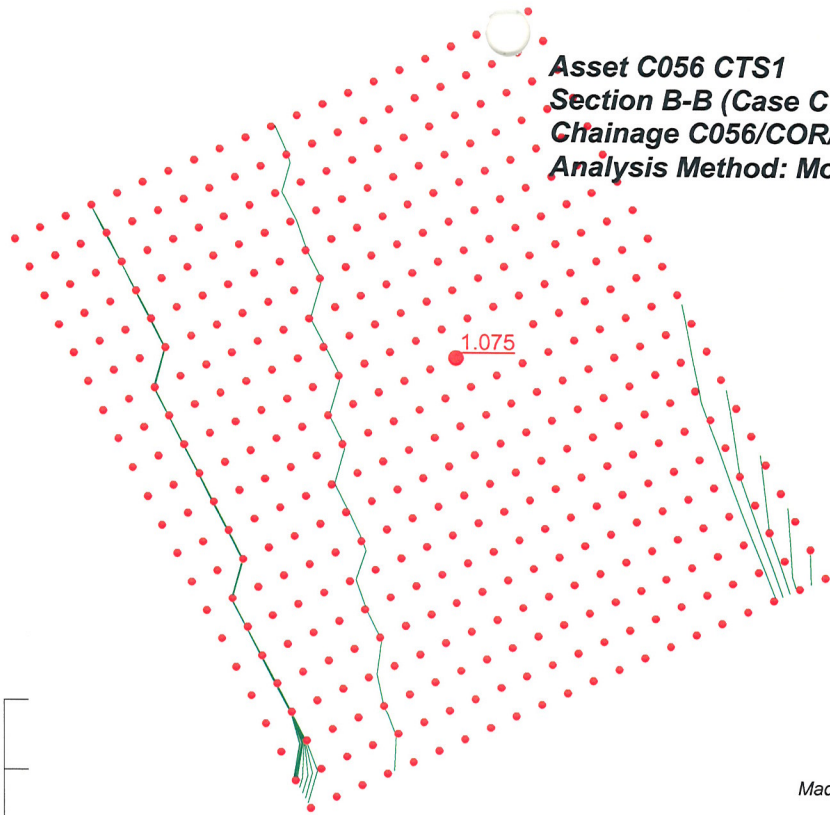
Asset C056 CTS1
Section B-B (Case B)
Chainage C056/COR/0643
Analysis Method: Morgenstern-Price



Wall	Ballast	Made Ground (granular)	Made Ground (cohesive)	Reworked London Clay	London Clay Formation
Unit Weight: 24	Unit Weight: 18	Unit Weight: 18	Unit Weight: 18	Unit Weight: 19	Unit Weight: 19
Cohesion: 1000	Cohesion: 0	Cohesion: 0	Cohesion: 0	Cohesion: 2	Cohesion: 4
Phi: 40	Phi: 40	Phi: 28	Phi: 28	Phi: 18	Phi: 21
Ru: 0	Ru: 0	Ru: 0	Ru: 0	Ru (included in PWP): 0.25	Ru (included in PWP): 0.25

Run 5

Asset C056 CTS1
Section B-B (Case C - slope side of retaining structure)
Chainage C056/COR/0643
Analysis Method: Morgenstern-Price



Wall
 Unit Weight: 24
 Cohesion: 1000
 Phi: 40

Ballast
 Unit Weight: 18
 Cohesion: 0
 Phi: 40

Made Ground (granular)
 Unit Weight: 18
 Cohesion: 0
 Phi: 28

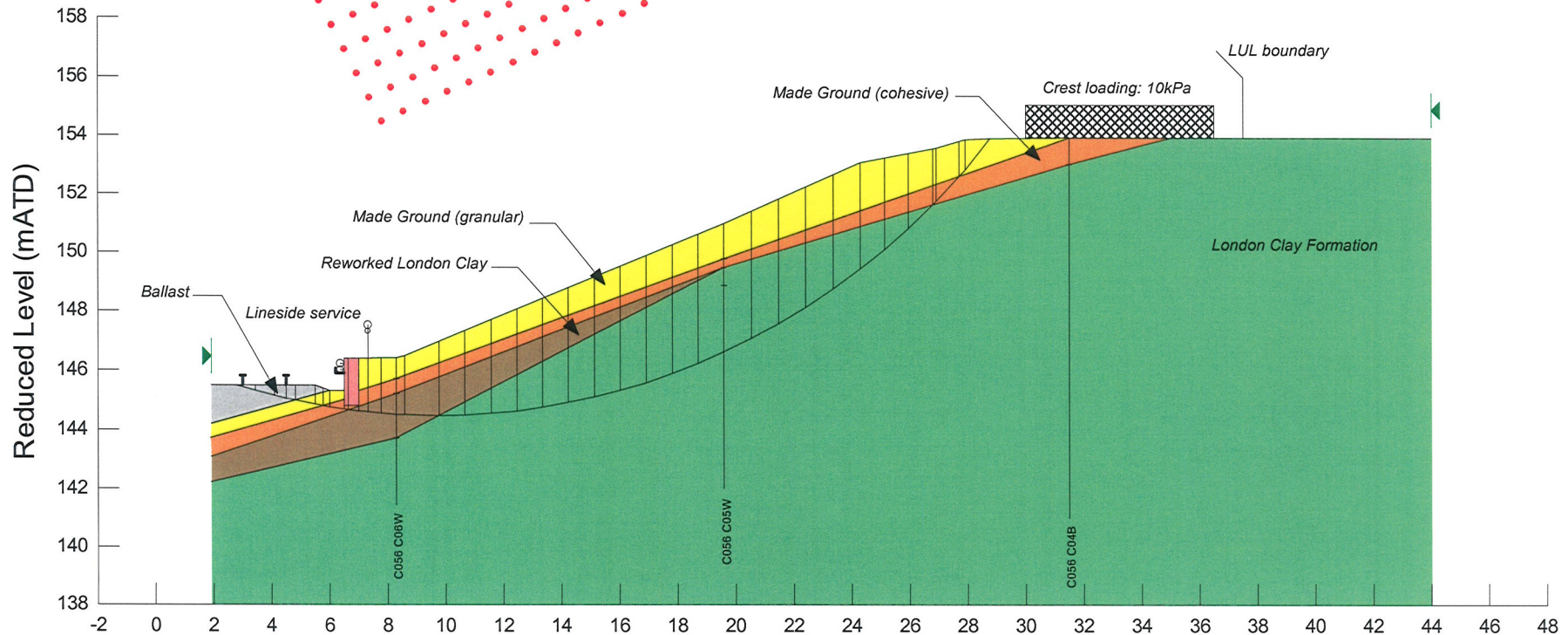
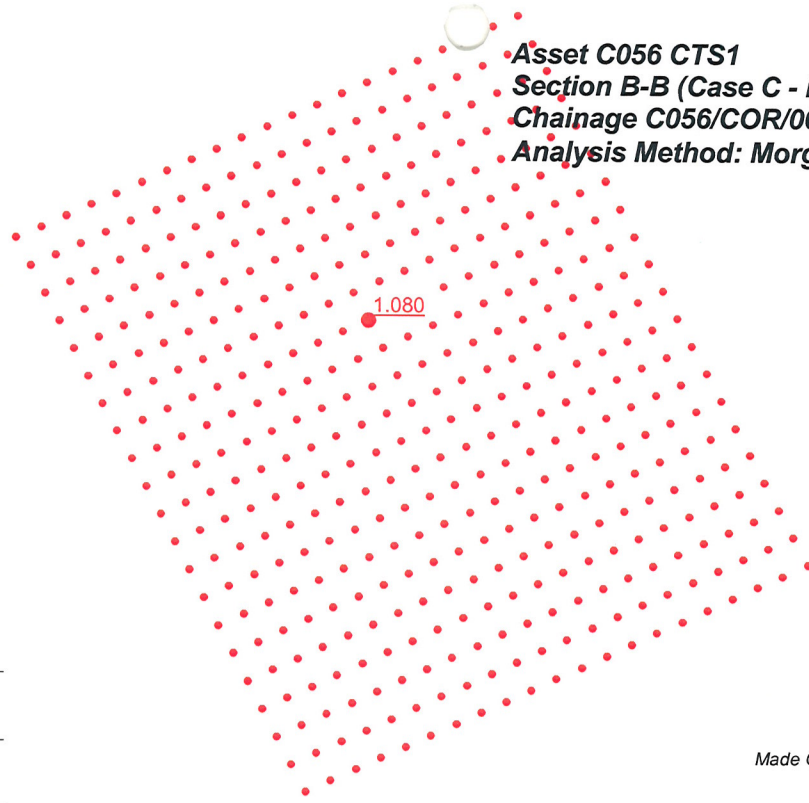
Made Ground (cohesive)
 Unit Weight: 18
 Cohesion: 0
 Phi: 28

Reworked London Clay
 Unit Weight: 19
 Cohesion: 2
 Phi: 18

London Clay Formation
 Unit Weight: 19
 Cohesion: 4
 Phi: 21

Run 6

Asset C056 CTS1
Section B-B (Case C - beneath retaining structure)
Chainage C056/COR/0643
Analysis Method: Morgenstern-Price



Wall
 Unit Weight: 24
 Cohesion: 1000
 Phi: 40
 Ru: 0

Ballast
 Unit Weight: 18
 Cohesion: 0
 Phi: 40
 Ru: 0

Made Ground (granular)
 Unit Weight: 18
 Cohesion: 0
 Phi: 28
 Ru: 0

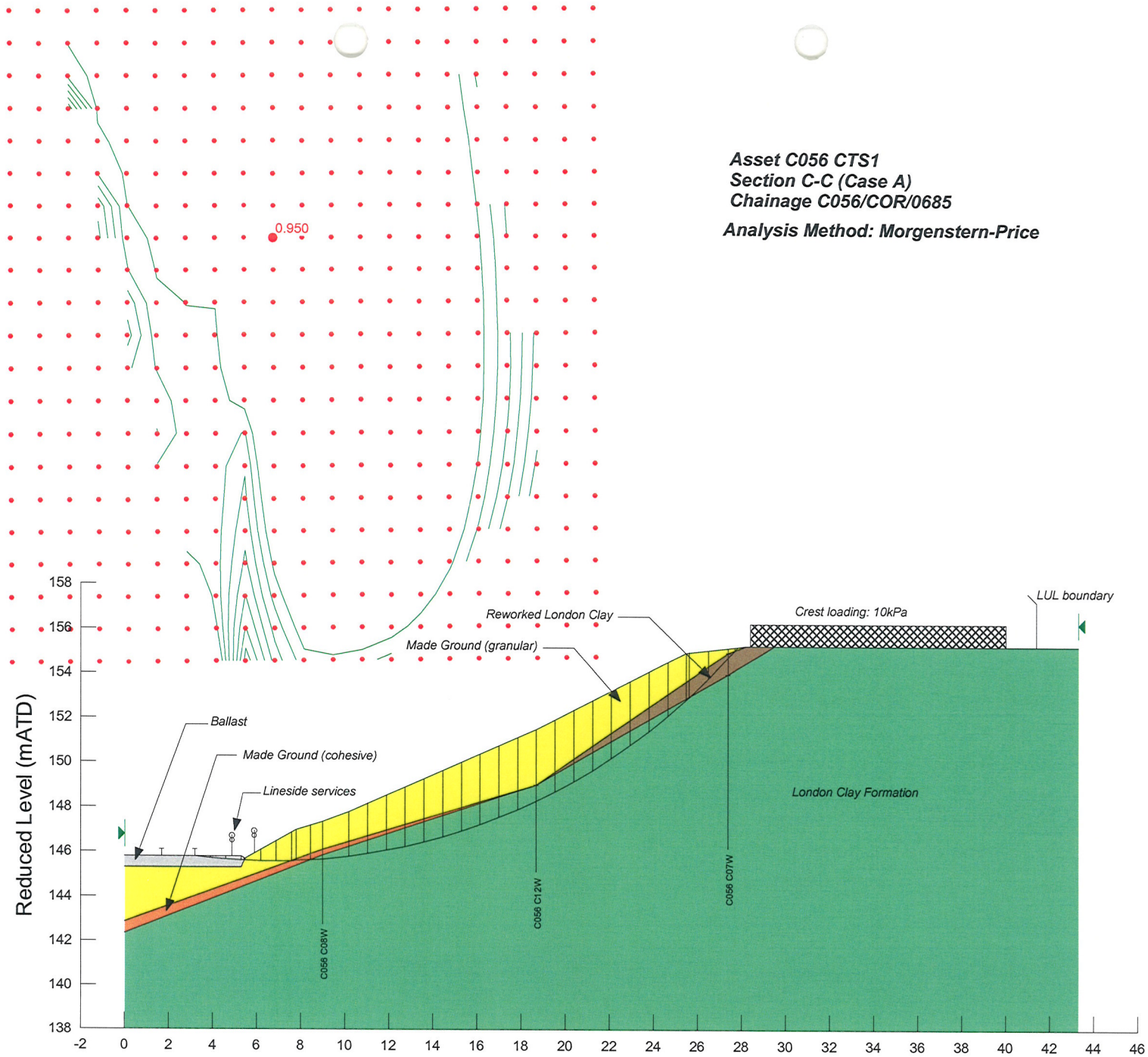
Made Ground (cohesive)
 Unit Weight: 18
 Cohesion: 0
 Phi: 28
 Ru: 0

Reworked London Clay
 Unit Weight: 19
 Cohesion: 2
 Phi: 18
 Ru (included in PWP): 0.25

London Clay Formation
 Unit Weight: 19
 Cohesion: 4
 Phi: 21
 Ru (included in PWP): 0.25

Run 7

Asset C056 CTS1
 Section C-C (Case A)
 Chainage C056/COR/0685
 Analysis Method: Morgenstern-Price



Ballast
 Unit Weight: 18
 Cohesion: 0
 Phi: 40
 Ru: 0

Made Ground (cohesive)
 Unit Weight: 18
 Cohesion: 0
 Phi: 28
 Ru: 0

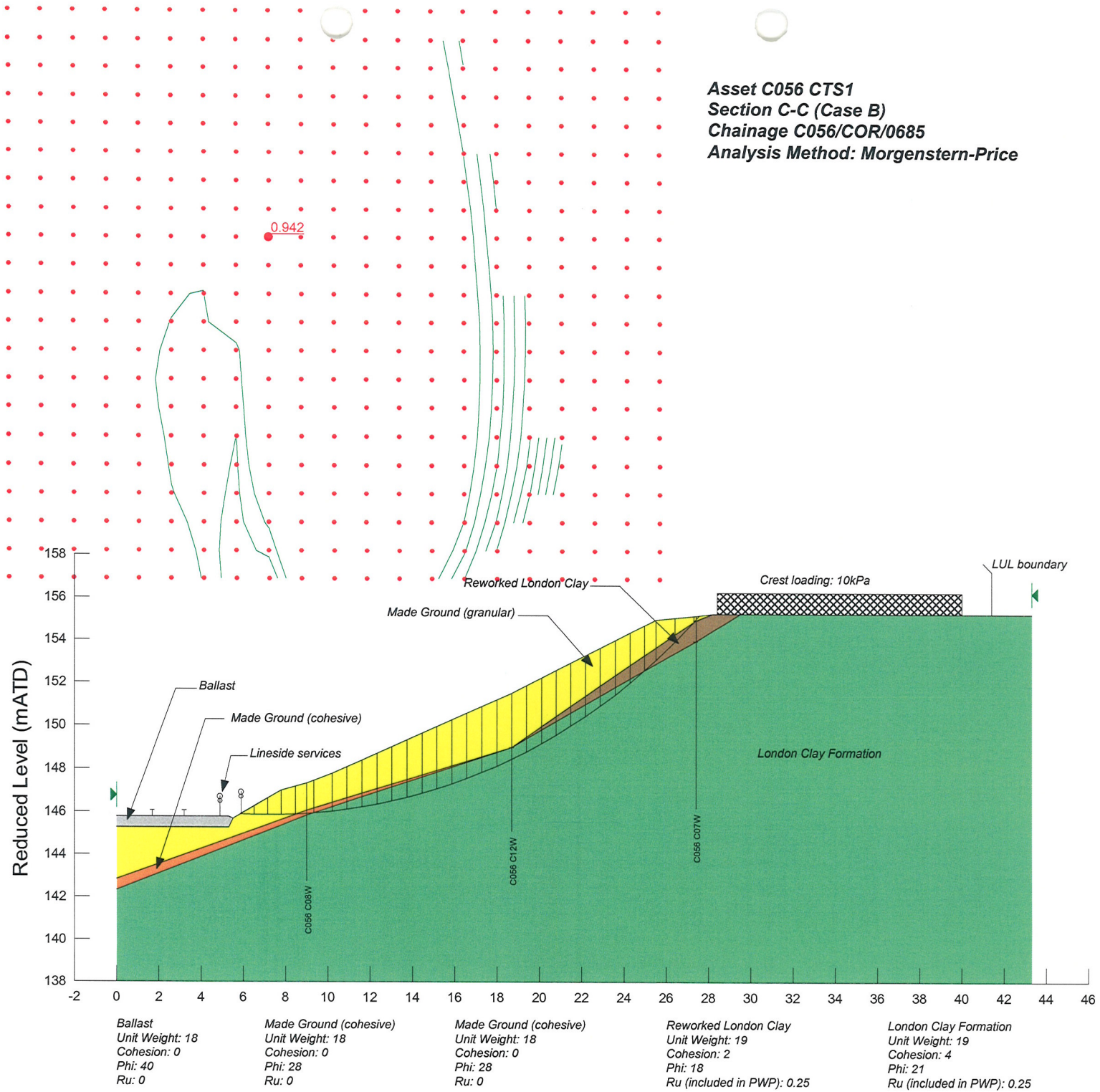
Made Ground (cohesive)
 Unit Weight: 18
 Cohesion: 0
 Phi: 28
 Ru: 0

Reworked London Clay
 Unit Weight: 19
 Cohesion: 2
 Phi: 18
 Ru (included in PWP): 0.25

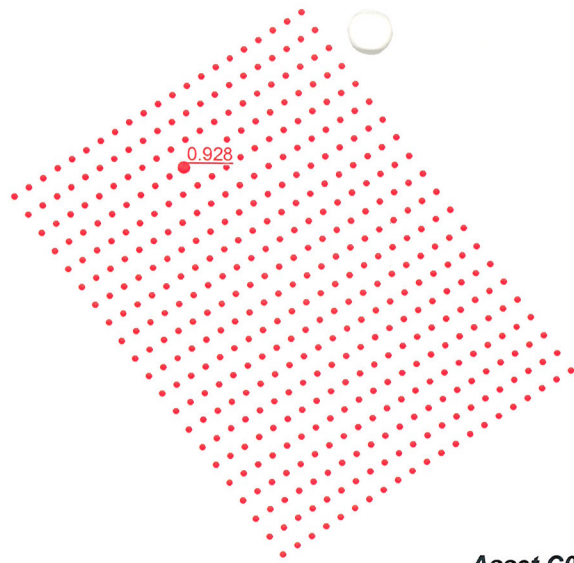
London Clay Formation
 Unit Weight: 19
 Cohesion: 4
 Phi: 21
 Ru (included in PWP): 0.25

Run 8

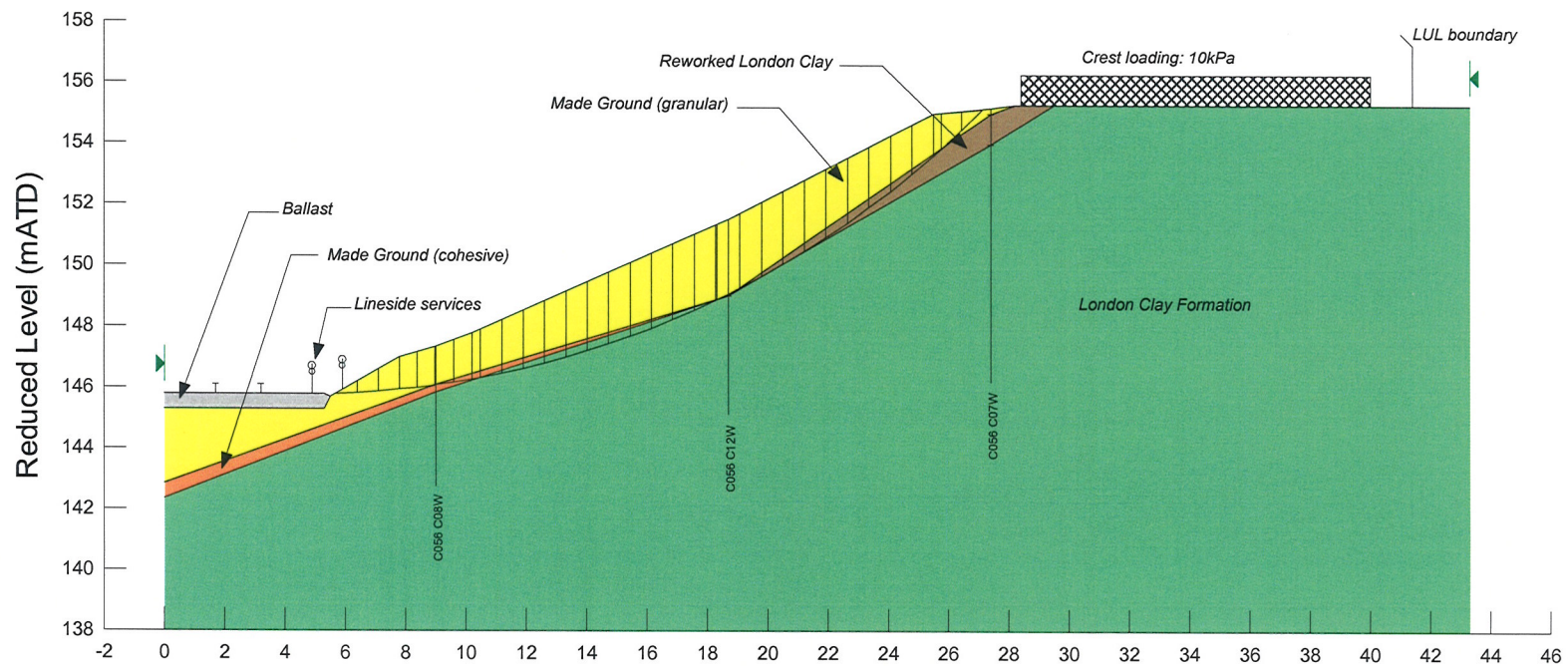
Asset C056 CTS1
Section C-C (Case B)
Chainage C056/COR/0685
Analysis Method: Morgenstern-Price



Run 9



Asset C056 CTS1
Section C-C (Case C)
Chainage C056/COR/0685
Analysis Method: Morgenstern-Price



Ballast
 Unit Weight: 18
 Cohesion: 0
 Phi: 40
 Ru: 0

Made Ground (cohesive)
 Unit Weight: 18
 Cohesion: 0
 Phi: 28
 Ru: 0

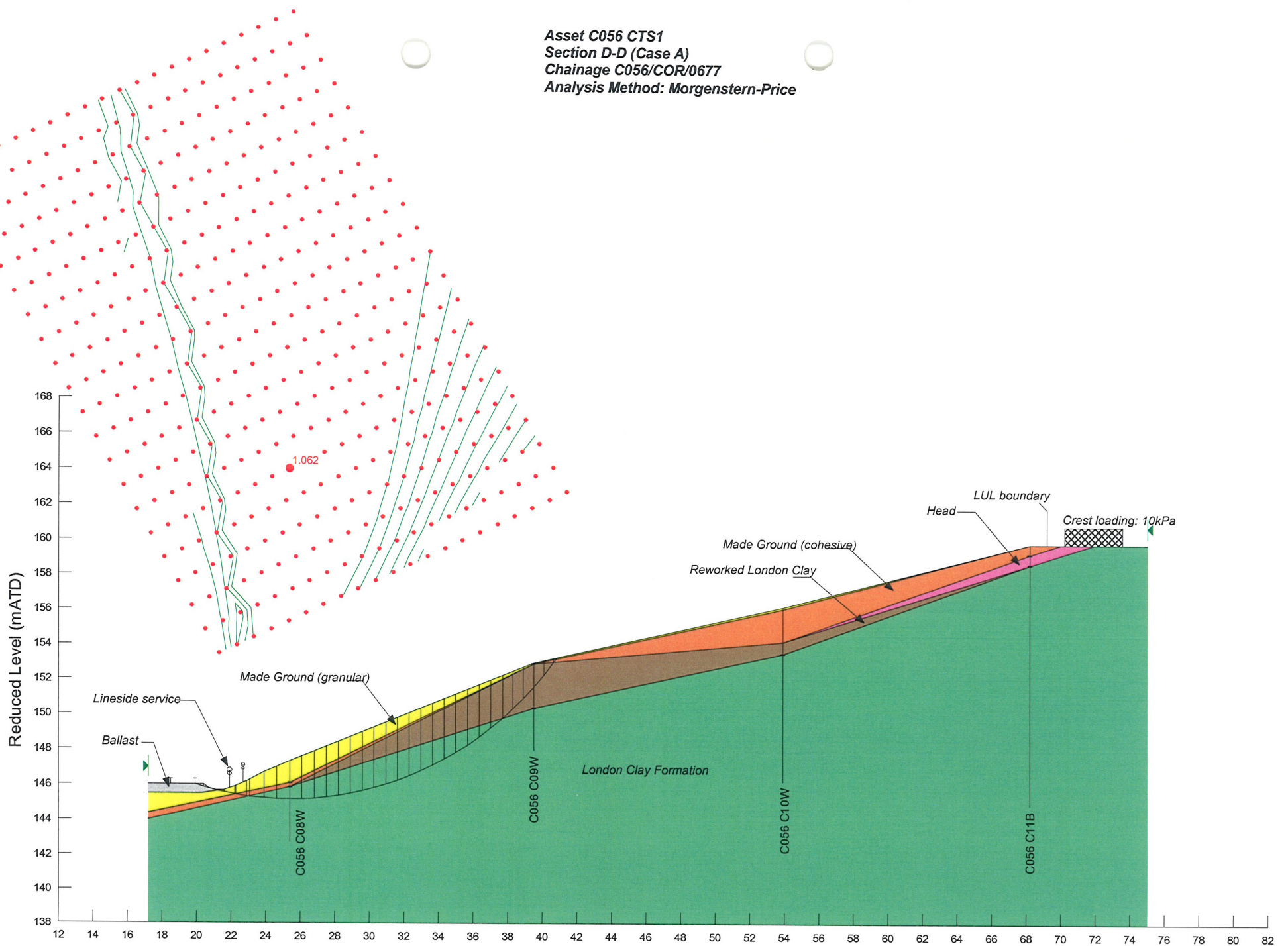
Made Ground (cohesive)
 Unit Weight: 18
 Cohesion: 0
 Phi: 28
 Ru: 0

Reworked London Clay
 Unit Weight: 19
 Cohesion: 2
 Phi: 18
 Ru (included in PWP): 0.25

London Clay Formation
 Unit Weight: 19
 Cohesion: 4
 Phi: 21
 Ru (included in PWP): 0.25

Run 10

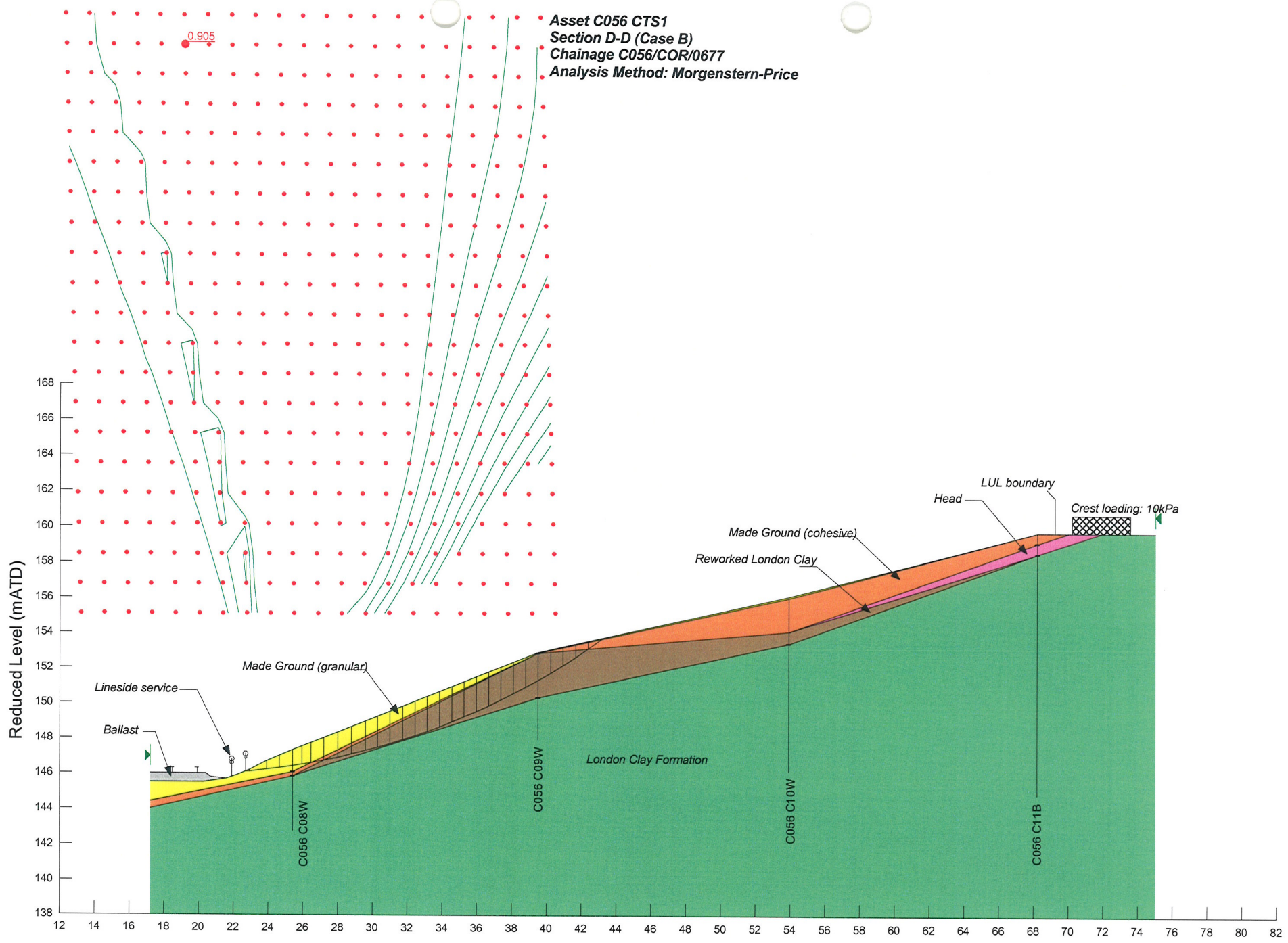
Asset C056 CTS1
 Section D-D (Case A)
 Chainage C056/COR/0677
 Analysis Method: Morgenstern-Price



Ballast Unit Weight: 18 Cohesion: 0 Phi: 40 Ru: 0	Made Ground (granular) Unit Weight: 18 Cohesion: 0 Phi: 28 Ru: 0	Made Ground (cohesive) Unit Weight: 18 Cohesion: 0 Phi: 28 Ru: 0	Head (cohesive) Unit Weight: 19 Cohesion: 1 Phi: 21 Ru: 0	Reworked London Clay Unit Weight: 19 Cohesion: 2 Phi: 18 Ru (included in PWP): 0.25	London Clay Formation Unit Weight: 19 Cohesion: 4 Phi: 21 Ru (included in PWP): 0.25
---------------------------------------------------------------	------------------------------------------------------------------------------	------------------------------------------------------------------------------	-----------------------------------------------------------------------	-------------------------------------------------------------------------------------------------	--------------------------------------------------------------------------------------------------

Run 11

Asset C056 CTS1
 Section D-D (Case B)
 Chainage C056/COR/0677
 Analysis Method: Morgenstern-Price



Lineside service
 Ballast

Made Ground (granular)

Made Ground (cohesive)
 Reworked London Clay

Head
 LUL boundary
 Crest loading: 10kPa

London Clay Formation

C056 C08W

C056 C09W

C056 C10W

C056 C11B

Ballast
 Unit Weight: 18
 Cohesion: 0
 Phi: 40
 Ru: 0

Made Ground (granular)
 Unit Weight: 18
 Cohesion: 0
 Phi: 28
 Ru: 0

Made Ground (cohesive)
 Unit Weight: 18
 Cohesion: 0
 Phi: 28
 Ru: 0

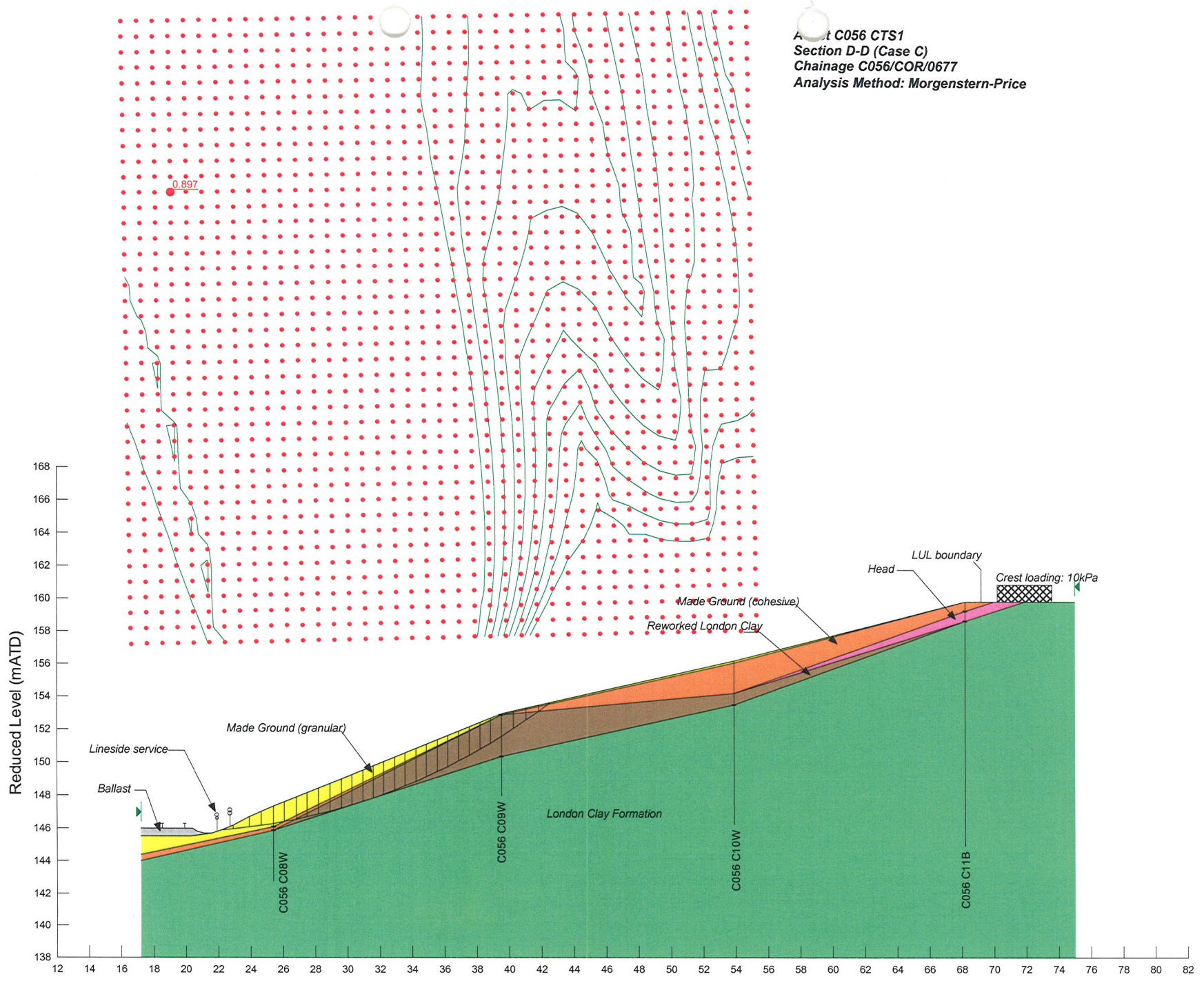
Head (cohesive)
 Unit Weight: 19
 Cohesion: 1
 Phi: 21
 Ru: 0

Reworked London Clay
 Unit Weight: 19
 Cohesion: 2
 Phi: 18
 Ru (included in PWP): 0.25

London Clay Formation
 Unit Weight: 19
 Cohesion: 4
 Phi: 21
 Ru (included in PWP): 0.25

Run 12

Asset C056 CTS1
 Section D-D (Case C)
 Chainage C056/COR/0677
 Analysis Method: Morgenstern-Price



Ballast Unit Weight: 18 Cohesion: 0 Phi: 40 Ru: 0	Made Ground (granular) Unit Weight: 18 Cohesion: 0 Phi: 28 Ru: 0	Made Ground (cohesive) Unit Weight: 18 Cohesion: 0 Phi: 28 Ru: 0	Head (cohesive) Unit Weight: 19 Cohesion: 1 Phi: 21 Ru: 0	Reworked London Clay Unit Weight: 19 Cohesion: 2 Phi: 18 Ru (included in PWP): 0.25	London Clay Formation Unit Weight: 19 Cohesion: 4 Phi: 21 Ru (included in PWP): 0.25
---------------------------------------------------------------	------------------------------------------------------------------------------	------------------------------------------------------------------------------	-----------------------------------------------------------------------	-------------------------------------------------------------------------------------------------	--------------------------------------------------------------------------------------------------

RUN 13