
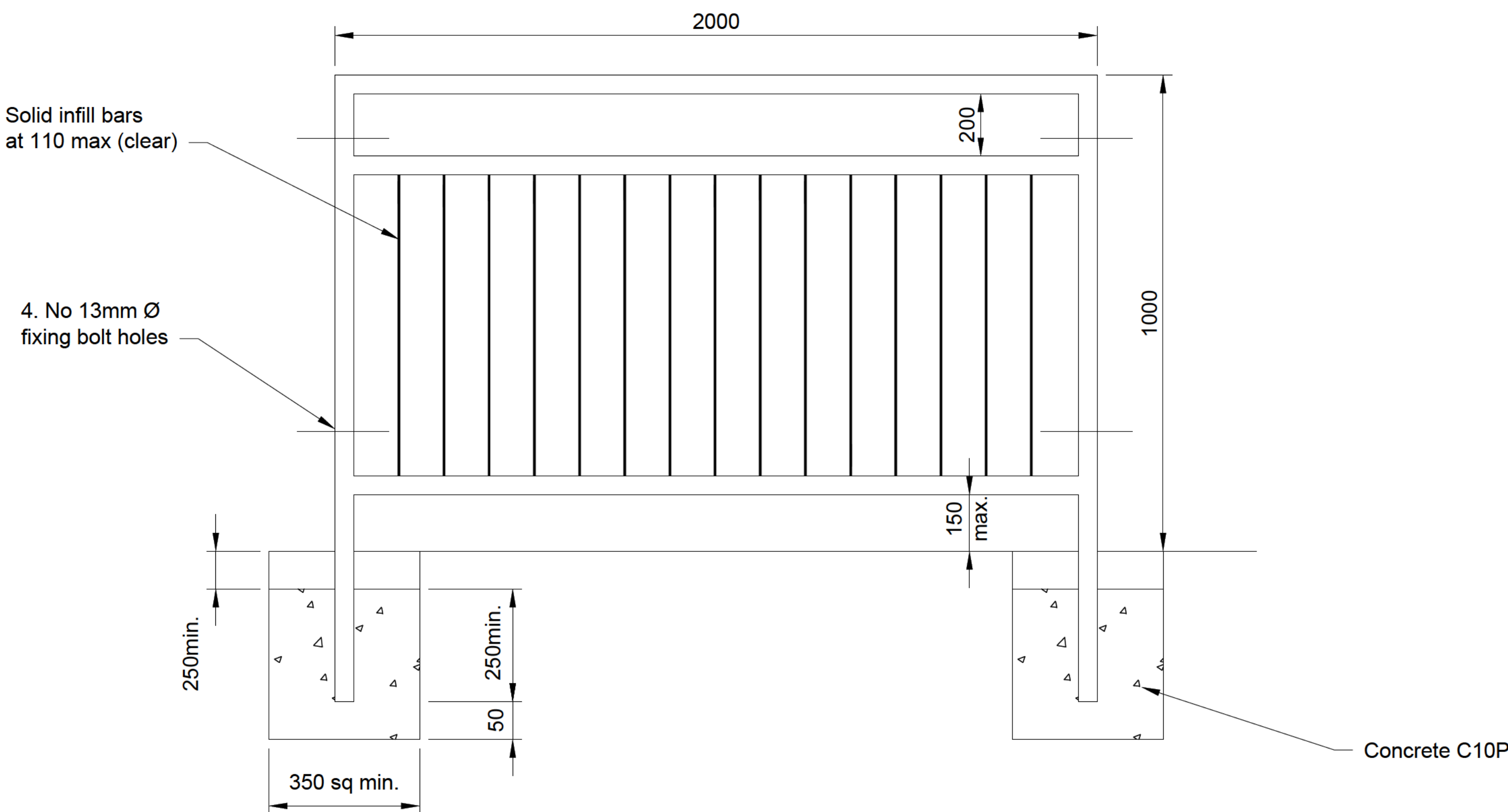


VISIRAIL OPTIONS

PANEL TYPE	PANEL LAYOUT	OPTIMUM SIGHT ANGLE	TYPICAL USES
V2		2.5° TO 5 °	STRAIGHT ROADS MODERATE TO HIGH SPEEDS
V4		5° TO 14°	STRAIGHT ROADS TO MODERATE SPEEDS, CURVES
V8		MORE THAN 14°	CURVES LESS THAN 15m Rad. e.g. BELLMOUTHS



PEDESTRIAN GUARDRAIL WITH VISIBILITY GAP TYPE 1A

FOR CONSTRUCTION

GENERAL NOTES

1. THIS DRAWING TO BE READ IN CONJUNCTION WITH ALL THE RELEVANT AECOM DRAWINGS AND SPECIFICATIONS
2. DO NOT SCALE FROM THIS DRAWING. USE FIGURED DIMENSIONS ONLY. ALL DIMENSIONS ARE IN MILLIMETERS UNLESS OTHERWISE STATED.
3. REFER TO THE CONSTRUCTION DRAWINGS FOR ALL SETTING OUT DETAILS AND FINISHED SURFACE LEVELS. ALL PAVEMENT AREAS AND TYPES TO BE CONFIRMED WITH THE SUPERVISOR PRIOR TO CONSTRUCTION.

GULLY NOTES

1. FOR DETAILS OF GULLY GRATING AND FRAME SEE THE GULLY SCHEDULES.
2. THE MINIMUM DEPTH FROM THE TOP OF THE GRATING TO THE TOP OF THE GULLY OUTLET IS TO BE 750MM WHEN THE CONNECTING PIPE IS UNDER A CARRIAGEWAY OR A HARD SHOULDER AND 500MM ELSEWHERE.

2	For Construction	AC	SJR	08.01.18
1	For Comment	AC	SJR	04.01.18
Rev	Revision details	Chkd	Appd	Date

Drawn: ANAC	Preliminary	
Design: MR	For comment	
Chkd: AC	For tender	
Appd: SJR	For construction	✓
Date: 04.01.18	As constructed	
	Other	

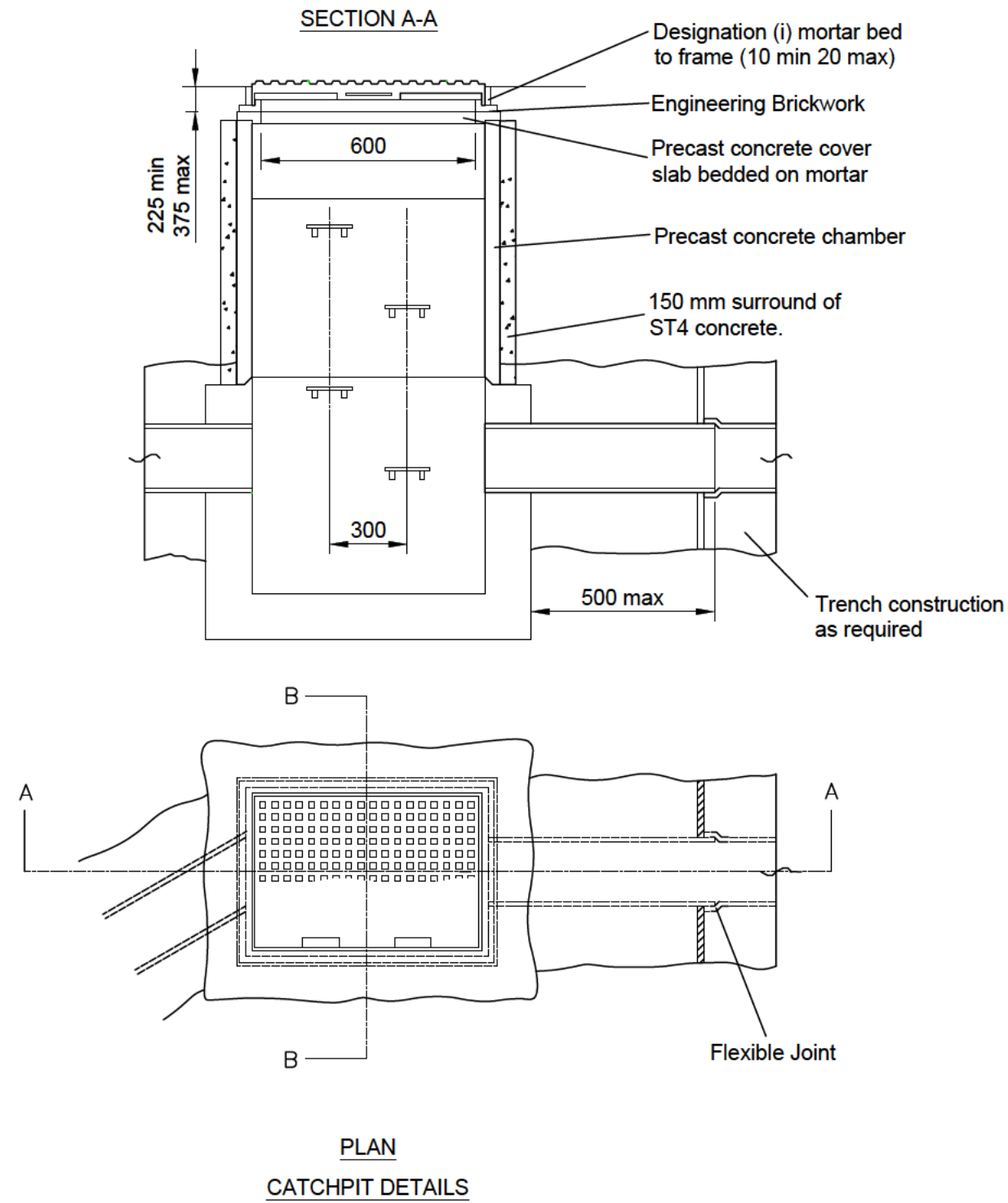
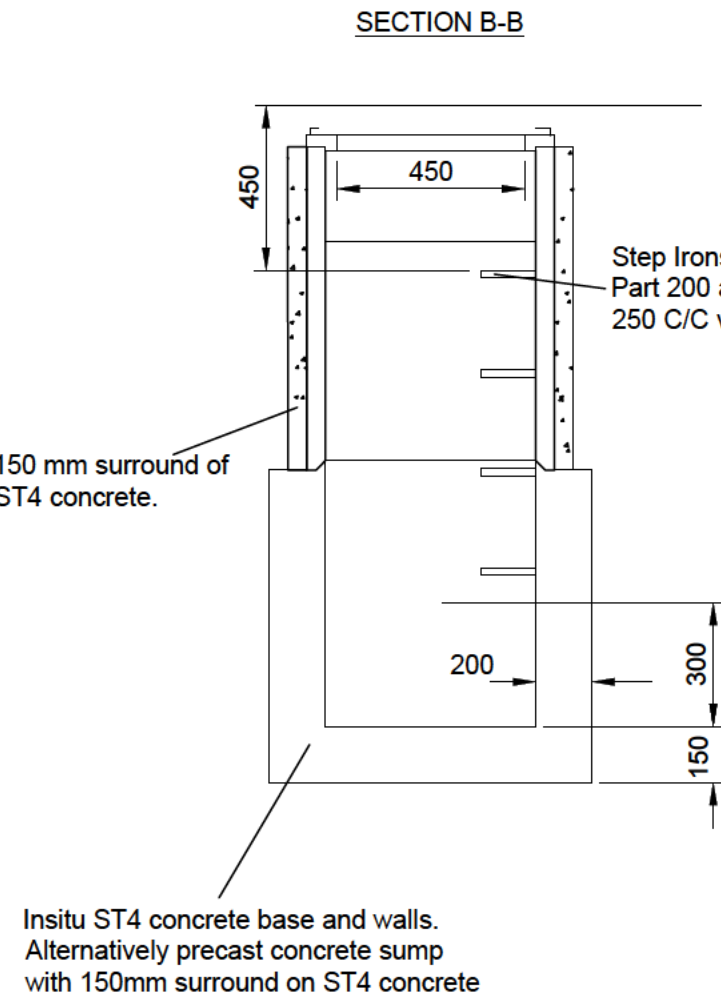
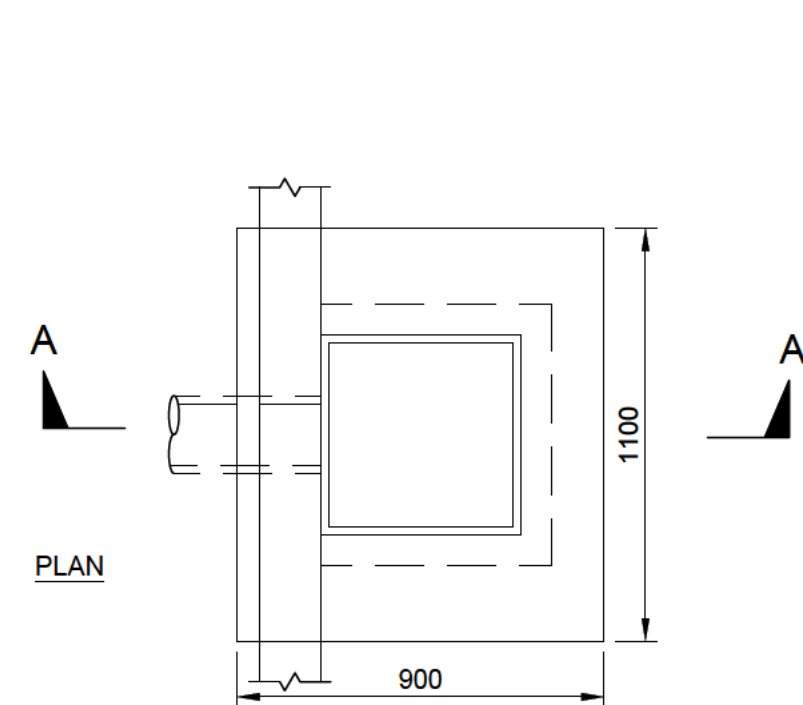
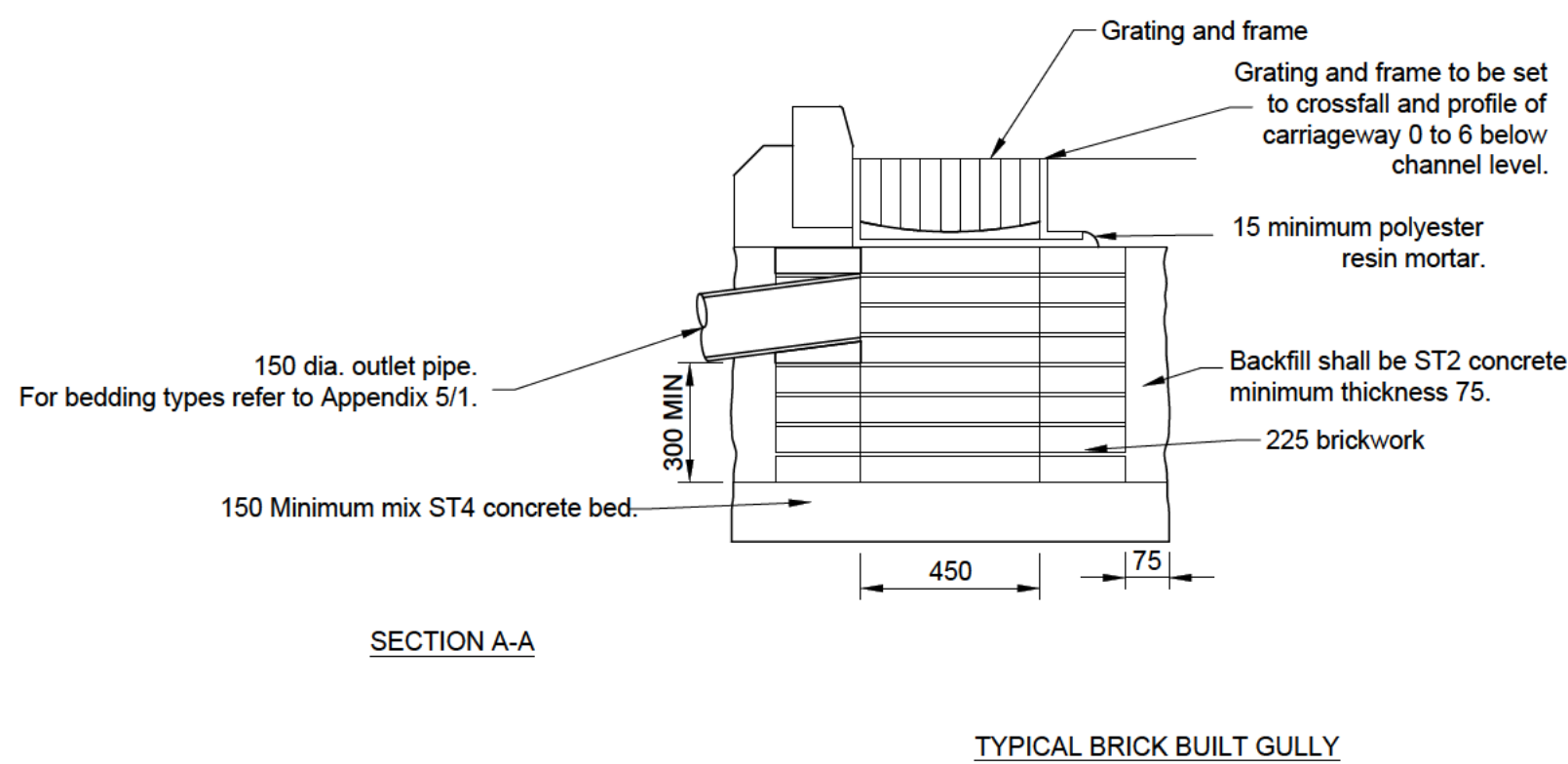
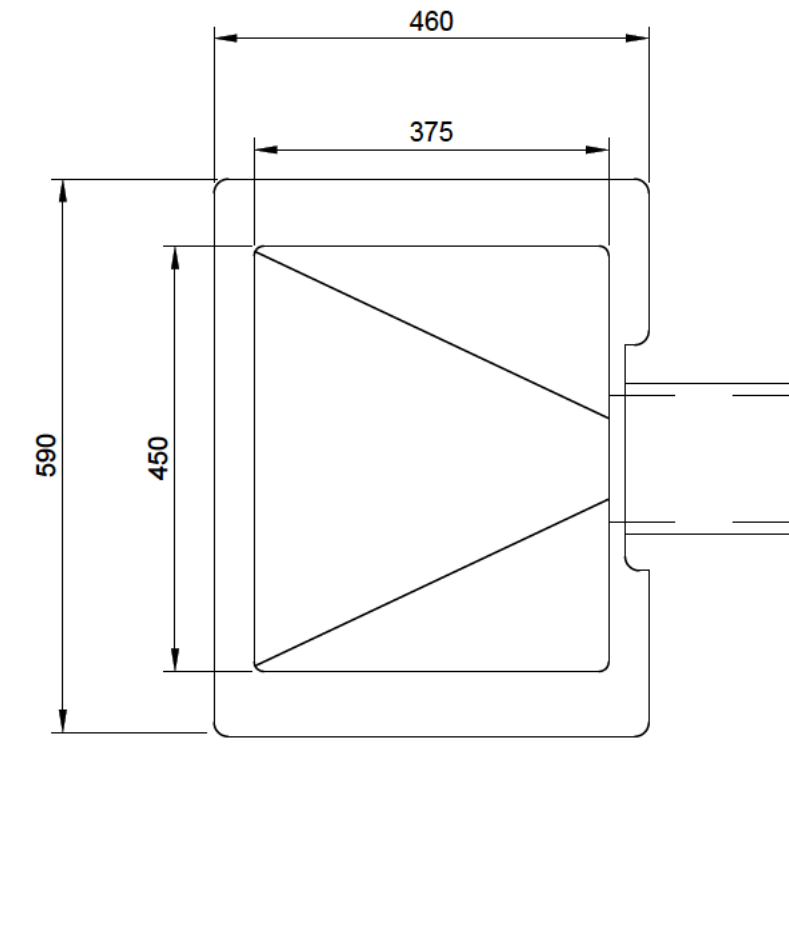
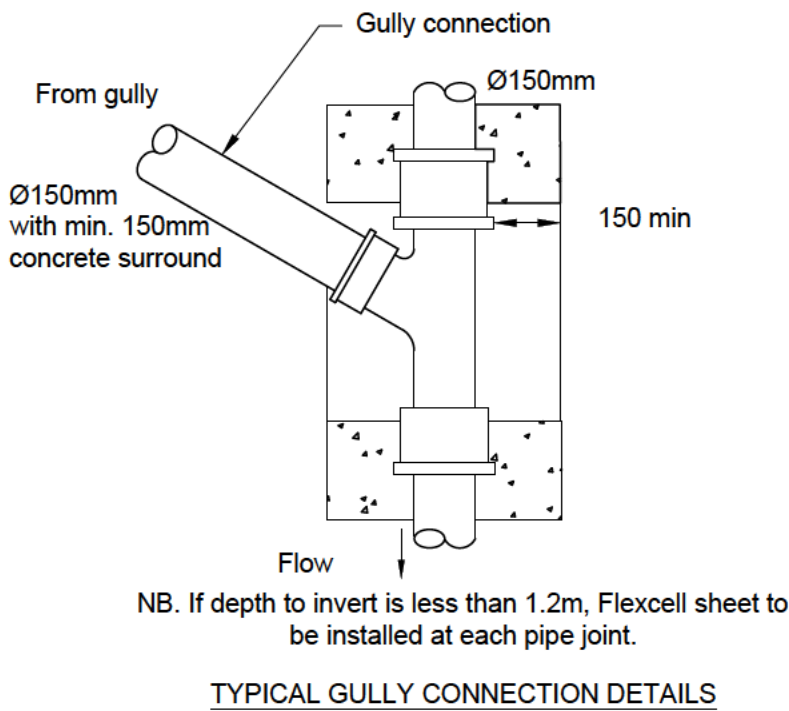
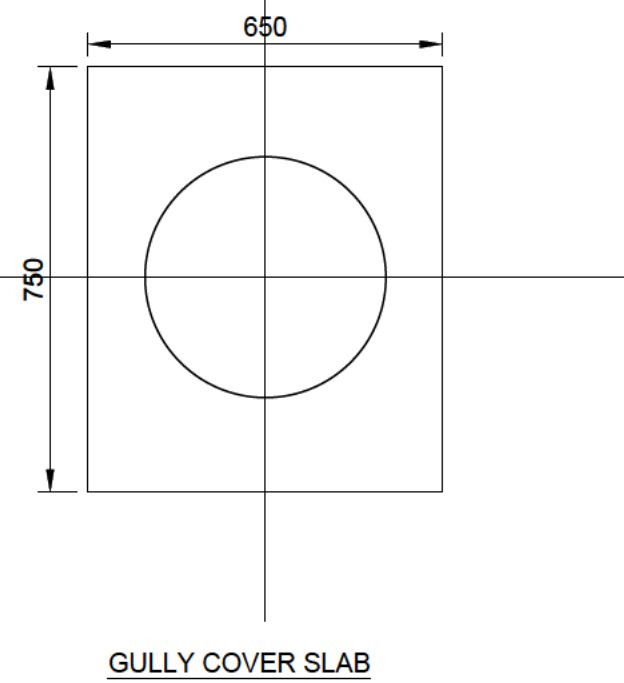
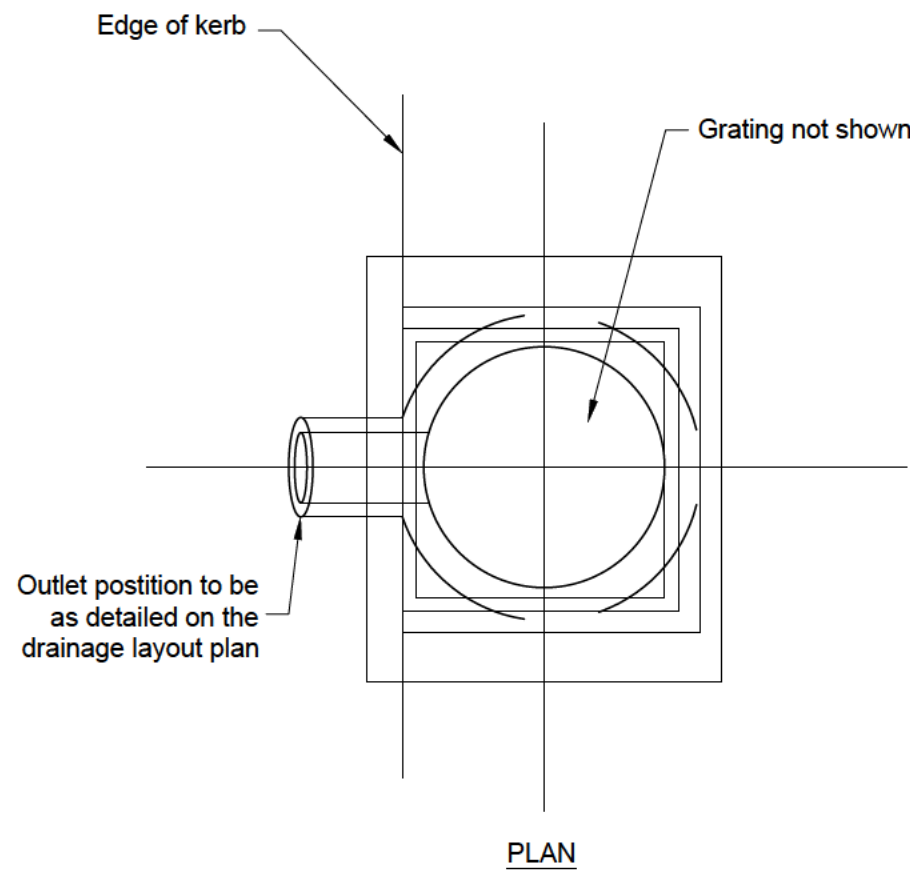
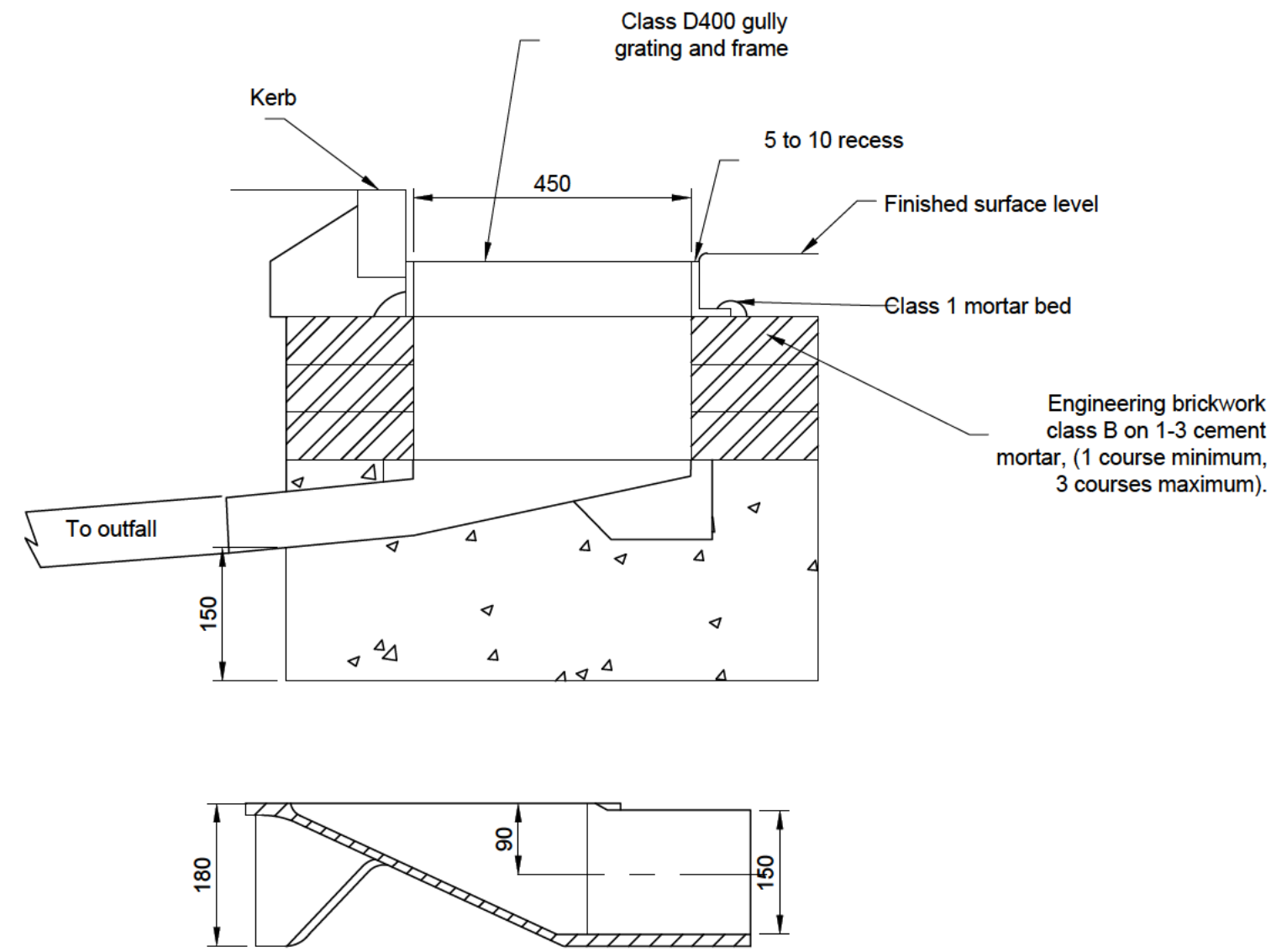
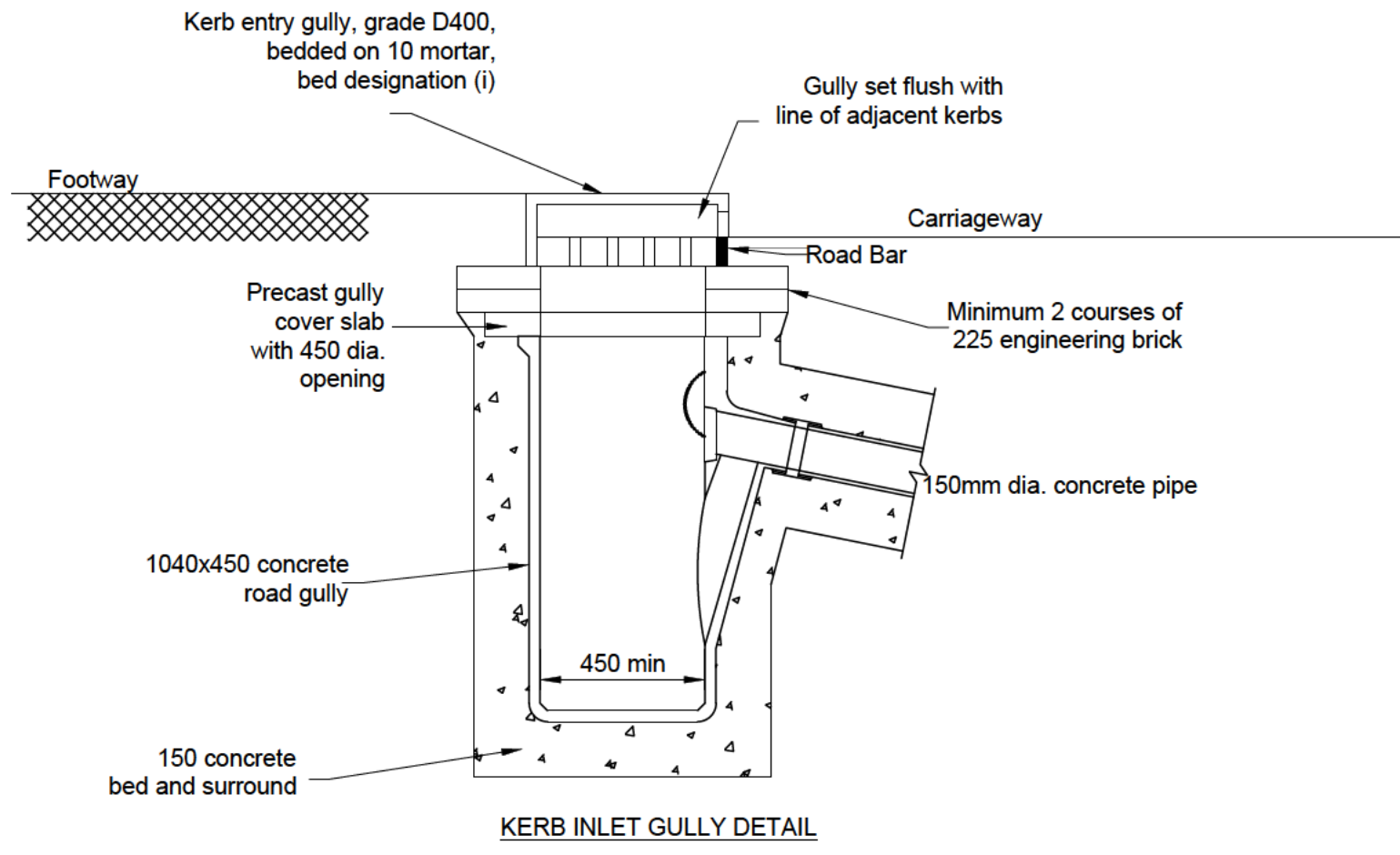
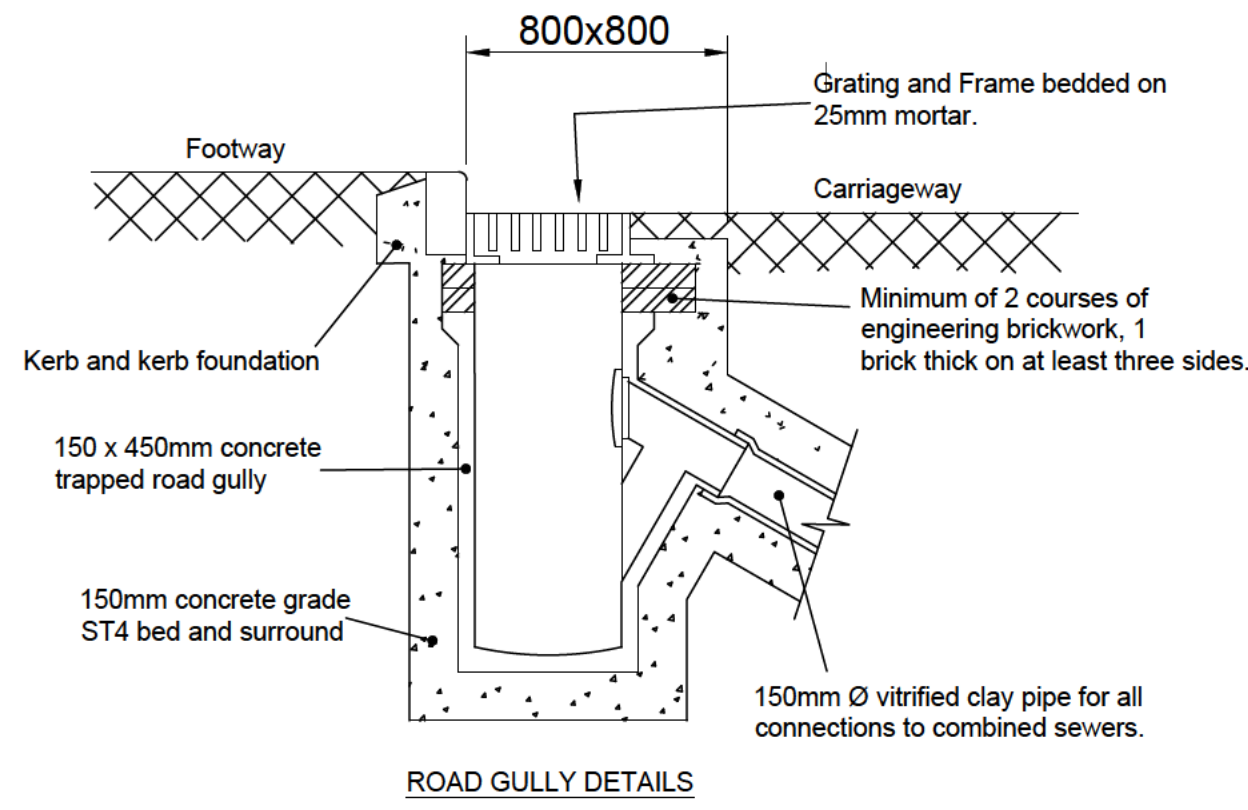


Project Name
Cycle Superhighways East - West
Construction Packages 12

Drawing Title
Transportation
STANDARD DETAILS
400 SERIES

Original Drawing Size : A1	Dimensions : mm
Scale : N.T.S	Copyright © ConwayAecom

Drawing No 60320925-F001-SD-0401	Rev 2
--	-----------------



- GENERAL NOTES
1. THIS DRAWING TO BE READ IN CONJUNCTION WITH ALL THE RELEVANT AECOM DRAWINGS AND SPECIFICATIONS DO NOT SCALE FROM THIS DRAWING. USE FIGURED DIMENSIONS ONLY. ALL DIMENSIONS ARE IN MILLIMETERS UNLESS OTHERWISE STATED.
 2. REFER TO THE CONSTRUCTION DRAWINGS FOR ALL SETTING OUT DETAILS AND FINISHED SURFACE LEVELS. ALL PAVEMENT AREAS AND TYPES TO BE CONFIRMED WITH THE SUPERVISOR PRIOR TO CONSTRUCTION.
- GULLY NOTES
1. FOR DETAILS OF GULLY GRATING AND FRAME SEE THE GULLY SCHEDULES.
 2. THE MINIMUM DEPTH FROM THE TOP OF THE GRATING TO THE TOP OF THE GULLY OUTLET IS TO BE 750MM WHEN THE CONNECTING PIPE IS UNDER A CARRIAGEWAY OR A HARD SHOULDER AND 500MM ELSEWHERE.

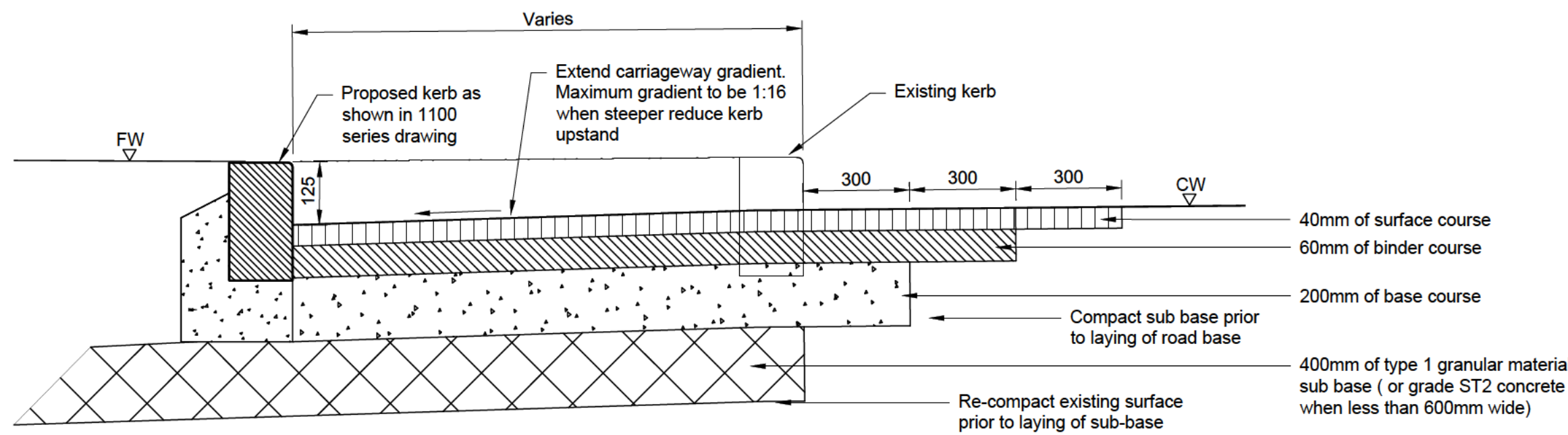
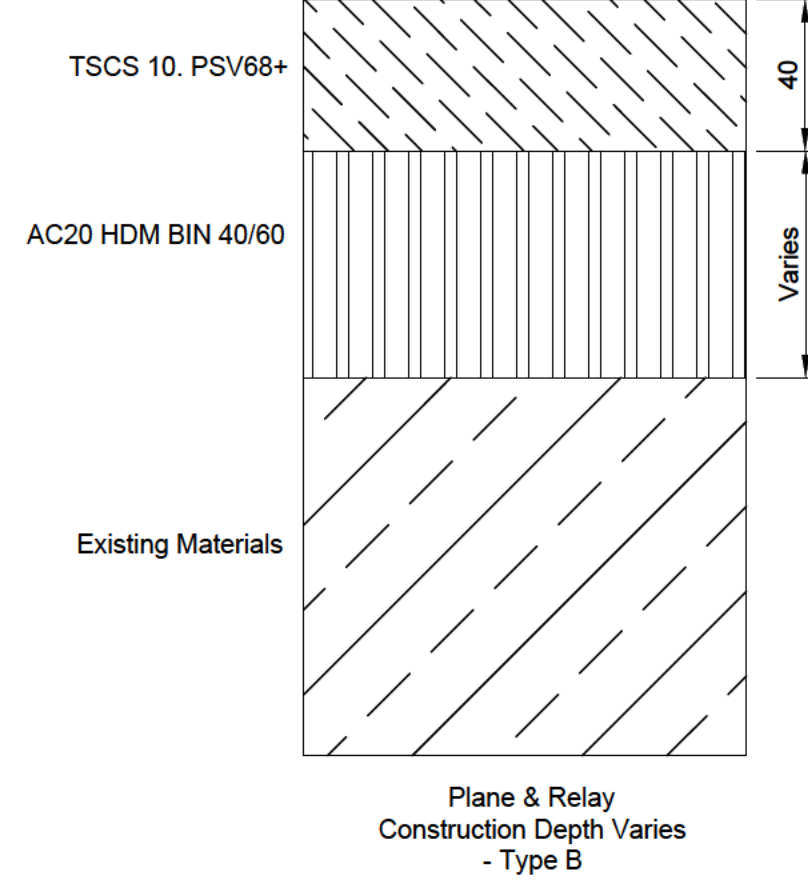
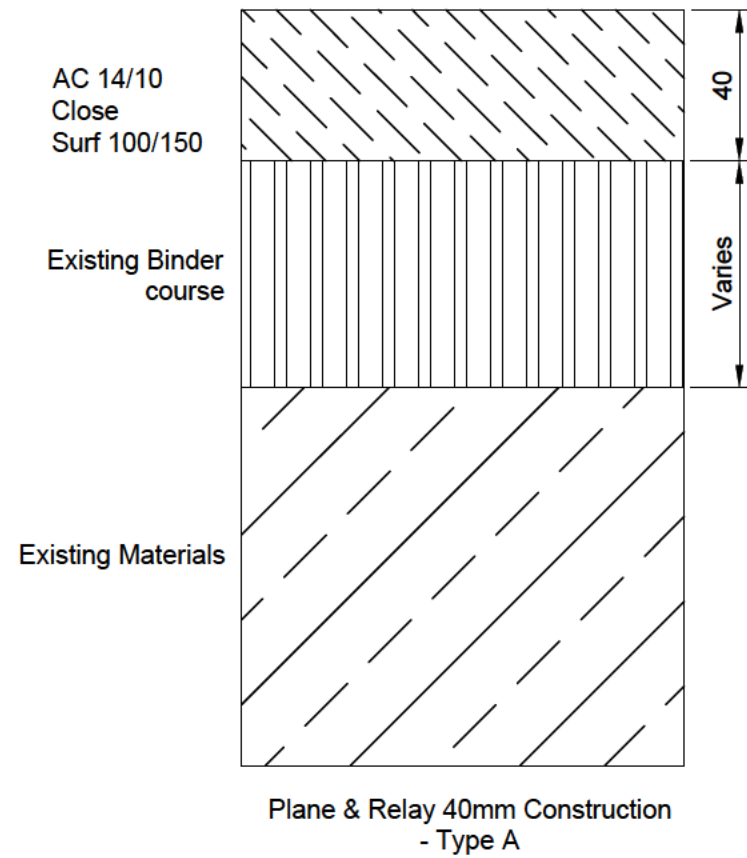
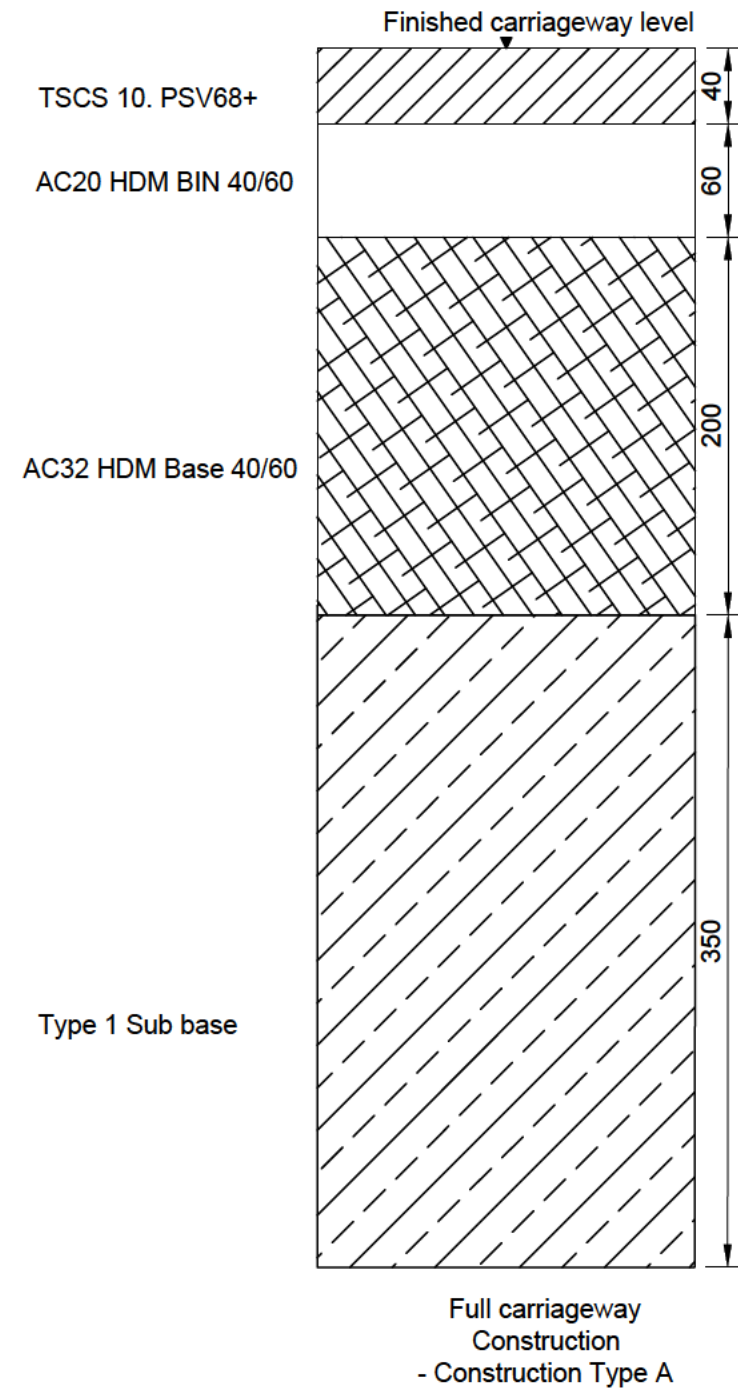
2	For Construction	AC	SJR	08.01.18
1	For Comment	AC	SJR	04.01.18
Rev	Revision details	Chkd	Appd	Date

Drawn: ANAC	Preliminary
Design: MR	For comment
Chkd: AC	For tender
Appd: SJR	For construction
Date: 04.01.18	As constructed
	Other

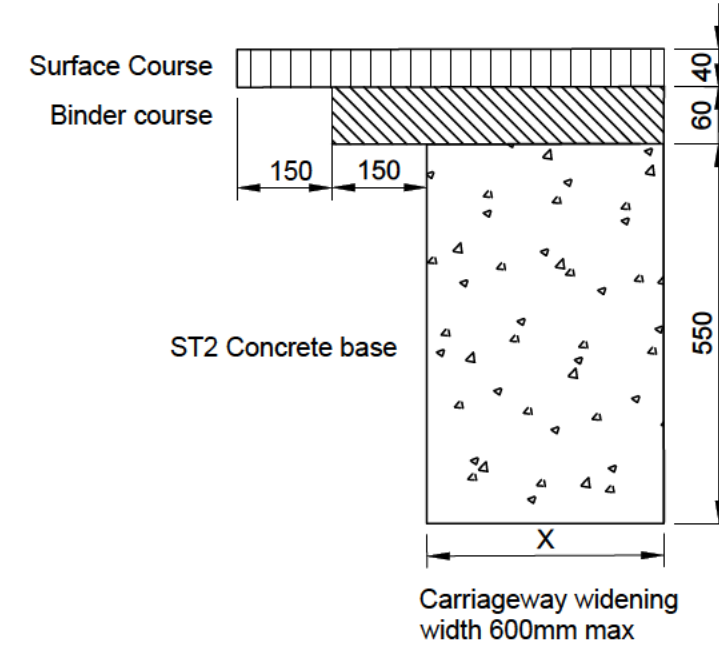


Project Name	
Cycle Superhighways East - West Construction Packages 12	
Drawing Title	
Transportation	
STANDARD DETAILS	
500 SERIES	
Original Drawing Size : A1	Dimensions : mm
Scale : N.T.S	Copyright © ConwayAecom
Drawing No	Rev
60320925-F001-SD-0501	2

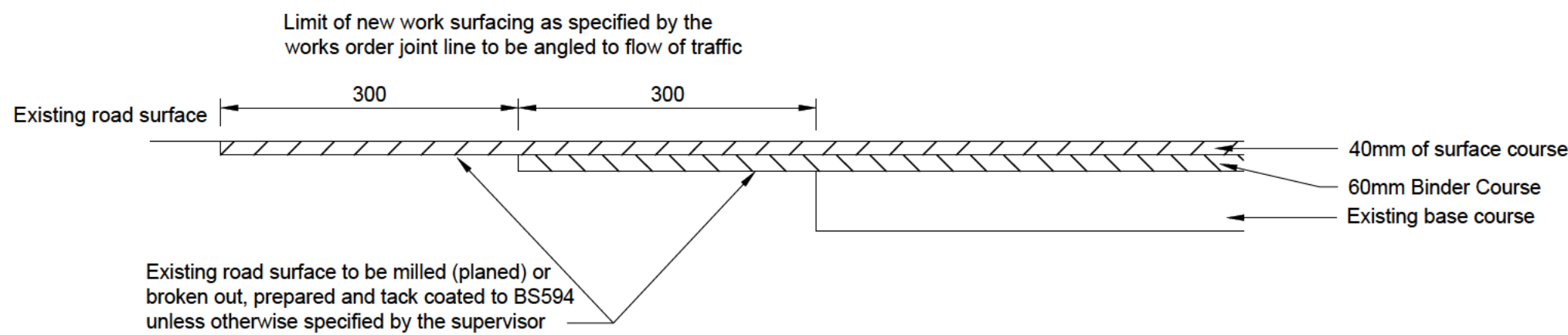
FOR CONSTRUCTION



PAVEMENT REINSTATEMENT 1: FOOTWAY CUT-BACK AND TIE-IN DETAILS



PAVEMENT REINSTATEMENT - NARROW CARRIAGEWAY WIDENING CONSTRUCTION DETAILS (FOR INSTANCES LESS THAN 600MM)



RESURFACING: TYPICAL LONGITUDINAL SECTION AT FLEXIBLE PAVEMENT TIE-INS TO EXISTING CARRIAGEWAY

GENERAL NOTES

1. THIS DRAWING TO BE READ IN CONJUNCTION WITH ALL THE RELEVANT AECOM DRAWINGS AND SPECIFICATIONS
2. DO NOT SCALE FROM THIS DRAWING. USE FIGURED DIMENSIONS ONLY. ALL DIMENSIONS ARE IN MILLIMETERS UNLESS OTHERWISE STATED.
3. REFER TO THE CONSTRUCTION DRAWINGS FOR ALL SETTING OUT DETAILS AND FINISHED SURFACE LEVELS. ALL PAVEMENT AREAS AND TYPES TO BE CONFIRMED WITH THE SUPERVISOR PRIOR TO CONSTRUCTION.

2	For Construction	AC	SJR	08.01.18
1	For Comment	AC	SJR	04.01.18
Rev	Revision details	Chkd	Appd	Date

Drawn: ANAC	Preliminary
Design: MR	For comment
Chkd: AC	For tender
Appd: SJR	For construction
Date: 04.01.18	As constructed
	Other



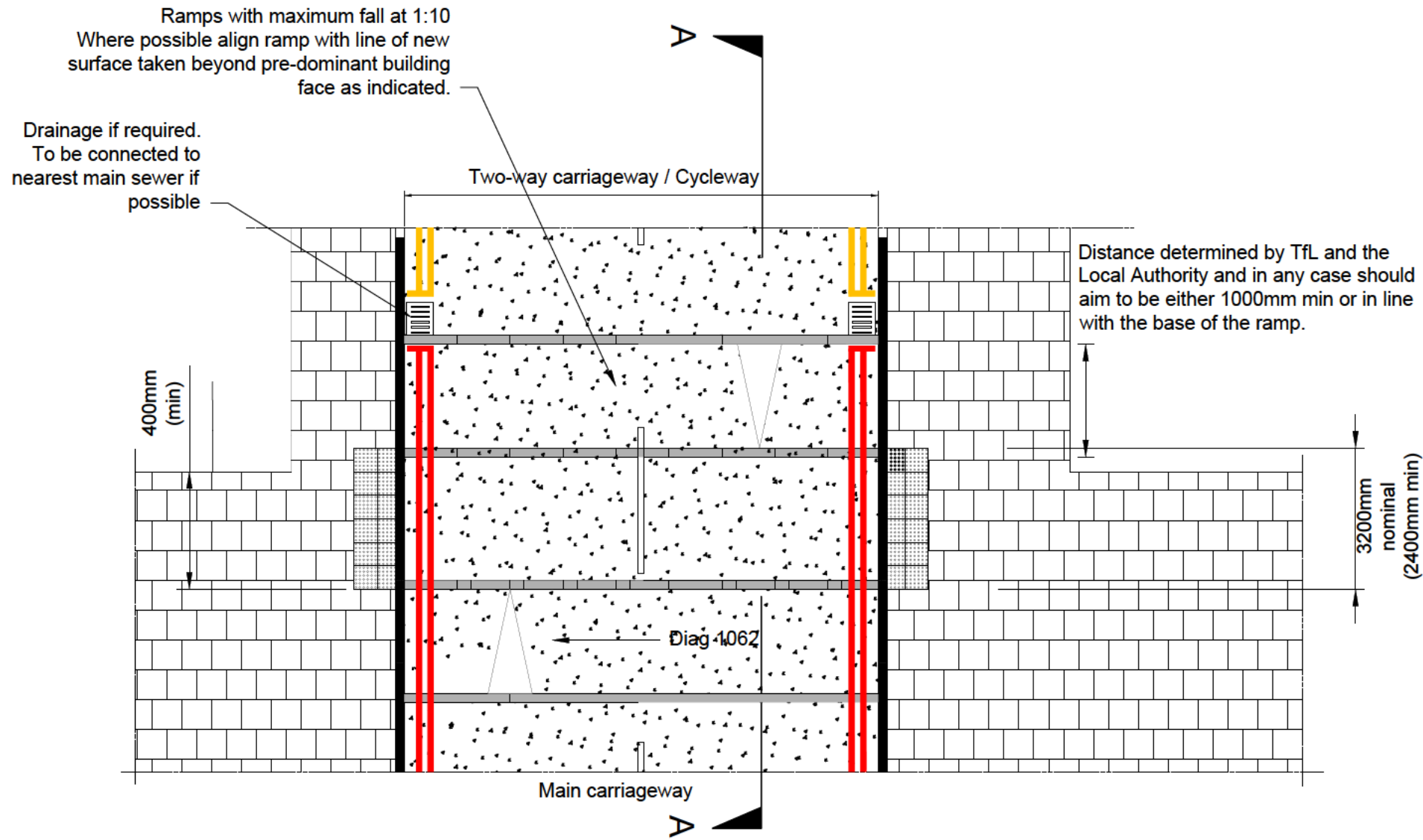
Project Name
Cycle Superhighways East - West
Construction Packages 12

Drawing Title
Transportation
STANDARD DETAILS
700 SERIES

Original Drawing Size : A1	Dimensions : mm
Scale : N.T.S	Copyright © ConwayAecom

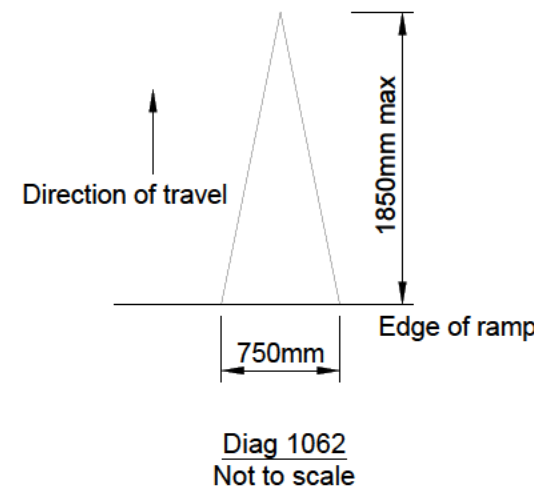
Drawing No 60320925-F001-SD-0701	Rev 2
-------------------------------------	----------

FOR CONSTRUCTION

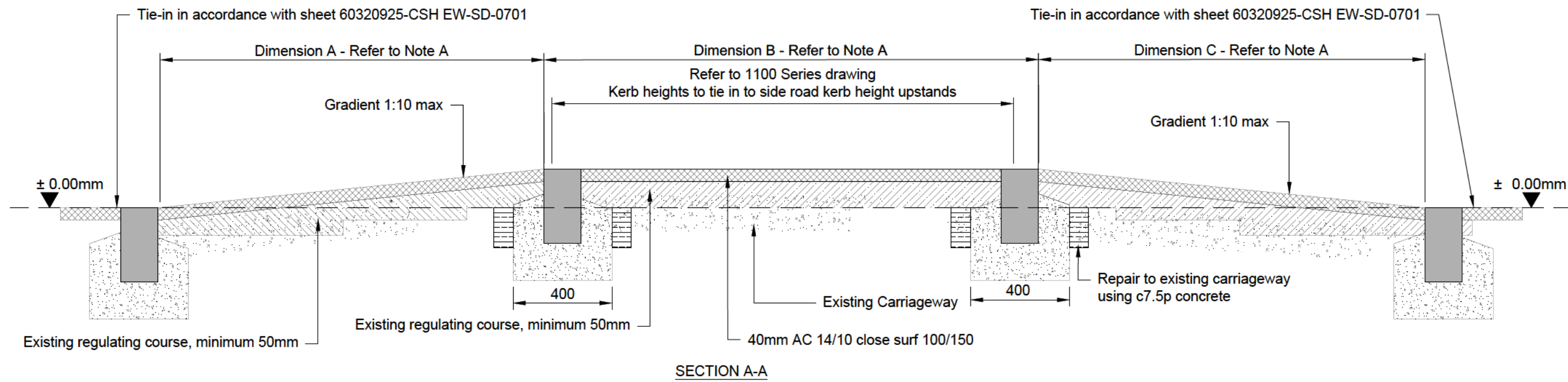


LEGEND

- Tactile 'blister' paving, 400x400x65mm
- Kerb, as shown in design drawing
- Asphalt surfacing
- Modular paving slabs, as per design drawing
- Road markings in thermoplastic screed or equivalent



Note A
The length of dimension A,B,C varies depending on site levels, footway widths and corner radii



GENERAL NOTES

- THIS DRAWING TO BE READ IN CONJUNCTION WITH ALL THE RELEVANT AECOM DRAWINGS AND SPECIFICATIONS
- DO NOT SCALE FROM THIS DRAWING. USE FIGURED DIMENSIONS ONLY. ALL DIMENSIONS ARE IN MILLIMETERS UNLESS OTHERWISE STATED.
- REFER TO THE CONSTRUCTION DRAWINGS FOR ALL SETTING OUT DETAILS AND FINISHED SURFACE LEVELS. ALL PAVEMENT AREAS AND TYPES TO BE CONFIRMED WITH THE SUPERVISOR PRIOR TO CONSTRUCTION.

RAISED TABLE NOTES

- THIS DRAWING IS BASED ON TFL STREETSCAPE GUIDANCE STANDARD DETAILS SG028 REV4 (APRIL 2008)
- ALL PAVING TO BE LAID ON A 150MM THICK TYPE C7.5P CONCRETE SUB BASE EXTENDING 1000MM FROM BACK OF KERB UNLESS OTHERWISE SPECIFIED. THE REMAINING AREA OF FOOTWAY TO BE LAID ON 100MM THICK TYPE C7.5P CONCRETE SUB BASE UNLESS OTHERWISE STATED. ALL CONCRETE FLAGS AND TACTILE PAVING TO BE BEDDED ON A 30MM SAND/CEMENT MORTAR MIX, BUTT JOINTED, WITH DRY SAND BRUSHED INTO JOINTS. THE RESIDENT ENGINEER SHOULD BE ADVISED WHERE THE PREFERRED DEPTH OF CONSTRUCTION CANNOT BE ACHIEVED ON SITE.
- CONCRETE FLAGS TO BE LAID WITH COURSES SET AT 90° TO KERB AND A MINIMUM OVERLAP BOND OF 150MM.
- THE BONDING OF PAVING TO BE CUT AROUND UTILITY SERVICE COVERS UNLESS DIRECTED BY THE RESIDENT ENGINEER.
- CONCRETE FLAGS SHOULD NOT BE CUT SO THAT A WIDTH LESS THAN 300MM REMAINS. PREVIOUS COURSES SHOULD BE CUT TO DISTRIBUTE EVENLY OVER WIDTH.
- GRANITE KERBS TO BE AS SHOWN IN DESIGN DRAWING. 900-1200MM LONG. STANDARD KERB HEIGHT TO BE 125MM ABOVE CARRIAGEWAY.
- EXISTING UTILITY SERVICE COVERS IN PAVED AREAS TO BE REPLACED WITH RECESSED COVERS AND INFILLED WITH MATCHING PAVING. COVERS TO BE ADJUSTED TO SUIT ON SITE AS DIRECTED BY THE RESIDENT ENGINEER. (REF DWGS TFL/SG21 & SG22)
- LATERAL CLEARANCE TO ALL STREET FURNITURE TO BE 450MM MINIMUM FROM FACE OF KERB.
- ALL WORK TO BE CARRIED OUT IN COMPLIANCE WITH THE REQUIREMENTS OF THE MANUAL HANDLING OPERATIONS REGULATIONS 1992 (AS AMENDED IN 2002).
- PAINT MARKINGS TO BE IN ACCORDANCE WITH TRAFFIC SIGNS MANUAL CHAPTER 5.

2	For Construction	AC	SJR	08.01.18
1	For Comment	AC	SJR	04.01.18
Rev	Revision details	Chkd	Appd	Date

Drawn: ANAC	Preliminary	
Design: MR	For comment	
Chkd: AC	For tender	
Appd: SJR	For construction	✓
Date: 04.01.18	As constructed	
	Other	



Project Name
Cycle Superhighways East - West
Construction Packages 12

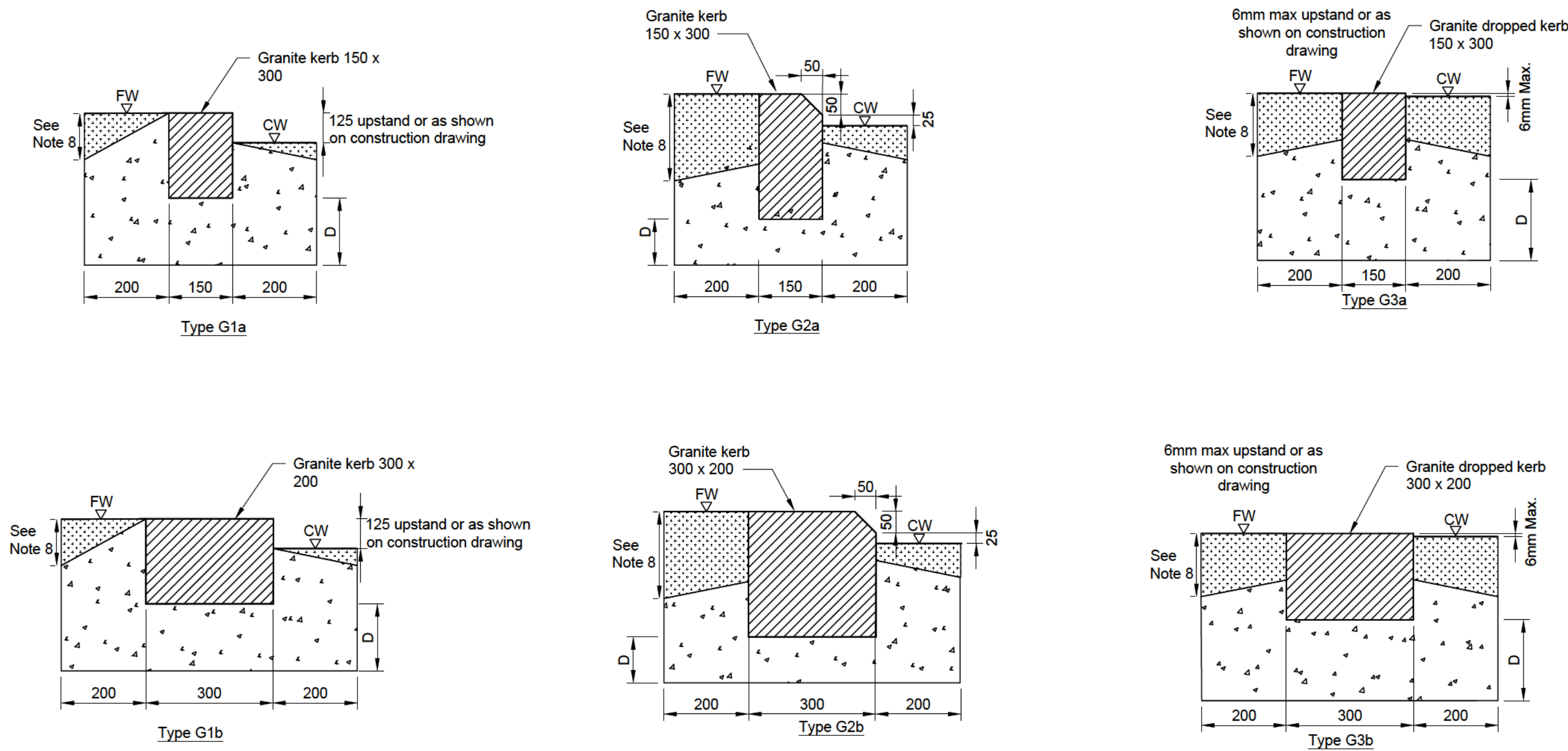
Drawing Title
Transportation
STANDARD DETAILS
700 SERIES

Original Drawing Size : A1	Dimensions : mm
Scale : N.T.S	Copyright © ConwayAecom

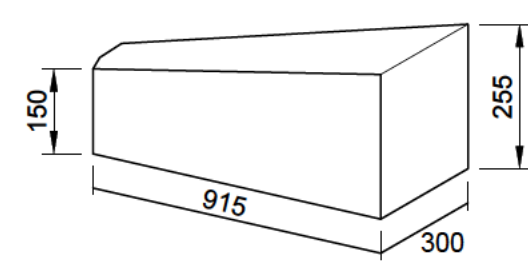
Drawing No 60320925-F001-SD-0702	Rev 2
-------------------------------------	----------

FOR CONSTRUCTION

GRANITE KERB DETAILS

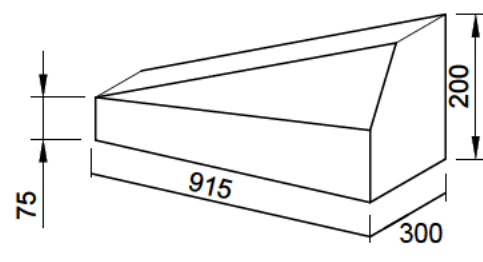


TRANSITION KERB DETAILS



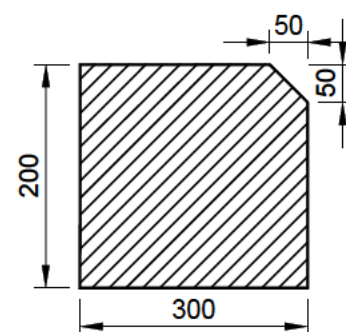
T1

Transition between Dropped and Full Height Kerb

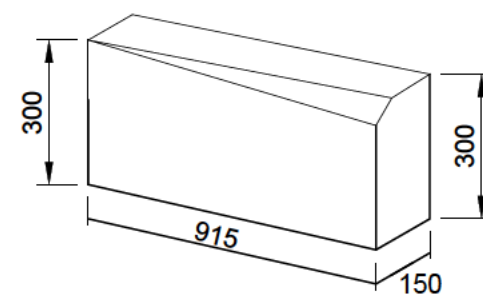


T2

Transition between Splayed edge and 90° edge (Dropped Kerb)

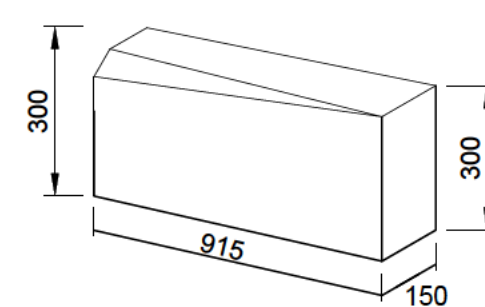


Cross Section

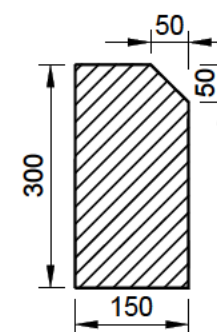


T3

Transition between Splayed edge and 90° edge (Full Height Kerb)

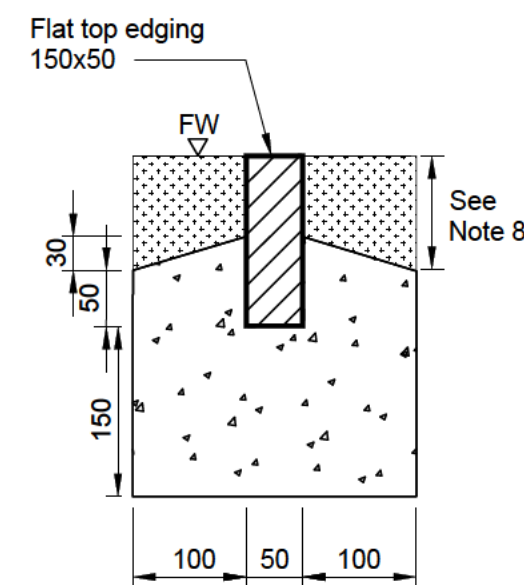


T4



Cross Section

EDGING AND CHANNELS



Type E1a

GENERAL NOTES

1. THIS DRAWING TO BE READ IN CONJUNCTION WITH ALL THE RELEVANT AECOM DRAWINGS AND SPECIFICATIONS
2. DO NOT SCALE FROM THIS DRAWING. USE FIGURED DIMENSIONS ONLY. ALL DIMENSIONS ARE IN MILLIMETERS UNLESS OTHERWISE STATED
3. REFER TO THE CONSTRUCTION DRAWINGS FOR ALL SETTING OUT DETAILS AND FINISHED SURFACE LEVELS. ALL PAVEMENT AREAS AND TYPES TO BE CONFIRMED WITH THE SUPERVISOR PRIOR TO CONSTRUCTION.

KERB NOTES

1. GRANITE KERBS SHALL COMPLY WITH BS EN 1343.
2. ALL GRANITE KERBS TO BE FINE PICKED SILVER GREY.
3. KERBS TO BE LAID IN ACCORDANCE WITH MCHW.VOLUME1.SERIES1100.C1.1101.
4. ALL KERBS SHALL BE 800 TO 1000 IN LENGTH.
5. CONCRETE SHALL BE TO MCHW.VOLUME1.SERIES2600.C1.2602.
6. THE BASE OF THE KERB BEDDING IS TO BE SET LEVEL WITH THE TOP OF THE SUB-BASE SUBJECT TO DIMENSION D BEING A MINIMUM OF 150.
7. WHERE THE RE-USE OF RECLAIMED MATERIALS IS PERMITTED, THEY SHALL BE RE-DRESSED TO THE ACCEPTANCE OF THE SUPERVISOR
8. THE DEPTH OF CONCRETE HAUNCH BELOW THE TOP OF KERB WILL BE DETERMINED BY THE MINIMUM CONSTRUCTION THICKNESS OF THE ADJACENT SURFACING.

TRANSITION KERB NOTES

1. OTHER TRANSITION COMBINATIONS SHALL BE MANUFACTURED TO THE DIMENSIONS SHOWN ABOVE. LENGTH X VARIES TO MATCH ADJACENT KERB WIDTHS
2. ALL TRANSITION KERBS ARE TO HAVE A CONCRETE BEDDING AND BACKING.
3. TRANSITION KERB WIDTH AND MATERIAL TO BE CONFIRMED ON SITE TO MATCH ADJACENT KERB TYPES.

KEY

- Fill area to match adjacent materials
- FW Footway level
- CW Carriageway level

2	For Construction	AC	SJR	08.01.18
1	For Comment	AC	SJR	04.01.18
Rev	Revision details	Chkd	Appd	Date

Drawn: ANAC	Preliminary	
Design: MR	For comment	
Chkd: AC	For tender	
Appd: SJR	For construction	✓
Date: 04.01.18	As constructed	
	Other	



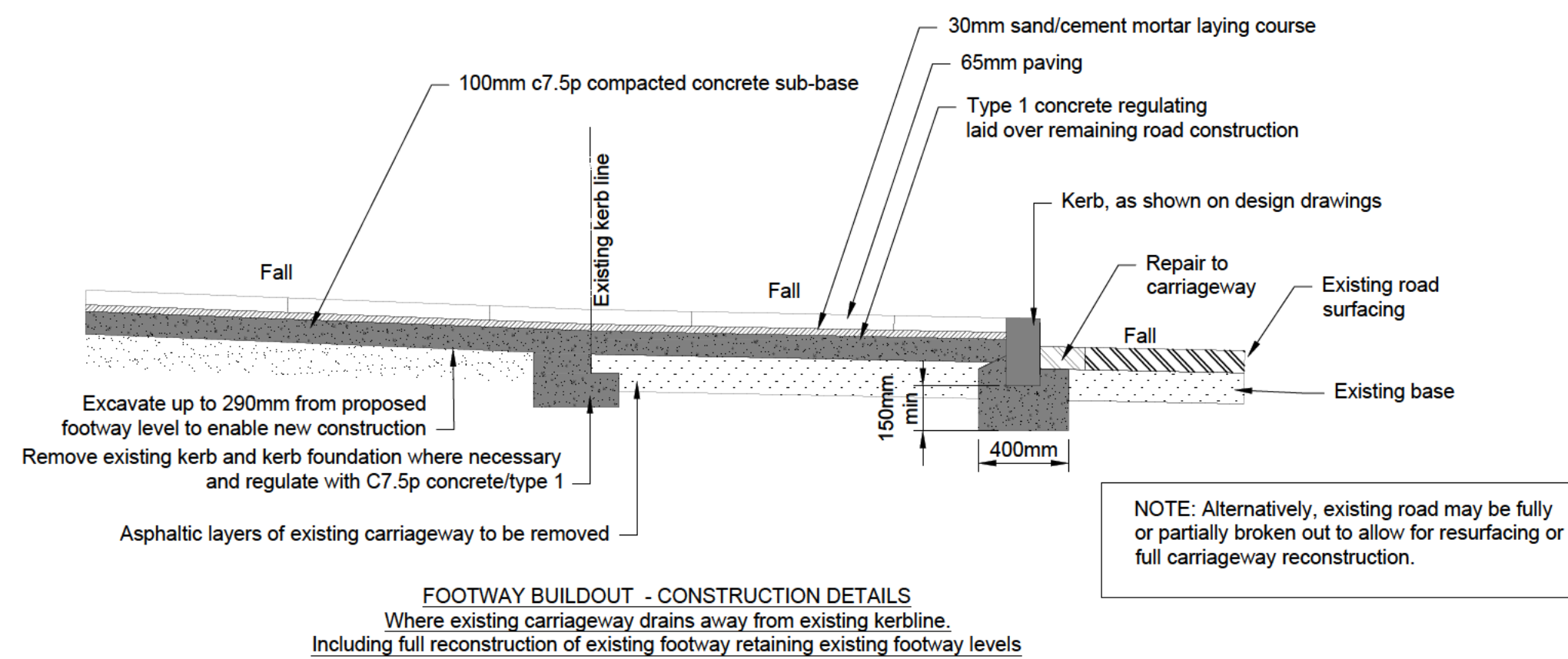
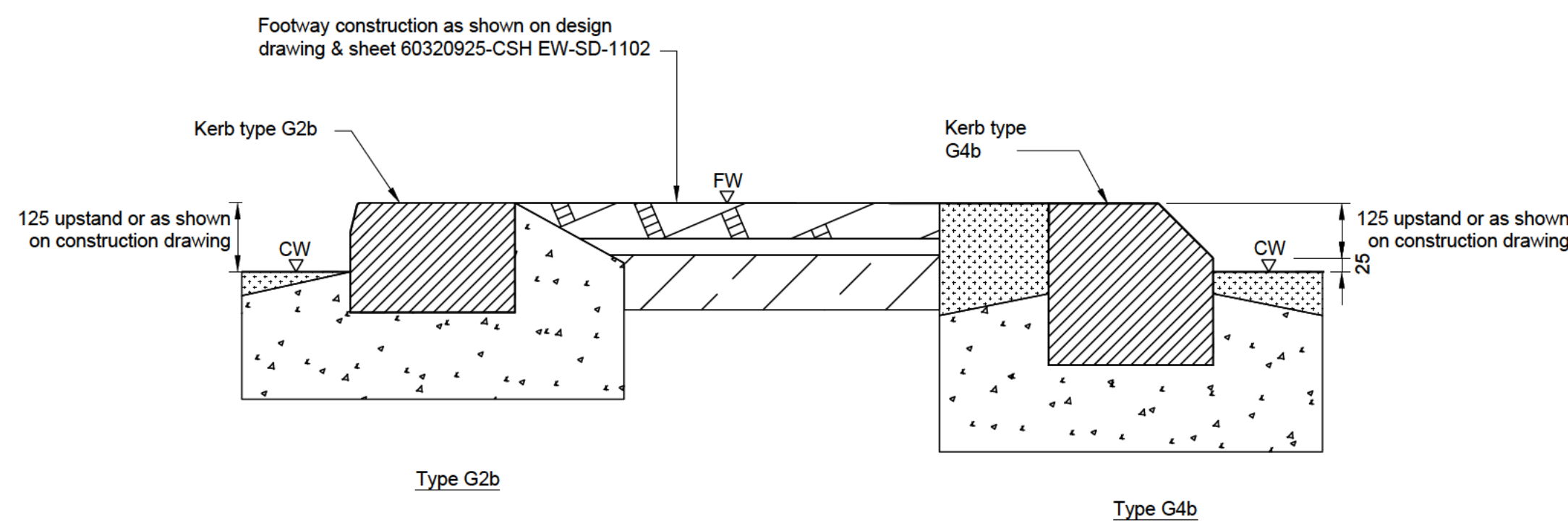
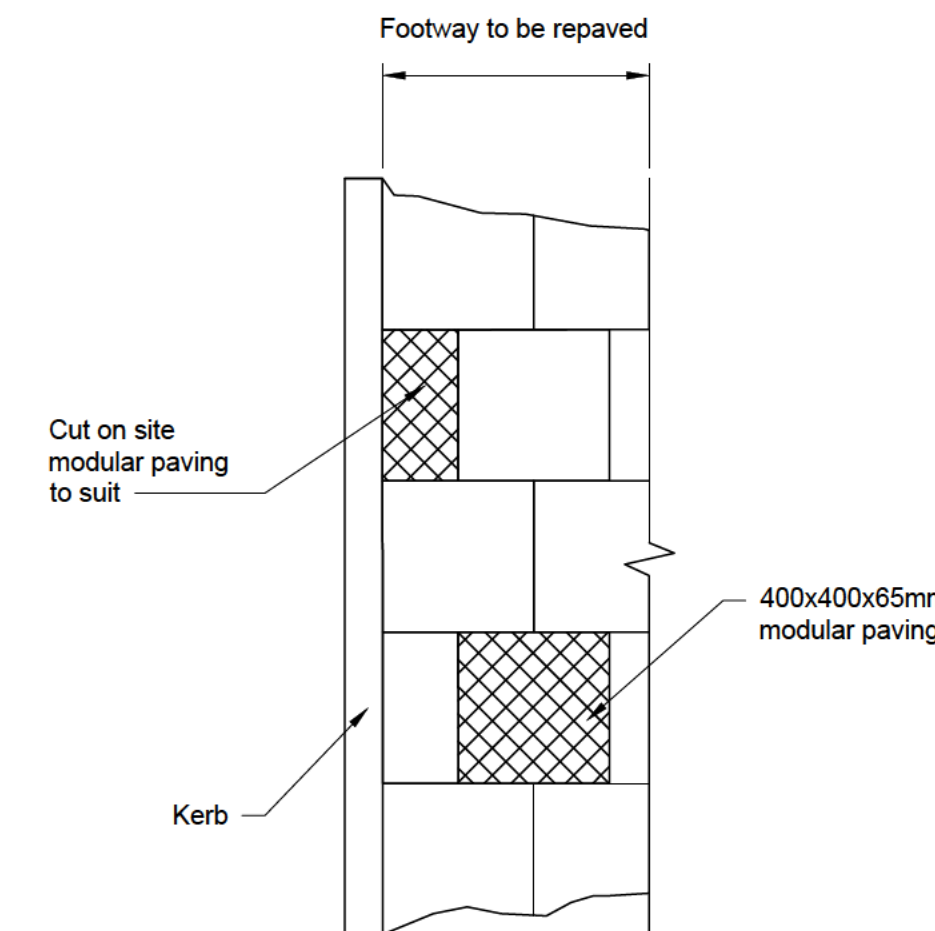
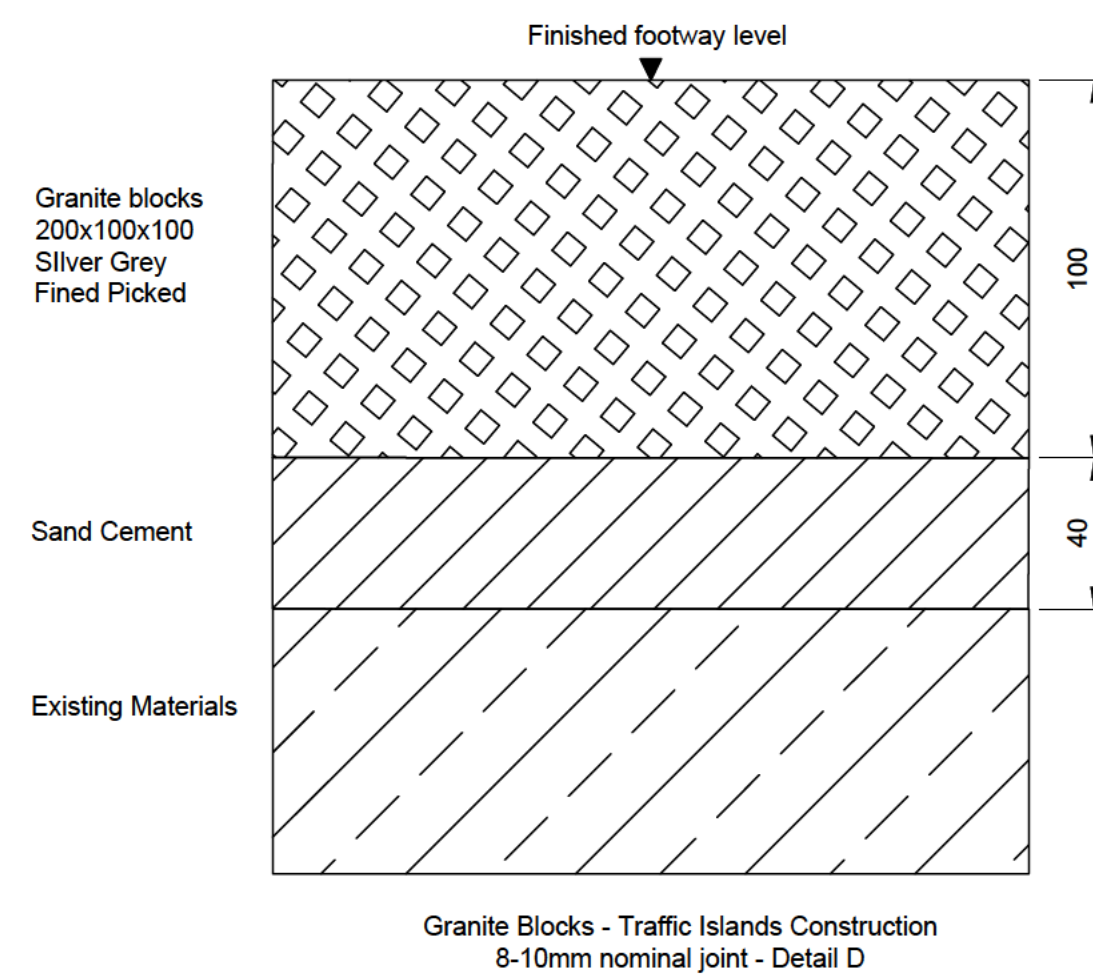
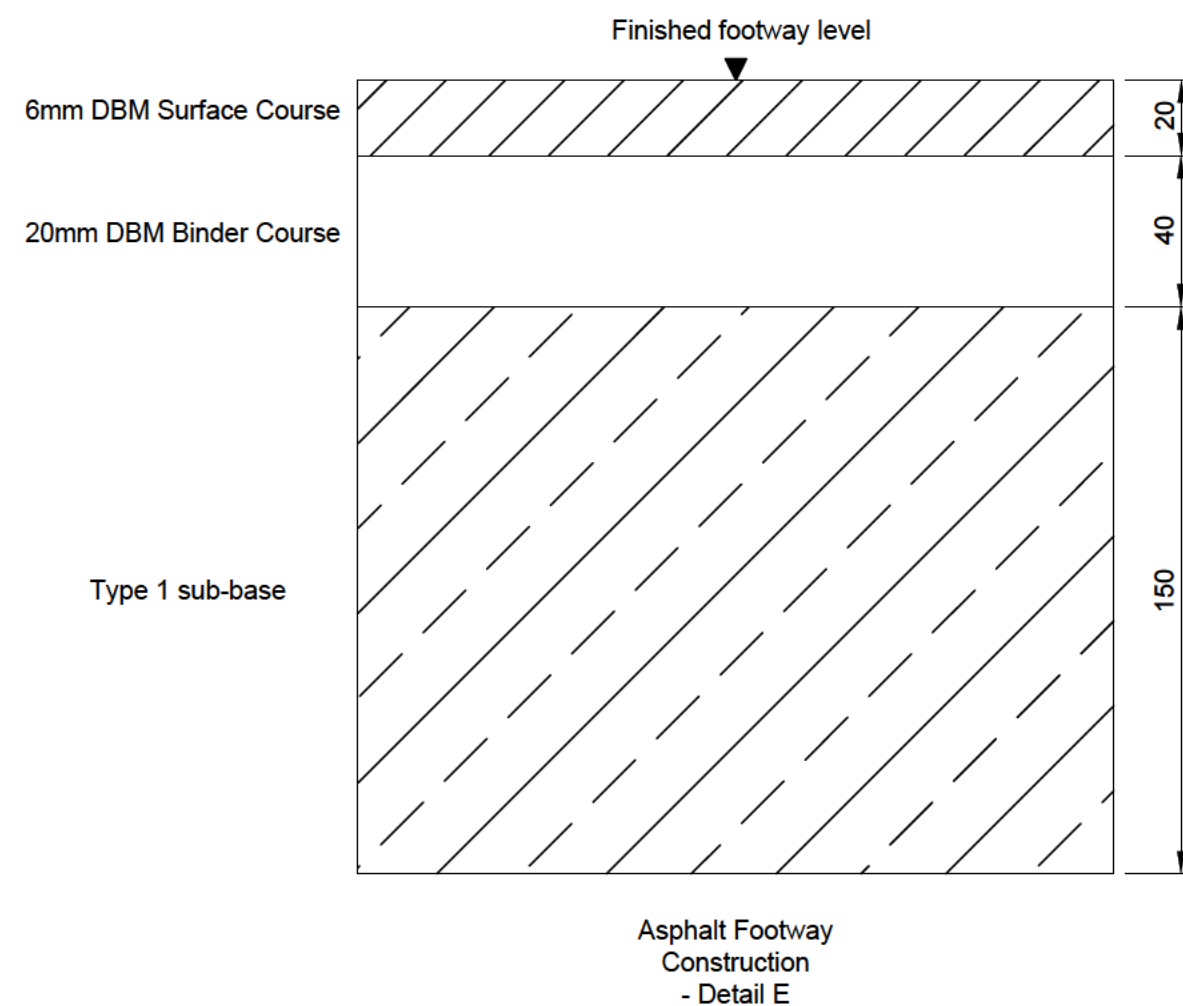
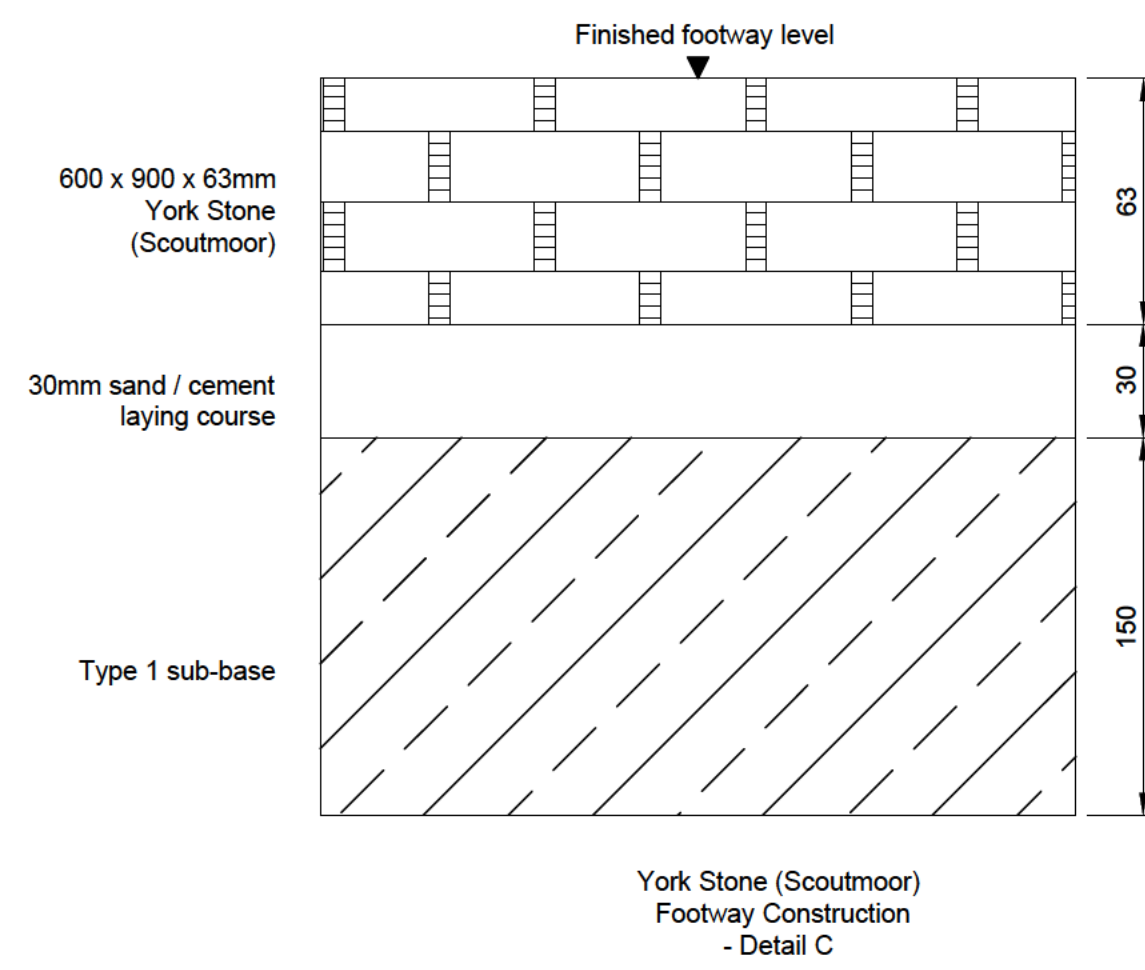
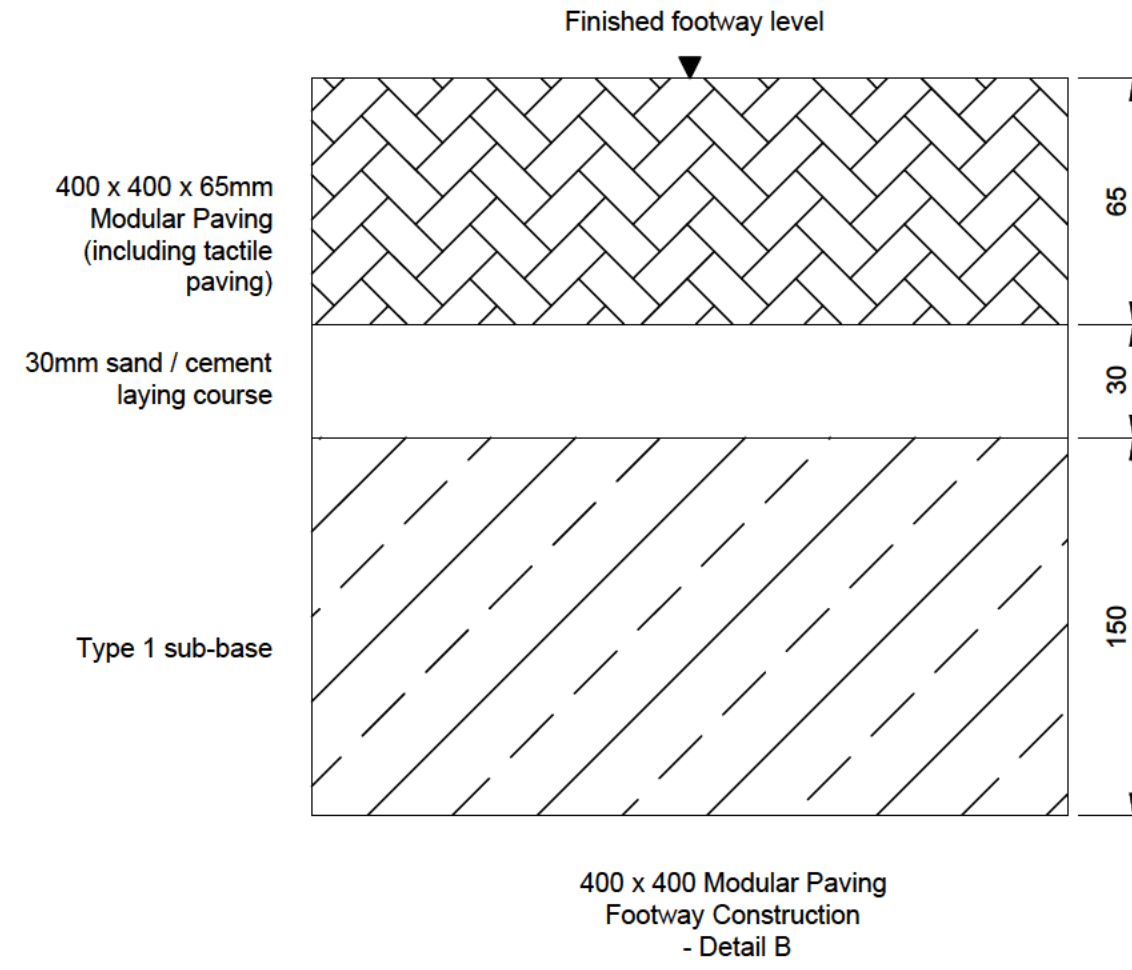
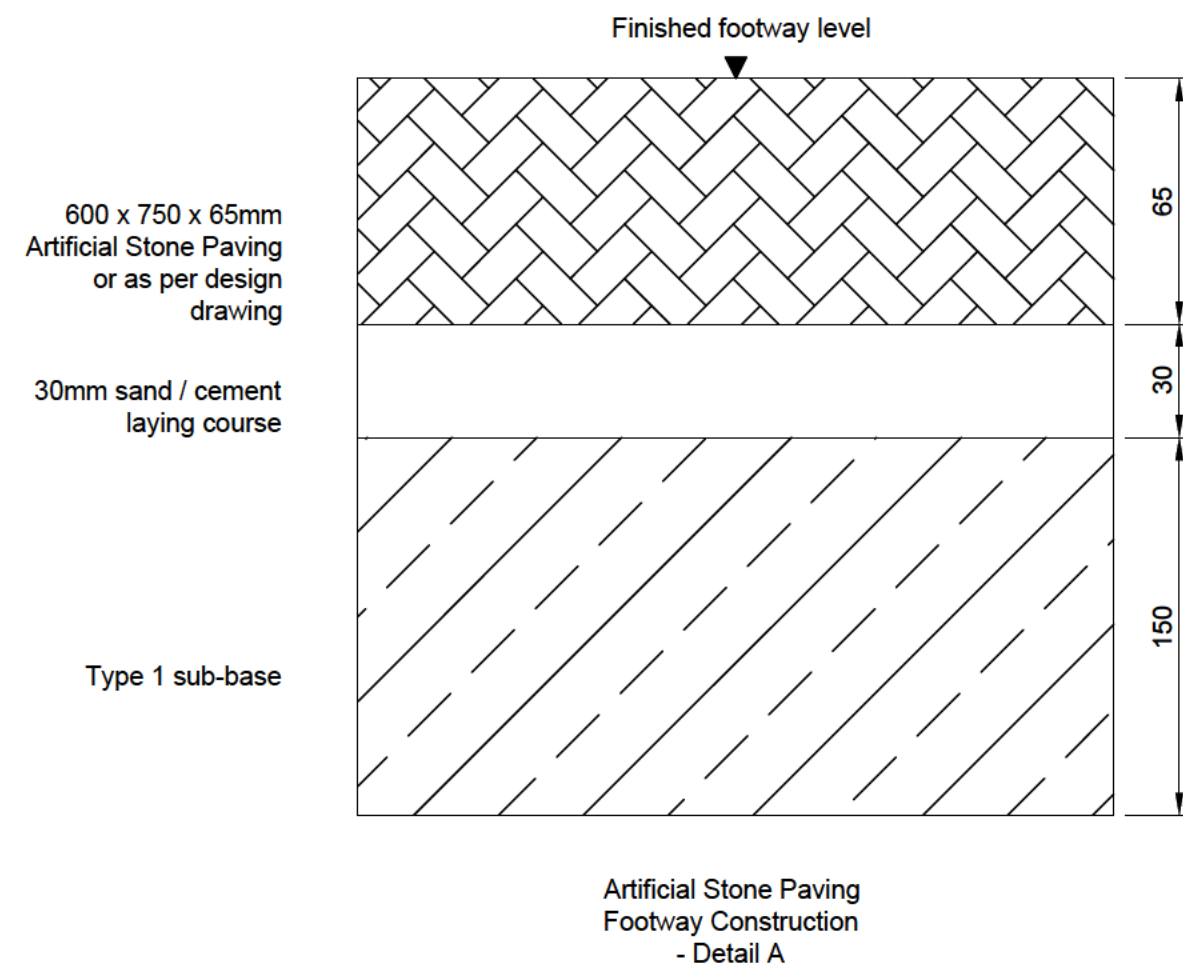
Project Name
Cycle Superhighways East - West
Construction Packages 12

Drawing Title
Transportation
STANDARD DETAILS
1100 SERIES

Original Drawing Size : A1	Dimensions : mm
Scale : N.T.S	Copyright © ConwayAecom

Drawing No 60320925-F001-SD-1101	Rev 2
-------------------------------------	----------

FOR CONSTRUCTION



GENERAL NOTES

1. THIS DRAWING TO BE READ IN CONJUNCTION WITH ALL THE RELEVANT AECOM DRAWINGS AND SPECIFICATIONS
2. DO NOT SCALE FROM THIS DRAWING. USE FIGURED DIMENSIONS ONLY. ALL DIMENSIONS ARE IN MILLIMETERS UNLESS OTHERWISE STATED.
3. REFER TO THE CONSTRUCTION DRAWINGS FOR ALL SETTING OUT DETAILS AND FINISHED SURFACE LEVELS. ALL PAVEMENT AREAS AND TYPES TO BE CONFIRMED WITH THE SUPERVISOR PRIOR TO CONSTRUCTION.

2	For Construction	AC	SJR	08.01.18
1	For Comment	AC	SJR	04.01.18
Rev	Revision details	Chkd	Appd	Date

Drawn:	ANAC	Preliminary	
Design:	MR	For comment	
Chkd:	AC	For tender	
Appd:	SJR	For construction	✓
Date:	04.01.18	As constructed	
		Other	



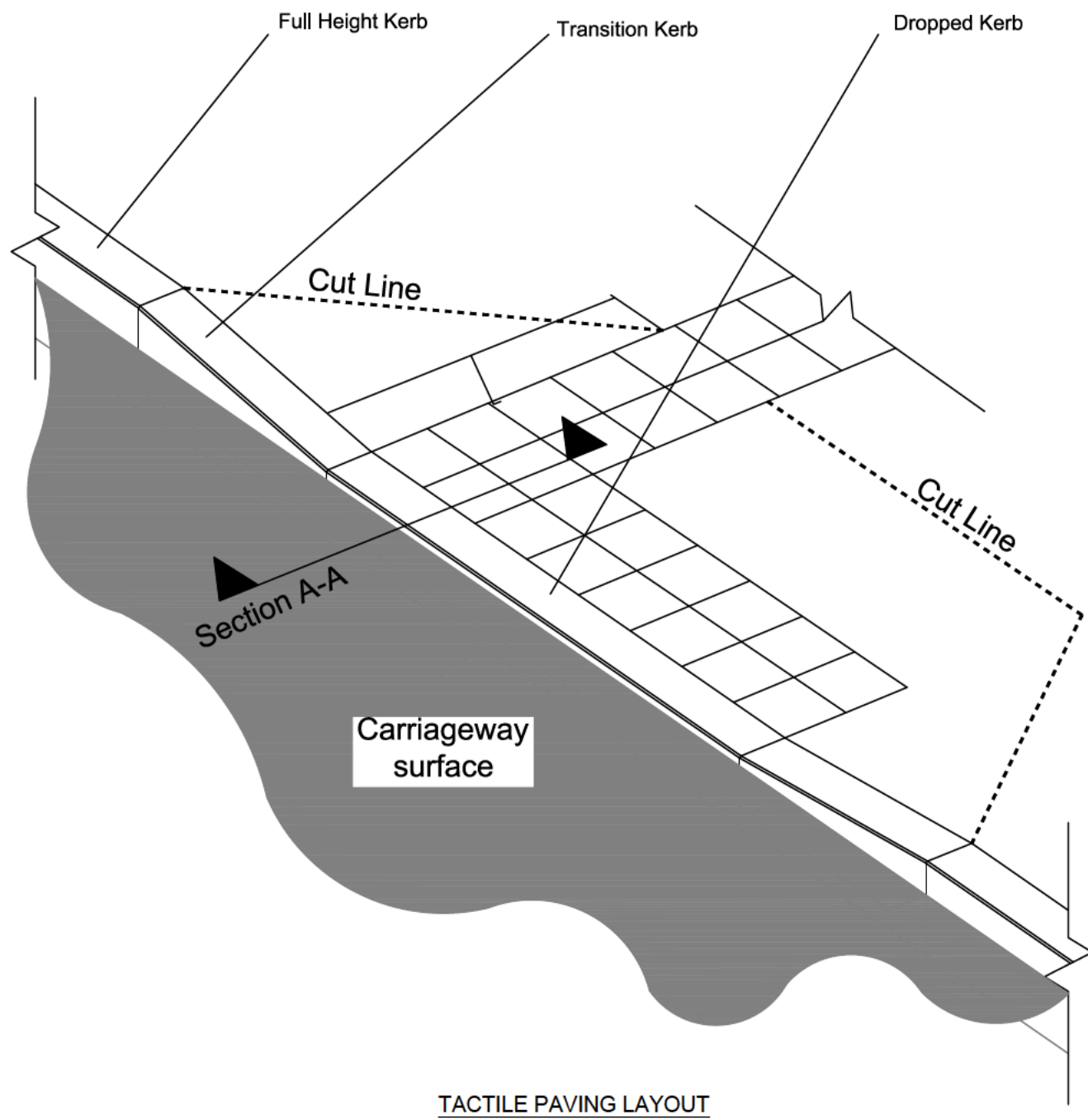
Project Name
Cycle Superhighways East - West
Construction Packages 12

Drawing Title
Transportation
STANDARD DETAILS
1100 SERIES

Original Drawing Size :	A1	Dimensions :	mm
Scale :	N.T.S	Copyright ©	ConwayAecom

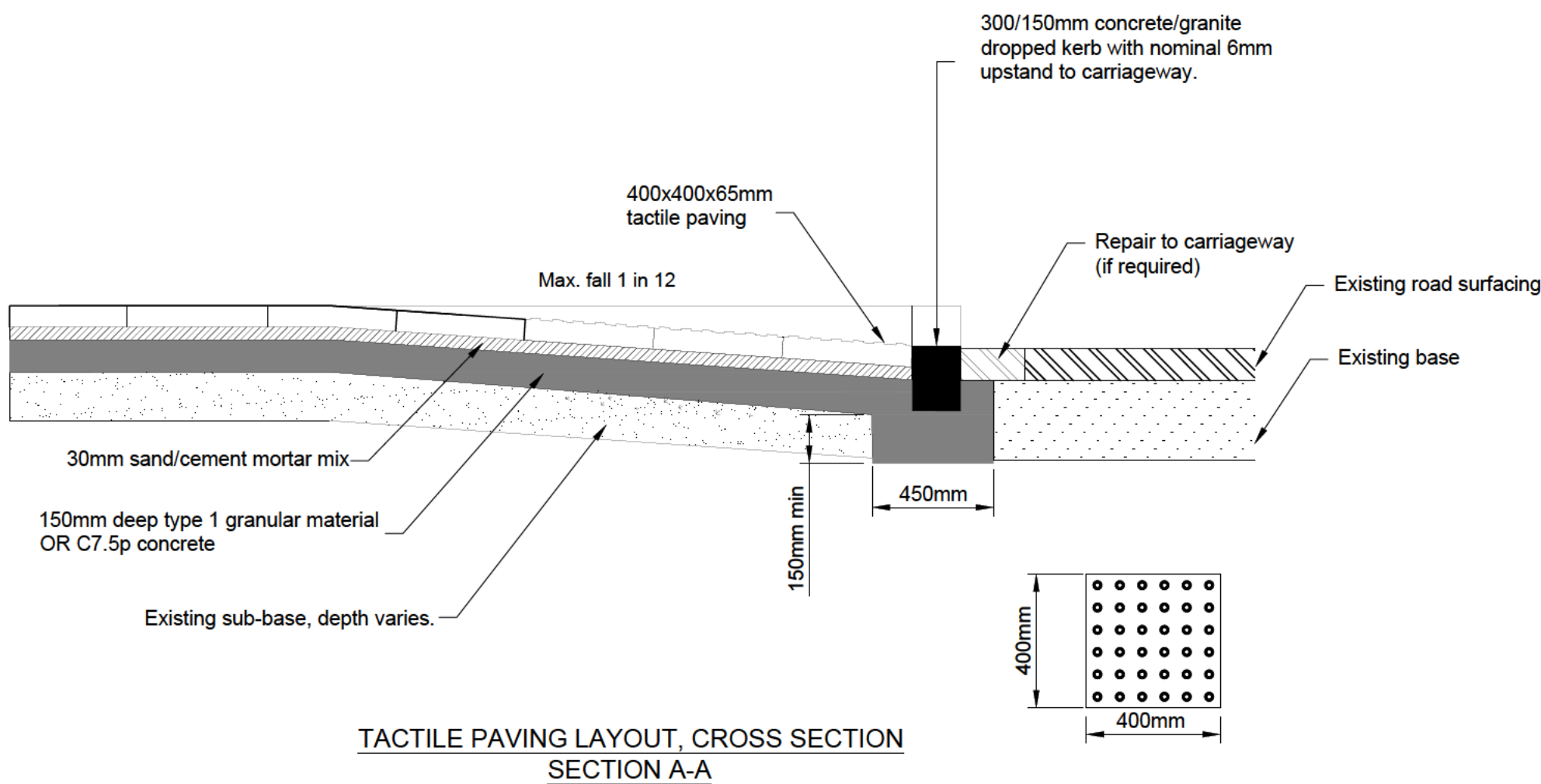
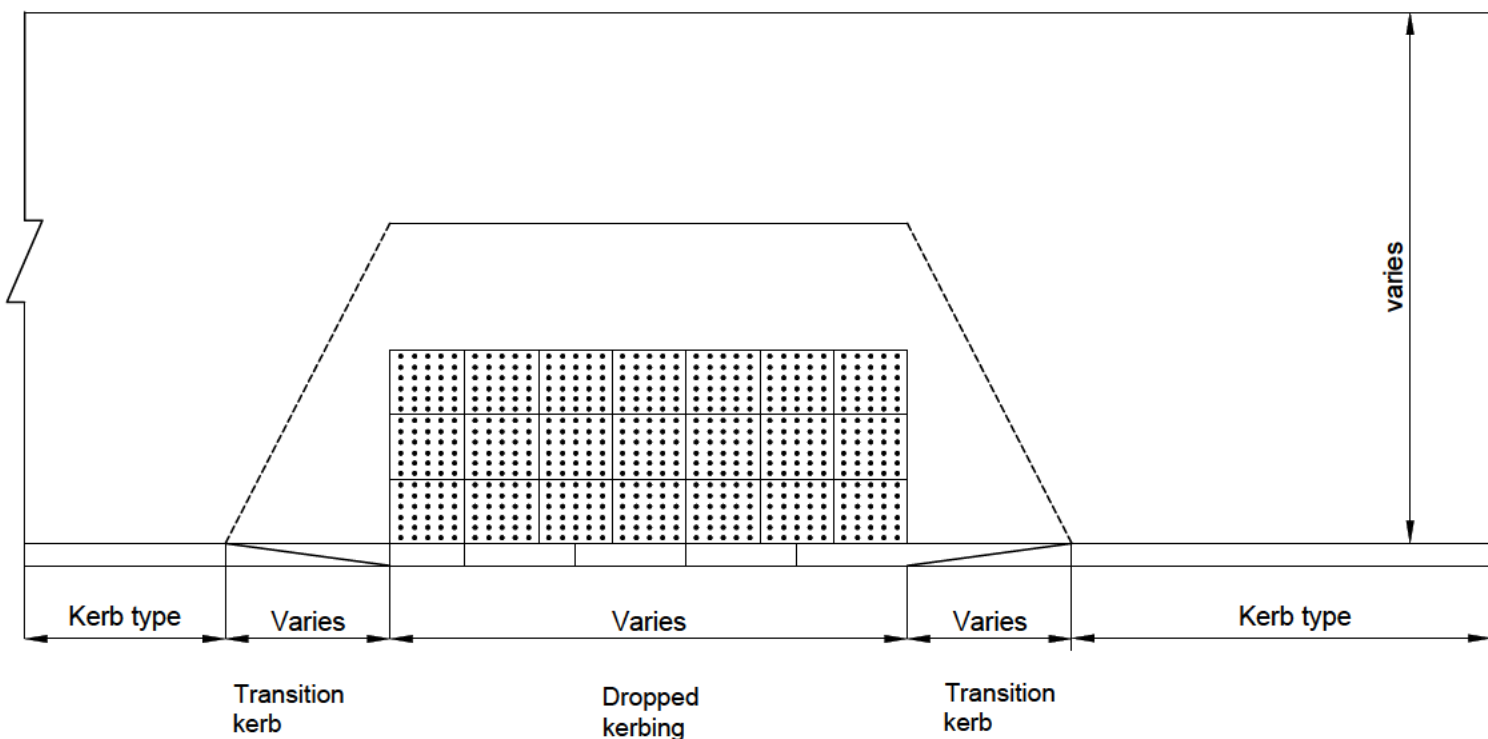
Drawing No	Rev
60320925-F001-SD-1102	2

FOR CONSTRUCTION

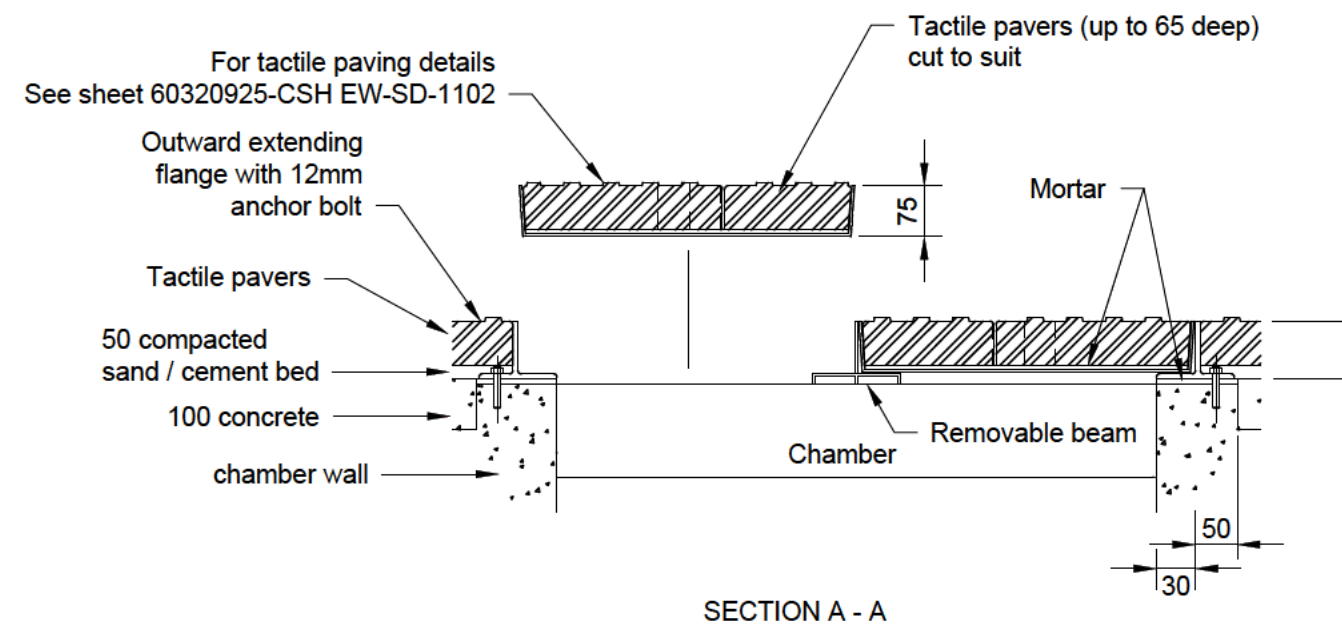
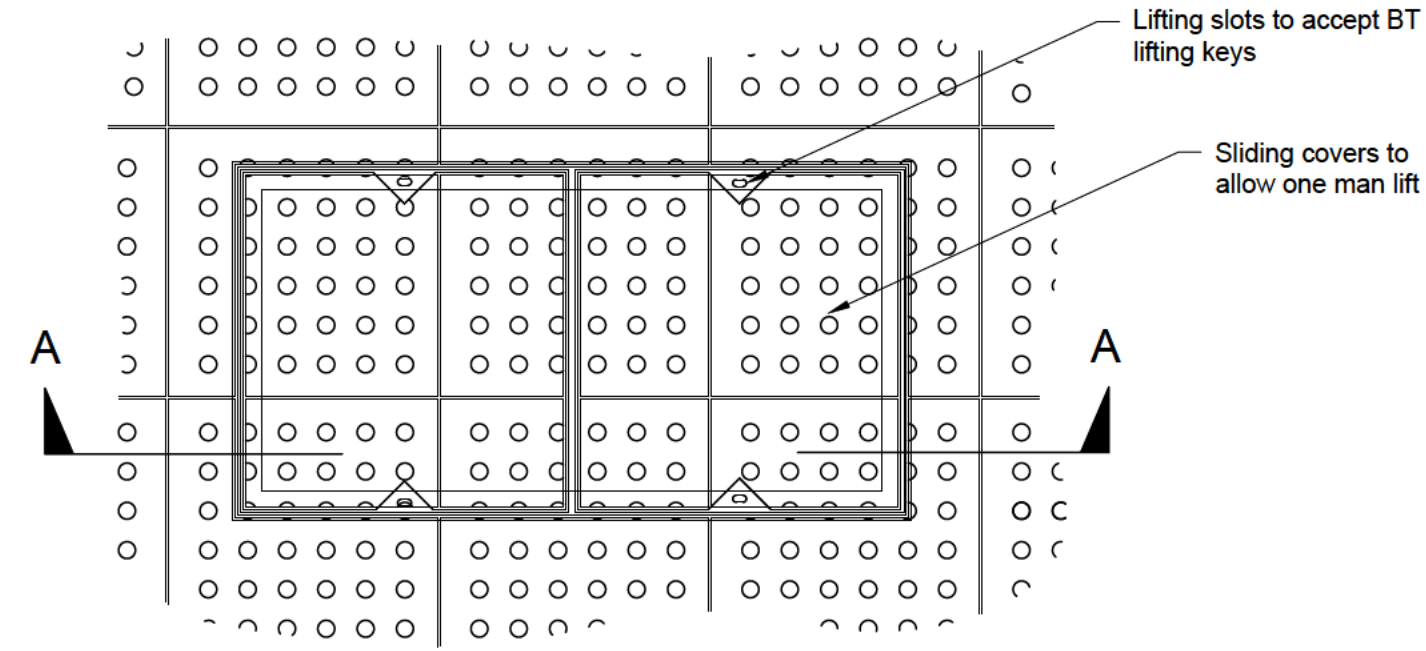


NOTES:

1. ALL PAVING TO BE LAID ON A 150MM THICK TYPE C7.5P OR TYPE 1 CONCRETE SUB BASE EXTENDING 1000MM FROM BACK OF KERB UNLESS OTHERWISE SPECIFIED. THE REMAINING AREA OF FOOTWAY TO BE LAID ON 100MM THICK TYPE C7.5P CONCRETE SUB BASE UNLESS OTHERWISE STATED. ALL CONCRETE FLAGS AND TACTILE PAVING TO BE BEDDED ON A 30MM SAND/CEMENT MORTAR MIX, BUTT JOINTED, WITH DRY SAND BRUSHED INTO JOINTS. THE RESIDENT ENGINEER SHOULD BE ADVISED WHERE THE PREFERRED DEPTH OF CONSTRUCTION CANNOT BE ACHIEVED ON SITE.
2. CONCRETE FLAGS TO BE LAID WITH COURSES SET AT 90° TO KERB AND A MINIMUM OVERLAP BOND OF 150MM.
3. THE BONDING OF PAVING TO BE CUT AROUND UTILITY SERVICE COVERS UNLESS DIRECTED BY THE RESIDENT ENGINEER.
4. CONCRETE FLAGS SHOULD NOT BE CUT SO THAT A WIDTH LESS THAN 300MM REMAINS. PREVIOUS COURSES SHOULD BE CUT TO DISTRIBUTE EVENLY OVER WIDTH.
5. EXISTING UTILITY SERVICE COVERS IN PAVED AREAS TO BE REPLACED WITH RECESSED COVERS AND INFILLED WITH MATCHING PAVING. COVERS TO BE ADJUSTED TO SUIT ON SITE AS DIRECTED BY THE RESIDENT ENGINEER. (REF INSET A)
6. LATERAL CLEARANCE TO ALL STREET FURNITURE TO BE 450MM MINIMUM FROM FACE OF KERB.
7. ALL WORK TO BE CARRIED OUT IN COMPLIANCE WITH THE REQUIREMENTS OF THE MANUAL HANDLING OPERATIONS REGULATIONS 1992 (AS AMENDED IN 2002).

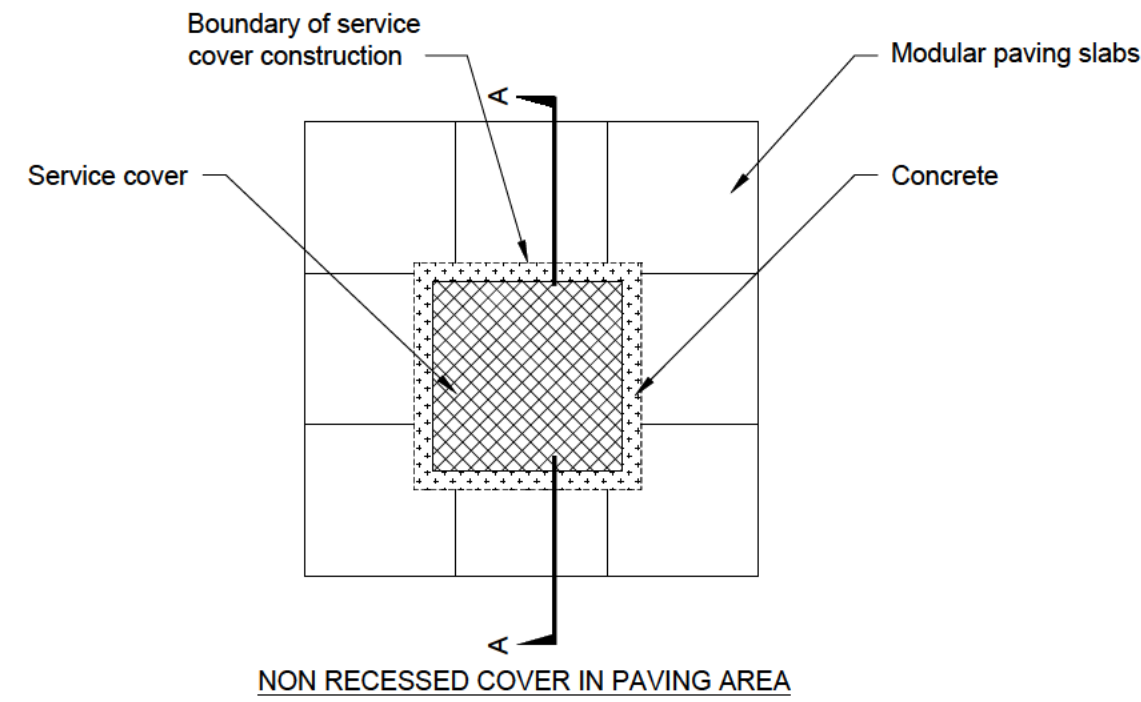
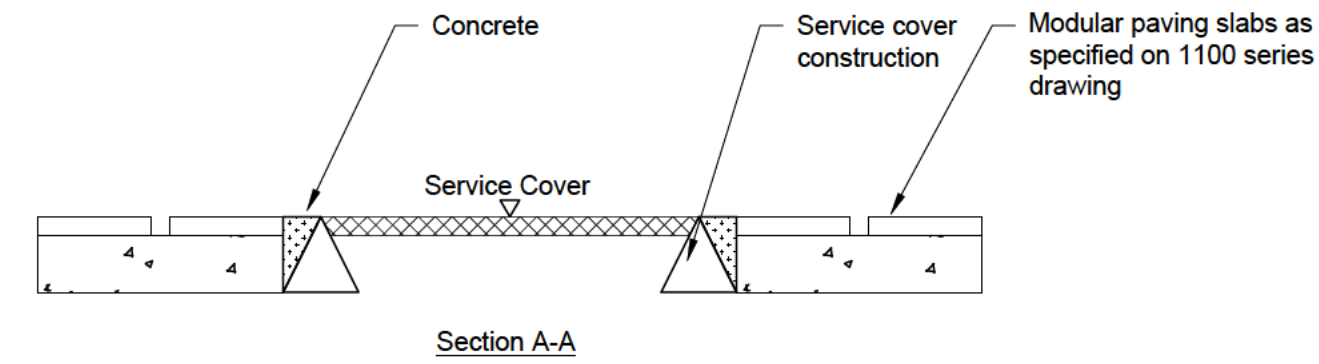


INSET A



TYPICAL CLEAR OPENING CHAMBER SIZE	NUMBER OF COVERS	INDIVIDUAL COVER SIZE
725 x 225	1	785 x 315
915 x 445	2	485 x 505
610 x 610	2	333 x 670
1310 x 610	3	454 x 670
1690 x 710	5	347 x 770
2285 x 710	6	388 x 770

The number of covers on other sized chambers to be compatible with the above table to allow for one man lift of the covers.



GENERAL NOTES

1. THIS DRAWING TO BE READ IN CONJUNCTION WITH ALL THE RELEVANT AECOM DRAWINGS AND SPECIFICATIONS
2. DO NOT SCALE FROM THIS DRAWING. USE FIGURED DIMENSIONS ONLY. ALL DIMENSIONS ARE IN MILLIMETERS UNLESS OTHERWISE STATED.
3. REFER TO THE CONSTRUCTION DRAWINGS FOR ALL SETTING OUT DETAILS AND FINISHED SURFACE LEVELS. ALL PAVEMENT AREAS AND TYPES TO BE CONFIRMED WITH THE SUPERVISOR PRIOR TO CONSTRUCTION.

RECESSED COVER NOTES:

1. ALL FRAMES AND COVERS TO BE MIN. 4MM THICK STRUCTURAL STEEL PLATE TO BS 4360
2. ALL FRAMES AND COVERS TO BE HOT DIPPED GALVANISED AFTER MANUFACTURE TO BS729:1971.
3. AUTHORITY COMPANY SHALL BE ETCHED ON THE COVERS.
4. AFTER BRUSHING IN OF SAND, ALL COVERS SHALL BE LIFTED, AND SAND BETWEEN THE COVERS AND FRAME REMOVED TO ENSURE FUTURE EASE OF ACCESS. THE COVERS SHALL THEN BE RE-FITTED.
5. FRAMES TO BE BEDDED ON BT CHAMBERS WITH RESIN MORTAR BT REF. 1888. OTHER CHAMBERS TO BE ON 10-20 CLASS 1 MORTAR BED.
6. SIX SETS OF LIFTING KEYS TO BE PROVIDED TO ENGINEER.
7. EXISTING CHAMBERS TO BE SURVEYED BY THE CONTRACTOR TO DETERMINE APPROPRIATE COVER TO BE SUPPLIED AT EACH LOCATION.

2	For Construction	AC	SJR	08.01.18
1	For Comment	AC	SJR	04.01.18
Rev	Revision details	Chkd	Appd	Date

Drawn: ANAC	Preliminary
Design: MR	For comment
Chkd: AC	For tender
Appd: SJR	For construction
Date: 04.01.18	As constructed
	Other



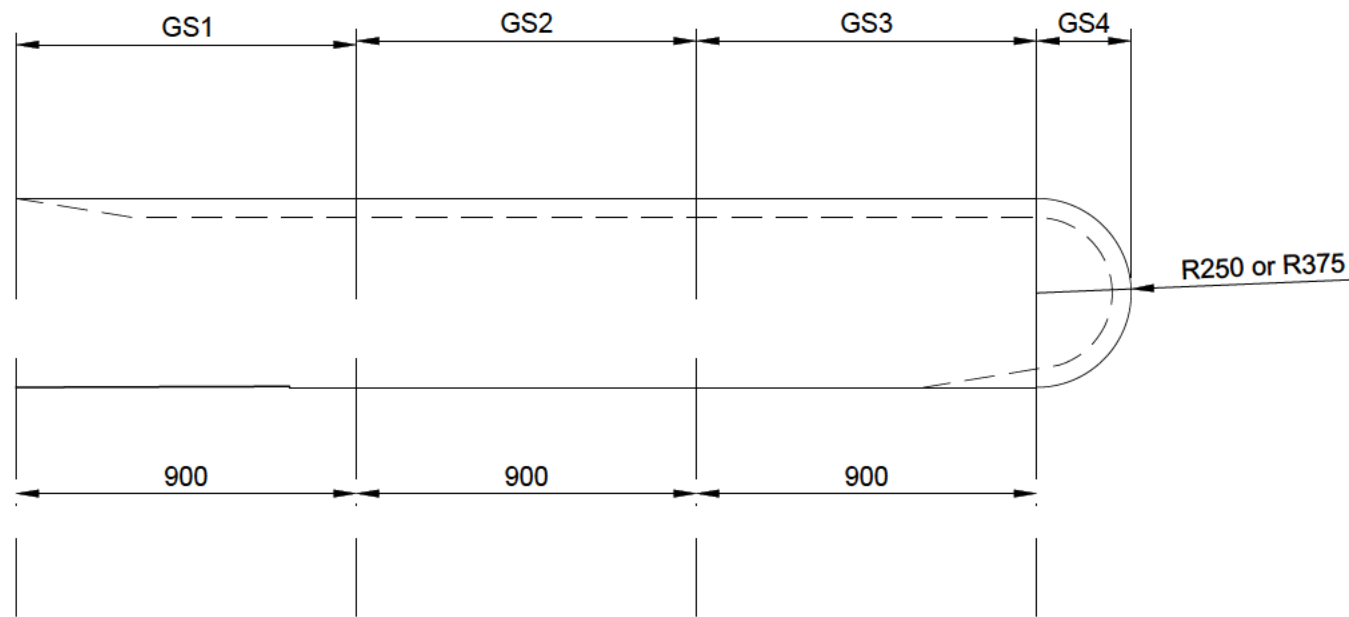
Project Name
Cycle Superhighways East - West
Construction Packages 12

Drawing Title
Transportation
STANDARD DETAILS
1100 SERIES

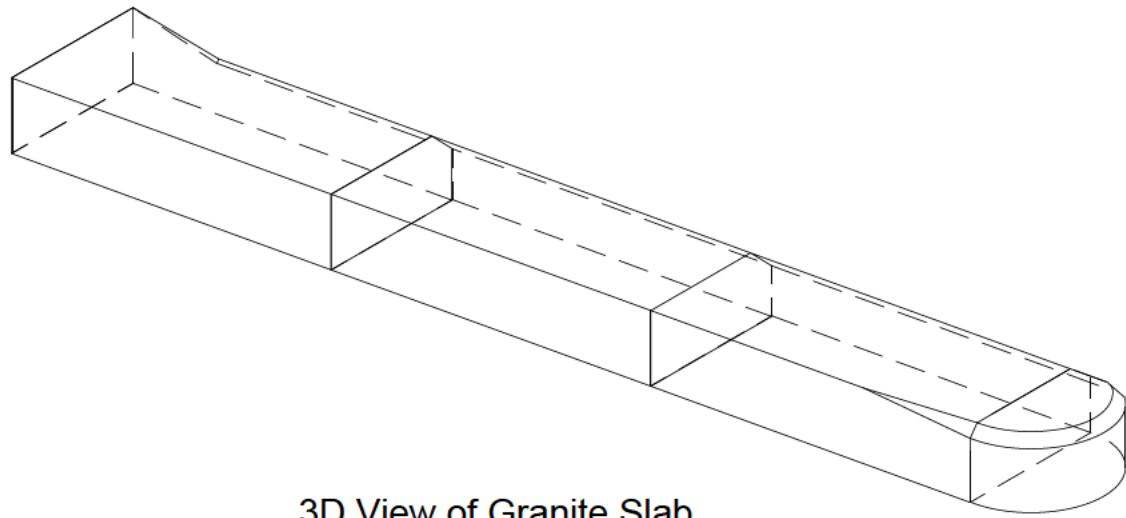
Original Drawing Size : A1	Dimensions : mm
Scale : N.T.S	Copyright © ConwayAecom

Drawing No 60320925-F001-SD-1103	Rev 2
-------------------------------------	----------

FOR CONSTRUCTION



Plan View of Granite Slab
(50x50 splay)



3D View of Granite Slab
(50x50 splay)

Segment of slab	Drawing Reference
<p>Isometric view of Segment GS1 showing a 45° splay edge, a length of 900, and a width of 500 or 700. The side elevation shows a height of 300 and a width of 900. The section view shows a cross-section with a width of 500 or 700, a height of 300, and a 50x50 splay.</p>	Section GS1
<p>Isometric view of Segment GS2 showing a 45° splay edge, a length of 900, and a width of 500 or 700. The side elevation shows a height of 300 and a width of 900. The section view shows a cross-section with a width of 500 or 700, a height of 300, and a 50x50 splay.</p>	Section GS2
<p>Isometric view of Segment GS3 showing a 45° splay edge, a length of 900, and a width of 500 or 700. The side elevation shows a height of 300 and a width of 900. The section view shows a cross-section with a width of 500 or 700, a height of 300, and a 50x50 splay.</p>	Section GS3
<p>Isometric view of Segment GS4 showing a 45° splay edge, a length of 900, and a width of 500 or 700. The side elevation shows a height of 300 and a width of 900. The plan view shows a cross-section with a width of 250 and a height of 300.</p>	Section GS4

Granite Segregation Slab

GENERAL NOTES

1. THIS DRAWING TO BE READ IN CONJUNCTION WITH ALL THE RELEVANT AECOM DRAWINGS AND SPECIFICATIONS
2. DO NOT SCALE FROM THIS DRAWING. USE FIGURED DIMENSIONS ONLY. ALL DIMENSIONS ARE IN MILLIMETERS UNLESS OTHERWISE STATED.
3. REFER TO THE CONSTRUCTION DRAWINGS FOR ALL SETTING OUT DETAILS AND FINISHED SURFACE LEVELS. ALL PAVEMENT AREAS AND TYPES TO BE CONFIRMED WITH THE SUPERVISOR PRIOR TO CONSTRUCTION.

2	For Construction	AC	SJR	08.01.18
1	For Comment	AC	SJR	04.01.18
Rev	Revision details	Chkd	Appd	Date

Drawn: ANAC	Preliminary	
Design: MR	For comment	
Chkd: AC	For tender	
Appd: SJR	For construction	✓
Date: 04.01.18	As constructed	
	Other	



Project Name
Cycle Superhighways East - West
Construction Packages 12

Drawing Title
Transportation
STANDARD DETAILS
1100 SERIES

Original Drawing Size : A1	Dimensions : mm
Scale : N.T.S	Copyright © ConwayAecom

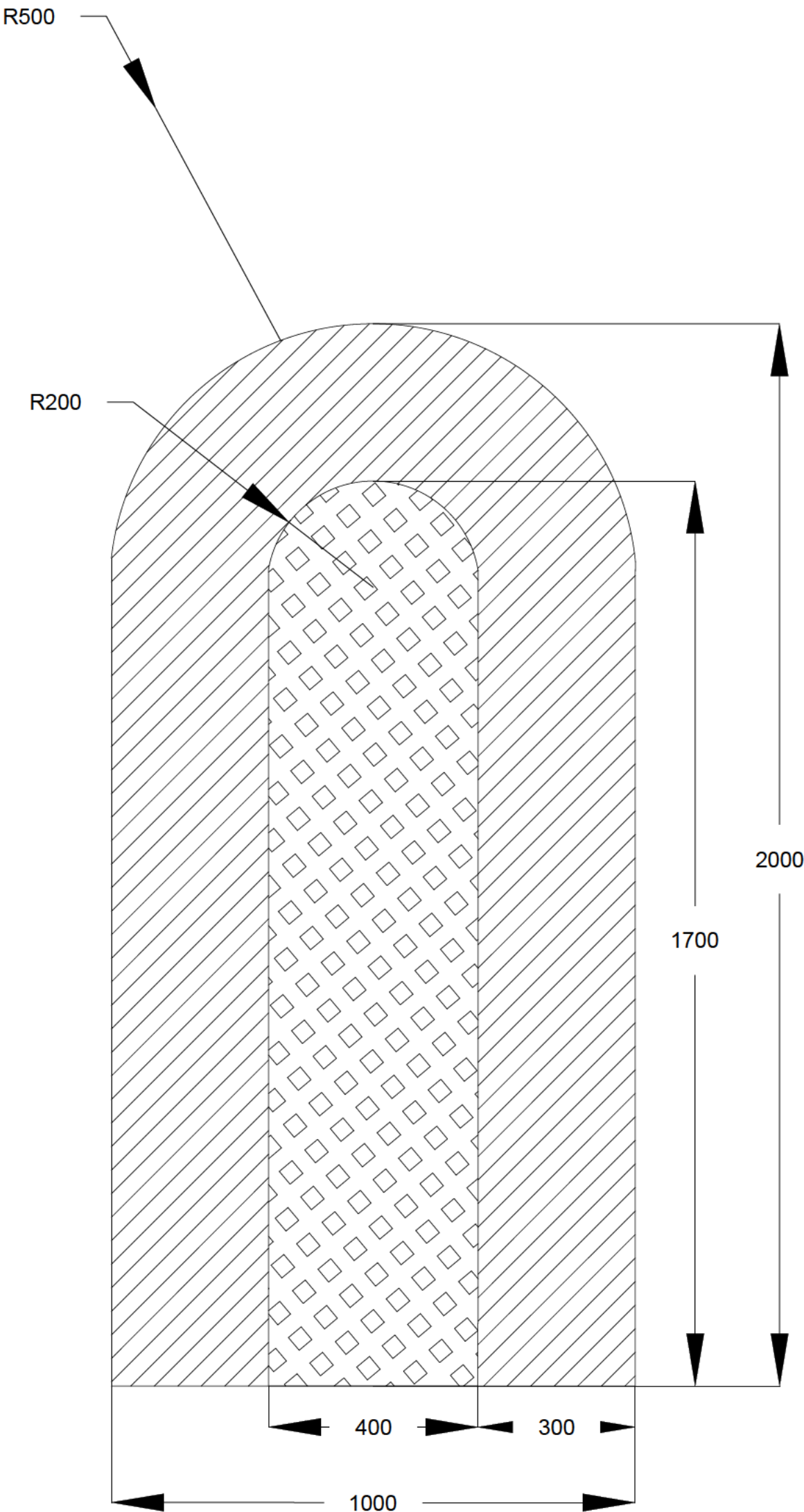
Drawing No 60320925-F001-SD-1104	Rev 2
-------------------------------------	----------

FOR CONSTRUCTION

DT1

STAND2000X1000
WITH 90 DEGREE CORNERS
SCALE 1:10

UPSTAND = 125mm
AREA = 1.921 SQM

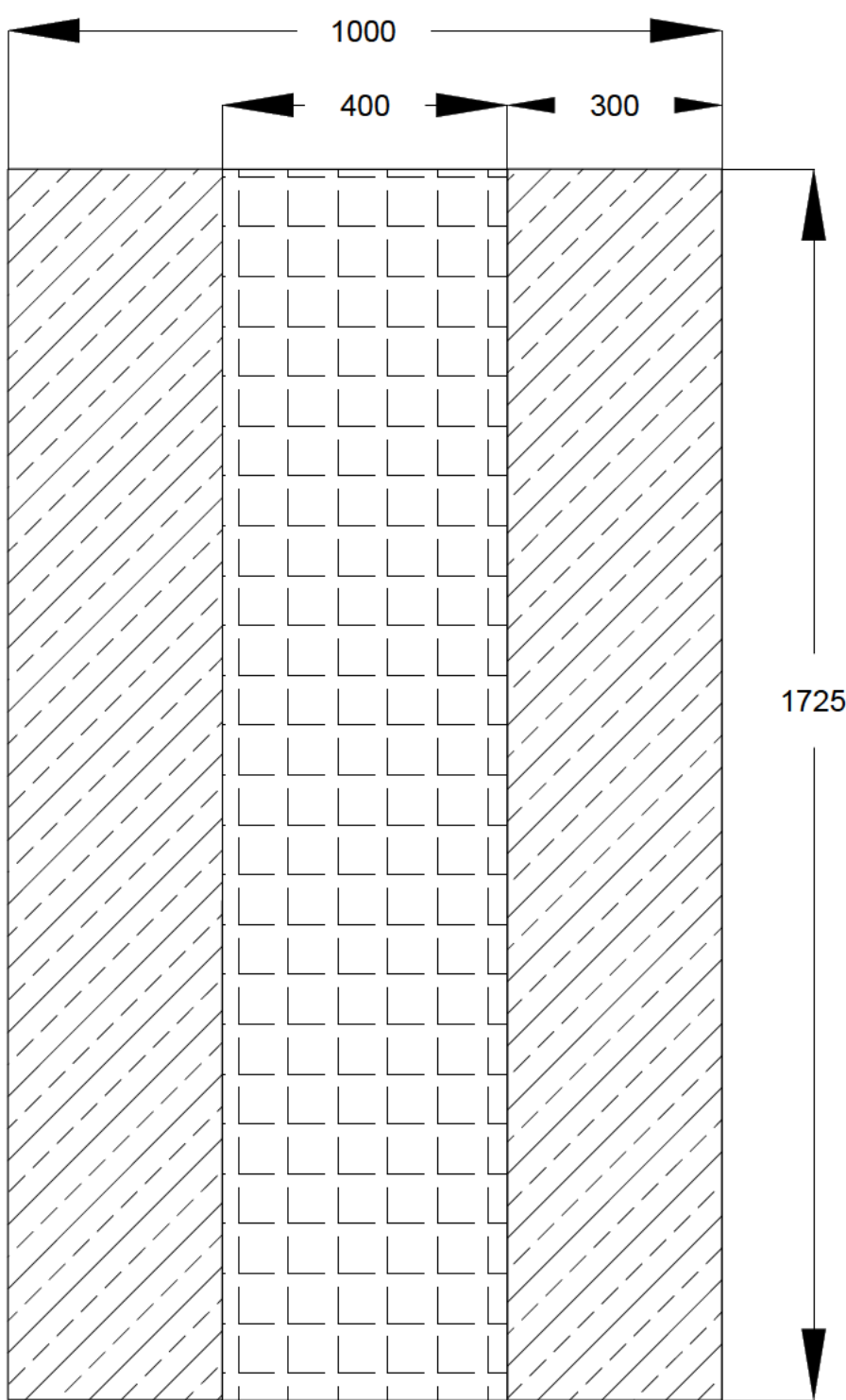


WITHOUT FURNITURE.....X1no

DT2

SQ1725X1000
BESPOKE SQUARE 1725X1000 DM
SCALE 1:10

UPSTAND = 75mm
AREA = 1.725 SQM



WITHOUT FURNITURE.....X4no

GENERAL NOTES

1. THIS DRAWING TO BE READ IN CONJUNCTION WITH ALL THE RELEVANT AECOM DRAWINGS AND SPECIFICATIONS DO NOT SCALE FROM THIS DRAWING. USE FIGURED DIMENSIONS ONLY. ALL DIMENSIONS ARE IN MILLIMETERS UNLESS OTHERWISE STATED.

2. REFER TO THE CONSTRUCTION DRAWINGS FOR ALL SETTING OUT DETAILS AND FINISHED SURFACE LEVELS. ALL PAVEMENT AREAS AND TYPES TO BE CONFIRMED WITH THE SUPERVISOR PRIOR TO CONSTRUCTION.

KEY

FINE PICKED SILVER GREY GRANITE KERB

GRANITE BLOCKS

FINE PICKED SILVER GREY GRANITE KERB 75mm

GRANITE BLOCKS 75mm

2	For Construction	AC	SJR	08.01.18
1	For Comment	AC	SJR	04.01.18
Rev	Revision details	Chkd	Appd	Date

Drawn: ANAC	Preliminary	
Design: MR	For comment	
Chkd: AC	For tender	
Appd: SJR	For construction	✓
Date: 04.01.18	As constructed	
	Other	

LONDON
HIGHWAYS
ALLIANCE

CONWAY
AECOM

Project Name

Cycle Superhighways East - West
Construction Packages 12

Drawing Title

Transportation
STANDARD DETAILS
1100 SERIES

Original Drawing Size : A1	Dimensions : mm
Scale : N.T.S	Copyright © ConwayAecom

Drawing No 60320925-F001-SD-1105	Rev 2
-------------------------------------	----------

FOR CONSTRUCTION

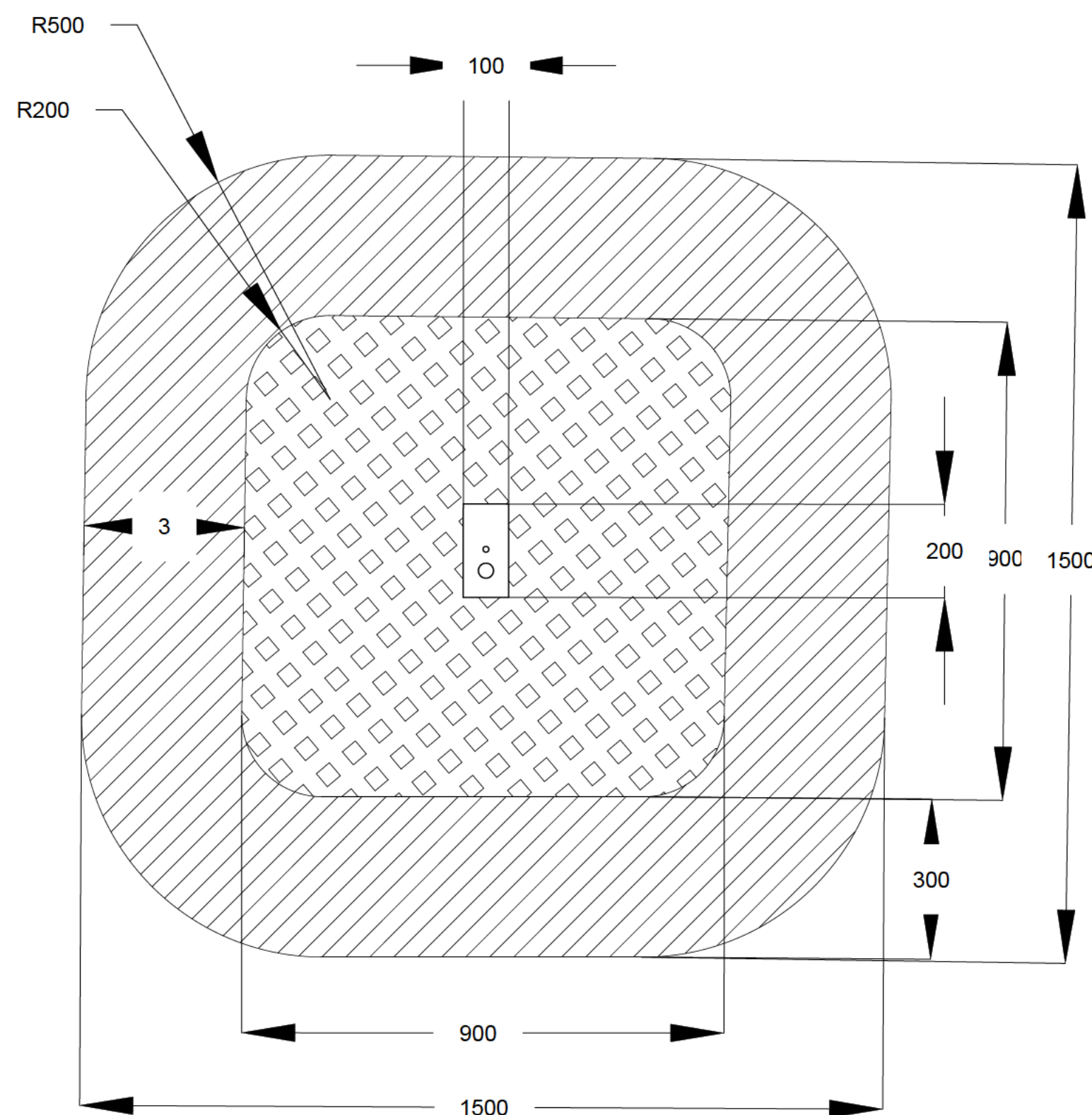
Diagram illustrating the dimensions of a rectangular panel. The total width is 1000. The central section, featuring a square grid pattern, has a width of 400. The side sections, filled with diagonal hatching, each have a width of 300. The height of the panel is 1500.

1500

Technical drawing of a composite shape. The shape consists of a central rectangular area with a width of 400 and a height of 1200, filled with a diamond pattern. This central area is flanked by two side regions, each with a width of 300, filled with diagonal hatching. The top of the shape is a semi-circle with a radius of R500. The total width of the shape is 1000, and the total height is 1500. The drawing includes dimension lines and arrows indicating the radii R500 and R200, and the dimensions 400, 300, 1200, and 1500.

1500

2



WITH NAL SOCKET.....X1no

DT4

STAND1500

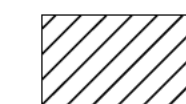
STANDARD 1500DM
WITH ROUND EDGES
SCALE 1:10

UPSTAND = 125mm
AREA = 2.079 SQM

GENERAL NOTES

1. THIS DRAWING TO BE READ IN CONJUNCTION WITH ALL THE RELEVANT AECOM DRAWINGS AND SPECIFICATIONS
2. DO NOT SCALE FROM THIS DRAWING. USE FIGURED DIMENSIONS ONLY. ALL DIMENSIONS ARE IN MILLIMETERS UNLESS OTHERWISE STATED.
3. REFER TO THE CONSTRUCTION DRAWINGS FOR ALL SETTING OUT DETAILS AND FINISHED SURFACE LEVELS. ALL PAVEMENT AREAS AND TYPES TO BE CONFIRMED WITH THE SUPERVISOR PRIOR TO CONSTRUCTION.

KEY



FINE PICKED SILVER GREY GRANITE KERB



GRANITE BLOCKS

2	For Construction	AC	SJR	08.01.18
1	For Comment	AC	SJR	04.01.18
Rev	Revision details	Chkd	Appd	Date

Drawn: ANAC	Preliminary	
Design: MR	For comment	
Chkd: AC	For tender	
Appd: SJR	For construction	✓
Date: 04.01.18	As constructed	
	Other	



Project Name	Cycle Superhighways East - West Construction Packages 12
--------------	---

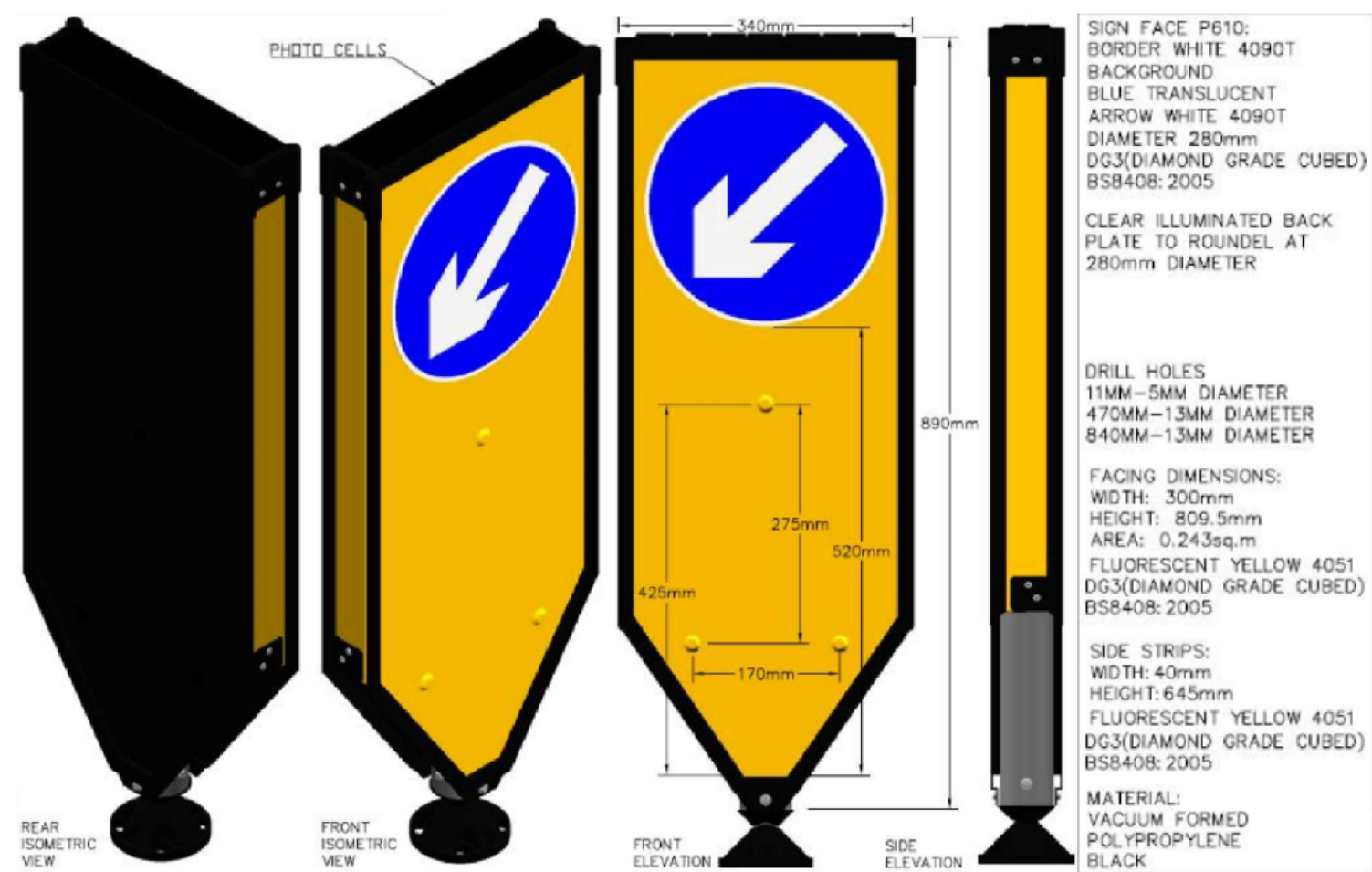
Drawing Title
Transportation
STANDARD DETAILS
1100 SERIES

Original Drawing Size : A1	Dimensions : mm
Scale : N.T.S	Copyright © ConwayAecom

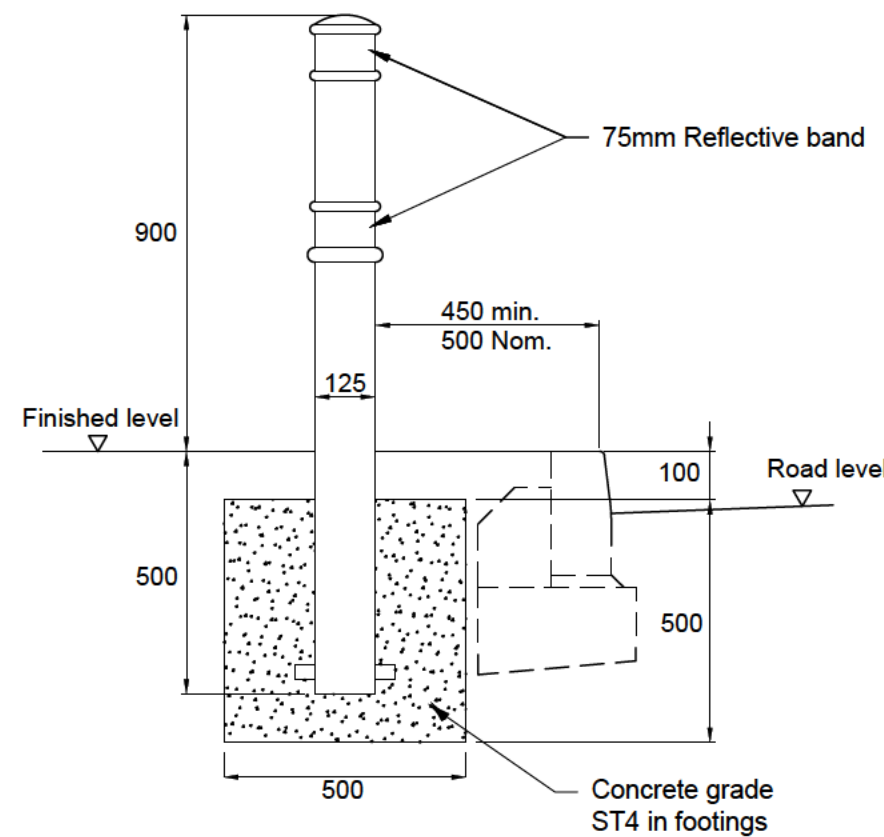
Drawing No
60320925-F001-SD-1107

2	3	4	5	6	7	8	9	10	11	12	13	14	15	16	17	18	19	20	21	22	23	24	25	26	27	28	29	30	31	32	33	34	35	36	37	38	39	40	41	42	43	44	45	46	47	48	49	50	51	52	53	54	55	56	57	58	59	60	61	62	63	64	65	66	67	68	69	70	71	72	73	74	75	76	77	78	79	80	81	82	83	84	85	86	87	88	89	90	91	92	93	94	95	96	97	98	99	100	101	102	103	104	105	106	107	108	109	110	111	112	113	114	115	116	117	118	119	120	121	122	123	124	125	126	127	128	129	130	131	132	133	134	135	136	137	138	139	140	141	142	143	144	145	146	147	148	149	150	151	152	153	154	155	156	157	158	159	160	161	162	163	164	165	166	167	168	169	170	171	172	173	174	175	176	177	178	179	180	181	182	183	184	185	186	187	188	189	190	191	192	193	194	195	196	197	198	199	200	201	202	203	204	205	206	207	208	209	210	211	212	213	214	215	216	217	218	219	220	221	222	223	224	225	226	227	228	229	230	231	232	233	234	235	236	237	238	239	240	241	242	243	244	245	246	247	248	249	250	251	252	253	254	255	256	257	258	259	260	261	262	263	264	265	266	267	268	269	270	271	272	273	274	275	276	277	278	279	280	281	282	283	284	285	286	287	288	289	290	291	292	293	294	295	296	297	298	299	300	301	302	303	304	305	306	307	308	309	310	311	312	313	314	315	316	317	318	319	320	321	322	323	324	325	326	327	328	329	330	331	332	333	334	335	336	337	338	339	340	341	342	343	344	345	346	347	348	349	350	351	352	353	354	355	356	357	358	359	360	361	362	363	364	365	366	367	368	369	370	371	372	373	374	375	376	377	378	379	380	381	382	383	384	385	386	387	388	389	390	391	392	393	394	395	396	397	398	399	400	401	402	403	404	405	406	407	408	409	410	411	412	413	414	415	416	417	418	419	420	421	422	423	424	425	426	427	428	429	430	431	432	433	434	435	436	437	438	439	440	441	442	443	444	445	446	447	448	449	450	451	452	453	454	455	456	457	458	459	460	461	462	463	464	465	466	467
---	---	---	---	---	---	---	---	----	----	----	----	----	----	----	----	----	----	----	----	----	----	----	----	----	----	----	----	----	----	----	----	----	----	----	----	----	----	----	----	----	----	----	----	----	----	----	----	----	----	----	----	----	----	----	----	----	----	----	----	----	----	----	----	----	----	----	----	----	----	----	----	----	----	----	----	----	----	----	----	----	----	----	----	----	----	----	----	----	----	----	----	----	----	----	----	----	----	-----	-----	-----	-----	-----	-----	-----	-----	-----	-----	-----	-----	-----	-----	-----	-----	-----	-----	-----	-----	-----	-----	-----	-----	-----	-----	-----	-----	-----	-----	-----	-----	-----	-----	-----	-----	-----	-----	-----	-----	-----	-----	-----	-----	-----	-----	-----	-----	-----	-----	-----	-----	-----	-----	-----	-----	-----	-----	-----	-----	-----	-----	-----	-----	-----	-----	-----	-----	-----	-----	-----	-----	-----	-----	-----	-----	-----	-----	-----	-----	-----	-----	-----	-----	-----	-----	-----	-----	-----	-----	-----	-----	-----	-----	-----	-----	-----	-----	-----	-----	-----	-----	-----	-----	-----	-----	-----	-----	-----	-----	-----	-----	-----	-----	-----	-----	-----	-----	-----	-----	-----	-----	-----	-----	-----	-----	-----	-----	-----	-----	-----	-----	-----	-----	-----	-----	-----	-----	-----	-----	-----	-----	-----	-----	-----	-----	-----	-----	-----	-----	-----	-----	-----	-----	-----	-----	-----	-----	-----	-----	-----	-----	-----	-----	-----	-----	-----	-----	-----	-----	-----	-----	-----	-----	-----	-----	-----	-----	-----	-----	-----	-----	-----	-----	-----	-----	-----	-----	-----	-----	-----	-----	-----	-----	-----	-----	-----	-----	-----	-----	-----	-----	-----	-----	-----	-----	-----	-----	-----	-----	-----	-----	-----	-----	-----	-----	-----	-----	-----	-----	-----	-----	-----	-----	-----	-----	-----	-----	-----	-----	-----	-----	-----	-----	-----	-----	-----	-----	-----	-----	-----	-----	-----	-----	-----	-----	-----	-----	-----	-----	-----	-----	-----	-----	-----	-----	-----	-----	-----	-----	-----	-----	-----	-----	-----	-----	-----	-----	-----	-----	-----	-----	-----	-----	-----	-----	-----	-----	-----	-----	-----	-----	-----	-----	-----	-----	-----	-----	-----	-----	-----	-----	-----	-----	-----	-----	-----	-----	-----	-----	-----	-----	-----	-----	-----	-----	-----	-----	-----	-----	-----	-----	-----	-----	-----	-----	-----	-----	-----	-----	-----	-----	-----	-----	-----	-----	-----	-----	-----	-----	-----	-----	-----	-----	-----	-----	-----	-----	-----	-----	-----	-----	-----	-----	-----	-----	-----	-----	-----	-----	-----	-----	-----	-----	-----	-----	-----	-----	-----	-----	-----	-----	-----	-----	-----	-----	-----	-----

FOR CONSTRUCTION



SOLALITE BOLLARD DETAILS OR SIMILAR APPROVED



STEEL BOLLARD DETAILS

TABLE 3	
POST BASE DIA. (mm)	BASE PLATE SIZE (mm)
76	175 x 175
89	200 x 200
114	250 x 250

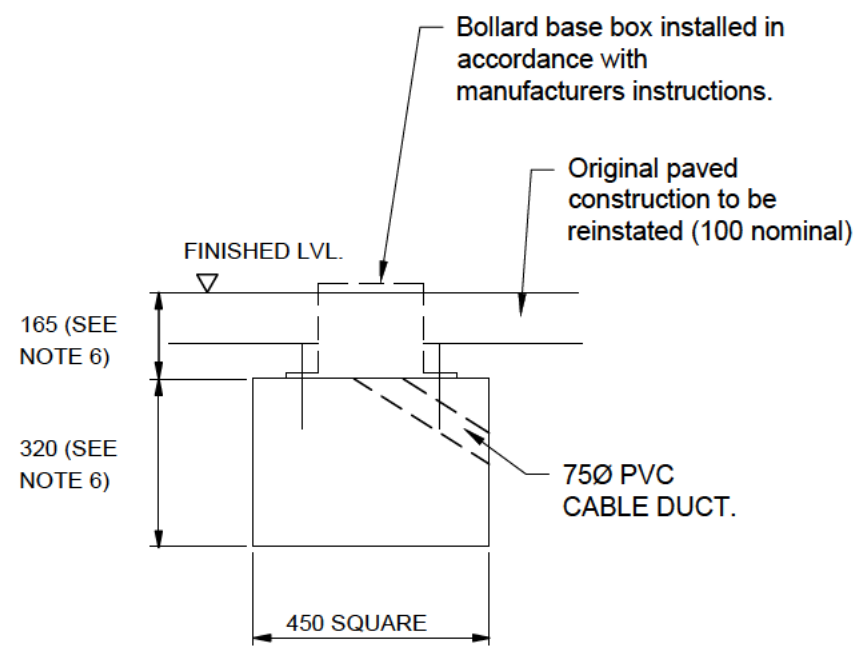
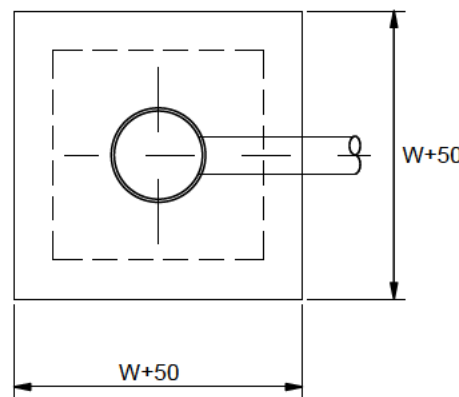
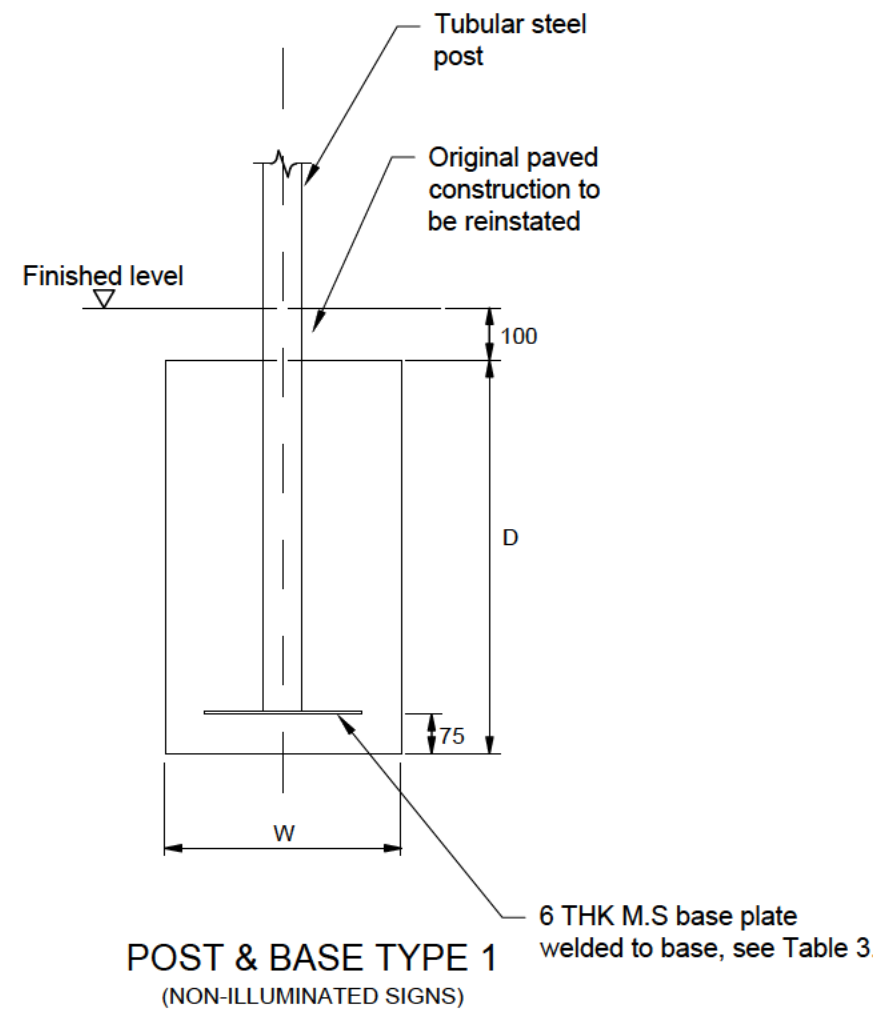


TABLE 4 WIDE BASED POSTS TYPE 2	
SHAFT DIAMETER	BASE DIAMETER
76mm	140mm
89mm	168mm
114mm	194mm
PLANTING DEPTH	DOOR OPTIONS
600mm	400 x 110mm
750mm	500 x 110mm
900mm	600 x 115mm
1200mm	



POST BASE-PLAN

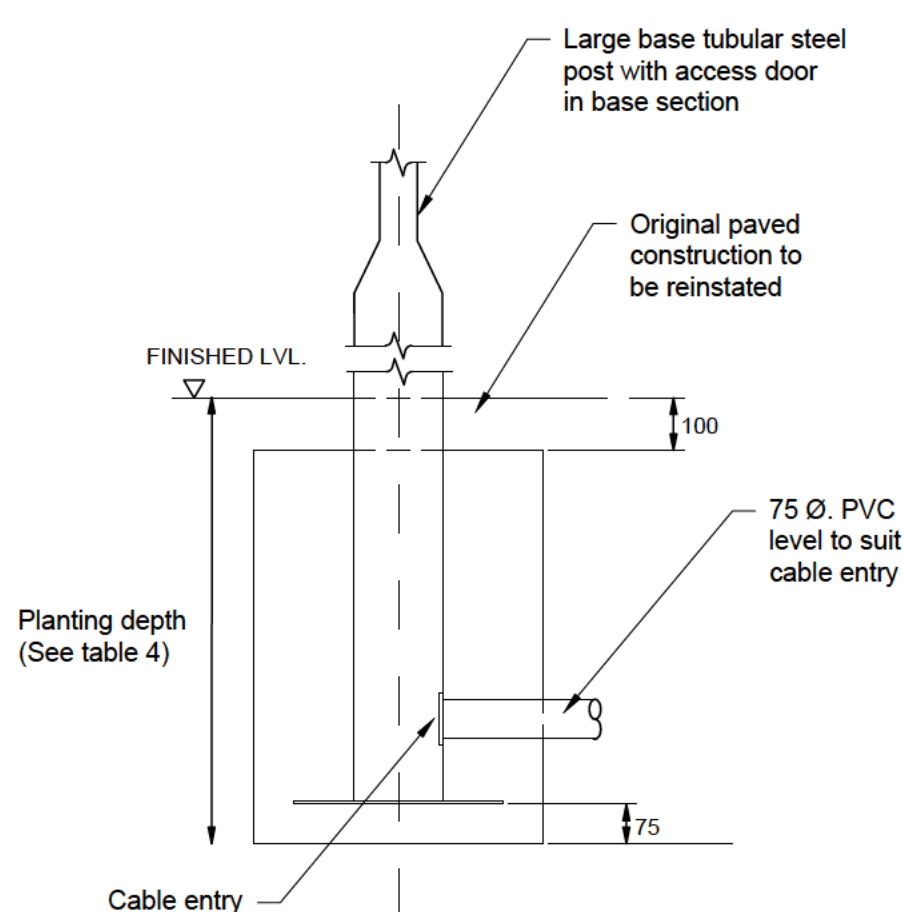
TRAFFIC SIGN POST AND BASE DETAILS



POST & BASE TYPE 1
(NON-ILLUMINATED SIGNS)

TABLE 1 (CATEGORY 1 - SHELTERED URBAN CONDITIONS)			
AREA OF SIGN (m²)	POST DIA. (mm)	FOUNDATION DIMENSION 'D' (mm)	FOUNDATION DIMENSION 'W' (mm)
0-0.35	76	750	600
0.36-0.74	76	800	750
0.75-1.19	89	850	900
1.20-1.70	114	850	1050

TABLE 2 (CATEGORY 4 - NORMAL CONDITIONS)			
AREA OF SIGN (m²)	POST DIA. (mm)	FOUNDATION DIMENSION 'D' (mm)	FOUNDATION DIMENSION 'W' (mm)
0-0.35	76	750	700
0.36-0.59	76	750	850
0.60-0.69	89	900	850
0.70-0.89	89	800	950
0.90-1.19	114	850	1050
1.20-1.70	114	950	1150



POST & BASE TYPE 2
(ILLUMINATED SIGNS)

GENERAL NOTES

- THIS DRAWING TO BE READ IN CONJUNCTION WITH ALL THE RELEVANT AECOM DRAWINGS AND SPECIFICATIONS
- DO NOT SCALE FROM THIS DRAWING. USE FIGURED DIMENSIONS ONLY. ALL DIMENSIONS ARE IN MILLIMETERS UNLESS OTHERWISE STATED.
- REFER TO THE CONSTRUCTION DRAWINGS FOR ALL SETTING OUT DETAILS AND FINISHED SURFACE LEVELS. ALL PAVEMENT AREAS AND TYPES TO BE CONFIRMED WITH THE SUPERVISOR PRIOR TO CONSTRUCTION.

STEEL BOLLARD NOTES

- 125 DIA. STEEL BOLLARD TO BE MODIFIED 'NORTHWOOD' TYPE MANUFACTURED BY FURNITUBES INTERNATIONAL LTD. 'HARDWICK' TYPE MANUFACTURED BY DOROTHEA LTD, OR SIMILAR APPROVED.
- BOLLARDS SHALL BE SUPPLIED GALVANISED AND PRIMED FOR PAINTING.
- REFLECTIVE BAND DIAMOND GRADE TO BE PROVIDED 75MM WIDE AT THE TOP AND AT MID-HEIGHT.
- REFLECTIVE BANDS TO BE YELLOW AT ROAD JUNCTIONS AND WHITE/RED AT OTHER LOCATIONS WITH WHITE BAND FACING NEAR-SIDE TRAFFIC

2	For Construction	AC	SJR	08.01.18
1	For Comment	AC	SJR	04.01.18
Rev	Revision details	Chkd	Appd	Date

Drawn: ANAC	Preliminary
Design: MR	For comment
Chkd: AC	For tender
Appd: SJR	For construction
Date: 04.01.18	As constructed
	Other



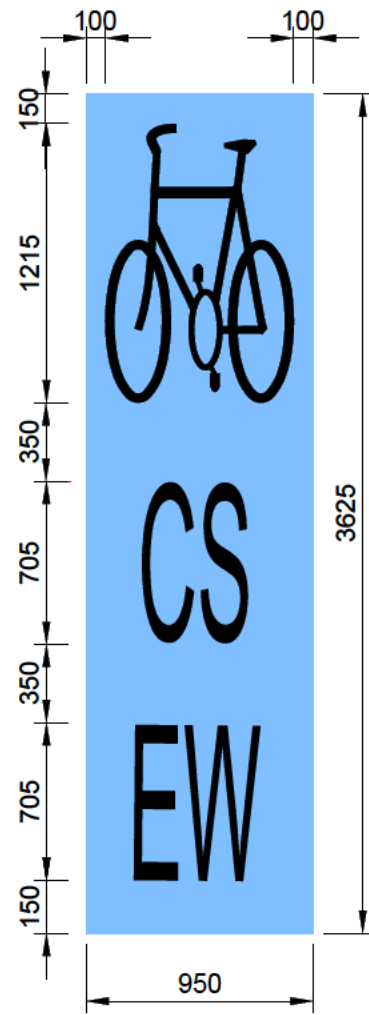
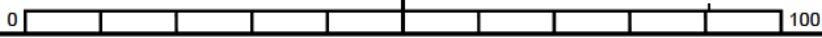
Project Name
Cycle Superhighways East - West
Construction Packages 12

Drawing Title
Transportation
STANDARD DETAILS
1200 SERIES

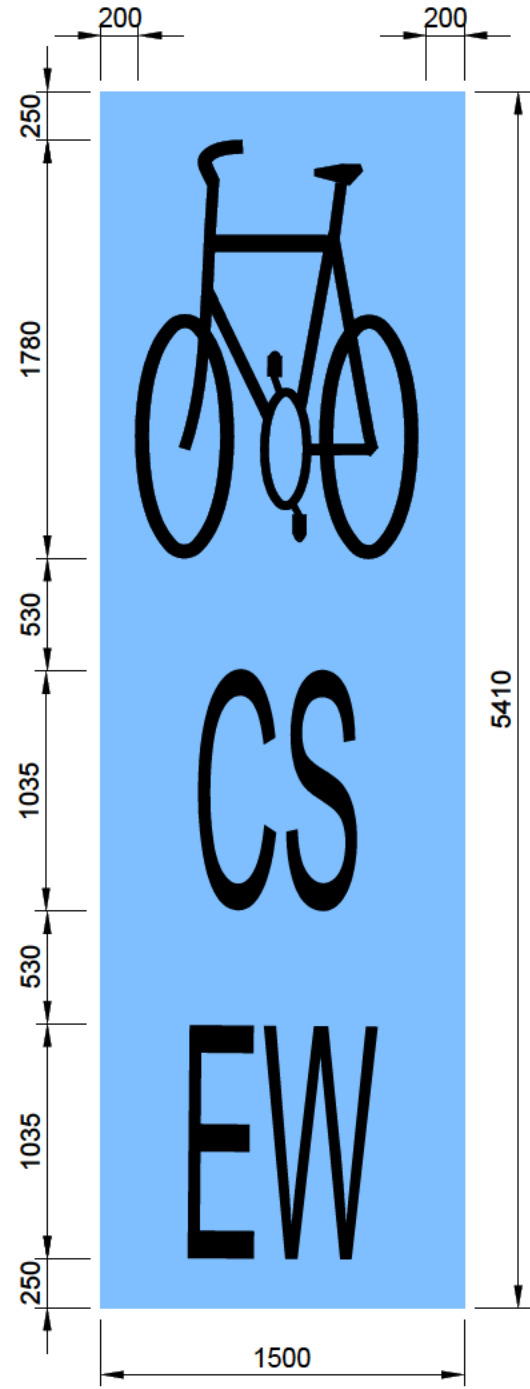
Original Drawing Size : A1	Dimensions : mm
Scale : N.T.S	Copyright © ConwayAecom

Drawing No 60320925-F001-SD-1201	Rev 2
-------------------------------------	----------

FOR CONSTRUCTION



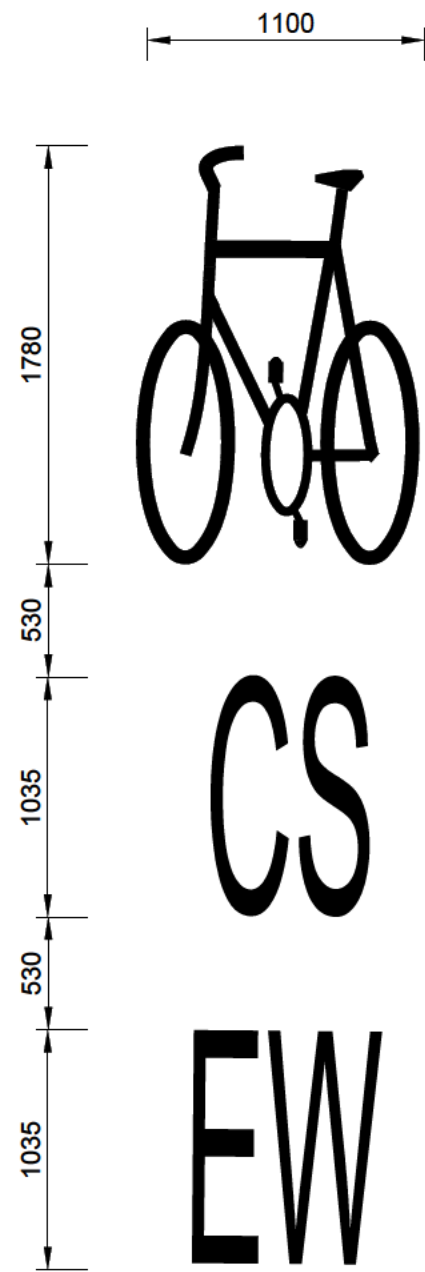
SMALL-SIZED PATCH (Type 2b)
(Overall size 3625mm x 950mm wide)



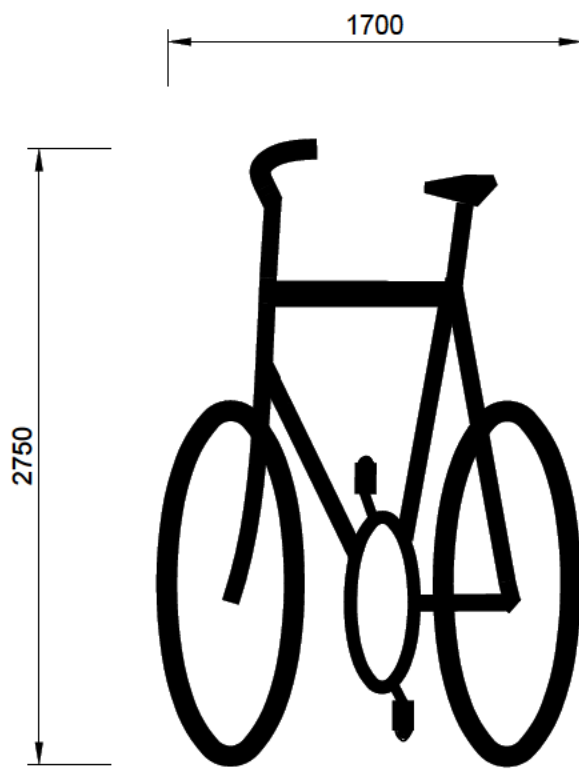
MEDIUM-SIZED PATCH (Type 2a)
(Overall size 5410mm x1500mm wide)



SMALL-SIZED LOGO



MEDIUM-SIZED LOGO



LARGE-SIZED LOGO IN ASL

CYCLE SYMBOL MARKING (Diag No. 1057) WITH CS ROUTE NO.WITHOUT BLUE SURFACE PATCH

GENERAL NOTES

1. THIS DRAWING TO BE READ IN CONJUNCTION WITH ALL THE RELEVANT AECOM DRAWINGS AND SPECIFICATIONS
2. DO NOT SCALE FROM THIS DRAWING. USE FIGURED DIMENSIONS ONLY. ALL DIMENSIONS ARE IN MILLIMETERS UNLESS OTHERWISE STATED.
3. REFER TO THE CONSTRUCTION DRAWINGS FOR ALL SETTING OUT DETAILS AND FINISHED SURFACE LEVELS. ALL PAVEMENT AREAS AND TYPES TO BE CONFIRMED WITH THE SUPERVISOR PRIOR TO CONSTRUCTION.

ROAD MARKING NOTES

1. ALL ROAD MARKINGS SHALL BE IN ACCORDANCE WITH TRAFFIC SIGNS REGULATIONS AND GENERAL DIRECTIONS 2002.

2	For Construction	AC	SJR	08.01.18
1	For Comment	AC	SJR	04.01.18
Rev	Revision details	Chkd	Appd	Date

Drawn: MR	Preliminary	
Design: MR	For comment	
Chkd: AC	For tender	
Appd: SJR	For construction	✓
Date: 04.01.18	As constructed	
	Other	



Project Name
Cycle Superhighways East - West
Construction Packages 12

Drawing Title
Transportation
STANDARD DETAILS
1200 SERIES

Original Drawing Size : A1	Dimensions : mm
Scale : N.T.S	Copyright © ConwayAecom

Drawing No 60320925-F001-SD-1202	Rev 2
-------------------------------------	----------

FOR CONSTRUCTION