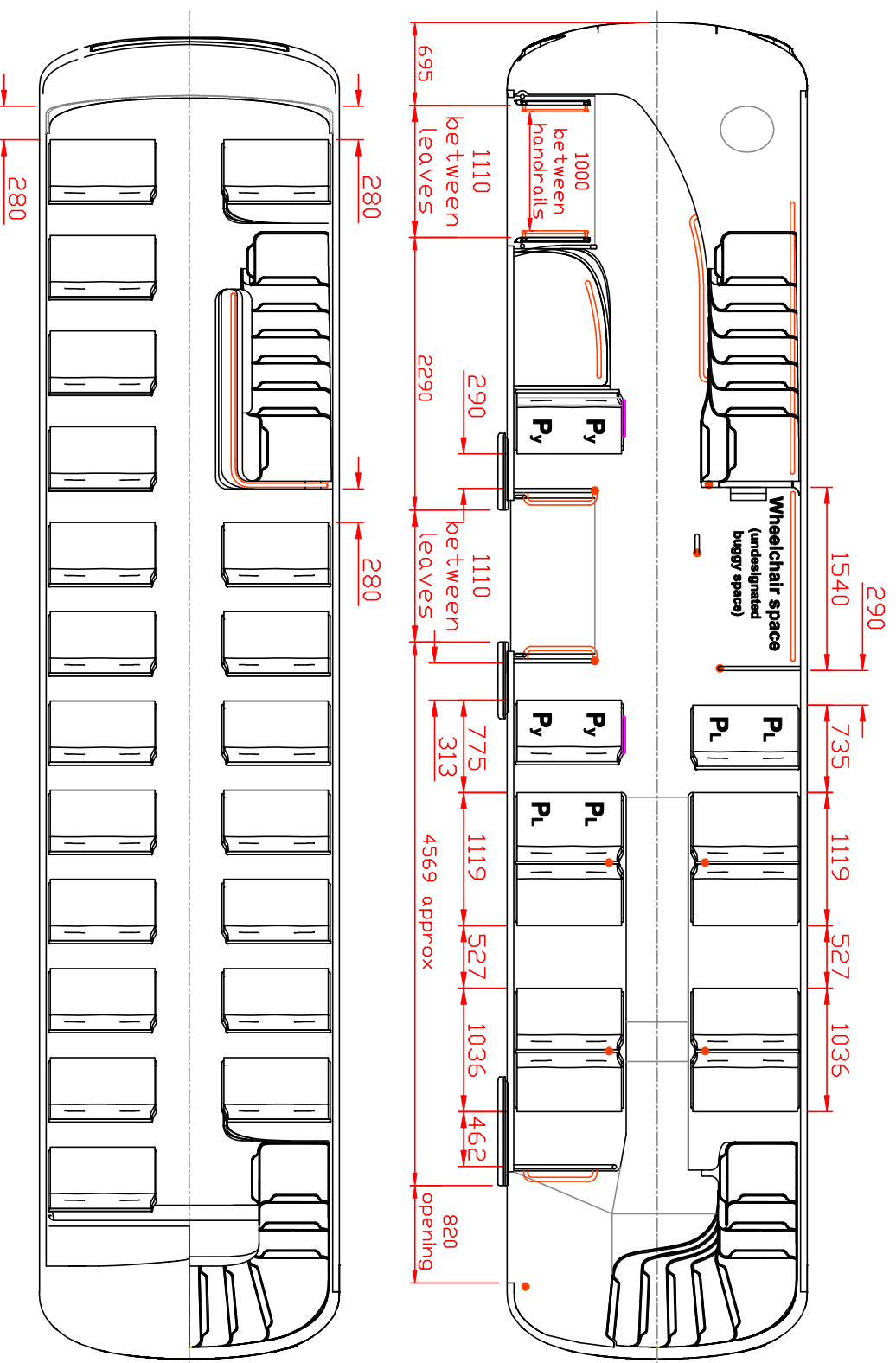
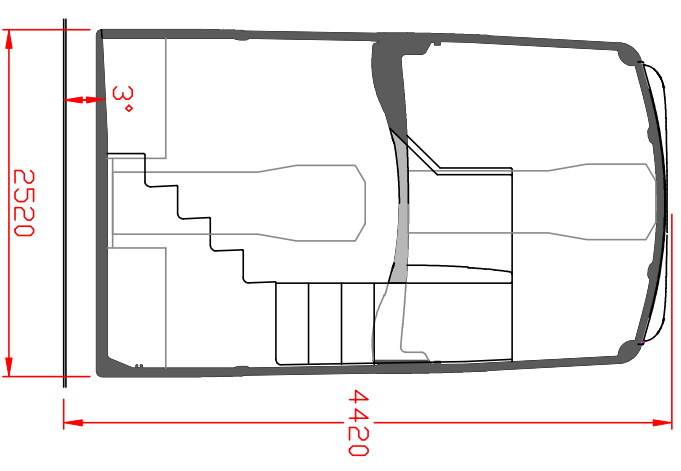
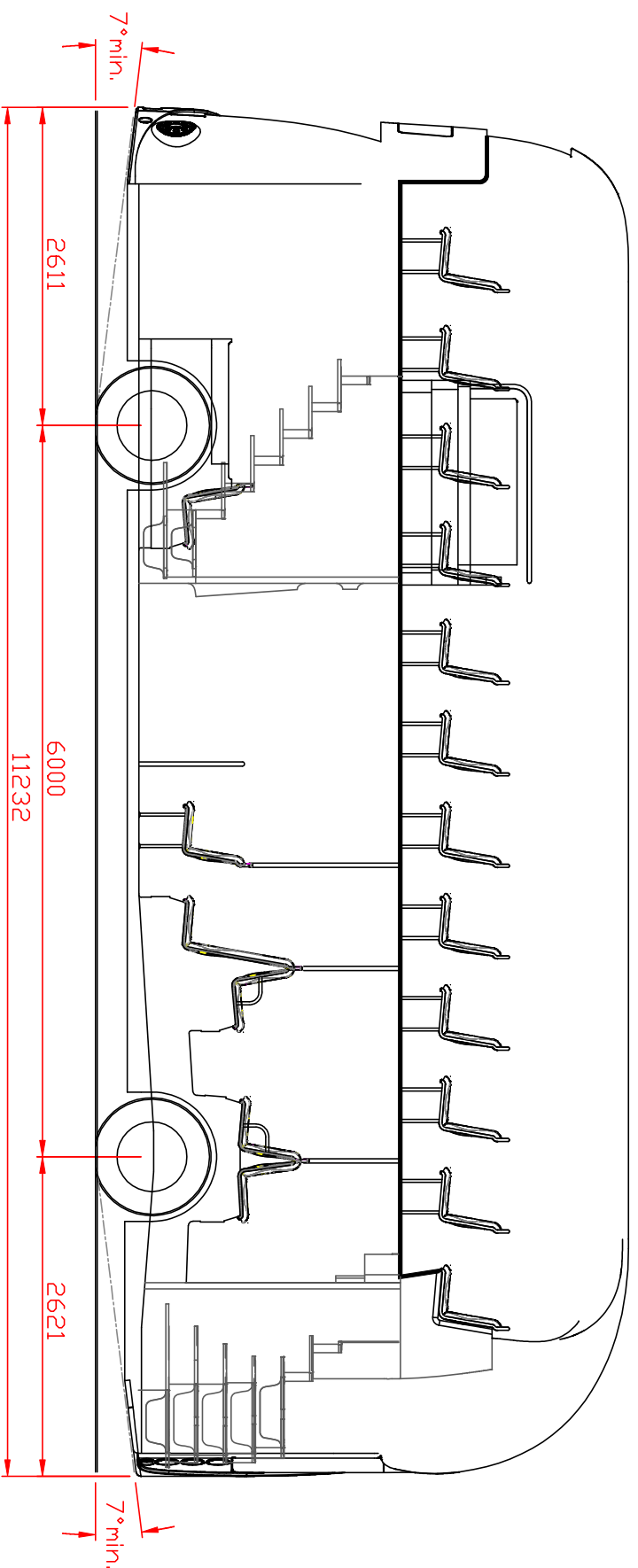


Wrightbus New Bus for London

SPECIFICATION LAYOUT CUSTOMER DRAWING No. CUS-02978-2

**Provisional drawing
Uncontrolled document**



P_y = Priority seat
P_L = Preferential seat

- Maximum Capacity _____ 87
- Maximum Seated _____ 40 Top
- Maximum Seated _____ 22 Btm
- Maximum Standees _____ 25
- Body Length _____ 11232mm
- Body Width _____ 2520mm
- Overall Vehicle Height (unladen) _____ 4420mm
- Wheel base _____ 6000mm
- Front Overhang _____ 2611mm
- Rear Overhang _____ 2621mm
- Entrance step height at door 1 & 2 _____ 315mm
- Entrance step height at door 3 _____ 330mm
- Aisle Width (between seats) _____ 590mm btm
535mm top
- Seat Manufacturer _____ Rowan Telmac
- Seat Type _____ NBfL
- Both decks to EC Regulation 107

● This Version Drawn By / Date _____ S.McC. 01/Dec/14