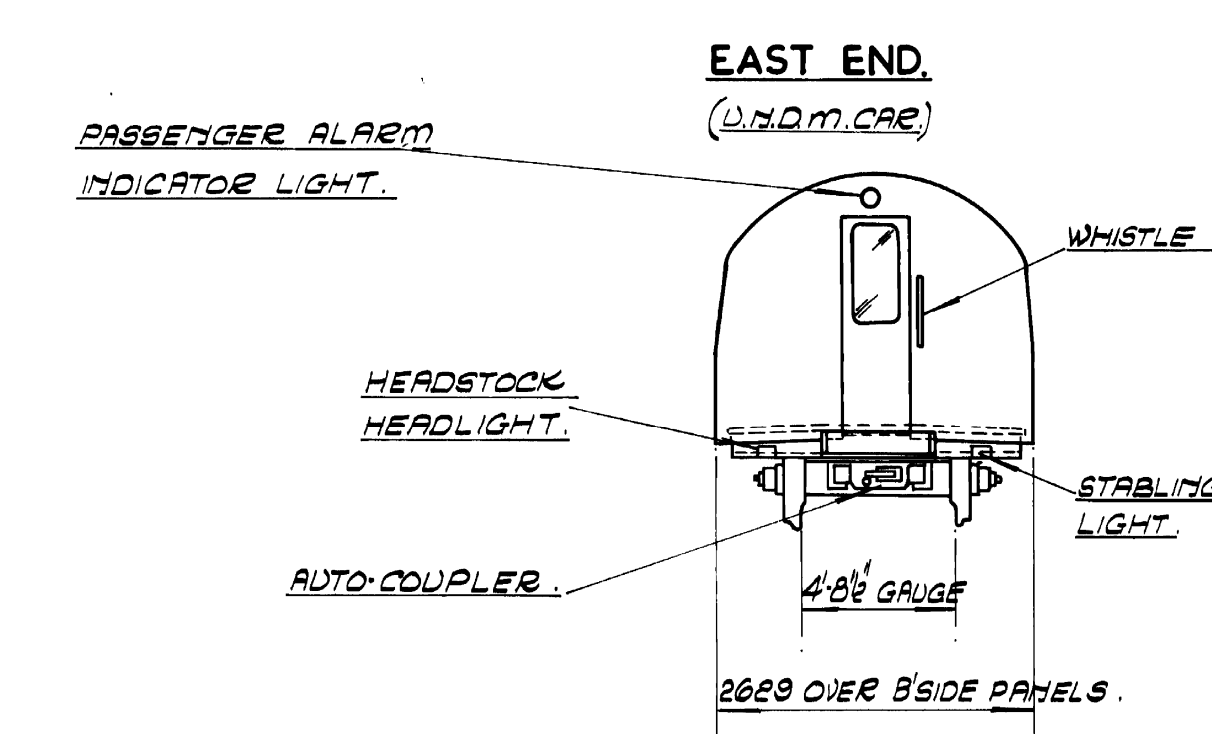
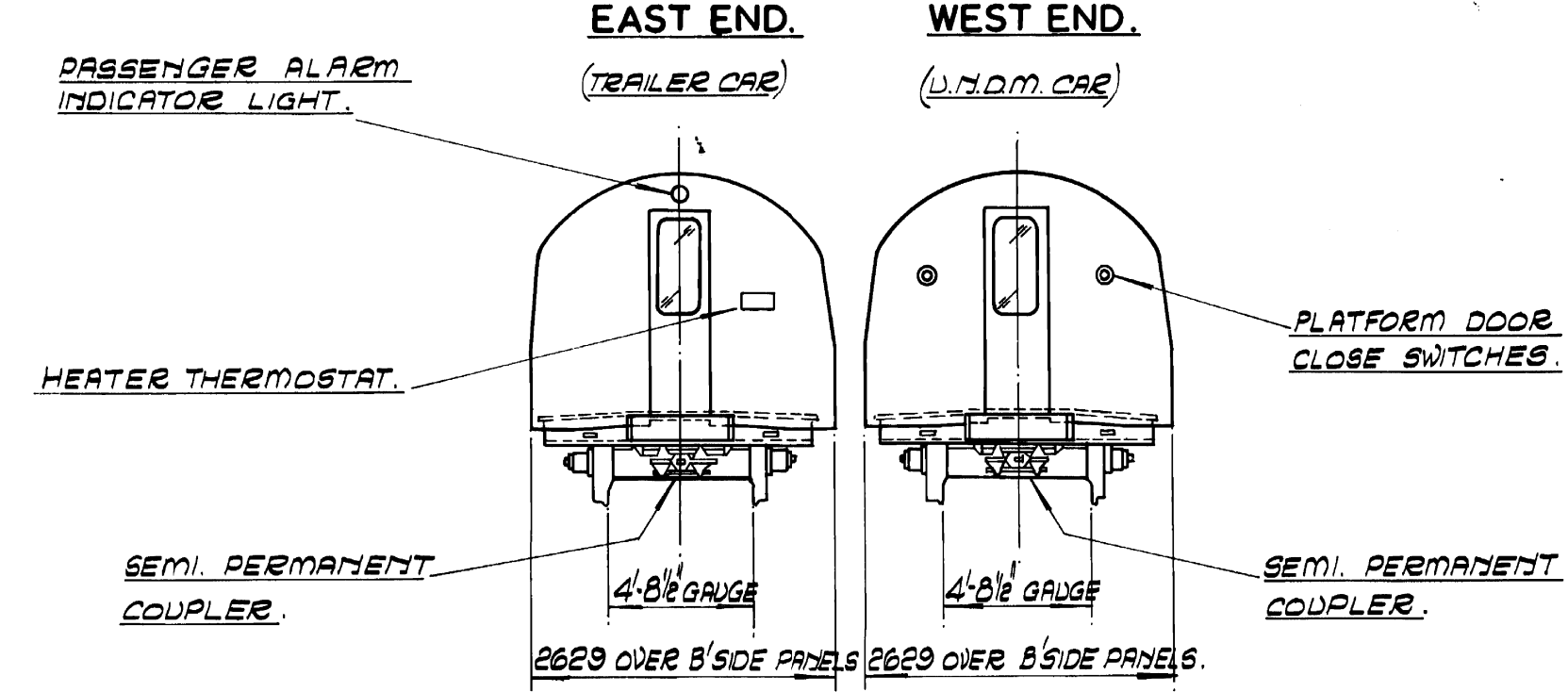
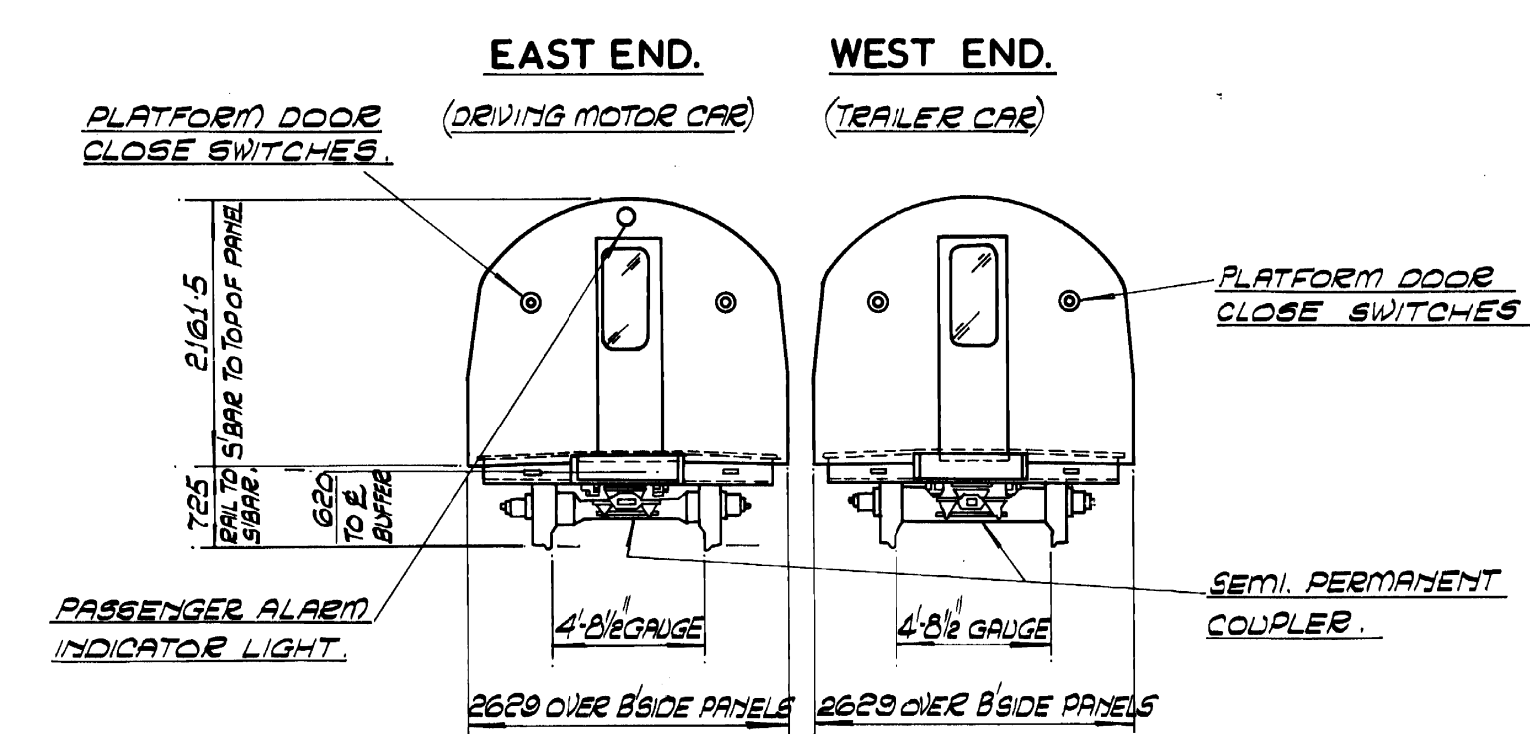
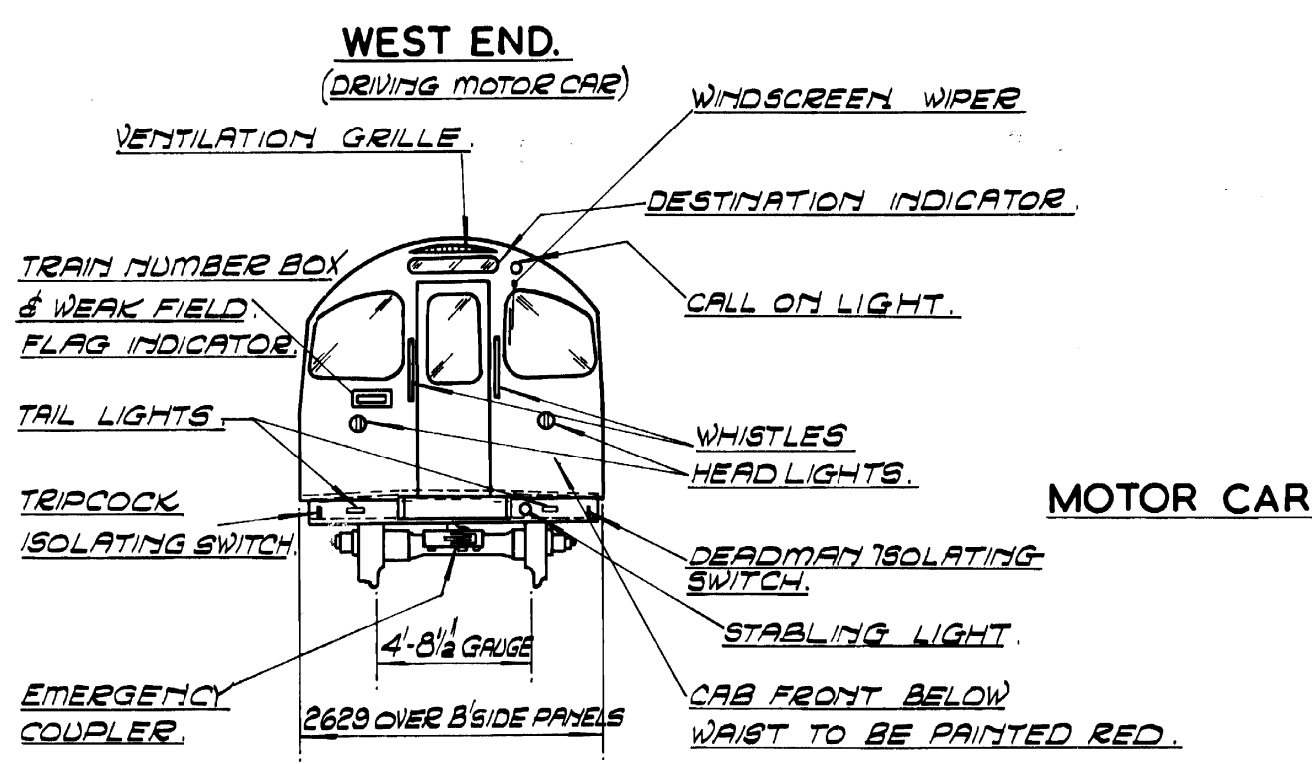
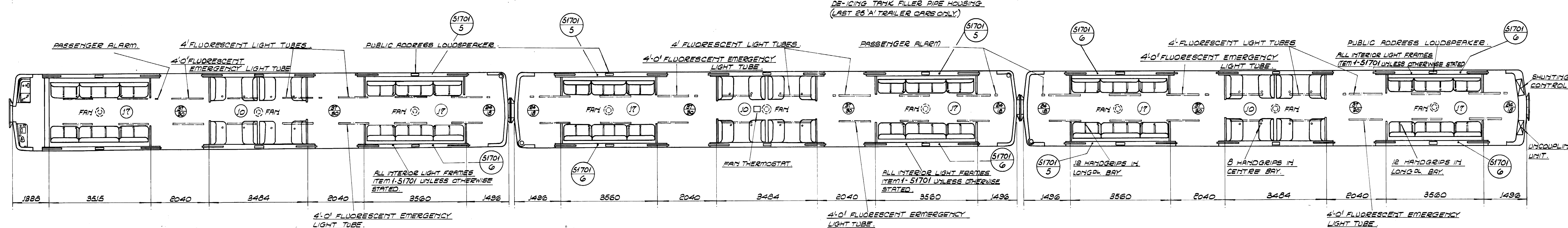
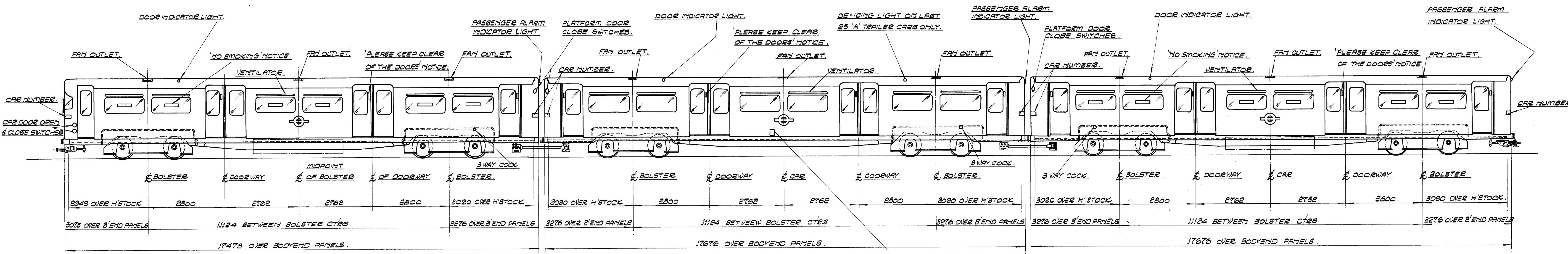


VALID ONLY ON RELEASE DATE SHOWN
05 JAN 2015



REFERS TO STANDING PASSENGERS UTILISING LUGGAGE SPACE IN STANDBACKS.

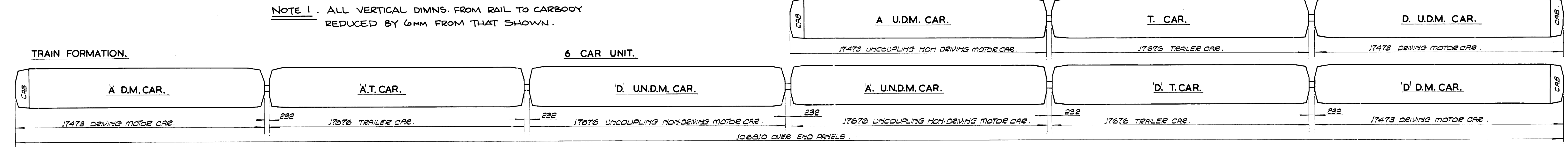
REFERS TO STANDING PASSENGERS WHEN STANDBACKS ARE FILLED WITH LUGGAGE.

PASSENGER ARRANGEMENT

44	SEATING MOTOR TRAILER & U.D.M. CARS
148	STANDING WITHOUT LUGGAGE MOTOR CAR
188	TRAILER & U.D.M. CARS
122	WITH MOTOR CARS
140	TRAILER & U.D.M. CARS

FINISH OF ROOF:
 ROOF PANELS TO BE PAINTED ON EXTERIOR WITH NIGHT B.S. 381C 1964 (1ST 10 WHITE) EXTERIOR WITH BELLWIT WHITE.

NOTE: NO SMOKING NOTICES TO BE FITTED TO ALL CARS EXCEPT TRAILERS.



NOTE 1. ALL VERTICAL DIMNS. FROM RAIL TO CARBODY REDUCED BY 6mm FROM THAT SHOWN.

A MOD 11907 NOTE 1 ADDED DIN 2543 AEC 1.2.13

1973 TUBE STOCK.

GENERAL ARRGT AND BLOCK PLAN.
 SINGLE ENDED UNIT.

SCALE: 1/50

LONDON TRANSPORT EXECUTIVE
 CHIEF MECHL. ENGINEERS OFFICE

DRAWING No. 51165^A

DATE DEC 1975

OFFICE 414 FILING 414

Transport for London
 London Underground
 MAYOR OF LONDON

UNCONTROLLED COPY
 WILL NOT BE UPDATED

THIS DRAWING MAY NOT BE CURRENT
 AND SUBJECT TO AMENDMENT.
 THEREFORE DO NOT PROCURE OR
 MANUFACTURE ANY PART THERE OF,
 WITHOUT FIRST SEEKING VERIFICATION
 FROM THE RSE - ERM BEFORE USE

Transport for London
 London Underground
 MAYOR OF LONDON

UNCONTROLLED COPY
 WILL NOT BE UPDATED

THIS DRAWING MAY NOT BE CURRENT
 AND SUBJECT TO AMENDMENT.
 THEREFORE DO NOT PROCURE OR
 MANUFACTURE ANY PART THERE OF,
 WITHOUT FIRST SEEKING VERIFICATION
 FROM THE RSE - ERM BEFORE USE