

## 7. Service Specification

Route: 485

Contract Reference: QC60507

This Service Specification forms section 7 of the ITT and should be read in conjunction with the ITT document, Version 1 dated 29 September 2011.

You are formally invited to tender for the provision of the bus service detailed below and in accordance with this Service Specification. Tenderers must ensure that a Compliant Tender is submitted and this will only be considered for evaluation if all parts of the Tender documents, as set out in section 11, have been received by the Corporation by the Date of Tender. The Tender must be fully completed in the required format, in accordance with the Instructions to Tenderers. A Compliant Tender must comply fully with the requirements of the Framework Agreement; adhere to the requirements of the Service Specification; and reflect the price of operating the Services with new vehicles.

<b>Route Number</b>	485
<b>Terminus Points</b>	Hammersmith Bus Station, Lower and Wandsworth, Ram Street (Options 1 & 2 - via Barnes, Wetland Centre during opening hours) (Option 2 - via Upper Richmond Road and West Hill)
<b>Contract Basis</b>	Incentivised
<b>Commencement Date</b>	5 <sup>th</sup> May 2018
<b>Vehicle Type</b>	55 capacity, dual door, single deck vehicles, minimum 10.2m long
<b>Current Maximum Approved Dimensions</b>	10.2 metres long and 2.44 metres wide
<b>New Vehicles Mandatory</b>	Yes
<b>Hybrid Price Required</b>	No
<b>Sponsored Route</b>	No
<b>Advertising Rights</b>	Operator
<b>Minimum Performance Standard - Options 1 &amp; 2</b>	Departing on Time - No less than 78%
<b>Extension Threshold</b>	Departing on Time Threshold - 81%
<b>Minimum Operated Mileage Standard - Options 1 &amp; 2</b>	No less than 98%

The Date of Tender for this ITT is: No later than 12 Noon on Monday 7<sup>th</sup> August 2017.

*Tenderers should refer to section 3 of Part A for the Service Specification Explanatory Notes and Appendix B of section 5 for the Example Service Specification of the ITT document.*

## **SERVICE SPECIFICATION**

- 1) SERVICE SPEC - ROUTE SPECIFICATION INFORMATION
- 2) NOTES
- 3) SCHEDULE REQUIREMENTS & PINCHPOINTS
- 4) OPERATIONAL CONSIDERATIONS
- 5) ROUTE RECORD, CURRENT PERFORMANCE, QSI BY TIME OF DAY, IBUS MILEAGE & QSI POINTS

## 2) NOTES

### **Proposed Changes:**

At this time, no changes are proposed to the existing service for introduction prior to the commencement of the new Route Agreement for Route No. 485.

Tenderers should note that the following alterations (subject to consultation) are proposed as part of this Service Specification for introduction with the new Route Agreement:

Two structural options are specified as follows:

#### **Option 1**

- No changes are proposed.

#### **Option 2**

- Route No. 485 is re-routed between Putney High Street and Wandsworth via Upper Richmond Road and West Hill instead of Putney Bridge Road.
- **Please see Section 5 for a full list of streets traversed and standing arrangements.**

**Operators should provide the following prices:**

1. **Annual diesel price - based on minimum 5 year contract.**

**Tenderers are encouraged to offer alternative vehicle options in accordance with Part 9 of their tender, including but not limited to:**

1. **Modifications to reduce emissions and fuel consumption (including energy storage, engine stop/start and/or energy efficient components).**
2. **Zero emission vehicles (e.g. electric or fuel cell).**
3. **Existing vehicles.**

### 3) SCHEDULE REQUIREMENTS & PINCHPOINTS - OPTIONS 1 & 2

#### 3.1) MONDAY TO FRIDAY SCHEDULE REQUIREMENTS & PINCHPOINTS

Hammersmith Bus Station, Lower to Wandsworth, Ram Street		Wandsworth, Ram Street to Hammersmith Bus Station, Lower, Stop Z3			
First departure no later than 0700.		First departure no later than 0645.			
0655 - 1935*	Every 30 minutes	0640 - 1920*	Every 30 minutes		
Last departure no earlier than 1930.		Last departure no earlier than 1915.			
<b>Pinchpoints</b>					
Putney Common, Spencer Arms, Lower Richmond Road	0715 - 0915	30 minutes	Barnes, Red Lion	0705 - 0905	30 minutes
	1520 - 1650	30 minutes		1510 - 1640	30 minutes

#### 3.2) SATURDAY AND GOOD FRIDAY SCHEDULE REQUIREMENTS & PINCHPOINTS

Hammersmith Bus Station, Lower to Wandsworth, Ram Street		Wandsworth, Ram Street to Hammersmith Bus Station, Lower, Stop Z3			
First departure no later than 0700.		First departure no later than 0645.			
0655 - 1935*	Every 30 minutes	0640 - 1920*	Every 30 minutes		
Last departure no earlier than 1930.		Last departure no earlier than 1915.			
<b>Pinchpoints</b>					
Putney Common, Spencer Arms, Lower Richmond Road	0915 - 1115	30 minutes	Barnes, Red Lion	0900 - 1100	30 minutes

\* Barnes Wetland Centre is open between 9.30am and 5.30pm from 1<sup>st</sup> March until October 31<sup>st</sup> and between 9.30am and 4.30pm from 1<sup>st</sup> November until February 28<sup>th</sup> (or 29<sup>th</sup> when relevant). Buses on Route No. 485 should be diverted to serve Barnes, Wetland Centre on Mondays to Saturdays in both directions arriving from about 0930 to 1730 hours during British Summer Time and from about 0930 to 1630 hours during the remainder of the year. Outside of these hours, buses should operate direct between Castlenau and Church Road.

#### **4) OPERATIONAL CONSIDERATIONS**

- 4.1) Route No. 485 can suffer unpredictable traffic delays in the Hammersmith Bridge, Barnes and Wandsworth areas.
- 4.2) **Strengthening work to Hammersmith Bridge has been delayed until early 2018 and when works commence may last up to 12 months.**
- 4.3) **The authorised weight limit for London Buses routes across Hammersmith Bridge was 10,620 kg GVW. However, since 28<sup>th</sup> May 2016, due to the poor condition of the deck on Hammersmith Bridge, the weight restriction was tightened to allow only one single deck bus to cross at any one time in any direction. Any vehicle(s) which exceeds this current weight limit will require a change in the authorisation given by The London Borough of Hammersmith & Fulham.**
- 4.4) **There are safety barriers on both sides of the approach to Hammersmith Bridge to stop too many heavy vehicles from crossing it at any one time. Bus drivers must swipe a touch card in order to open the barrier but please note it has a time delay of 90 seconds on it so drivers need to wait and under no circumstances should force open or remove the barrier. New touch cards are provided by TfL free of charge but there will be a charge for replacement touch cards if they are lost.**
- 4.5) Option 2 will require a bus exemption to the banned right turn from Upper Richmond Road to Putney High Street which will require authorisation by the highway authority.
- 4.6) A scheme to improve traffic in Wandsworth High Street (works likely to commence in 2018) and re-generate the town centre is being developed.

#### **5) ROUTE RECORD, CURRENT PERFORMANCE, QSI BY TIME OF DAY, IBUS MILEAGE & QSI POINTS**

- 5.1) **ROUTE RECORD**  
As per Busnet printout.
- 5.2) **CURRENT PERFORMANCE**  
As per current print out.
- 5.3) **QSI BY TIME OF DAY**  
As per current print out.
- 5.4) **IBUS MILEAGE & QSI POINTS**  
As per current print out.

# LONDON BUSES - ROUTE DESCRIPTION

## ROUTE 485: Hammersmith Bus Station - Wandsworth, Ram Street

**Date of Structural Change:** 5 May 2018.

**Date of Service Change:** 5 May 2018.

**Reason for Issue:** {To be specified}.

### STREETS TRAVERSED

**Towards Wandsworth, Ram Street:** Hammersmith Bus Station Low Level, Butterwick, Talgarth Road, Queen Caroline Street, Hammersmith Bridge Road, Hammersmith Bridge, Castelnau, Church Road, Station Road, Mill Hill Road, Lower Richmond Road, Putney High Street, Putney Bridge Road, Armoury Way, Ram Street.

**Special Journey towards Wandsworth, Ram Street between Castelnau and Church Road:** operate from Castelnau, then via Queen Elizabeth Walk, Wetland Centre Entrance, Wetland Centre Roundabout, Wetland Centre Entrance, Queen Elizabeth Walk rejoining line of route at Church Road.

**Towards Hammersmith Bus Station:** Ram Street, Wandsworth High Street, Putney Bridge Road, Putney High Street, Lower Richmond Road, Mill Hill Road, Station Road, Church Road, Castelnau, Hammersmith Bridge, Hammersmith Bridge Road, Queen Caroline Street, Hammersmith Broadway, Hammersmith Bus Station Northern Entrance Ramp, Hammersmith Bus Station Low Level.

**Special Journey towards Hammersmith Bus Station between Church Road and Castelnau:** operate from Church Road, then via Queen Elizabeth Walk, Wetland Centre Entrance, Wetland Centre Roundabout, Wetland Centre Entrance, Queen Elizabeth Walk rejoining line of route at Castelnau.

## **AUTHORISED STANDS, CURTAILMENT POINTS, & BLIND DESCRIPTIONS**

Please note that only stands, curtailment points, & blind descriptions as detailed in this contractual document may be used.

### **HAMMERSMITH BUS STATION, LOWER LEVEL, STAND Z3**

Private stand for 2 buses in Hammersmith Lower Level Bus Station at Stop Z3. Buses proceed from Hammersmith Bus Station Low Level direct to stand, departing to Hammersmith Bus Station Low Level. Set down in Hammersmith Bus Station Low Level, at Stop Z3 (BP5008 - Hammersmith Bus Station, Last Stop on LOR: BP5008 - Hammersmith Bus Station) and pick up in Hammersmith Bus Station Low Level, at Stop L (BP5006 - Hammersmith Bus Station, First Stop on LOR: BP5006 - Hammersmith Bus Station).

AVAILABILITY: At any time.  
OPERATING RESTRICTIONS: No more than 1 bus on Route 485 should be scheduled to stand at any one time.  
MEAL RELIEFS: No meal relief vehicles to stand at any time.  
FERRY VEHICLES: No ferry vehicles to park on stand at any time.  
BLIND DISPLAY: Hammersmith.  
OTHER INFORMATION: 24 hr toilet facilities available.

### **BARNES POND (from Hammersmith Bus Station)**

Public stand for two buses on south side of Church Road, Barnes, commencing opposite party wall of 21/23 Church Road extending 20 metres east. Buses proceed from Church Road direct to stand, departing via Church Road and Station Road to Church Road. Set down in Church Road, at Stop BD (FW31 - Barnes Pond, Last Stop on LOR: FW31 - Barnes Pond) and pick up in Church Road, at Stop BF (15247 - Barnes Pond, First Stop on LOR: 15247 - Barnes Pond).

AVAILABILITY: At any time.  
OPERATING RESTRICTIONS: Unscheduled curtailments only.  
MEAL RELIEFS: No meal relief vehicles to stand at any time.  
FERRY VEHICLES: No ferry vehicles to park on stand at any time.  
BLIND DISPLAY: Barnes Pond.

### **PUTNEY COMMON, SPENCER ARMS (from Hammersmith Bus Station)**

Public stand for three buses on west side of Putney Common, commencing 7 metres south of the junction with Lower Richmond Road and extending 40 metres south.

Buses proceed from Lower Richmond Road via Putney Common, Putney Common Turning Circle and Putney Common to stand, departing via Putney Common, Lower Richmond Road and Mill Hill Road to Station Road. Set down in Putney Common, at Alighting Point (R0429 - Putney Common, Last Stop on LOR: BP4923 - Beverley Road) and pick up in Station Road (BP4924 - Beverley Road, First Stop on LOR: BP4924 - Beverley Road).

AVAILABILITY: At any time.  
OPERATING RESTRICTIONS: Unscheduled curtailments only.  
MEAL RELIEFS: No meal relief vehicles to stand at any time.  
FERRY VEHICLES: No ferry vehicles to park on stand at any time.  
BLIND DISPLAY: Putney Common.

### **WANDSWORTH, RAM STREET**

Public stand for two buses on east side of Ram Street, commencing at a point 36 metres south of Shoreham Close extending 20 metres north.

Buses proceed from Ram Street direct to stand, departing to Ram Street. Set down in Ram Street, at Stop Q (34904 - Ram Street, Last Stop on LOR: 34904 - Ram Street) and pick up in Ram Street, at Stop R (8927 - Ram Street, First Stop on LOR: 8927 - Ram Street).

AVAILABILITY: At any time.  
OPERATING RESTRICTIONS: No more than 1 bus on Route 485 should be scheduled to stand at any one time.  
MEAL RELIEFS: No meal relief vehicles to stand at any time.  
FERRY VEHICLES: No ferry vehicles to park on stand at any time.  
BLIND DISPLAY: Wandsworth.



# LONDON BUSES - ROUTE DESCRIPTION

## ROUTE 485: Hammersmith Bus Station - Wandsworth, Ram Street

**Date of Structural Change:** 6 May 2018.

**Date of Service Change:** 6 May 2018.

**Reason for Issue:** {To be specified}.

### STREETS TRAVERSED

**Towards Wandsworth, Ram Street:** Butterwick, Talgarth Road, Queen Caroline Street, Hammersmith Bridge Road, Hammersmith Bridge, Castelnau, Church Road, Station Road, Mill Hill Road, Lower Richmond Road, Putney High Street, Upper Richmond Road, West Hill, Putney Bridge Road, Armoury Way, Ram Street.

**Special Journey towards Wandsworth, Ram Street between Castelnau and Church Road:** operate from Castelnau, then via Queen Elizabeth Walk, Wetland Centre Entrance, Wetland Centre Roundabout, Wetland Centre Entrance, Queen Elizabeth Walk rejoining line of route at Church Road.

**Towards Hammersmith Bus Station:** Ram Street, Wandsworth High Street, West Hill, Upper Richmond Road, Putney High Street, Lower Richmond Road, Mill Hill Road, Station Road, Church Road, Castelnau, Hammersmith Bridge, Hammersmith Bridge Road, Queen Caroline Street, Hammersmith Broadway, Hammersmith Bus Station Northern Entrance Ramp, Hammersmith Bus Station Low Level.

**Special Journey towards Hammersmith Bus Station between Church Road and Castelnau:** operate from Church Road, then via Queen Elizabeth Walk, Wetland Centre Entrance, Wetland Centre Roundabout, Wetland Centre Entrance, Queen Elizabeth Walk rejoining line of route at Castelnau.

## **AUTHORISED STANDS, CURTAILMENT POINTS, & BLIND DESCRIPTIONS**

Please note that only stands, curtailment points, & blind descriptions as detailed in this contractual document may be used.

### **HAMMERSMITH BUS STATION, LOWER LEVEL, STAND Z3**

Private stand for 2 buses in Hammersmith Lower Level Bus Station at Stop Z3. Buses proceed from Hammersmith Bus Station Low Level direct to stand, departing to Hammersmith Bus Station Low Level. Set down in Hammersmith Bus Station Low Level, at Stop Z3 (BP5008 - Hammersmith Bus Station, Last Stop on LOR: BP5008 - Hammersmith Bus Station) and pick up in Hammersmith Bus Station Low Level, at Stop L (BP5006 - Hammersmith Bus Station, First Stop on LOR: BP5006 - Hammersmith Bus Station).

AVAILABILITY: At any time.  
OPERATING RESTRICTIONS: No more than 1 bus on Route 485 should be scheduled to stand at any one time.  
MEAL RELIEFS: No meal relief vehicles to stand at any time.  
FERRY VEHICLES: No ferry vehicles to park on stand at any time.  
BLIND DISPLAY: Hammersmith.  
OTHER INFORMATION: 24 hr toilet facilities available.

### **BARNES POND (from Hammersmith Bus Station)**

Public stand for two buses on south side of Church Road, Barnes, commencing opposite party wall of 21/23 Church Road extending 20 metres east. Buses proceed from Church Road direct to stand, departing via Church Road and Station Road to Church Road. Set down in Church Road, at Stop BD (FW31 - Barnes Pond, Last Stop on LOR: FW31 - Barnes Pond) and pick up in Church Road, at Stop BF (15247 - Barnes Pond, First Stop on LOR: 15247 - Barnes Pond).

AVAILABILITY: At any time.  
OPERATING RESTRICTIONS: Unscheduled curtailments only.  
MEAL RELIEFS: No meal relief vehicles to stand at any time.  
FERRY VEHICLES: No ferry vehicles to park on stand at any time.  
BLIND DISPLAY: Barnes Pond.

### **PUTNEY COMMON, SPENCER ARMS (from Hammersmith Bus Station)**

Public stand for three buses on west side of Putney Common, commencing 7 metres south of the junction with Lower Richmond Road and extending 40 metres south.

Buses proceed from Lower Richmond Road via Putney Common, Putney Common Turning Circle and Putney Common to stand, departing via Putney Common, Lower Richmond Road and Mill Hill Road to Station Road. Set down in Putney Common, at Alighting Point (R0429 - Putney Common, Last Stop on LOR: BP4923 - Beverley Road) and pick up in Station Road (BP4924 - Beverley Road, First Stop on LOR: BP4924 - Beverley Road).

AVAILABILITY: At any time.  
OPERATING RESTRICTIONS: Unscheduled curtailments only.  
MEAL RELIEFS: No meal relief vehicles to stand at any time.  
FERRY VEHICLES: No ferry vehicles to park on stand at any time.  
BLIND DISPLAY: Putney Common.

### **WANDSWORTH, RAM STREET**

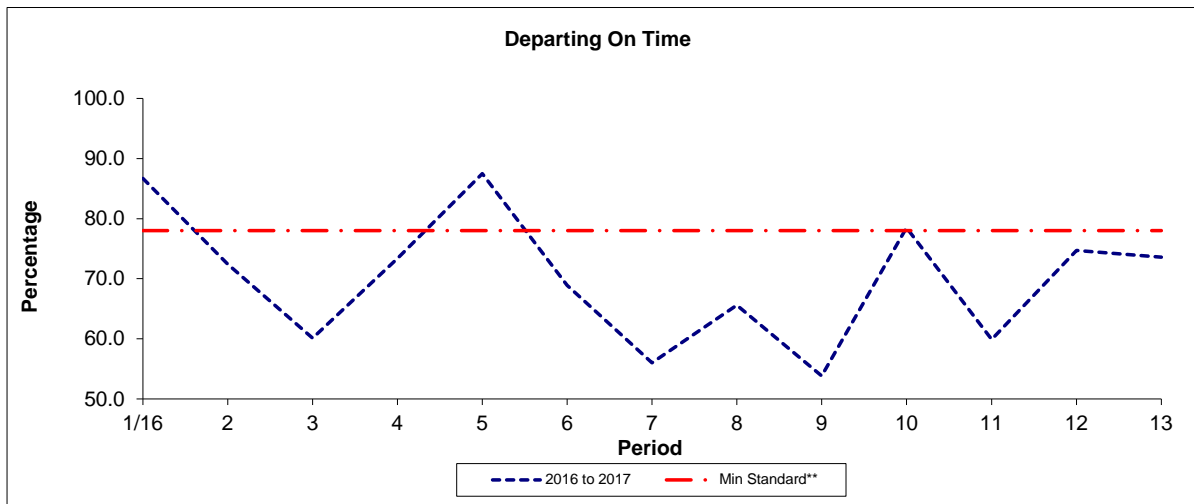
Public stand for two buses on east side of Ram Street, commencing at a point 36 metres south of Shoreham Close extending 20 metres north.

Buses proceed from Ram Street direct to stand, departing to Ram Street. Set down in Ram Street, at Stop Q (34904 - Ram Street, Last Stop on LOR: 34904 - Ram Street) and pick up in Ram Street, at Stop R (8927 - Ram Street, First Stop on LOR: 8927 - Ram Street).

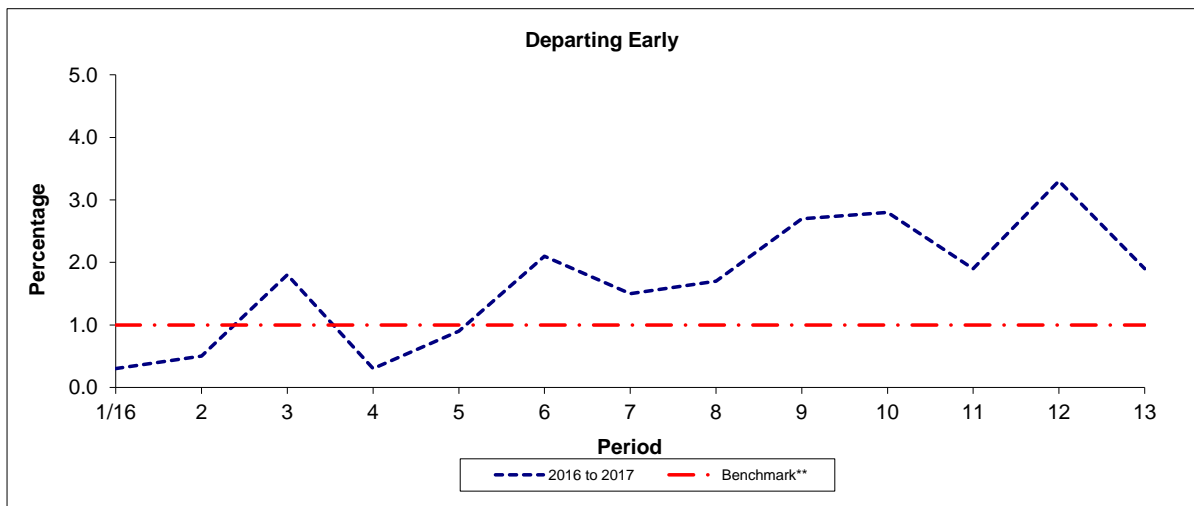
AVAILABILITY: At any time.  
OPERATING RESTRICTIONS: No more than 1 bus on Route 485 should be scheduled to stand at any one time.  
MEAL RELIEFS: No meal relief vehicles to stand at any time.  
FERRY VEHICLES: No ferry vehicles to park on stand at any time.  
BLIND DISPLAY: Wandsworth.

**PART B - PERFORMANCE STATISTICS**

**Route 485**



Period	1/16	2	3	4	5	6	7	8	9	10	11	12	13
2016 to 2017	86.7	72.4	60.1	73.4	87.5	68.9	56.0	65.6	53.8	78.5	59.9	74.7	73.6
Min Standard**	78.0	78.0	78.0	78.0	78.0	78.0	78.0	78.0	78.0	78.0	78.0	78.0	78.0

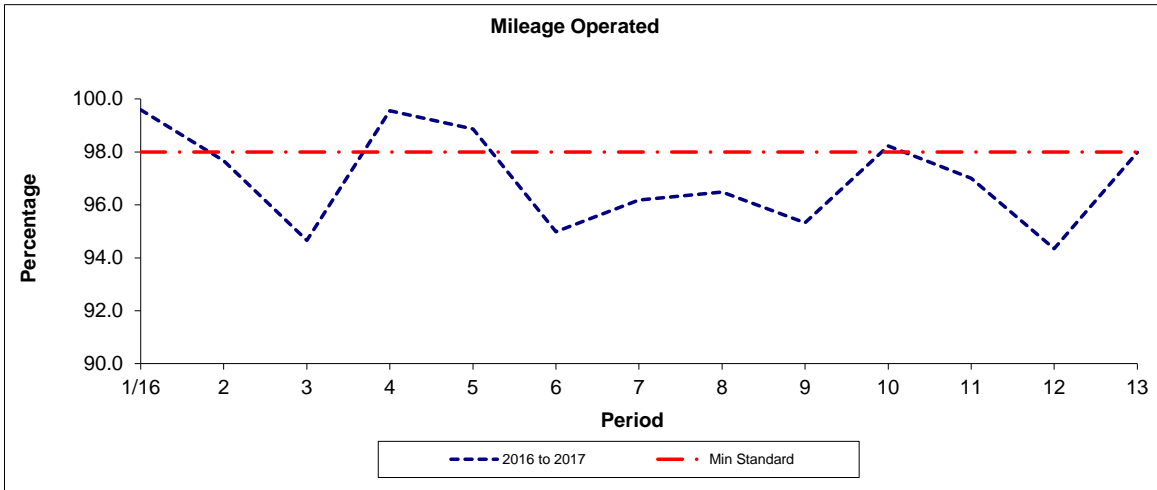


Period	1/16	2	3	4	5	6	7	8	9	10	11	12	13
2016 to 2017	0.3	0.5	1.8	0.3	0.9	2.1	1.5	1.7	2.7	2.8	1.9	3.3	1.9
Benchmark**	1.0	1.0	1.0	1.0	1.0	1.0	1.0	1.0	1.0	1.0	1.0	1.0	1.0

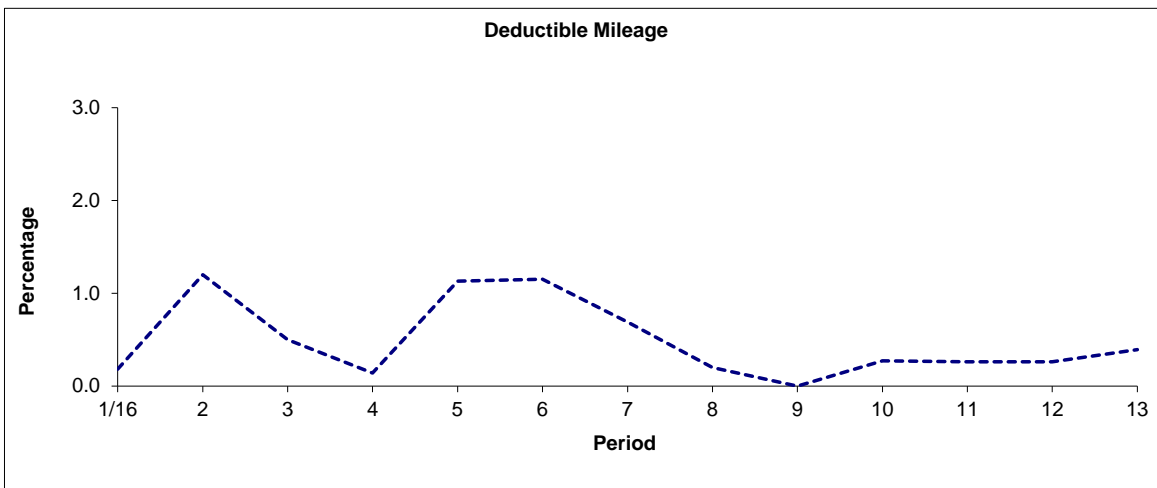
Note : Reliability is actual performance under full iBus (4 weeks data).  
 \*\* Minimum Standards and Benchmarks are those applicable under both options of the new contract.

**PART B - PERFORMANCE STATISTICS**

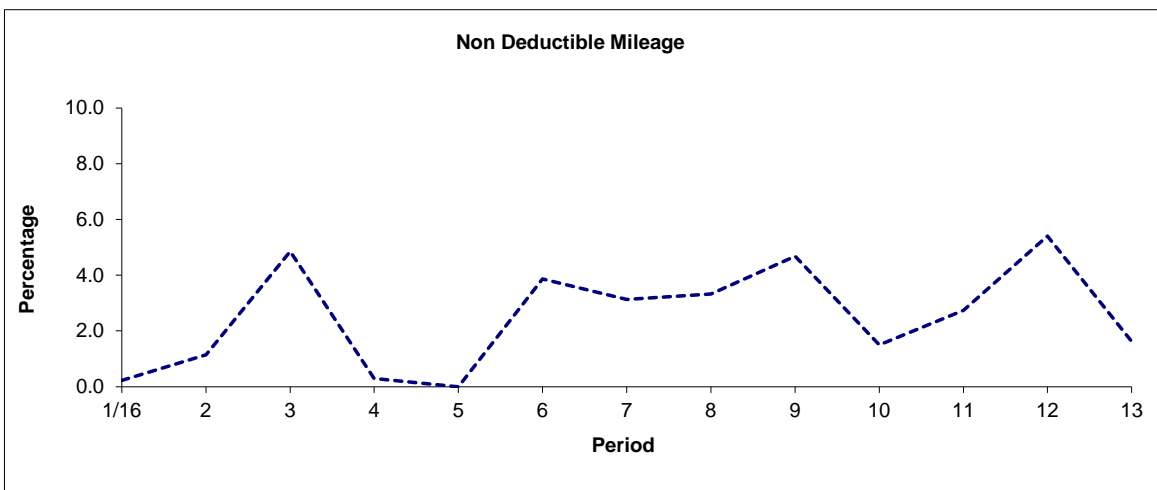
**Route 485**



Period	1/16	2	3	4	5	6	7	8	9	10	11	12	13
2016 to 2017	99.59	97.67	94.66	99.56	98.87	94.99	96.18	96.48	95.32	98.23	97.00	94.34	97.98
Min Standard	98.00	98.00	98.00	98.00	98.00	98.00	98.00	98.00	98.00	98.00	98.00	98.00	98.00



Period	1/16	2	3	4	5	6	7	8	9	10	11	12	13
2016 to 2017	0.18	1.20	0.50	0.14	1.13	1.15	0.69	0.20	0.00	0.27	0.26	0.26	0.39



Period	1/16	2	3	4	5	6	7	8	9	10	11	12	13
2016 to 2017	0.23	1.14	4.85	0.30	0.00	3.86	3.13	3.32	4.68	1.50	2.74	5.40	1.63

Note: Mileage is based on 4 weeks data

**ROUTE 485 - FULL iBUS RESULTS BY TIME OF DAY  
 QUARTERS 1 TO 4 2016/17 (01/04/16 - 31/03/17)**

**MONDAY - FRIDAY**

Time Range	Expected Buses	Observed Buses	Observed Buses (%)	Linked Buses (%)	On Time (%)	Non Arrival / Not Linked (%)	Early (%)	Late (%)
05:00 - 07:00	752	669	89.0	98.9	<b>84.5</b>	1.1	0.8	13.7
07:00 - 10:00	14,863	14,299	96.2	97.5	<b>59.7</b>	2.7	0.6	37.0
10:00 - 13:00	14,870	14,625	98.4	97.5	<b>78.1</b>	2.6	0.6	18.7
13:00 - 16:00	14,930	14,685	98.4	98.5	<b>71.9</b>	1.6	0.7	25.8
16:00 - 19:00	14,604	14,031	96.1	96.3	<b>62.2</b>	4.2	1.3	32.4
19:00 - 22:00	3,956	4,168	105.4	97.4	<b>72.7</b>	3.0	2.7	21.5
<b>All Locations Summary</b>	<b>63,975</b>	<b>62,477</b>	<b>97.7</b>	<b>97.5</b>	<b>68.0</b>	<b>2.8</b>	<b>0.9</b>	<b>28.3</b>

**SATURDAY**

Time Range	Expected Buses	Observed Buses	Observed Buses (%)	Linked Buses (%)	On Time (%)	Non Arrival / Not Linked (%)	Early (%)	Late (%)
05:00 - 07:00	208	207	99.5	100.0	<b>95.2</b>	0.0	0.5	4.3
07:00 - 10:00	3,042	3,019	99.2	99.6	<b>91.9</b>	0.4	0.3	7.4
10:00 - 13:00	3,039	2,848	93.7	97.8	<b>64.8</b>	2.8	1.6	30.8
13:00 - 16:00	2,983	2,937	98.5	95.4	<b>63.1</b>	5.0	1.5	30.3
16:00 - 19:00	3,055	3,025	99.0	97.6	<b>82.0</b>	2.9	2.2	12.9
19:00 - 22:00	824	858	104.1	99.9	<b>83.2</b>	0.1	2.7	14.0
<b>All Locations Summary</b>	<b>13,151</b>	<b>12,894</b>	<b>98.0</b>	<b>97.8</b>	<b>74.1</b>	<b>2.9</b>	<b>1.6</b>	<b>21.4</b>

**ALL DAYS**

Time Range	Expected Buses	Observed Buses	Observed Buses (%)	Linked Buses (%)	On Time (%)	Non Arrival / Not Linked (%)	Early (%)	Late (%)
05:00 - 07:00	960	876	91.3	99.2	<b>85.4</b>	1.0	0.8	12.8
07:00 - 10:00	17,905	17,318	96.7	97.8	<b>62.2</b>	2.5	0.6	34.8
10:00 - 13:00	17,909	17,473	97.6	97.6	<b>75.7</b>	2.6	0.8	20.8
13:00 - 16:00	17,913	17,622	98.4	98.0	<b>70.5</b>	2.2	0.8	26.5
16:00 - 19:00	17,659	17,056	96.6	96.5	<b>64.8</b>	4.0	1.4	29.8
19:00 - 22:00	4,780	5,026	105.1	97.8	<b>74.3</b>	2.6	2.7	20.4
<b>All Locations Summary</b>	<b>77,126</b>	<b>75,371</b>	<b>97.7</b>	<b>97.5</b>	<b>68.8</b>	<b>2.8</b>	<b>1.0</b>	<b>27.4</b>

## Transport for London - QSI Points and Live Mileage List

Route 485 Option 1 Reason for  
 Service change 44576 Re-issue  
 Date 20th August 2016

QSI Points are highlighted

OUT DIRECTION				
Timing Point Code	Stop Number	Stop Name	Metres	Miles
HAMMBL3S	HAMMBL3S	Hammersmith Bus Station, Lower Level, Stand Z3		
HAMMBL	BP5006	Hammersmith Bus Station	0	0.00
	29954	Hammersmith Bridge Road	555	0.34
	BP3191	Hammersmith Bridge	209	0.13
LNDRCN	4609	Lonsdale Road	616	0.38
	15236	The Spinney	217	0.13
	986	Washington Road	415	0.26
	15239	Newport Road	324	0.20
	BP2612	Queen Elizabeth Walk	0	0.00
BRNSWC	BP2611	The Wetlands Centre	0	0.00
BRNSRL	1468	Barnes / Red Lion	333	0.21
	15249	Glebe Road	284	0.18
BRNSPD	FW31	Barnes Pond	209	0.13
	BP4923	Beverley Road	413	0.26
PCOMSA	11141	Comondale	1237	0.77
	11139	Festing Road	307	0.19
	11137	Ruvigny Gardens	312	0.19
	220	Putney Pier	331	0.21
	29620	St Mary's Church / Putney Pier	131	0.08
PTNYCH	8871	Brewhouse Lane	187	0.12
	8867	Deodar Road	435	0.27
	8865	Skelgill Road / Wandsworth Park	179	0.11
	8863	Riverside Quarter Pier	291	0.18
	8861	Frogmore	319	0.20
	29584	Armoury Way	241	0.15
WANDRS	34904	Ram Street	430	0.27
WANDRS S	WANDRS S	WANDSWORTH, RAM STREET	0	0.00
<b>TOTAL ROUTE MILEAGE - OUT DIRECTION</b>			7975	4.96
			metres	miles

## TRANCHE 605

**NOT via Wetlands Centre**

Via Putney Bridge Road

BACK DIRECTION				
Timing Point Code	Stop Number	Stop Name	Metres	Miles
WANDRS S	WANDRS S	WANDSWORTH, RAM STREET		
WANDRS	8927	Ram Street	0	0.00
	20651	Wandsworth Police Station	282	0.18
	20433	Frogmore	308	0.19
	8862	Riverside Quarter Pier	462	0.29
	8864	Skelgill Road / Wandsworth Park	236	0.15
	8866	Deodar Road	185	0.11
PTNYCH	8870	Brewhouse Lane	412	0.26
	219	Putney Pier	308	0.19
	11138	Ruvigny Gardens	257	0.16
	11140	Festing Road	294	0.18
PCOMSA	11142	Commondale	320	0.20
	BP4924	Beverley Road	1301	0.81
BRNSPD	15247	Barnes Pond	402	0.25
	15248	Glebe Road	301	0.19
	BP2612	Queen Elizabeth Walk	0	0.00
BRNSWC	BP2611	The Wetlands Centre	0	0.00
BRNSRL	4606	Barnes / Red Lion	313	0.19
	15238	Newport Road	310	0.19
	987	Washington Road	325	0.20
	15237	The Spinney	295	0.18
LNDRCN	4608	Lonsdale Road	213	0.13
	BP5497	Hammersmith Bridge / North Side	587	0.36
	29576	Hammersmith Bridge Road	395	0.25
HAMMBL3	BP5008	Hammersmith Bus Station	316	0.20
	HAMMBL3S	Hammersmith Bus Station, Lower Level, Stand Z3	0	0.00
<b>TOTAL ROUTE MILEAGE - BACK DIRECTION</b>			7822	4.86
			metres	miles



## Transport for London - QSI Points and Live Mileage List

Route 485 Option 1

Reason for

Service change 44576

Re-issue

Date 20th August 2016

QSI Points are highlighted

OUT DIRECTION				
Timing Point Code	Stop Number	Stop Name	Metres	Miles
HAMMBL3S	HAMMBL3S	Hammersmith Bus Station, Lower Level, Stand Z3		
HAMMBL	BP5006	Hammersmith Bus Station	0	0.00
	29954	Hammersmith Bridge Road	555	0.34
	BP3191	Hammersmith Bridge	209	0.13
LNDRCN	4609	Lonsdale Road	616	0.38
	15236	The Spinney	217	0.13
	986	Washington Road	415	0.26
	15239	Newport Road	324	0.20
	BP2612	Queen Elizabeth Walk	310	0.19
BRNSWC	BP2611	The Wetlands Centre	268	0.17
BRNSRL	1468	Barnes / Red Lion	471	0.29
	15249	Glebe Road	284	0.18
BRNSPD	FW31	Barnes Pond	209	0.13
	BP4923	Beverley Road	413	0.26
PCOMSA	11141	Comondale	1237	0.77
	11139	Festing Road	307	0.19
	11137	Ruvigny Gardens	312	0.19
	220	Putney Pier	331	0.21
	29620	St Mary's Church / Putney Pier	131	0.08
PTNYCH	8871	Brewhouse Lane	187	0.12
	8867	Deodar Road	435	0.27
	8865	Skelgill Road / Wandsworth Park	179	0.11
	8863	Riverside Quarter Pier	291	0.18
	8861	Frogmore	319	0.20
	29584	Armoury Way	241	0.15
WANDRS	34904	Ram Street	430	0.27
<b>TOTAL ROUTE MILEAGE - OUT DIRECTION</b>			8691	5.40
			metres	miles

## TRANCHE 605

### Via Barnes Wetlands Centre

### Via Putney Bridge Road

BACK DIRECTION				
Timing Point Code	Stop Number	Stop Name	Metres	Miles
WANDRS S	WANDRS S	WANDSWORTH, RAM STREET		
WANDRS	8927	Ram Street	0	0.00
	20651	Wandsworth Police Station	282	0.18
	20433	Frogmore	308	0.19
	8862	Riverside Quarter Pier	462	0.29
	8864	Skegill Road / Wandsworth Park	236	0.15
	8866	Deodar Road	185	0.11
PTNYCH	8870	Brewhouse Lane	412	0.26
	219	Putney Pier	308	0.19
	11138	Ruvigny Gardens	257	0.16
	11140	Festing Road	294	0.18
PCOMSA	11142	Comondale	320	0.20
	BP4924	Beverley Road	1301	0.81
BRNSPD	15247	Barnes Pond	402	0.25
	15248	Glebe Road	301	0.19
	BP2612	Queen Elizabeth Walk	328	0.20
BRNSWC	BP2611	The Wetlands Centre	268	0.17
BRNSRL	4606	Barnes / Red Lion	434	0.27
	15238	Newport Road	310	0.19
	987	Washington Road	325	0.20
	15237	The Spinney	295	0.18
LNDRCN	4608	Lonsdale Road	213	0.13
	BP5497	Hammersmith Bridge / North Side	587	0.36
	29576	Hammersmith Bridge Road	395	0.25
HAMMBL3	BP5008	Hammersmith Bus Station	316	0.20
	HAMMBL3S	Hammersmith Bus Station, Lower Level, Stand Z3	0	0.00
<b>TOTAL ROUTE MILEAGE - BACK DIRECTION</b>			8539	5.31
			metres	miles

## Transport for London - QSI Points and Live Mileage List

Route 485 Option 2 Reason for  
 Service change 44576 Re-issue  
 Date 20th August 2016

QSI Points are highlighted

OUT DIRECTION				
Timing Point Code	Stop Number	Stop Name	Metres	Miles
HAMMBL3S	HAMMBL3S	Hammersmith Bus Station, Lower Level, Stand Z3		
HAMMBL	BP5006	Hammersmith Bus Station	0	0.00
	29954	Hammersmith Bridge Road	555	0.34
	BP3191	Hammersmith Bridge	209	0.13
LNDRCN	4609	Lonsdale Road	616	0.38
	15236	The Spinney	217	0.13
	986	Washington Road	415	0.26
	15239	Newport Road	324	0.20
	BP2612	Queen Elizabeth Walk	0	0.00
BRNSWC	BP2611	The Wetlands Centre	0	0.00
BRNSRL	1468	Barnes / Red Lion	333	0.21
	15249	Glebe Road	284	0.18
BRNSPD	FW31	Barnes Pond	209	0.13
	BP4923	Beverley Road	413	0.26
PCOMSA	11141	Comondale	1237	0.77
	11139	Festing Road	307	0.19
	11137	Ruvigny Gardens	312	0.19
	220	Putney Pier	331	0.21
	29620	St Mary's Church / Putney Pier	131	0.08
	11144	Putney Exchange	317	0.20
PTNYSNU	29	Putney Station	313	0.19
	2371	East Putney Station	335	0.21
	R0166	Manfred Road	399	0.25
	2367	Galveston Road	252	0.16
	2365	Wandsworth Museum	271	0.17
	29584	Armoury Way	303	0.19
WANDRS	34904	Ram Street	430	0.27
WANDRS S	WANDRS S	WANDSWORTH, RAM STREET	0	0.00
TOTAL ROUTE MILEAGE - OUT DIRECTION			8513	5.29
			metres	miles

**Mileages in red font are planning estimates & not ibus calculations.**

**Mileage in orange font has been extracted from Route No. 424.**

**Mileages in blue font have been extracted from Route No. 337.**

**FINAL MILEAGE TO BE CONFIRMED.**

## TRANCHE 605

**NOT via Wetlands Centre**

Via Upper Richmond Road

BACK DIRECTION				
Timing Point Code	Stop Number	Stop Name	Metres	Miles
WANDRS S	WANDRS S	WANDSWORTH, RAM STREET		
WANDRS	8927	Ram Street	0	0.00
	8858	Wandsworth Police Station	282	0.18
	2366	Wandsworth Museum	230	0.14
	2368	Galveston Road	241	0.15
	2370	Manfred Road	335	0.21
	2372	East Putney Station	226	0.14
PTNYSNU	4858	Putney Station	460	0.29
	11143	Putney Exchange	488	0.30
	219	Putney Pier	273	0.17
	11138	Ruvigny Gardens	257	0.16
	11140	Festing Road	294	0.18
PCOMSA	11142	Comondale	320	0.20
	BP4924	Beverley Road	1301	0.81
BRNSPD	15247	Barnes Pond	402	0.25
	15248	Glebe Road	301	0.19
	BP2612	Queen Elizabeth Walk	0	0.00
BRNSWC	BP2611	The Wetlands Centre	0	0.00
BRNSRL	4606	Barnes / Red Lion	313	0.19
	15238	Newport Road	310	0.19
	987	Washington Road	325	0.20
	15237	The Spinney	295	0.18
LNDRCN	4608	Lonsdale Road	213	0.13
	BP5497	Hammersmith Bridge / North Side	587	0.36
	29576	Hammersmith Bridge Road	395	0.25
HAMMBL3	BP5008	Hammersmith Bus Station	316	0.20
	HAMMBL3S	Hammersmith Bus Station, Lower Level, Stand Z3	0	0.00
<b>TOTAL ROUTE MILEAGE - BACK DIRECTION</b>			<b>8164</b> <i>metres</i>	<b>5.07</b> <i>miles</i>

**Mileages in red font are planning estimates & not ibus calculations.**

**Mileages in blue font have been extracted from Route No. 337.**

**FINAL MILEAGE TO BE CONFIRMED.**

## Transport for London - QSI Points and Live Mileage List

Route 485 Option 2 Reason for  
 Service change 44576 Re-issue  
 Date 20th August 2016

QSI Points are highlighted

OUT DIRECTION				
Timing Point Code	Stop Number	Stop Name	Metres	Miles
HAMMBL3S	HAMMBL3S	Hammersmith Bus Station, Lower Level, Stand Z3		
HAMMBL	BP5006	Hammersmith Bus Station	0	0.00
	29954	Hammersmith Bridge Road	555	0.34
	BP3191	Hammersmith Bridge	209	0.13
LNDRCN	4609	Lonsdale Road	616	0.38
	15236	The Spinney	217	0.13
	986	Washington Road	415	0.26
	15239	Newport Road	324	0.20
	BP2612	Queen Elizabeth Walk	310	0.19
BRNSWC	BP2611	The Wetlands Centre	268	0.17
BRNSRL	1468	Barnes / Red Lion	471	0.29
	15249	Glebe Road	284	0.18
BRNSPD	FW31	Barnes Pond	209	0.13
	BP4923	Beverley Road	413	0.26
PCOMSA	11141	Comondale	1237	0.77
	11139	Festing Road	307	0.19
	11137	Ruvigny Gardens	312	0.19
	220	Putney Pier	331	0.21
	29620	St Mary's Church / Putney Pier	131	0.08
	11144	Putney Exchange	317	0.20
PTNYSNU	29	Putney Station	313	0.19
	2371	East Putney Station	335	0.21
	R0166	Manfred Road	399	0.25
	2367	Galveston Road	252	0.16
	2365	Wandsworth Museum	271	0.17
	29584	Armoury Way	303	0.19
WANDRS	34904	Ram Street	430	0.27
TOTAL ROUTE MILEAGE - OUT DIRECTION			9229 <i>metres</i>	5.73 <i>miles</i>

**Mileages in red font are planning estimates & not ibus calculations.**

**Mileage in orange font has been extracted from Route No. 424.**

**Mileages in blue font have been extracted from Route No. 337.**

**FINAL MILEAGE TO BE CONFIRMED.**

## TRANCHE 605

**Via Barnes Wetlands Centre**

Via Upper Richmond Road

BACK DIRECTION				
Timing Point Code	Stop Number	Stop Name	Metres	Miles
WANDRS S	WANDRS S	WANDSWORTH, RAM STREET		
WANDRS	8927	Ram Street	0	0.00
	8858	Wandsworth Police Station	282	0.18
	2366	Wandsworth Museum	230	0.14
	2368	Galveston Road	241	0.15
	2370	Manfred Road	335	0.21
	2372	East Putney Station	226	0.14
PTNYS NU	4858	Putney Station	460	0.29
	11143	Putney Exchange	488	0.30
	219	Putney Pier	273	0.17
	11138	Ruvigny Gardens	257	0.16
	11140	Festing Road	294	0.18
PCOMSA	11142	Comondale	320	0.20
	BP4924	Beverley Road	1301	0.81
BRNSPD	15247	Barnes Pond	402	0.25
	15248	Glebe Road	301	0.19
	BP2612	Queen Elizabeth Walk	328	0.20
BRNSWC	BP2611	The Wetlands Centre	268	0.17
BRNSRL	4606	Barnes / Red Lion	434	0.27
	15238	Newport Road	310	0.19
	987	Washington Road	325	0.20
	15237	The Spinney	295	0.18
LNDRCN	4608	Lonsdale Road	213	0.13
	BP5497	Hammersmith Bridge / North Side	587	0.36
	29576	Hammersmith Bridge Road	395	0.25
HAMMBL3	BP5008	Hammersmith Bus Station	316	0.20
	HAMMBL3S	Hammersmith Bus Station, Lower Level, Stand Z3	0	0.00
<b>TOTAL ROUTE MILEAGE - BACK DIRECTION</b>			<b>8881</b>	<b>5.52</b>
			<i>metres</i>	<i>miles</i>

**Mileages in red font are planning estimates & not ibus calculations.**

**Mileages in blue font have been extracted from Route No. 337.**

**FINAL MILEAGE TO BE CONFIRMED.**