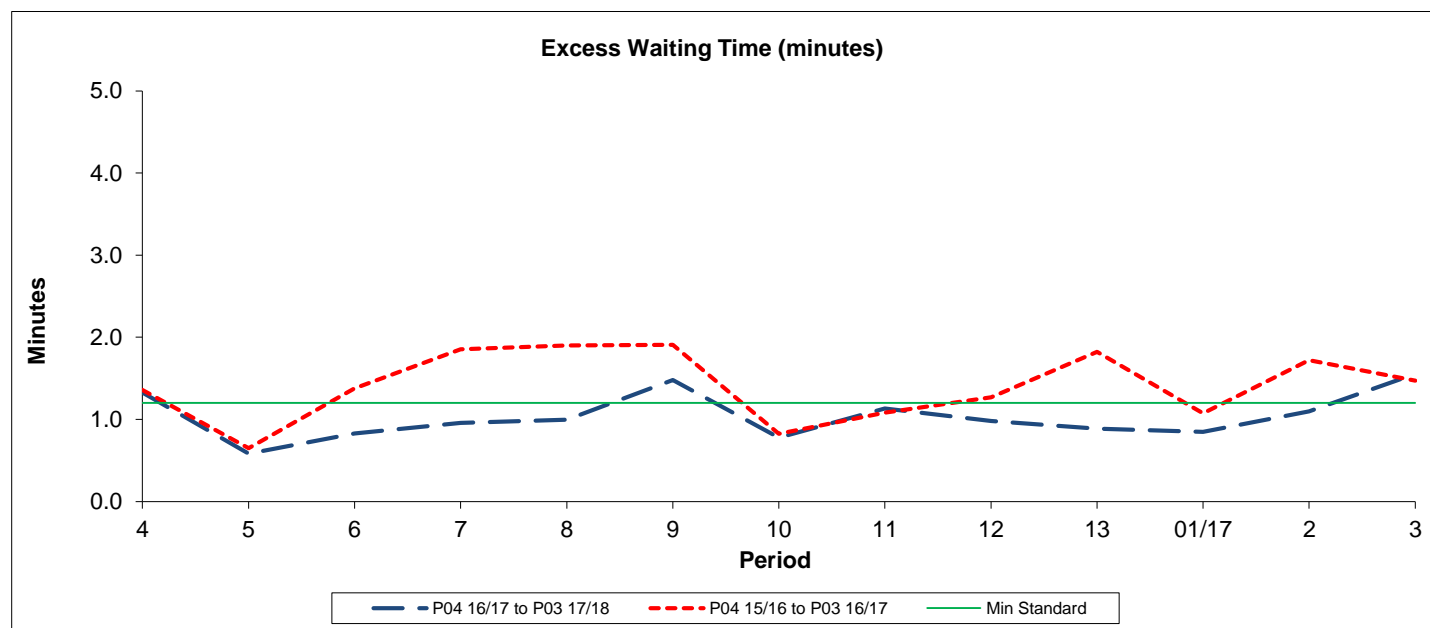


Route 170

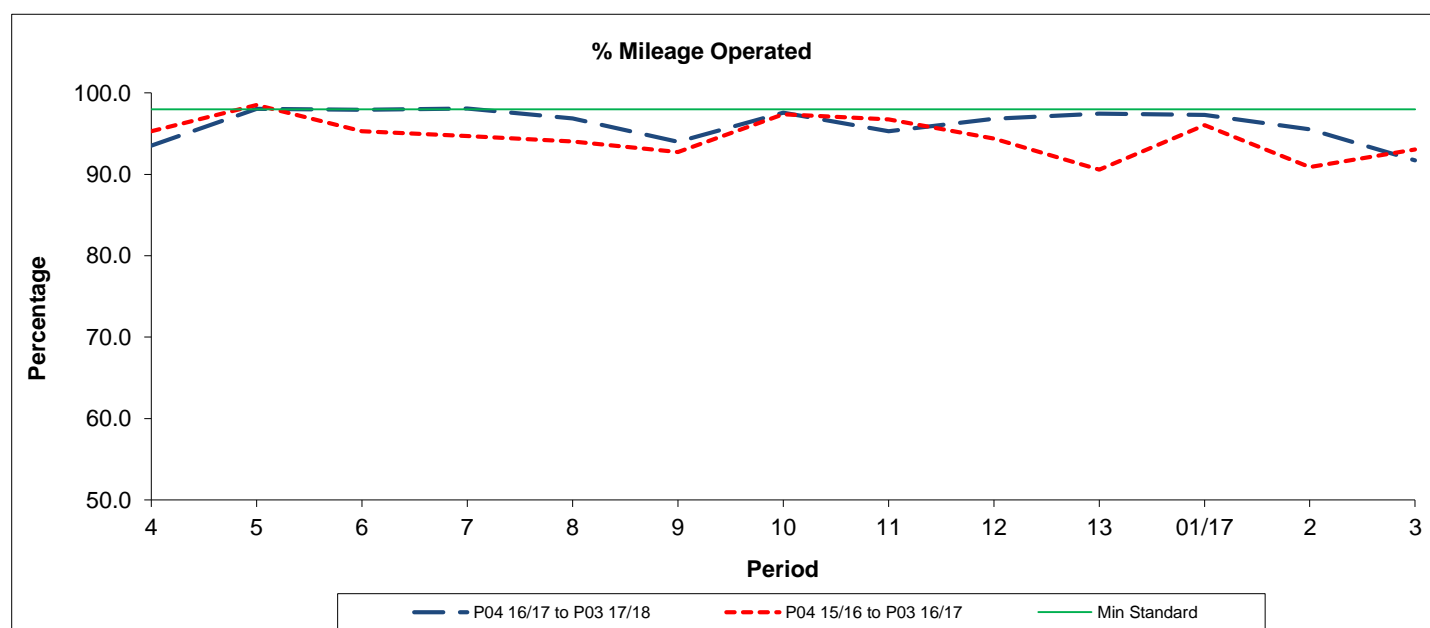
Reliability Performance (High Frequency)



Period / Year	4	5	6	7	8	9	10	11	12	13	01/17	2	3
P04 16/17 to P03 17/18	1.33	0.58	0.83	0.96	1.00	1.48	0.78	1.13	0.98	0.89	0.85	1.10	1.55
P04 15/16 to P03 16/17	1.36	0.65	1.38	1.85	1.90	1.91	0.83	1.08	1.27	1.82	1.07	1.72	1.47
Min Standard	1.20	1.20	1.20	1.20	1.20	1.20	1.20	1.20	1.20	1.20	1.20	1.20	1.20

The Excess Waiting Time figures are based on four weeks data

Mileage Performance



Period / Year	4	5	6	7	8	9	10	11	12	13	01/17	2	3
P04 16/17 to P03 17/18	93.54	98.04	97.95	98.09	96.85	94.00	97.58	95.29	96.82	97.44	97.31	95.55	91.73
P04 15/16 to P03 16/17	95.30	98.52	95.32	94.72	94.03	92.75	97.38	96.74	94.38	90.57	96.06	90.90	93.06
Min Standard	98.00	98.00	98.00	98.00	98.00	98.00	98.00	98.00	98.00	98.00	98.00	98.00	98.00

Mileage figures are based on four weeks data