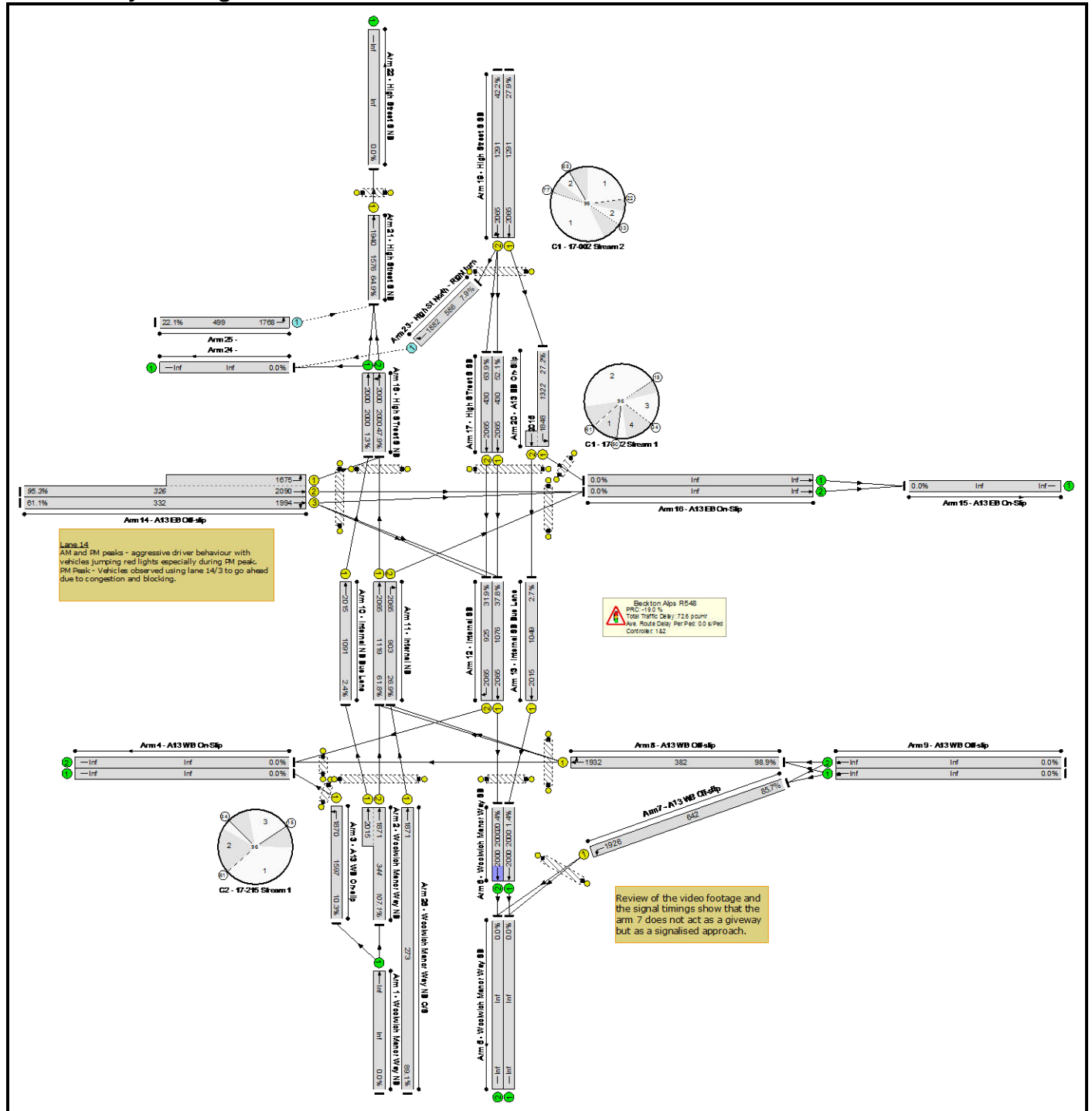


Basic Results Summary
Scenario 1: 'Multinode AM' (FG1: 'AM', Plan 1: '1234')
Network Layout Diagram

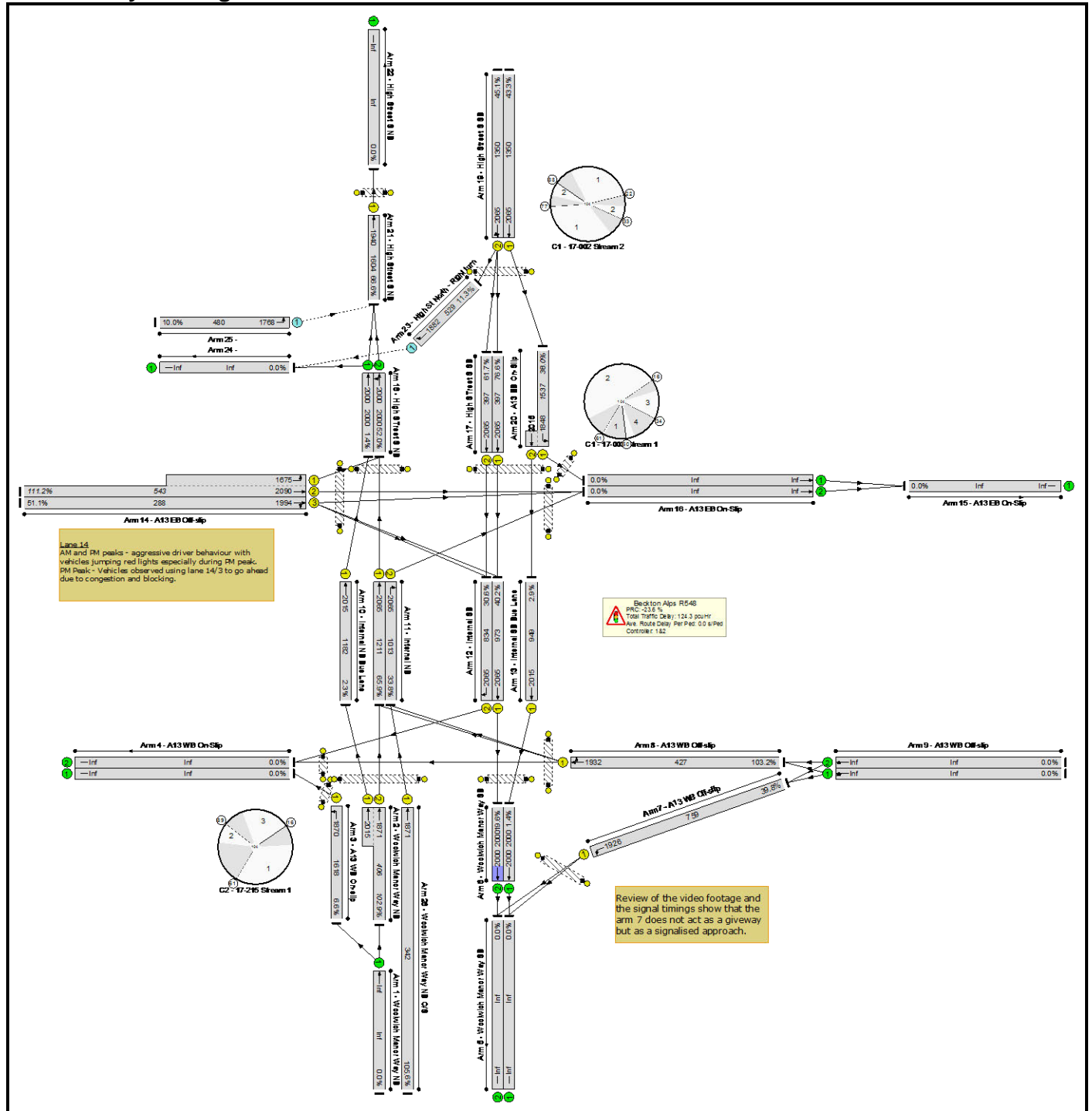


Basic Results Summary

Network Results

Item	Traffic Lane/Movement	Green Duration (s)	Traffic Flow	Traffic Capacity	Ratio flow/capacity (%)	Delay Per vehicle (s)	Average Queue length (vehicles)
Network	-	-	-	-	107.1%	-	-
Beckton Alps R548	-	-	-	-	107.1%	-	-
2/2+2/1	Woolwich Manor Way NB Ahead Ahead2	14	369	344	107.1%	217.6	27.9
3/1	A13 WB On-slip Left	78	165	1597	10.3%	2.4	0.7
6/1	Woolwich Manor Way SB Ahead	-	28	2000	1.4%	0.9	0.0
6/2	Woolwich Manor Way SB Ahead	-	407	2000	20.4%	1.1	0.2
7/1	A13 WB Off-slip Left	31	550	642	85.7%	48.3	16.4
8/1	A13 WB Off-slip Ahead Right	19	378	382	98.9%	121.1	18.7
10/1	Internal NB Bus Lane Ahead	51	28	1091	2.4%	1.7	0.0
11/1	Internal NB Ahead	51	714	1119	61.8%	9.0	2.8
11/2	Internal NB Right	41	243	903	26.9%	2.7	0.2
12/1	Internal SB Ahead	49	407	1076	37.8%	2.7	0.9
12/2	Internal SB Right	44	295	925	31.9%	4.4	0.5
13/1	Internal SB Bus Lane Ahead	49	28	1049	2.7%	1.8	0.0
14/2+14/1	A13 EB Off-slip Ahead Left	15	311	326	95.3%	105.6	12.8
14/3	A13 EB Off-slip Right Ahead	15	203	332	61.1%	50.9	5.8
17/1	High Street S SB Ahead	19	224	430	52.1%	37.8	5.8
17/2	High Street S SB Ahead	19	275	430	63.9%	41.6	7.5
18/1	High Street S NB Ahead	-	28	2000	1.3%	0.9	0.0
18/2	High Street S NB Ahead Left	-	980	2000	47.9%	1.7	0.5
19/1	High Street S SB Ahead	58	360	1291	27.9%	6.0	2.3
19/2	High Street S SB Ahead Right	58	545	1291	42.2%	7.0	4.0
20/1+20/2	A13 EB On-Slip Ahead Left	77:19	360	1322	27.2%	4.1	2.8
21/1	High Street S NB Ahead	77	1046	1576	64.9%	3.7	1.9
23/1	High St North - Right turn Ahead	-	46	586	7.9%	6.7	0.4
25/1	Left	-	110	499	22.1%	4.6	0.1
26/1	Woolwich Manor Way NB O/S Ahead	14	243	273	89.1%	89.6	9.7

Basic Results Summary
Scenario 2: 'Multinode PM' (FG2: 'PM', Plan 1: '1234')
Network Layout Diagram

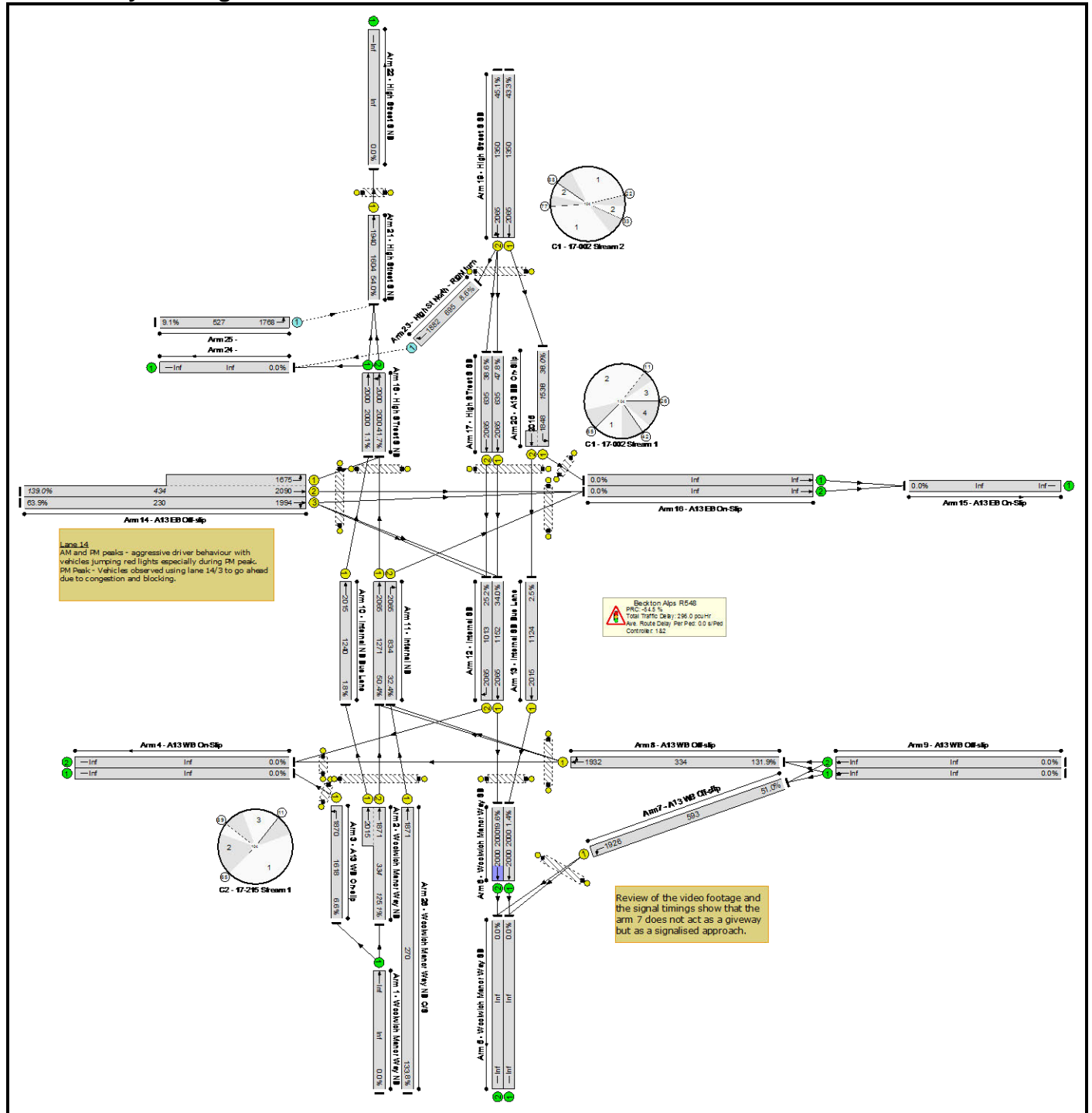


Basic Results Summary

Network Results

Item	Traffic Lane/Movement	Green Duration (s)	Traffic Flow	Traffic Capacity	Ratio flow/capacity (%)	Delay Per vehicle (s)	Average Queue length (vehicles)
Network	-	-	-	-	111.2%	-	-
Beckton Alps R548	-	-	-	-	111.2%	-	-
2/2+2/1	Woolwich Manor Way NB Ahead Ahead2	19	418	406	102.9%	160.8	25.7
3/1	A13 WB On-slip Left	86	107	1618	6.6%	2.2	0.5
6/1	Woolwich Manor Way SB Ahead	-	28	2000	1.4%	0.9	0.0
6/2	Woolwich Manor Way SB Ahead	-	391	2000	19.6%	1.2	0.2
7/1	A13 WB Off-slip Left	40	302	759	39.8%	26.6	6.5
8/1	A13 WB Off-slip Ahead Right	23	441	427	103.2%	165.0	27.6
10/1	Internal NB Bus Lane Ahead	60	28	1182	2.3%	1.6	0.0
11/1	Internal NB Ahead	60	823	1211	65.9%	8.3	3.1
11/2	Internal NB Right	50	361	1013	33.8%	2.7	0.3
12/1	Internal SB Ahead	48	391	973	40.2%	3.1	0.5
12/2	Internal SB Right	43	255	834	30.6%	4.9	0.5
13/1	Internal SB Bus Lane Ahead	48	28	949	2.9%	2.0	0.0
14/2+14/1	A13 EB Off-slip Ahead Left	14	604	543	111.2%	270.0	44.9
14/3	A13 EB Off-slip Right Ahead	14	147	288	51.1%	53.8	4.4
17/1	High Street S SB Ahead	19	304	397	76.6%	54.1	9.9
17/2	High Street S SB Ahead	19	245	397	61.7%	45.8	7.3
18/1	High Street S NB Ahead	-	28	2000	1.4%	0.9	0.0
18/2	High Street S NB Ahead Left	-	1118	2000	52.0%	1.9	0.5
19/1	High Street S SB Ahead	66	584	1350	43.3%	6.7	4.4
19/2	High Street S SB Ahead Right	66	609	1350	45.1%	6.9	4.6
20/1+20/2	A13 EB On-Slip Ahead Left	85:19	584	1537	38.0%	3.5	5.6
21/1	High Street S NB Ahead	85	1144	1604	66.6%	3.7	1.7
23/1	High St North - Right turn Ahead	-	60	529	11.3%	8.8	0.8
25/1	Left	-	48	480	10.0%	4.2	0.1
26/1	Woolwich Manor Way NB O/S Ahead	19	361	342	105.6%	203.0	26.4

Basic Results Summary
Scenario 3: 'SB Assist' (FG2: 'PM', Plan 1: '1234')
Network Layout Diagram

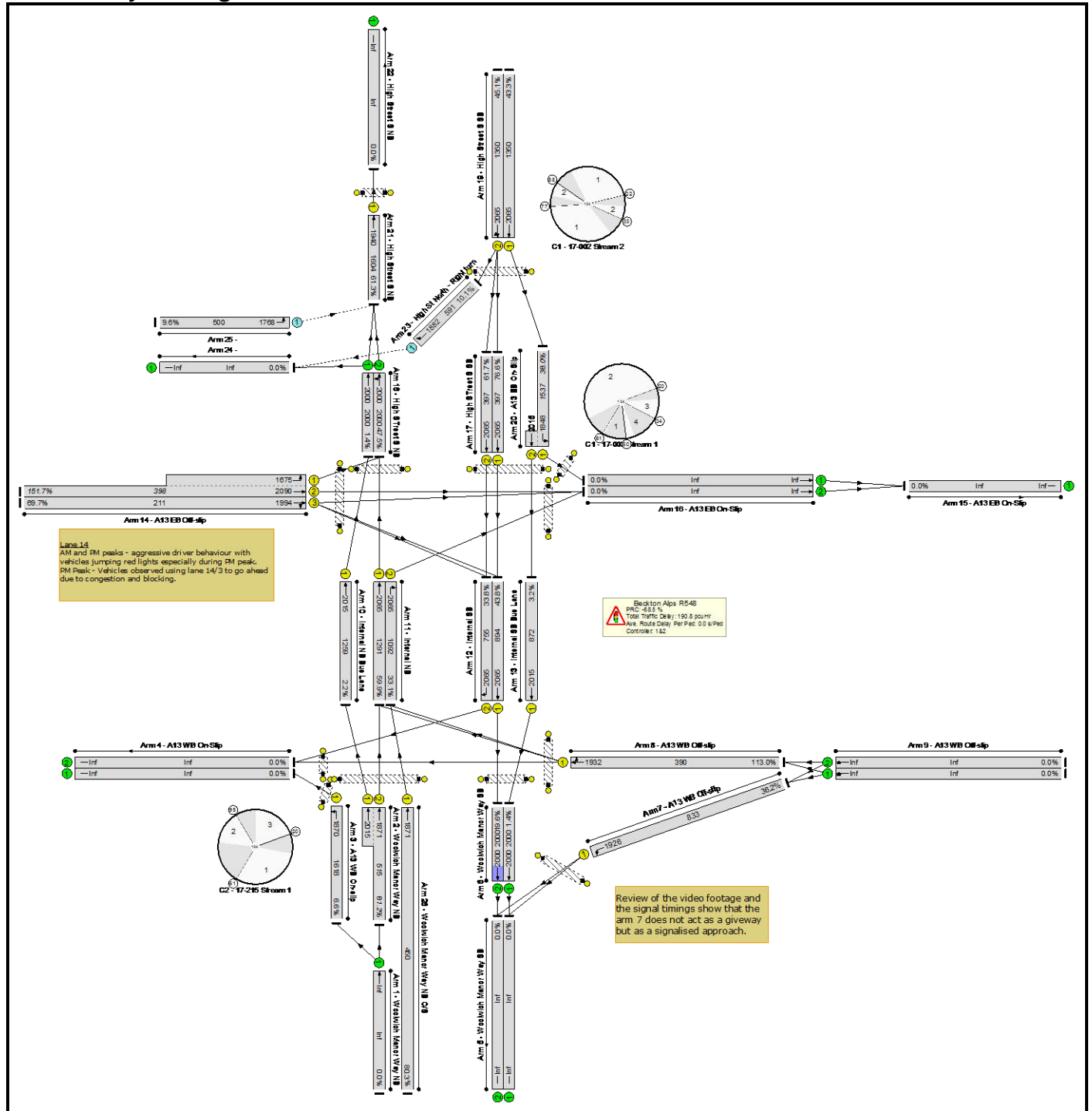


Basic Results Summary

Network Results

Item	Traffic Lane/Movement	Green Duration (s)	Traffic Flow	Traffic Capacity	Ratio flow/capacity (%)	Delay Per vehicle (s)	Average Queue length (vehicles)
Network	-	-	-	-	139.0%	-	-
Beckton Alps R548	-	-	-	-	139.0%	-	-
2/2+2/1	Woolwich Manor Way NB Ahead Ahead2	15	418	334	125.1%	458.5	60.2
3/1	A13 WB On-slip Left	86	107	1618	6.6%	2.2	0.5
6/1	Woolwich Manor Way SB Ahead	-	28	2000	1.4%	0.9	0.0
6/2	Woolwich Manor Way SB Ahead	-	391	2000	19.6%	1.1	0.2
7/1	A13 WB Off-slip Left	31	302	593	51.0%	35.7	7.6
8/1	A13 WB Off-slip Ahead Right	18	441	334	131.9%	543.6	72.5
10/1	Internal NB Bus Lane Ahead	63	28	1240	1.8%	1.5	0.0
11/1	Internal NB Ahead	63	823	1271	50.4%	7.4	2.6
11/2	Internal NB Right	41	361	834	32.4%	3.2	0.2
12/1	Internal SB Ahead	57	391	1152	34.0%	2.4	0.4
12/2	Internal SB Right	52	255	1013	25.2%	3.8	0.4
13/1	Internal SB Bus Lane Ahead	57	28	1124	2.5%	1.6	0.0
14/2+14/1	A13 EB Off-slip Ahead Left	11	604	434	139.0%	613.6	98.5
14/3	A13 EB Off-slip Right Ahead	11	147	230	63.9%	65.2	4.9
17/1	High Street S SB Ahead	31	304	635	47.8%	30.3	6.5
17/2	High Street S SB Ahead	31	245	635	38.6%	28.9	4.6
18/1	High Street S NB Ahead	-	28	2000	1.1%	0.9	0.0
18/2	High Street S NB Ahead Left	-	1118	2000	41.7%	1.5	0.4
19/1	High Street S SB Ahead	66	584	1350	43.3%	6.7	4.4
19/2	High Street S SB Ahead Right	66	609	1350	45.1%	6.9	4.6
20/1+20/2	A13 EB On-Slip Ahead Left	85:31	584	1538	38.0%	3.2	5.6
21/1	High Street S NB Ahead	85	1144	1604	54.0%	2.9	2.9
23/1	High St North - Right turn Ahead	-	60	695	8.6%	6.2	0.7
25/1	Left	-	48	527	9.1%	3.8	0.1
26/1	Woolwich Manor Way NB O/S Ahead	15	361	270	133.8%	565.7	62.3

Basic Results Summary
Scenario 4: 'NB Assist' (FG2: 'PM', Plan 1: '1234')
Network Layout Diagram

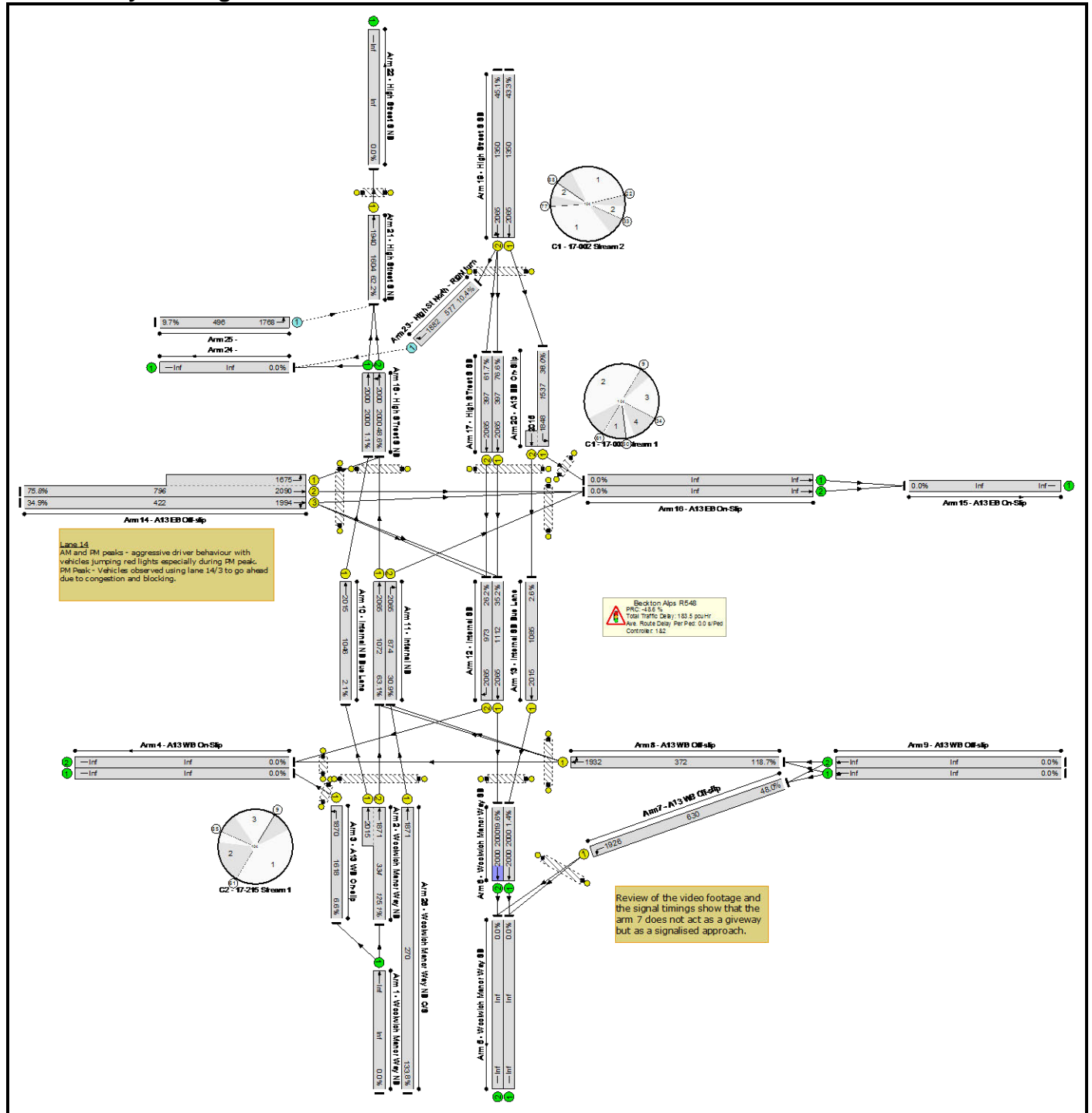


Basic Results Summary

Network Results

Item	Traffic Lane/Movement	Green Duration (s)	Traffic Flow	Traffic Capacity	Ratio flow/capacity (%)	Delay Per vehicle (s)	Average Queue length (vehicles)
Network	-	-	-	-	151.7%	-	-
Beckton Alps R548	-	-	-	-	151.7%	-	-
2/2+2/1	Woolwich Manor Way NB Ahead Ahead2	25	418	515	81.2%	53.1	13.0
3/1	A13 WB On-slip Left	86	107	1618	6.6%	2.2	0.5
6/1	Woolwich Manor Way SB Ahead	-	28	2000	1.4%	0.9	0.0
6/2	Woolwich Manor Way SB Ahead	-	391	2000	19.6%	1.2	0.2
7/1	A13 WB Off-slip Left	44	302	833	36.2%	23.2	6.1
8/1	A13 WB Off-slip Ahead Right	21	441	390	113.0%	302.6	43.4
10/1	Internal NB Bus Lane Ahead	64	28	1259	2.2%	1.5	0.0
11/1	Internal NB Ahead	64	823	1291	59.9%	7.2	2.9
11/2	Internal NB Right	54	361	1092	33.1%	2.5	0.2
12/1	Internal SB Ahead	44	391	894	43.8%	3.6	0.6
12/2	Internal SB Right	39	255	755	33.8%	5.5	0.5
13/1	Internal SB Bus Lane Ahead	44	28	872	3.2%	2.1	0.0
14/2+14/1	A13 EB Off-slip Ahead Left	10	604	398	151.7%	728.3	116.6
14/3	A13 EB Off-slip Right Ahead	10	147	211	69.7%	72.1	5.2
17/1	High Street S SB Ahead	19	304	397	76.6%	54.1	9.9
17/2	High Street S SB Ahead	19	245	397	61.7%	45.8	7.3
18/1	High Street S NB Ahead	-	28	2000	1.4%	0.9	0.0
18/2	High Street S NB Ahead Left	-	1118	2000	47.5%	1.7	0.5
19/1	High Street S SB Ahead	66	584	1350	43.3%	6.7	4.4
19/2	High Street S SB Ahead Right	66	609	1350	45.1%	6.9	4.6
20/1+20/2	A13 EB On-Slip Ahead Left	85:19	584	1537	38.0%	3.5	5.6
21/1	High Street S NB Ahead	85	1144	1604	61.3%	3.3	1.5
23/1	High St North - Right turn Ahead	-	60	591	10.1%	5.4	0.3
25/1	Left	-	48	500	9.6%	4.0	0.1
26/1	Woolwich Manor Way NB O/S Ahead	25	361	450	80.3%	56.6	11.7

Basic Results Summary
Scenario 5: 'EB Assist' (FG2: 'PM', Plan 1: '1234')
Network Layout Diagram

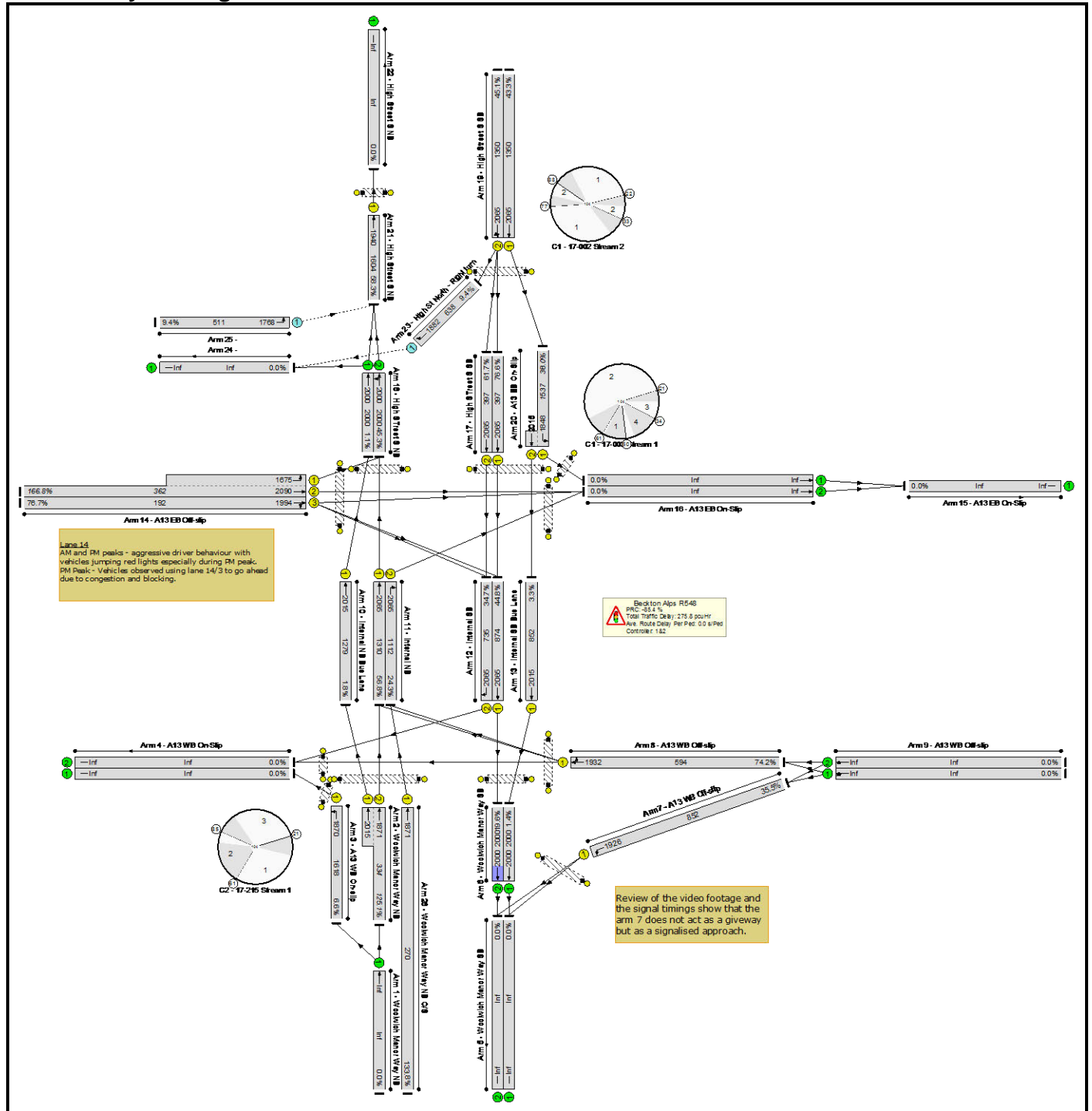


Basic Results Summary

Network Results

Item	Traffic Lane/Movement	Green Duration (s)	Traffic Flow	Traffic Capacity	Ratio flow/capacity (%)	Delay Per vehicle (s)	Average Queue length (vehicles)
Network	-	-	-	-	133.8%	-	-
Beckton Alps R548	-	-	-	-	133.8%	-	-
2/2+2/1	Woolwich Manor Way NB Ahead Ahead2	15	418	334	125.1%	455.3	59.7
3/1	A13 WB On-slip Left	86	107	1618	6.6%	2.2	0.5
6/1	Woolwich Manor Way SB Ahead	-	28	2000	1.4%	0.9	0.0
6/2	Woolwich Manor Way SB Ahead	-	391	2000	19.6%	1.2	0.2
7/1	A13 WB Off-slip Left	33	302	630	48.0%	33.4	7.4
8/1	A13 WB Off-slip Ahead Right	20	441	372	118.7%	381.9	52.9
10/1	Internal NB Bus Lane Ahead	53	28	1046	2.1%	1.8	0.0
11/1	Internal NB Ahead	53	823	1072	63.1%	9.9	3.0
11/2	Internal NB Right	43	361	874	30.9%	3.0	0.2
12/1	Internal SB Ahead	55	391	1112	35.2%	2.5	0.4
12/2	Internal SB Right	50	255	973	26.2%	4.1	0.4
13/1	Internal SB Bus Lane Ahead	55	28	1085	2.6%	1.7	0.0
14/2+14/1	A13 EB Off-slip Ahead Left	21	604	796	75.8%	47.8	9.8
14/3	A13 EB Off-slip Right Ahead	21	147	422	34.9%	41.5	3.9
17/1	High Street S SB Ahead	19	304	397	76.6%	54.1	9.9
17/2	High Street S SB Ahead	19	245	397	61.7%	45.8	7.3
18/1	High Street S NB Ahead	-	28	2000	1.1%	0.9	0.0
18/2	High Street S NB Ahead Left	-	1118	2000	48.6%	1.7	0.5
19/1	High Street S SB Ahead	66	584	1350	43.3%	6.7	4.4
19/2	High Street S SB Ahead Right	66	609	1350	45.1%	6.9	4.6
20/1+20/2	A13 EB On-Slip Ahead Left	85:19	584	1537	38.0%	3.5	5.6
21/1	High Street S NB Ahead	85	1144	1604	62.2%	3.1	1.2
23/1	High St North - Right turn Ahead	-	60	577	10.4%	7.4	0.6
25/1	Left	-	48	496	9.7%	4.0	0.1
26/1	Woolwich Manor Way NB O/S Ahead	15	361	270	133.8%	562.7	61.9

Basic Results Summary
Scenario 6: 'WB Assist' (FG2: 'PM', Plan 1: '1234')
Network Layout Diagram

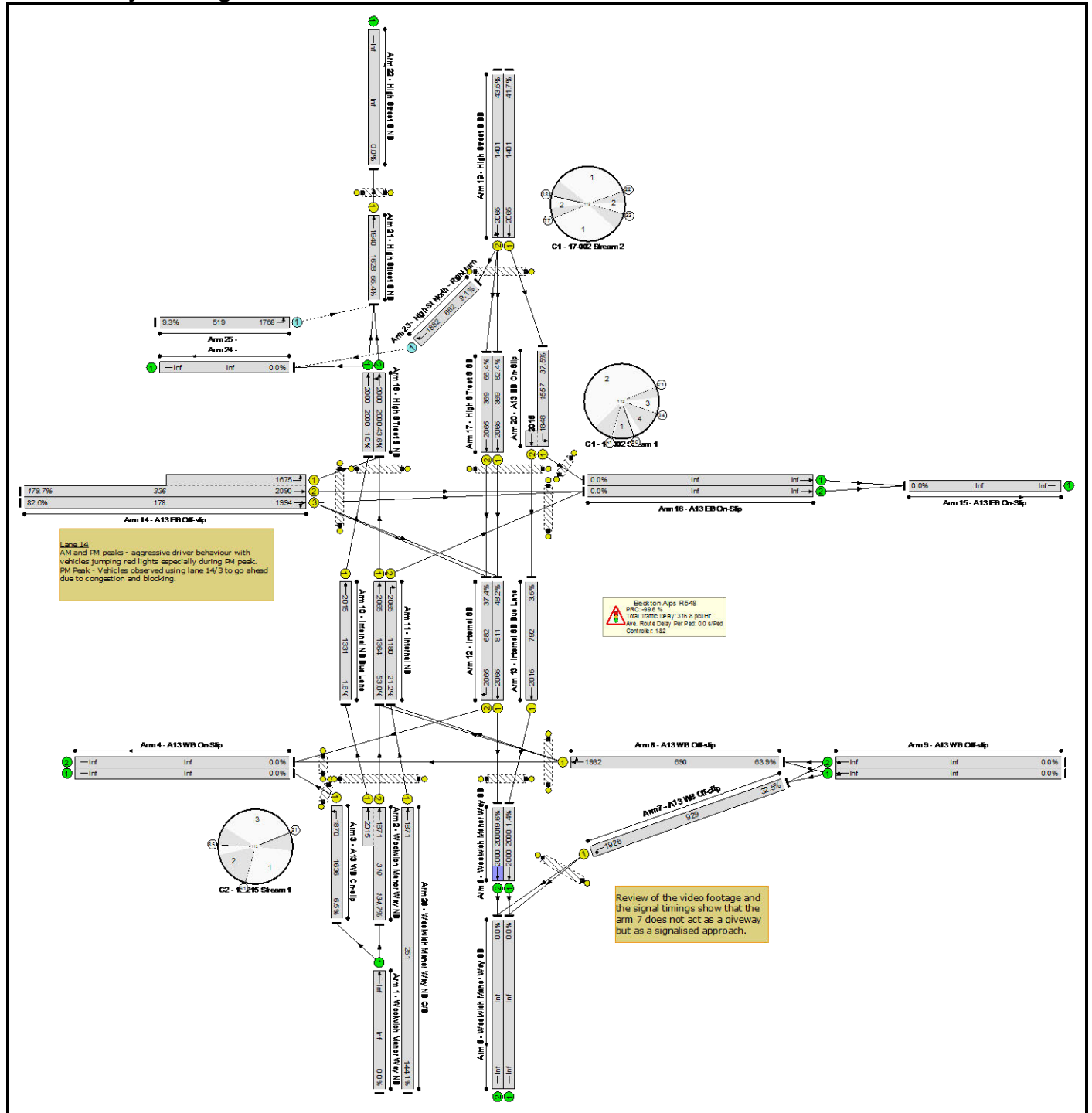


Basic Results Summary

Network Results

Item	Traffic Lane/Movement	Green Duration (s)	Traffic Flow	Traffic Capacity	Ratio flow/capacity (%)	Delay Per vehicle (s)	Average Queue length (vehicles)
Network	-	-	-	-	166.8%	-	-
Beckton Alps R548	-	-	-	-	166.8%	-	-
2/2+2/1	Woolwich Manor Way NB Ahead Ahead2	15	418	334	125.1%	455.3	59.7
3/1	A13 WB On-slip Left	86	107	1618	6.6%	2.2	0.5
6/1	Woolwich Manor Way SB Ahead	-	28	2000	1.4%	0.9	0.0
6/2	Woolwich Manor Way SB Ahead	-	391	2000	19.6%	1.2	0.2
7/1	A13 WB Off-slip Left	45	302	852	35.5%	22.5	6.0
8/1	A13 WB Off-slip Ahead Right	32	441	594	74.2%	43.8	12.8
10/1	Internal NB Bus Lane Ahead	65	28	1279	1.8%	1.4	0.0
11/1	Internal NB Ahead	65	823	1310	56.8%	4.0	1.1
11/2	Internal NB Right	55	361	1112	24.3%	2.1	0.2
12/1	Internal SB Ahead	43	391	874	44.8%	3.8	0.6
12/2	Internal SB Right	38	255	735	34.7%	5.7	0.5
13/1	Internal SB Bus Lane Ahead	43	28	852	3.3%	2.2	0.0
14/2+14/1	A13 EB Off-slip Ahead Left	9	604	362	166.8%	845.8	135.4
14/3	A13 EB Off-slip Right Ahead	9	147	192	76.7%	83.5	5.7
17/1	High Street S SB Ahead	19	304	397	76.6%	54.1	9.9
17/2	High Street S SB Ahead	19	245	397	61.7%	45.8	7.3
18/1	High Street S NB Ahead	-	28	2000	1.1%	0.9	0.0
18/2	High Street S NB Ahead Left	-	1118	2000	45.3%	1.6	0.4
19/1	High Street S SB Ahead	66	584	1350	43.3%	6.7	4.4
19/2	High Street S SB Ahead Right	66	609	1350	45.1%	6.9	4.6
20/1+20/2	A13 EB On-Slip Ahead Left	85:19	584	1537	38.0%	3.5	5.6
21/1	High Street S NB Ahead	85	1144	1604	58.3%	3.1	1.4
23/1	High St North - Right turn Ahead	-	60	638	9.4%	8.5	0.7
25/1	Left	-	48	511	9.4%	3.9	0.1
26/1	Woolwich Manor Way NB O/S Ahead	15	361	270	133.8%	562.7	61.9

Basic Results Summary
Scenario 7: 'WB Assist Severe' (FG2: 'PM', Plan 1: '1234')
Network Layout Diagram

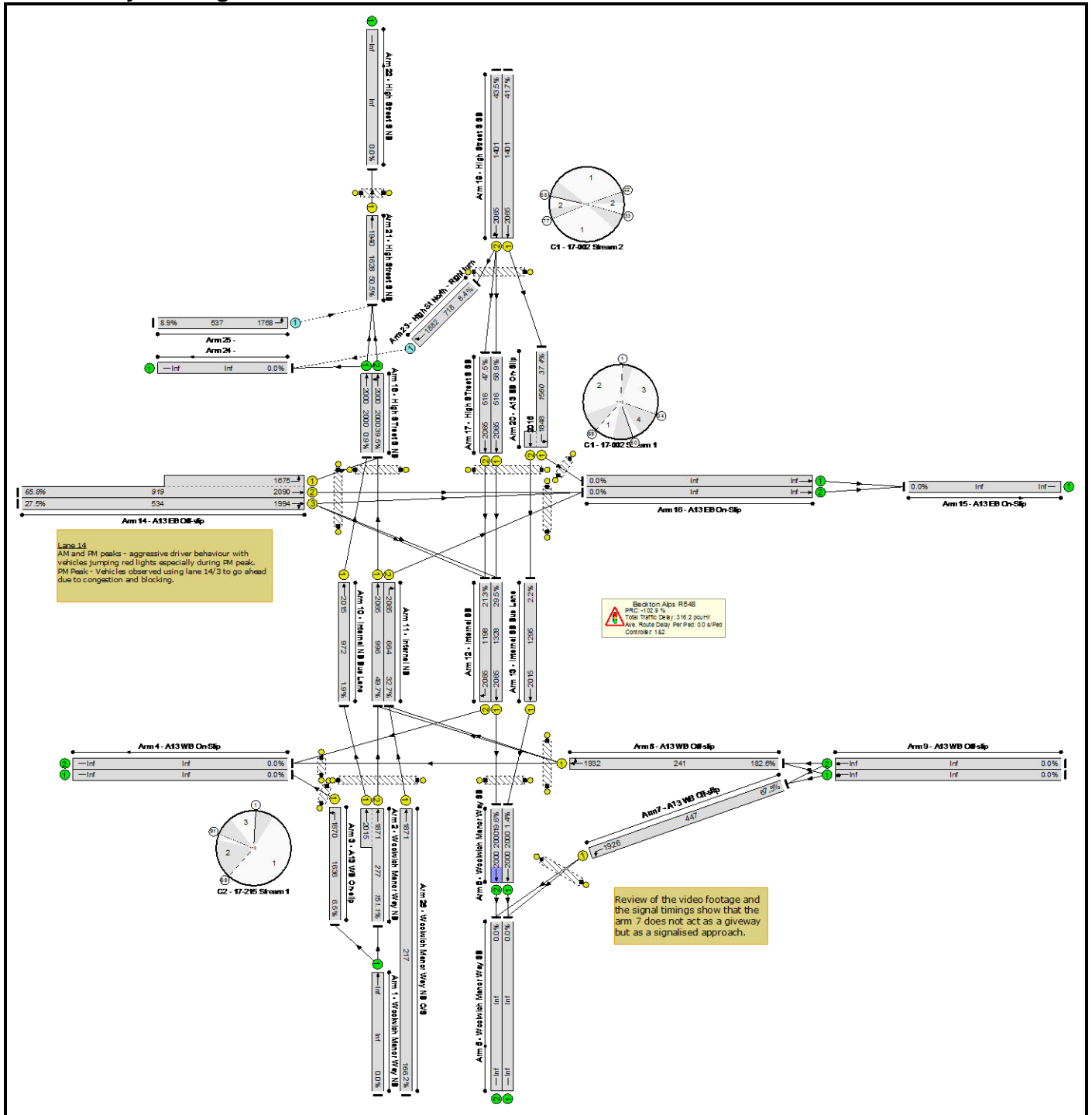


Basic Results Summary

Network Results

Item	Traffic Lane/Movement	Green Duration (s)	Traffic Flow	Traffic Capacity	Ratio flow/capacity (%)	Delay Per vehicle (s)	Average Queue length (vehicles)
Network	-	-	-	-	179.7%	-	-
Beckton Alps R548	-	-	-	-	179.7%	-	-
2/2+2/1	Woolwich Manor Way NB Ahead Ahead2	15	418	310	134.7%	569.1	73.0
3/1	A13 WB On-slip Left	94	107	1636	6.5%	2.1	0.5
6/1	Woolwich Manor Way SB Ahead	-	28	2000	1.4%	0.9	0.0
6/2	Woolwich Manor Way SB Ahead	-	391	2000	19.6%	1.2	0.3
7/1	A13 WB Off-slip Left	53	302	929	32.5%	20.7	5.9
8/1	A13 WB Off-slip Ahead Right	40	441	690	63.9%	37.2	12.3
10/1	Internal NB Bus Lane Ahead	73	28	1331	1.6%	1.4	0.0
11/1	Internal NB Ahead	73	823	1364	53.0%	3.6	1.0
11/2	Internal NB Right	63	361	1180	21.2%	1.9	0.1
12/1	Internal SB Ahead	43	391	811	48.2%	4.3	0.6
12/2	Internal SB Right	38	255	682	37.4%	6.3	0.5
13/1	Internal SB Bus Lane Ahead	43	28	792	3.5%	2.4	0.0
14/2+14/1	A13 EB Off-slip Ahead Left	9	604	336	179.7%	940.8	150.2
14/3	A13 EB Off-slip Right Ahead	9	147	178	82.6%	101.3	6.6
17/1	High Street S SB Ahead	19	304	369	82.4%	66.2	11.2
17/2	High Street S SB Ahead	19	245	369	66.4%	53.1	8.0
18/1	High Street S NB Ahead	-	28	2000	1.0%	0.9	0.0
18/2	High Street S NB Ahead Left	-	1118	2000	43.6%	1.6	0.4
19/1	High Street S SB Ahead	74	584	1401	41.7%	6.2	4.4
19/2	High Street S SB Ahead Right	74	609	1401	43.5%	6.4	4.6
20/1+20/2	A13 EB On-Slip Ahead Left	93:19	584	1557	37.5%	3.7	5.5
21/1	High Street S NB Ahead	93	1144	1628	55.4%	2.8	1.4
23/1	High St North - Right turn Ahead	-	60	662	9.1%	8.0	0.7
25/1	Left	-	48	519	9.3%	3.8	0.1
26/1	Woolwich Manor Way NB O/S Ahead	15	361	251	144.1%	671.3	72.8

Basic Results Summary
Scenario 8: 'EB Assist Severe' (FG2: 'PM', Plan 1: '1234')
Network Layout Diagram

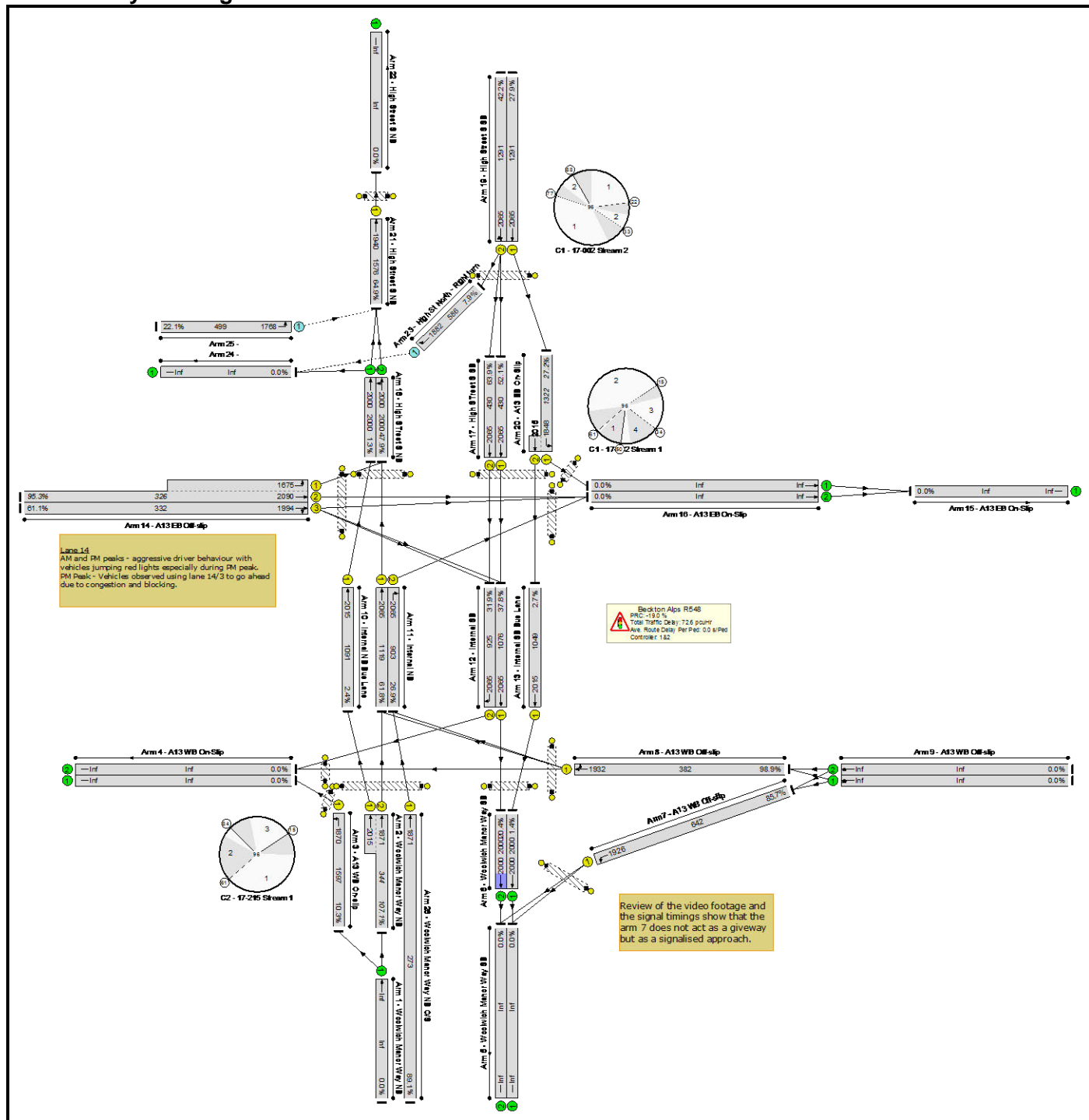


Basic Results Summary

Network Results

Item	Traffic Lane/Movement	Green Duration (s)	Traffic Flow	Traffic Capacity	Ratio flow/capacity (%)	Delay Per vehicle (s)	Average Queue length (vehicles)
Network	-	-	-	-	182.6%	-	-
Beckton Alps R548	-	-	-	-	182.6%	-	-
2/2+2/1	Woolwich Manor Way NB Ahead Ahead2	13	418	277	151.1%	734.8	92.1
3/1	A13 WB On-slip Left	94	107	1636	6.5%	2.1	0.5
6/1	Woolwich Manor Way SB Ahead	-	28	2000	1.4%	0.9	0.0
6/2	Woolwich Manor Way SB Ahead	-	391	2000	19.6%	1.2	0.2
7/1	A13 WB Off-slip Left	25	302	447	67.5%	51.4	9.5
8/1	A13 WB Off-slip Ahead Right	14	441	241	182.6%	975.1	126.5
10/1	Internal NB Bus Lane Ahead	53	28	972	1.9%	1.9	0.0
11/1	Internal NB Ahead	53	823	996	49.7%	11.6	2.6
11/2	Internal NB Right	35	361	664	32.7%	4.0	0.2
12/1	Internal SB Ahead	71	391	1328	29.5%	1.9	0.4
12/2	Internal SB Right	66	255	1198	21.3%	3.1	0.4
13/1	Internal SB Bus Lane Ahead	71	28	1295	2.2%	1.4	0.0
14/2+14/1	A13 EB Off-slip Ahead Left	29	604	919	65.8%	41.5	9.2
14/3	A13 EB Off-slip Right Ahead	29	147	534	27.5%	37.1	3.8
17/1	High Street S SB Ahead	27	304	516	58.9%	41.3	9.0
17/2	High Street S SB Ahead	27	245	516	47.5%	38.3	6.9
18/1	High Street S NB Ahead	-	28	2000	0.9%	0.9	0.0
18/2	High Street S NB Ahead Left	-	1118	2000	39.5%	1.5	0.3
19/1	High Street S SB Ahead	74	584	1401	41.7%	6.2	4.4
19/2	High Street S SB Ahead Right	74	609	1401	43.5%	6.4	4.6
20/1+20/2	A13 EB On-Slip Ahead Left	93:27	584	1560	37.4%	3.4	5.5
21/1	High Street S NB Ahead	93	1144	1628	50.5%	2.4	0.8
23/1	High St North - Right turn Ahead	-	60	718	8.4%	6.5	0.7
25/1	Left	-	48	537	8.9%	3.7	0.0
26/1	Woolwich Manor Way NB O/S Ahead	13	361	217	166.2%	862.0	91.8

Basic Results Summary
Scenario 9: 'ATM Level 1' (FG1: 'AM', Plan 1: '1234')
Network Layout Diagram

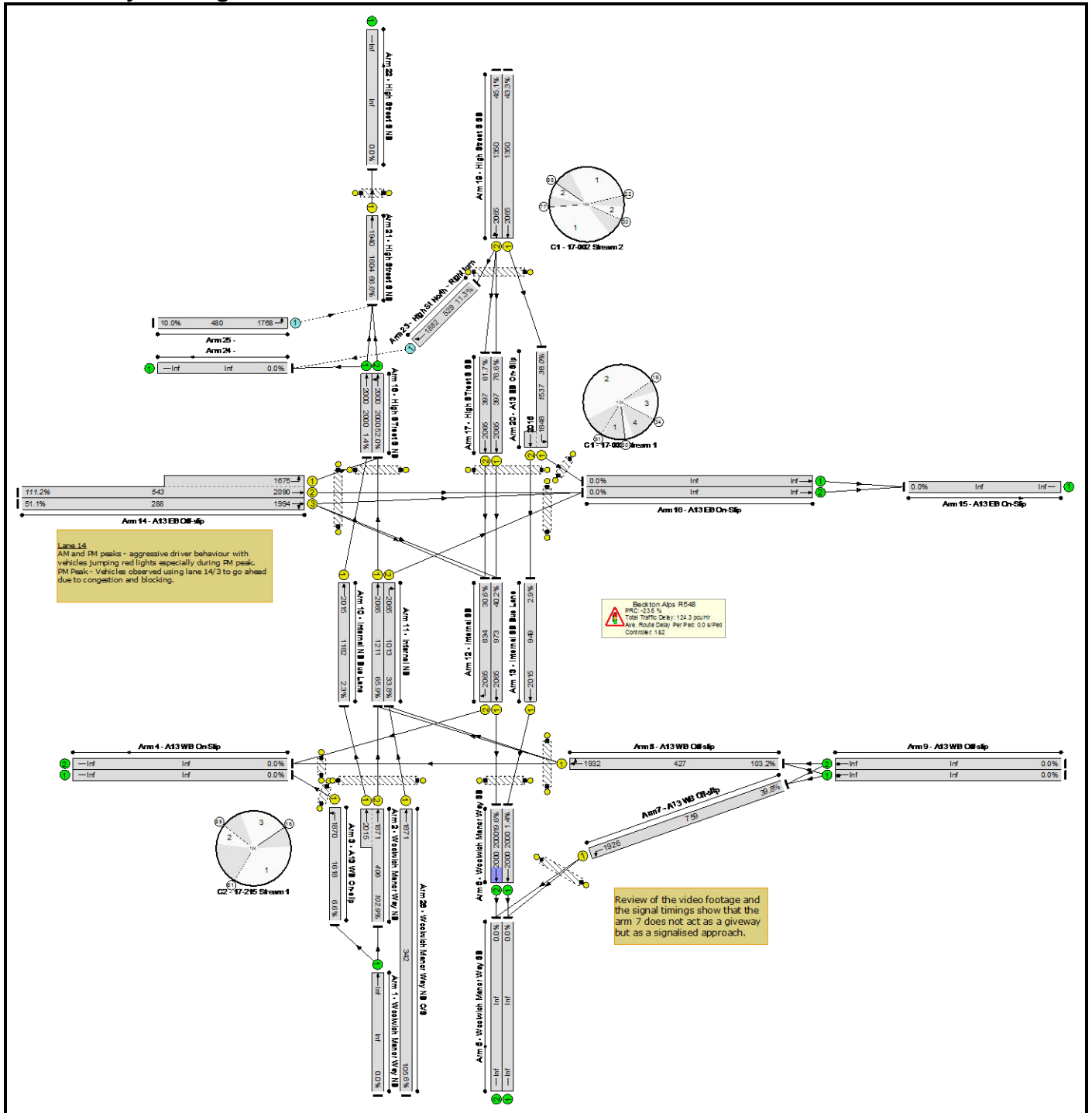


Basic Results Summary

Network Results

Item	Traffic Lane/Movement	Green Duration (s)	Traffic Flow	Traffic Capacity	Ratio flow/capacity (%)	Delay Per vehicle (s)	Average Queue length (vehicles)
Network	-	-	-	-	107.1%	-	-
Beckton Alps R548	-	-	-	-	107.1%	-	-
2/2+2/1	Woolwich Manor Way NB Ahead Ahead2	14	369	344	107.1%	217.6	27.9
3/1	A13 WB On-slip Left	78	165	1597	10.3%	2.4	0.7
6/1	Woolwich Manor Way SB Ahead	-	28	2000	1.4%	0.9	0.0
6/2	Woolwich Manor Way SB Ahead	-	407	2000	20.4%	1.1	0.2
7/1	A13 WB Off-slip Left	31	550	642	85.7%	48.3	16.4
8/1	A13 WB Off-slip Ahead Right	19	378	382	98.9%	121.1	18.7
10/1	Internal NB Bus Lane Ahead	51	28	1091	2.4%	1.7	0.0
11/1	Internal NB Ahead	51	714	1119	61.8%	9.0	2.8
11/2	Internal NB Right	41	243	903	26.9%	2.7	0.2
12/1	Internal SB Ahead	49	407	1076	37.8%	2.7	0.9
12/2	Internal SB Right	44	295	925	31.9%	4.4	0.5
13/1	Internal SB Bus Lane Ahead	49	28	1049	2.7%	1.8	0.0
14/2+14/1	A13 EB Off-slip Ahead Left	15	311	326	95.3%	105.6	12.8
14/3	A13 EB Off-slip Right Ahead	15	203	332	61.1%	50.9	5.8
17/1	High Street S SB Ahead	19	224	430	52.1%	37.8	5.8
17/2	High Street S SB Ahead	19	275	430	63.9%	41.6	7.5
18/1	High Street S NB Ahead	-	28	2000	1.3%	0.9	0.0
18/2	High Street S NB Ahead Left	-	980	2000	47.9%	1.7	0.5
19/1	High Street S SB Ahead	58	360	1291	27.9%	6.0	2.3
19/2	High Street S SB Ahead Right	58	545	1291	42.2%	7.0	4.0
20/1+20/2	A13 EB On-Slip Ahead Left	77:19	360	1322	27.2%	4.1	2.8
21/1	High Street S NB Ahead	77	1046	1576	64.9%	3.7	1.9
23/1	High St North - Right turn Ahead	-	46	586	7.9%	6.7	0.4
25/1	Left	-	110	499	22.1%	4.6	0.1
26/1	Woolwich Manor Way NB O/S Ahead	14	243	273	89.1%	89.6	9.7

Basic Results Summary
Scenario 10: 'ATM Level 2' (FG2: 'PM', Plan 1: '1234')
Network Layout Diagram

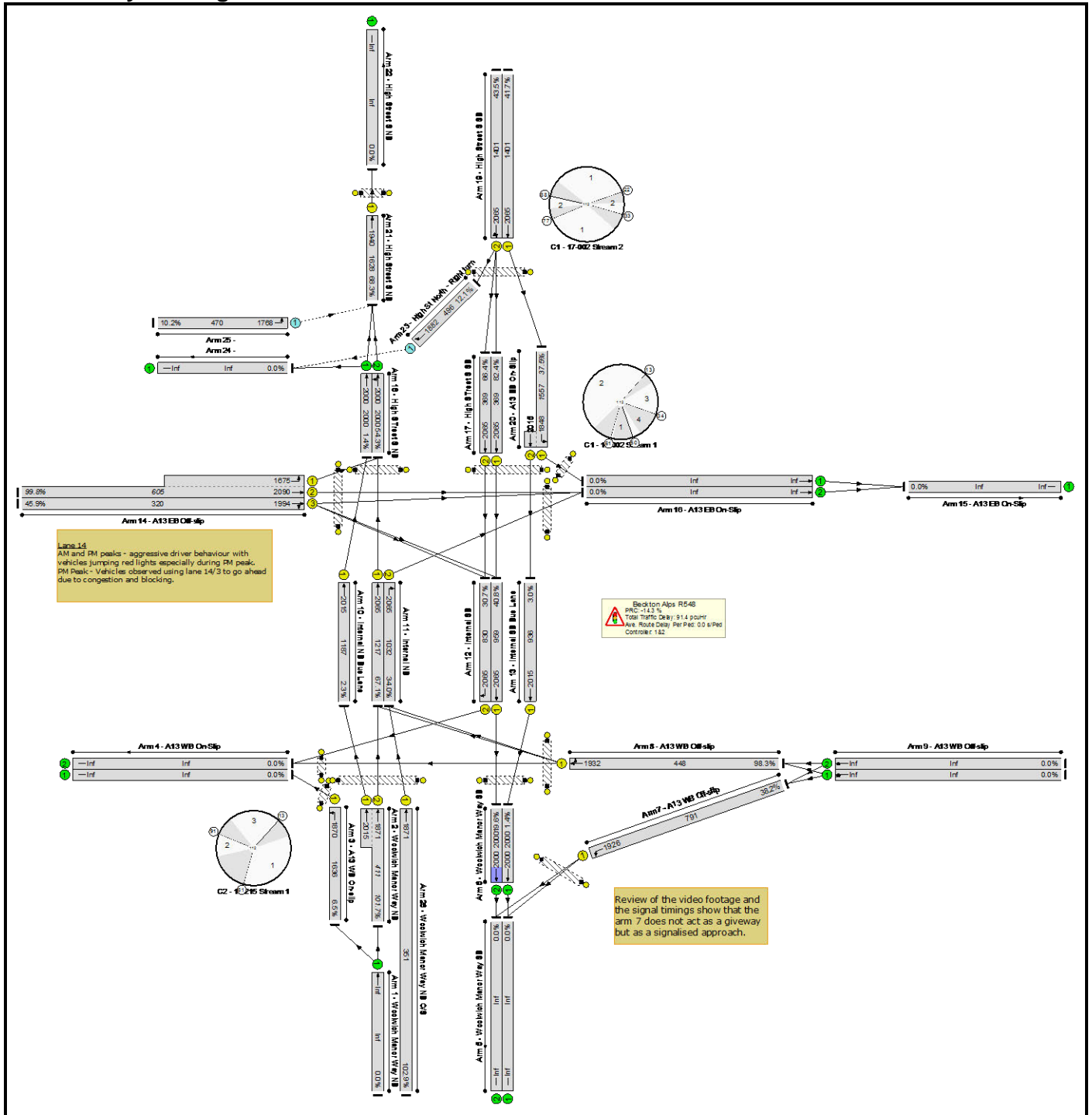


Basic Results Summary

Network Results

Item	Traffic Lane/Movement	Green Duration (s)	Traffic Flow	Traffic Capacity	Ratio flow/capacity (%)	Delay Per vehicle (s)	Average Queue length (vehicles)
Network	-	-	-	-	111.2%	-	-
Beckton Alps R548	-	-	-	-	111.2%	-	-
2/2+2/1	Woolwich Manor Way NB Ahead Ahead2	19	418	406	102.9%	160.8	25.7
3/1	A13 WB On-slip Left	86	107	1618	6.6%	2.2	0.5
6/1	Woolwich Manor Way SB Ahead	-	28	2000	1.4%	0.9	0.0
6/2	Woolwich Manor Way SB Ahead	-	391	2000	19.6%	1.2	0.2
7/1	A13 WB Off-slip Left	40	302	759	39.8%	26.6	6.5
8/1	A13 WB Off-slip Ahead Right	23	441	427	103.2%	165.0	27.6
10/1	Internal NB Bus Lane Ahead	60	28	1182	2.3%	1.6	0.0
11/1	Internal NB Ahead	60	823	1211	65.9%	8.3	3.1
11/2	Internal NB Right	50	361	1013	33.8%	2.7	0.3
12/1	Internal SB Ahead	48	391	973	40.2%	3.1	0.5
12/2	Internal SB Right	43	255	834	30.6%	4.9	0.5
13/1	Internal SB Bus Lane Ahead	48	28	949	2.9%	2.0	0.0
14/2+14/1	A13 EB Off-slip Ahead Left	14	604	543	111.2%	270.0	44.9
14/3	A13 EB Off-slip Right Ahead	14	147	288	51.1%	53.8	4.4
17/1	High Street S SB Ahead	19	304	397	76.6%	54.1	9.9
17/2	High Street S SB Ahead	19	245	397	61.7%	45.8	7.3
18/1	High Street S NB Ahead	-	28	2000	1.4%	0.9	0.0
18/2	High Street S NB Ahead Left	-	1118	2000	52.0%	1.9	0.5
19/1	High Street S SB Ahead	66	584	1350	43.3%	6.7	4.4
19/2	High Street S SB Ahead Right	66	609	1350	45.1%	6.9	4.6
20/1+20/2	A13 EB On-Slip Ahead Left	85:19	584	1537	38.0%	3.5	5.6
21/1	High Street S NB Ahead	85	1144	1604	66.6%	3.7	1.7
23/1	High St North - Right turn Ahead	-	60	529	11.3%	8.8	0.8
25/1	Left	-	48	480	10.0%	4.2	0.1
26/1	Woolwich Manor Way NB O/S Ahead	19	361	342	105.6%	203.0	26.4

Basic Results Summary
Scenario 11: 'ATM Level 3' (FG2: 'PM', Plan 1: '1234')
Network Layout Diagram



Basic Results Summary

Network Results

Item	Traffic Lane/Movement	Green Duration (s)	Traffic Flow	Traffic Capacity	Ratio flow/capacity (%)	Delay Per vehicle (s)	Average Queue length (vehicles)
Network	-	-	-	-	102.9%	-	-
Beckton Alps R548	-	-	-	-	102.9%	-	-
2/2+2/1	Woolwich Manor Way NB Ahead Ahead2	21	418	411	101.7%	150.8	25.1
3/1	A13 WB On-slip Left	94	107	1636	6.5%	2.1	0.5
6/1	Woolwich Manor Way SB Ahead	-	28	2000	1.4%	0.9	0.0
6/2	Woolwich Manor Way SB Ahead	-	391	2000	19.6%	1.2	0.3
7/1	A13 WB Off-slip Left	45	302	791	38.2%	26.7	6.9
8/1	A13 WB Off-slip Ahead Right	26	441	448	98.3%	114.6	22.4
10/1	Internal NB Bus Lane Ahead	65	28	1187	2.3%	1.6	0.0
11/1	Internal NB Ahead	65	823	1217	67.1%	7.9	2.9
11/2	Internal NB Right	55	361	1032	34.0%	2.6	0.3
12/1	Internal SB Ahead	51	391	959	40.8%	3.2	0.5
12/2	Internal SB Right	46	255	830	30.7%	5.0	0.5
13/1	Internal SB Bus Lane Ahead	51	28	936	3.0%	2.0	0.0
14/2+14/1	A13 EB Off-slip Ahead Left	17	604	605	99.8%	126.6	22.0
14/3	A13 EB Off-slip Right Ahead	17	147	320	45.9%	52.9	4.5
17/1	High Street S SB Ahead	19	304	369	82.4%	66.2	11.2
17/2	High Street S SB Ahead	19	245	369	66.4%	53.1	8.0
18/1	High Street S NB Ahead	-	28	2000	1.4%	0.9	0.0
18/2	High Street S NB Ahead Left	-	1118	2000	54.3%	2.0	0.6
19/1	High Street S SB Ahead	74	584	1401	41.7%	6.2	4.4
19/2	High Street S SB Ahead Right	74	609	1401	43.5%	6.4	4.6
20/1+20/2	A13 EB On-Slip Ahead Left	93:19	584	1557	37.5%	3.7	5.5
21/1	High Street S NB Ahead	93	1144	1628	68.3%	3.8	1.8
23/1	High St North - Right turn Ahead	-	60	496	12.1%	10.6	0.9
25/1	Left	-	48	470	10.2%	4.3	0.1
26/1	Woolwich Manor Way NB O/S Ahead	21	361	351	102.9%	172.9	23.9