

# Employment & Regeneration in LB Enfield



September 2015



# Introduction



# Aims



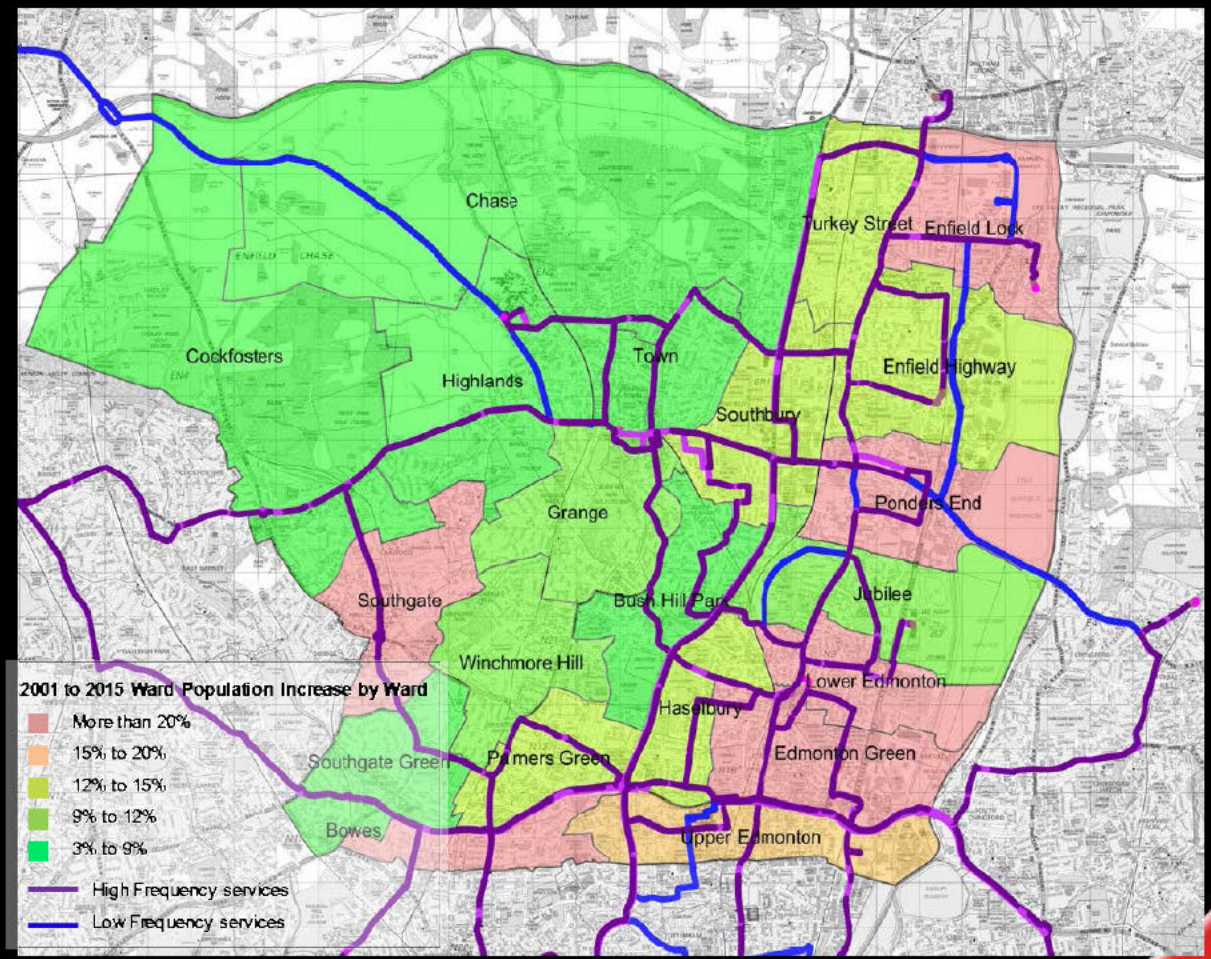
# Approach to Study



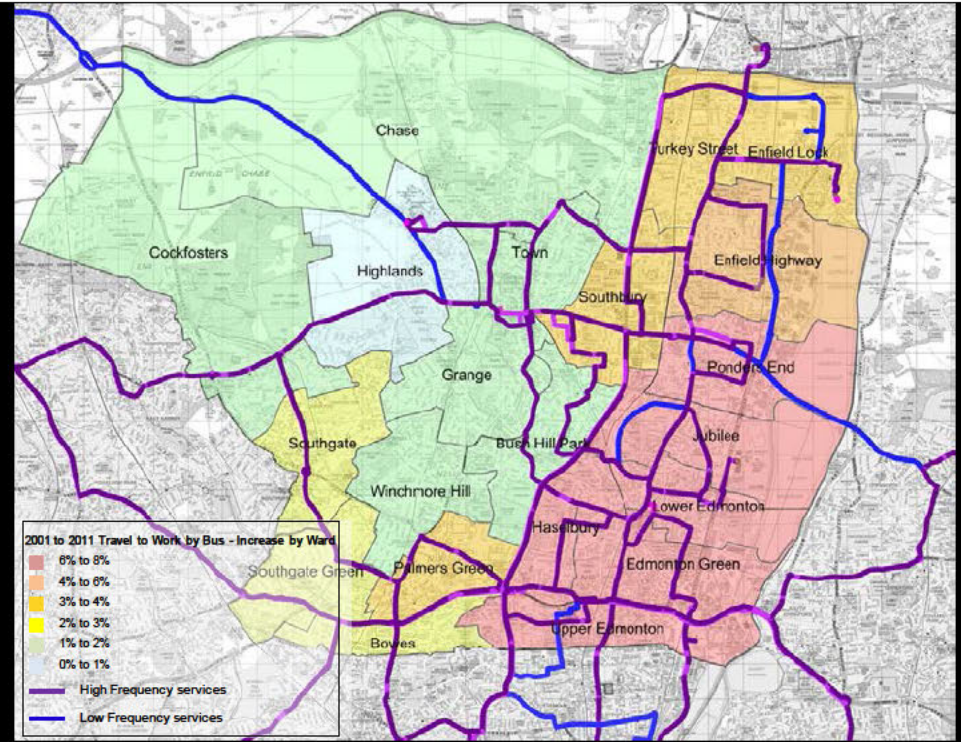
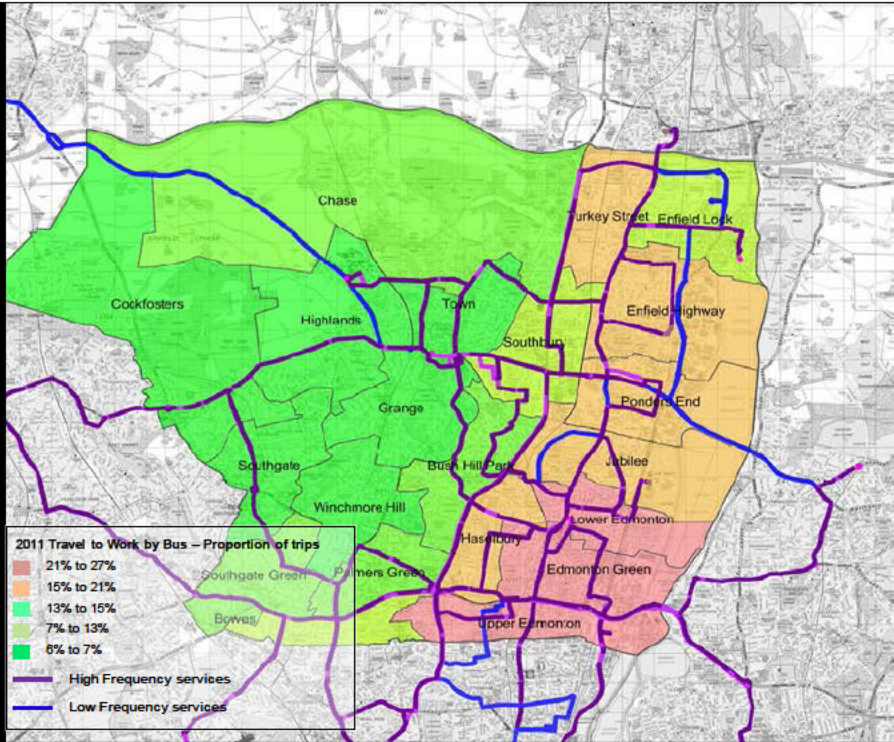
# Methodology



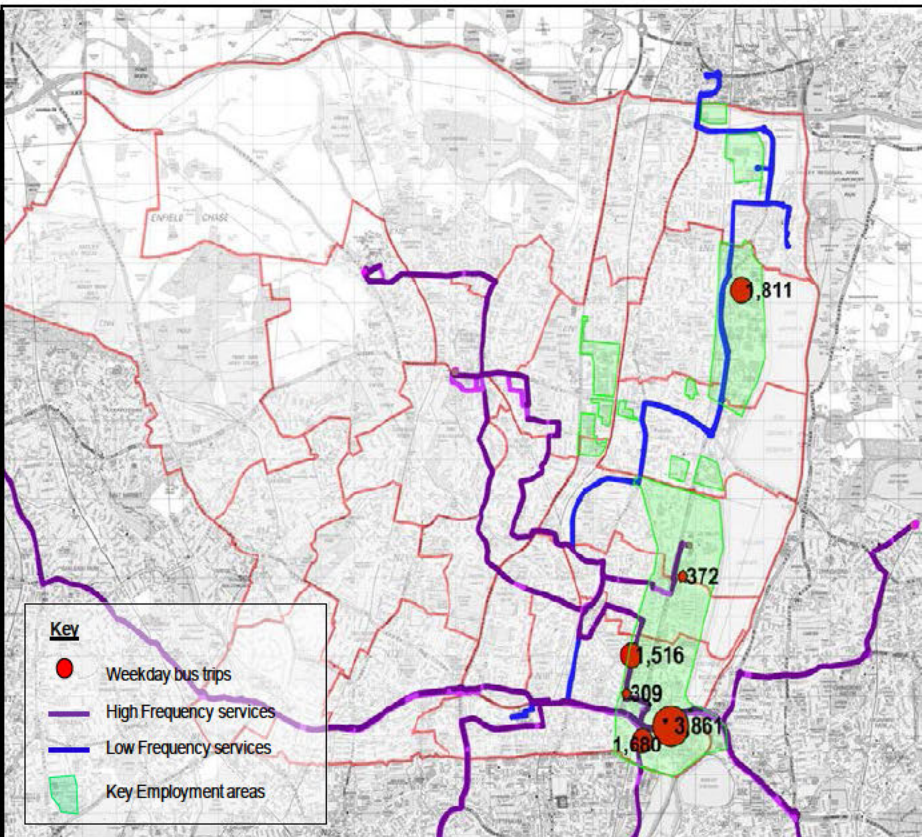
# Population Growth



# Travel to Work

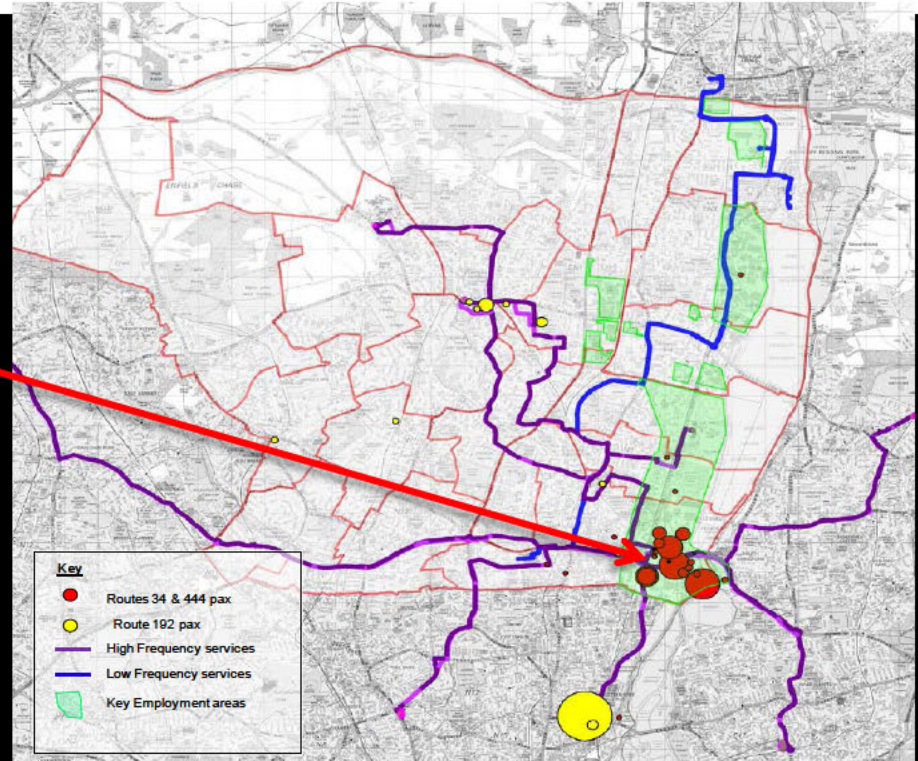
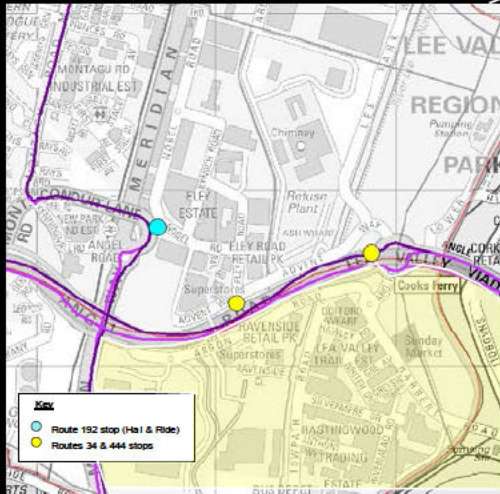


# Access to Employment

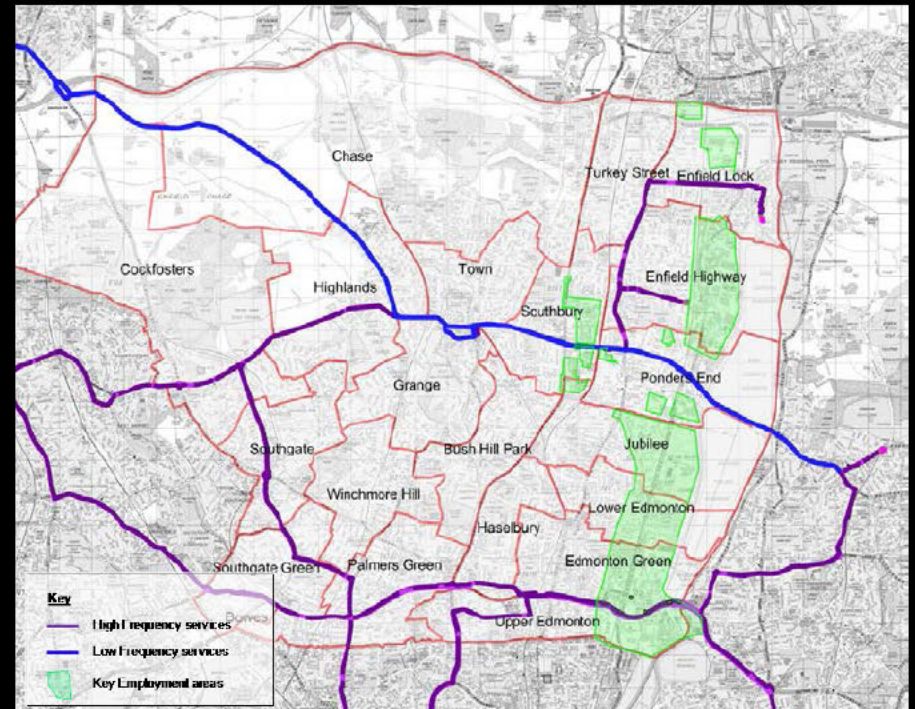




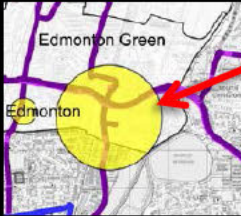
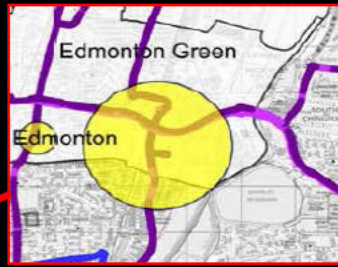
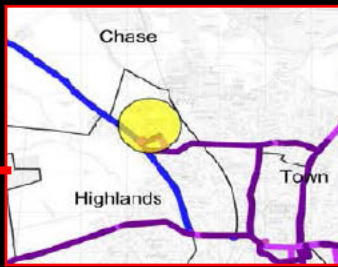
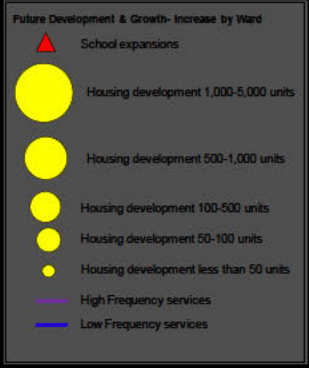
# Access to Employment



# Network Coverage and Limitations



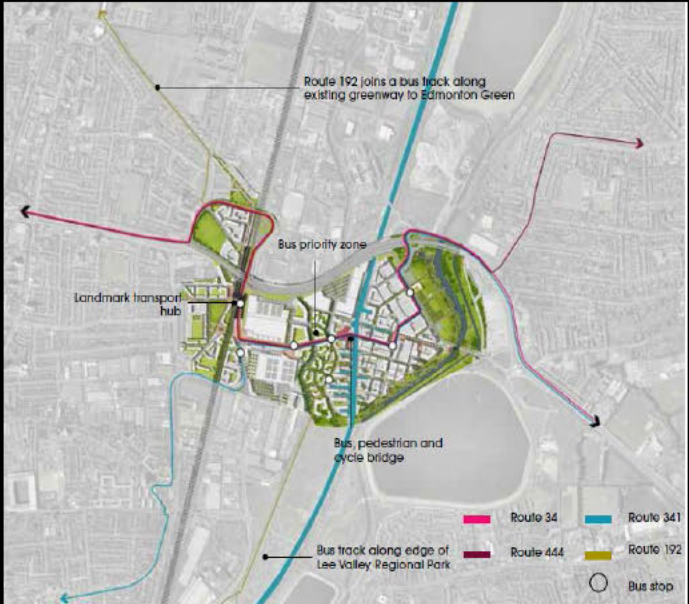
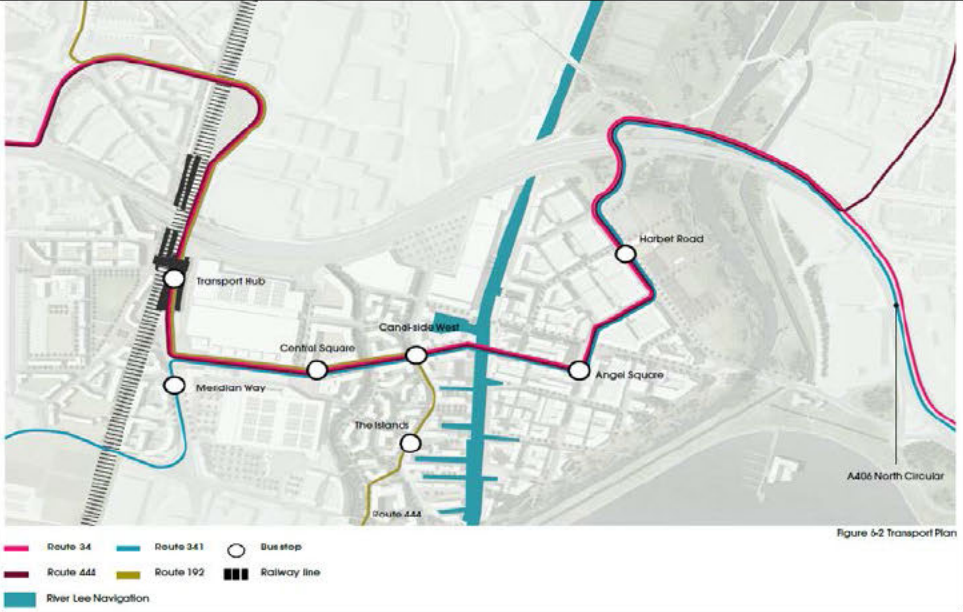
# Committed Development



# Key Development Site - Meridian Water

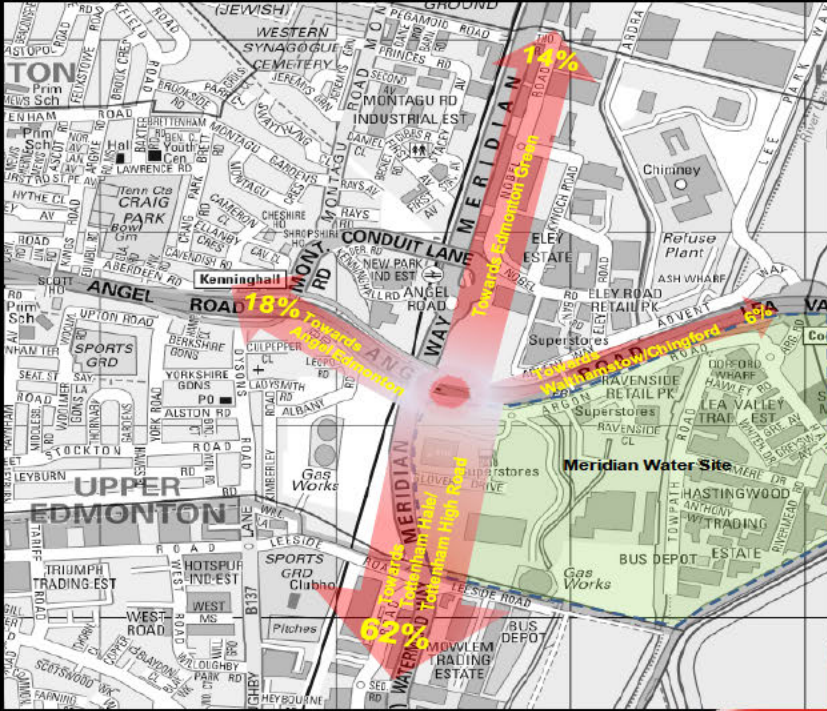


# Key Development Site - Meridian Water

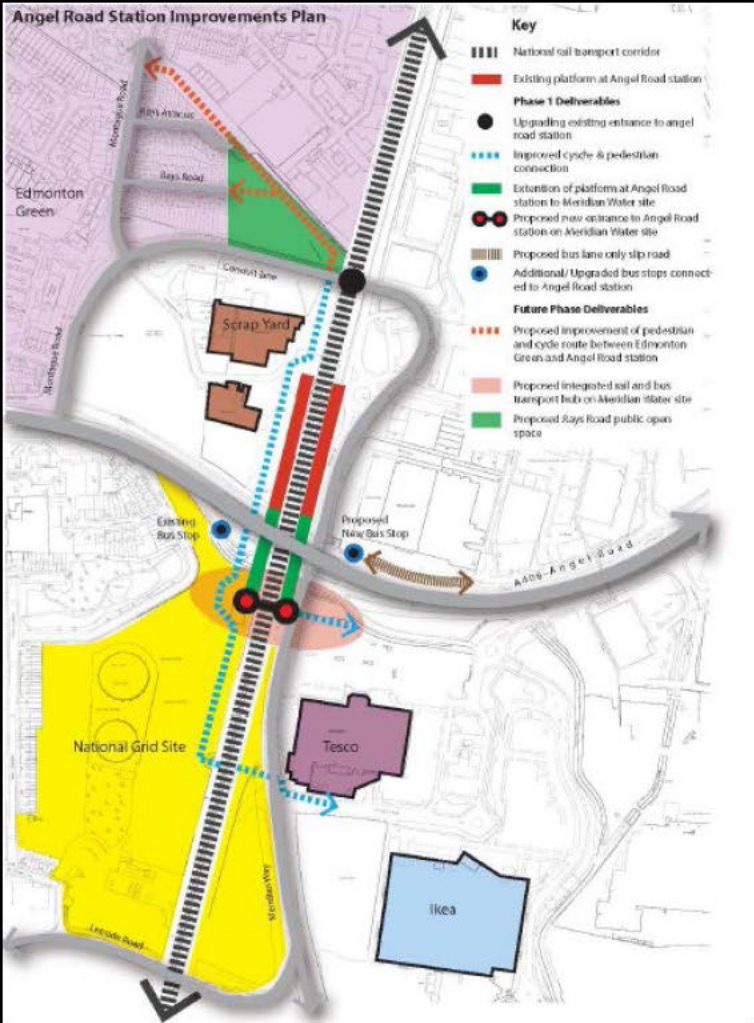


# Key Development Site - Meridian Water

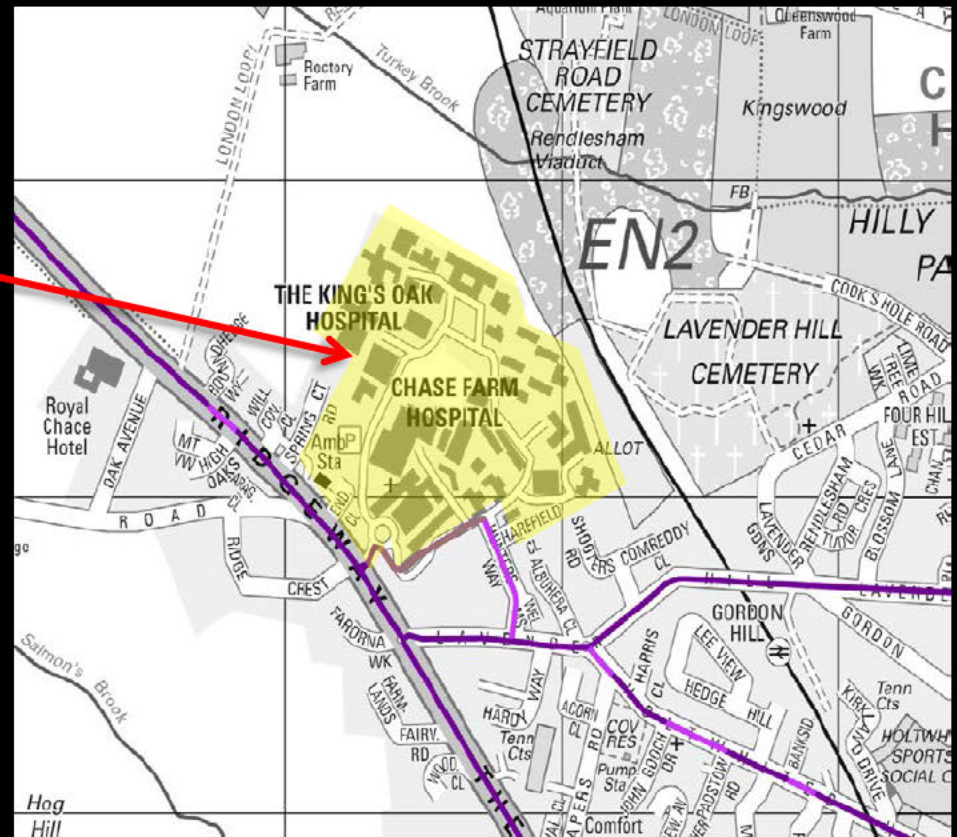
| Trip Generation         | Bus         |            |            |            |             |             |
|-------------------------|-------------|------------|------------|------------|-------------|-------------|
|                         | AM Peak     |            | PM Peak    |            | Daily       |             |
|                         | In          | Out        | In         | Out        | In          | Out         |
| Residential             | 108         | 290        | 351        | 245        | 2269        | 2651        |
| Employment              | 198         | 28         | 29         | 197        | 1951        | 1796        |
| Secondary Staff         | 49          | 12         | 2          | 5          | 83          | 82          |
| Secondary School Pupils | 1014        | 236        | 43         | 96         | 1739        | 1723        |
| College Staff           | 146         | 5          | 27         | 65         | 627         | 622         |
| College students        | 138         | 5          | 25         | 62         | 604         | 599         |
| <b>Total</b>            | <b>1653</b> | <b>576</b> | <b>477</b> | <b>670</b> | <b>7273</b> | <b>7473</b> |



# Key Development Site - Meridian Water



# Key Development Site - Chase Farm





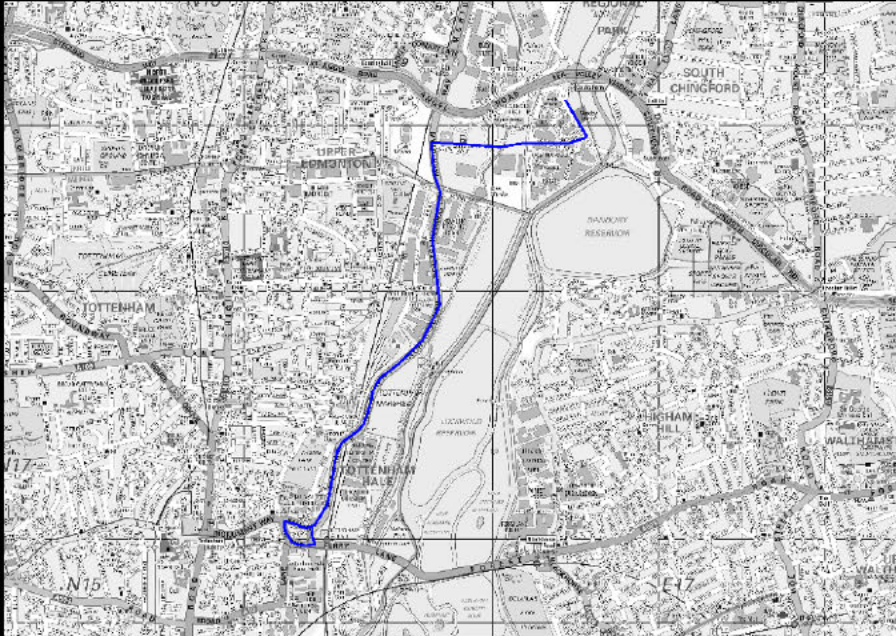
# Demand forecasts



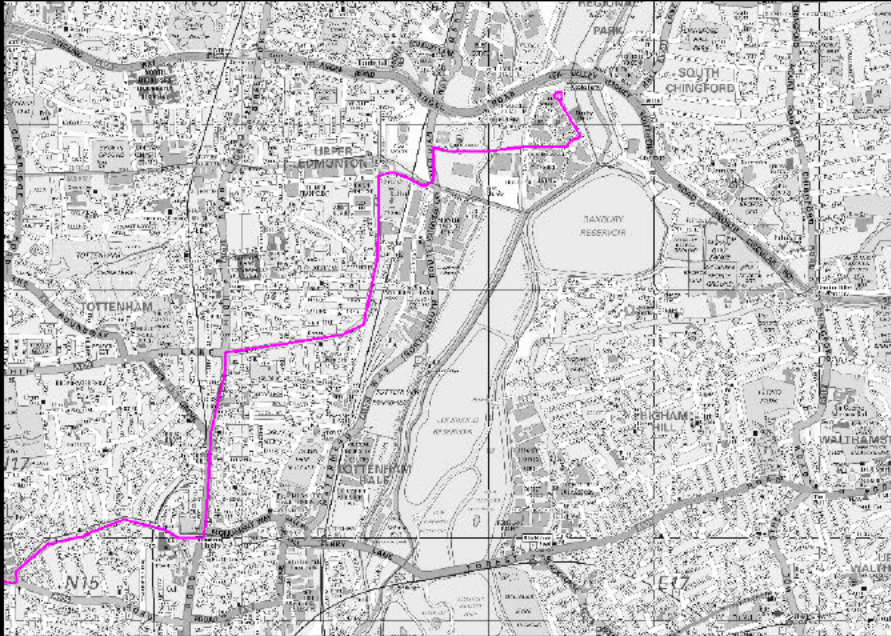
# Service Planning - Key Issues



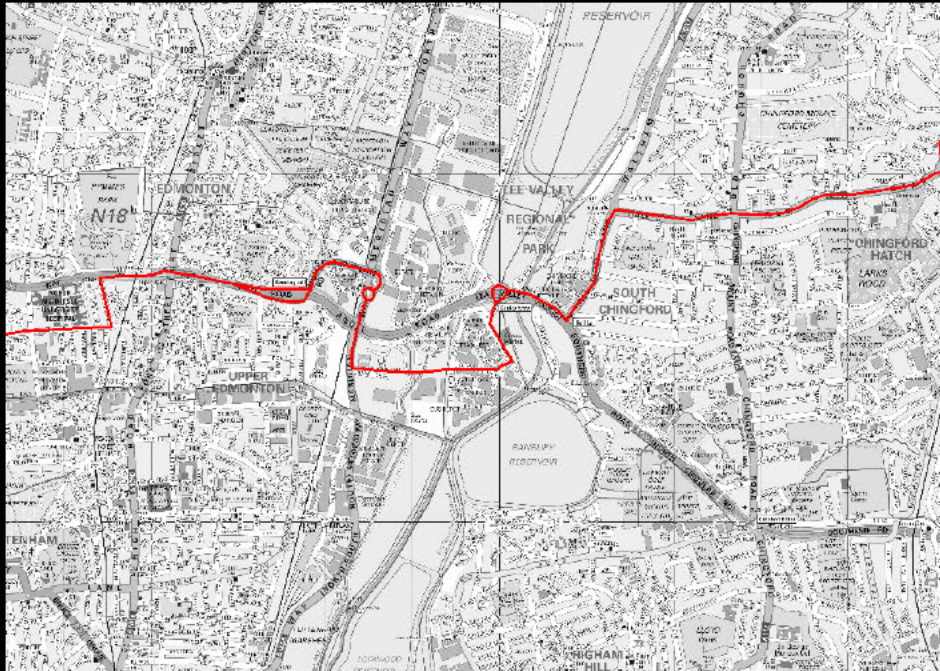
# Service Planning Concepts - Meridian Water



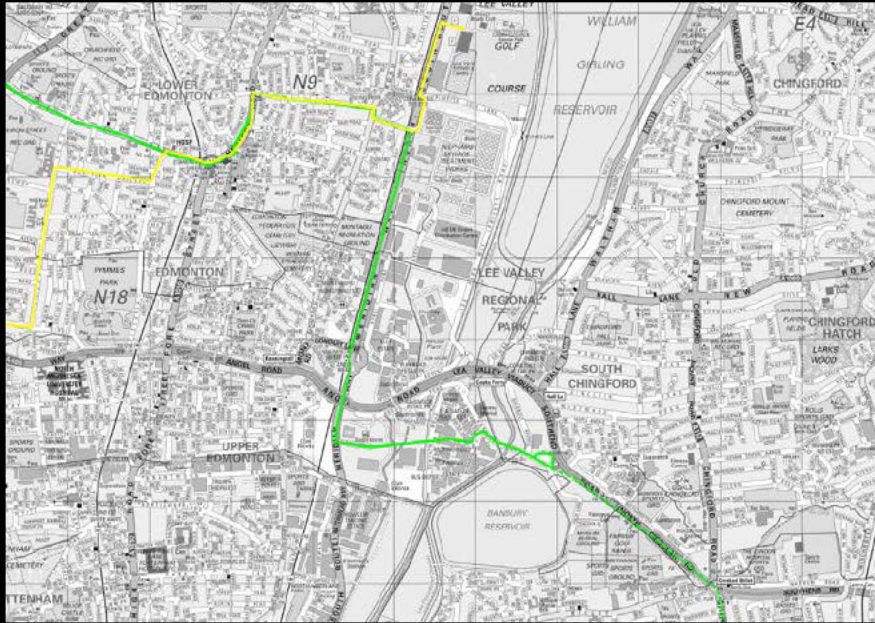
# Service Planning Concepts - Meridian Water



# Service Planning Concepts - Meridian Water



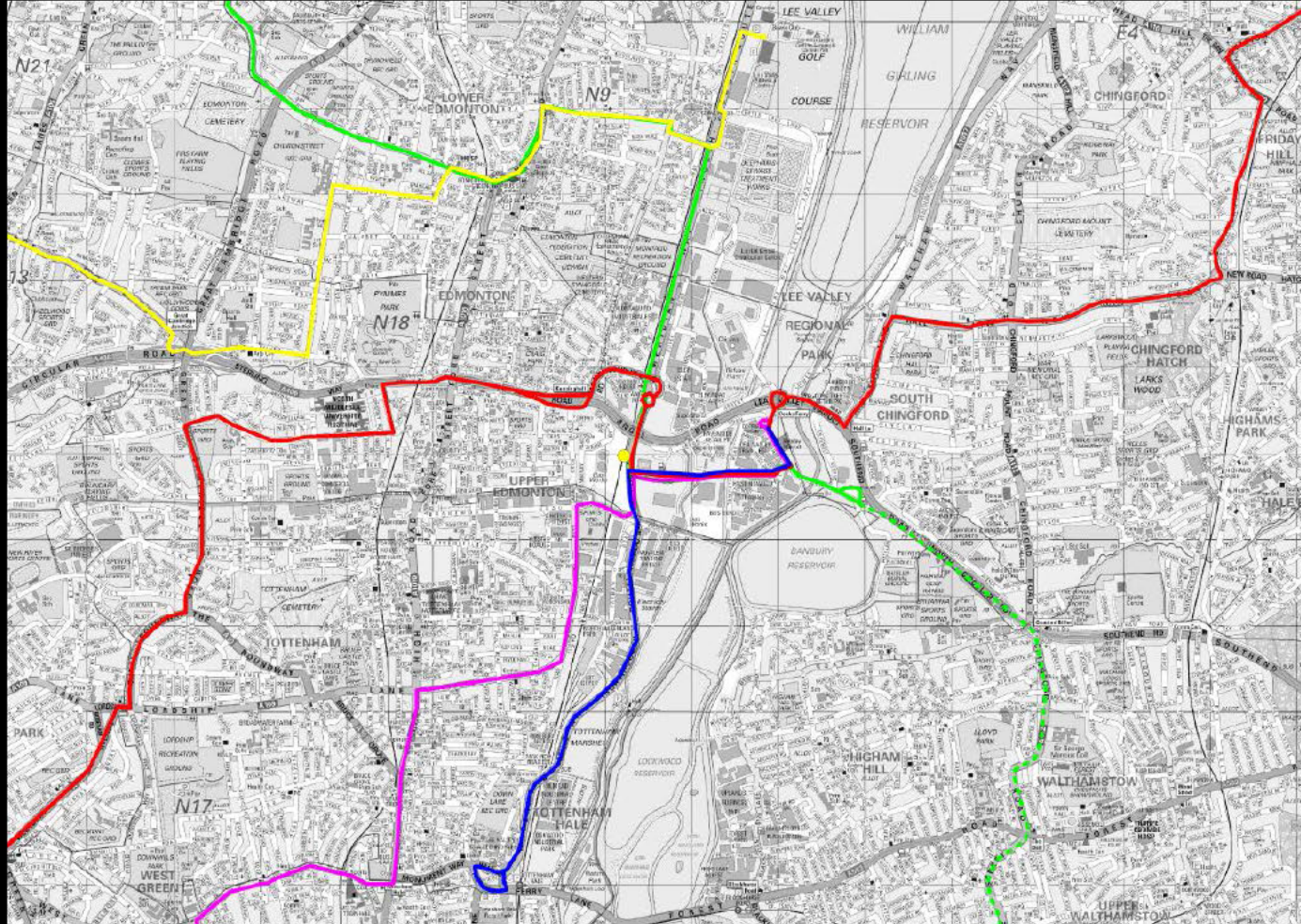
# Service Planning Concepts - Meridian Water



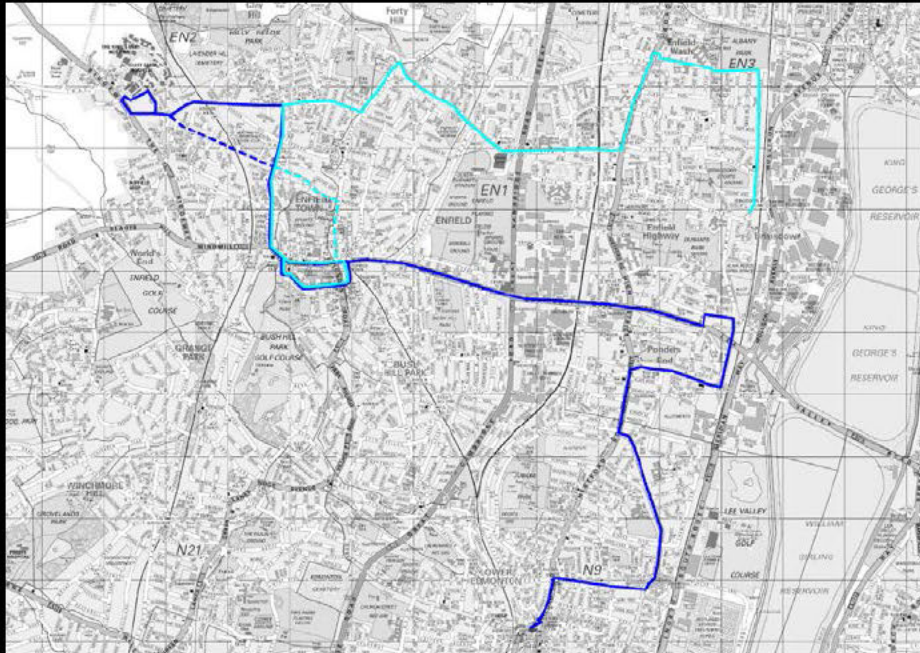
low to  
(50,000 pa)



# Service Planning Concepts - Meridian Water

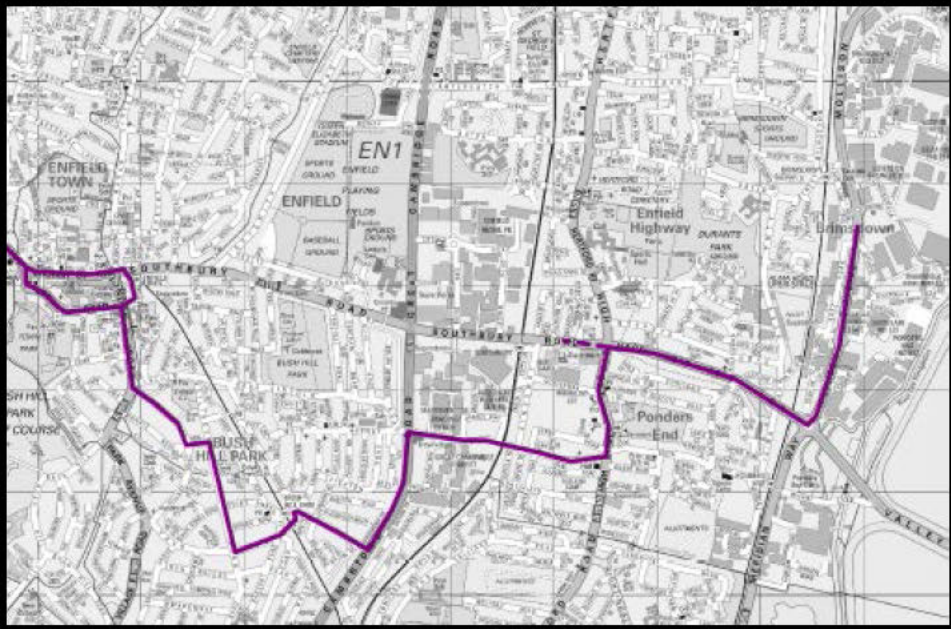


# Service Planning Concepts – Chase Farm

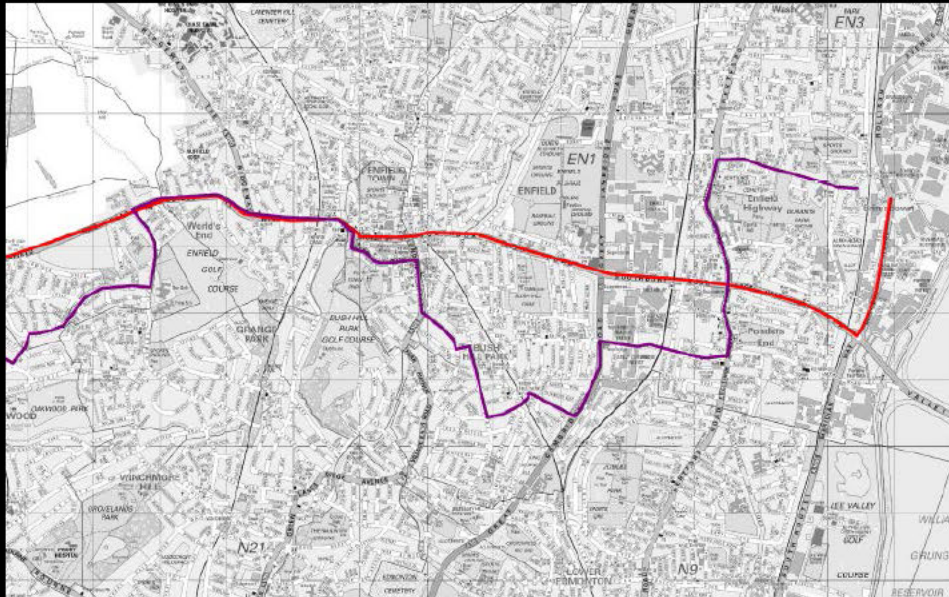




# Service Planning Concepts – SW to NE links



# Service Planning Concepts – SW to NE links



wn.



# Service Planning Concepts – Potential schemes



# Bus Infrastructure

| Location   | Scheme  |
|--|---|
| Edmonton Green                                   | Rerouting of a service via new busway on Montague Gardens/Birkenham Road  |
| Meridian Water                                   | Bus and cycle only bridges across the Essex Navigation as part of Meridian water development  |
| Route W19 extension to Essex Bridge Road station | Would require longer, seven-day access through nearby industrial estate (controlled by LB Waltham Forest, who are keen to see service extended) |
| Tottenham Hale                                   | Review of bus priority opportunities as part of area masterplanning   |
| Negs Head/Ponders End                            | Investigate options to provide east-west connection at level crossing   |



# Way Forward



[www.tfl.gov.uk](http://www.tfl.gov.uk)

