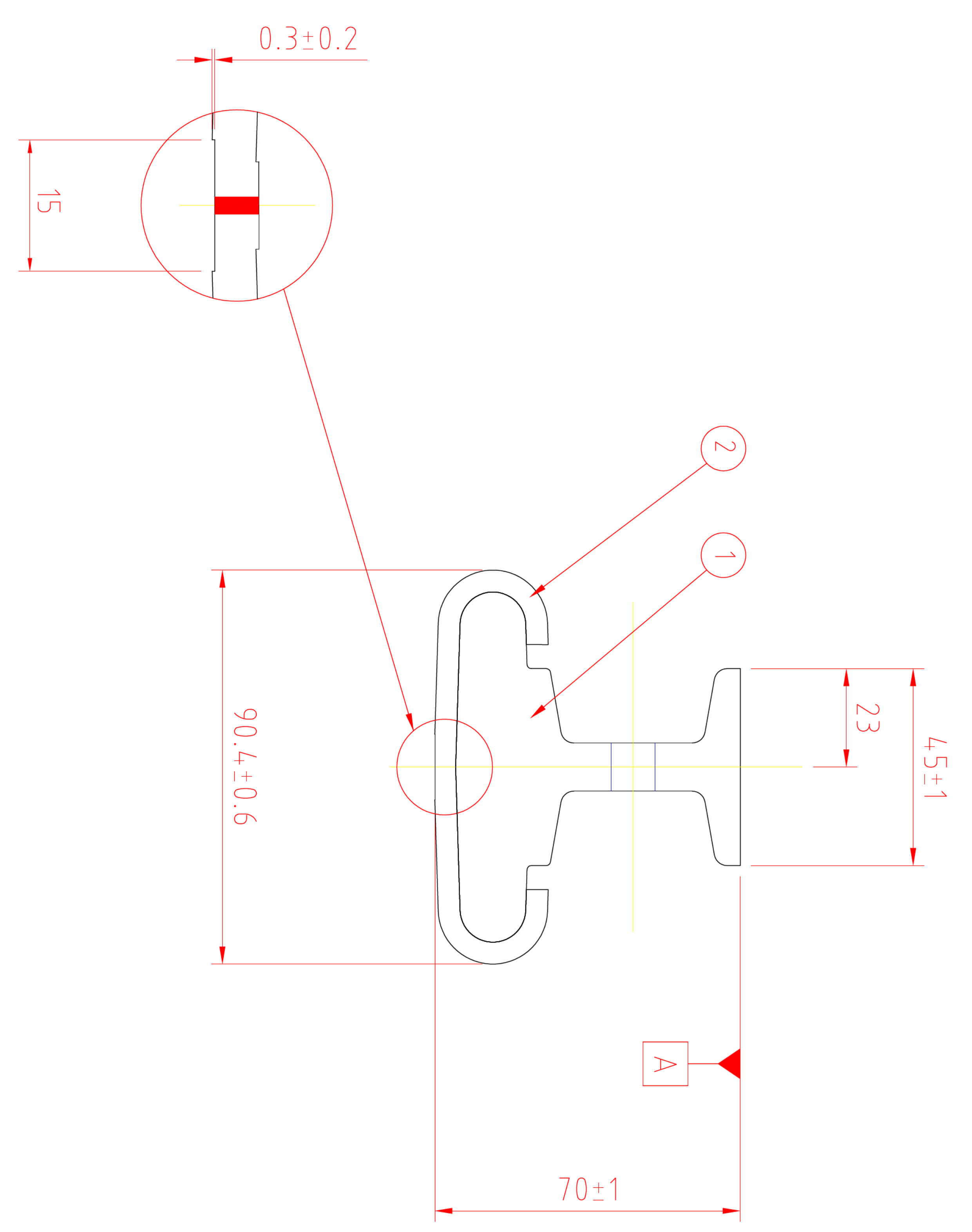


3. COUNTRY OF ORIGIN i.e. "MADE IN UK"
 & RAIL IDENTIFICATION TO BE STAMPED
 0.5M FROM BOLTED END OF CONDUCTOR
 RAIL USING 6mm HIGH LETTERING.
 POSITION ON WEB CENTER LINE

- NOTES:-
1. TOTAL RAIL WEIGHT:130 kg
 2. MANUFACTURED WITH REFERENCE TO TS6306
 3. RAIL MARKING WITH COUNTRY OF ORIGIN

PARTS LIST			
ITEM	DESCRIPTION	MATERIAL	PART NUMBER
1	RAIL EXTRUSION	ALUMINIUM ALLOY 6063 F22	M41428-05-E
2	'J' PIECE	SEE NOTE 7	M05455-12-D



This drawing is the property of Brecknell Mills & Co Ltd and shall not be used for any purpose other than that for which it was supplied, nor reproduced, copied or disclosed to any third party without prior permission.		GENERAL TOLERANCE ±0.5 ANGLE TOLERANCE ±0.5° SURFACE FINISH SEE LIST	MATERIAL & SPEC SEE LIST	FINISH NONE
NEXT ASSY. ----- TITLE No.4a SECTION COMPOSITE RAIL	SCALE 1:1	BRECKNELL, WILLIS & Co. Ltd. PO BOX. 10, Chard Somerset, England. TA20 2DE Telephone (01460) 64941 Fax (01460) 66122	BRECKNELL, WILLIS & Co. Ltd. PO BOX. 10, Chard Somerset, England. TA20 2DE Telephone (01460) 64941 Fax (01460) 66122	BRECKNELL, WILLIS & Co. Ltd. PO BOX. 10, Chard Somerset, England. TA20 2DE Telephone (01460) 64941 Fax (01460) 66122