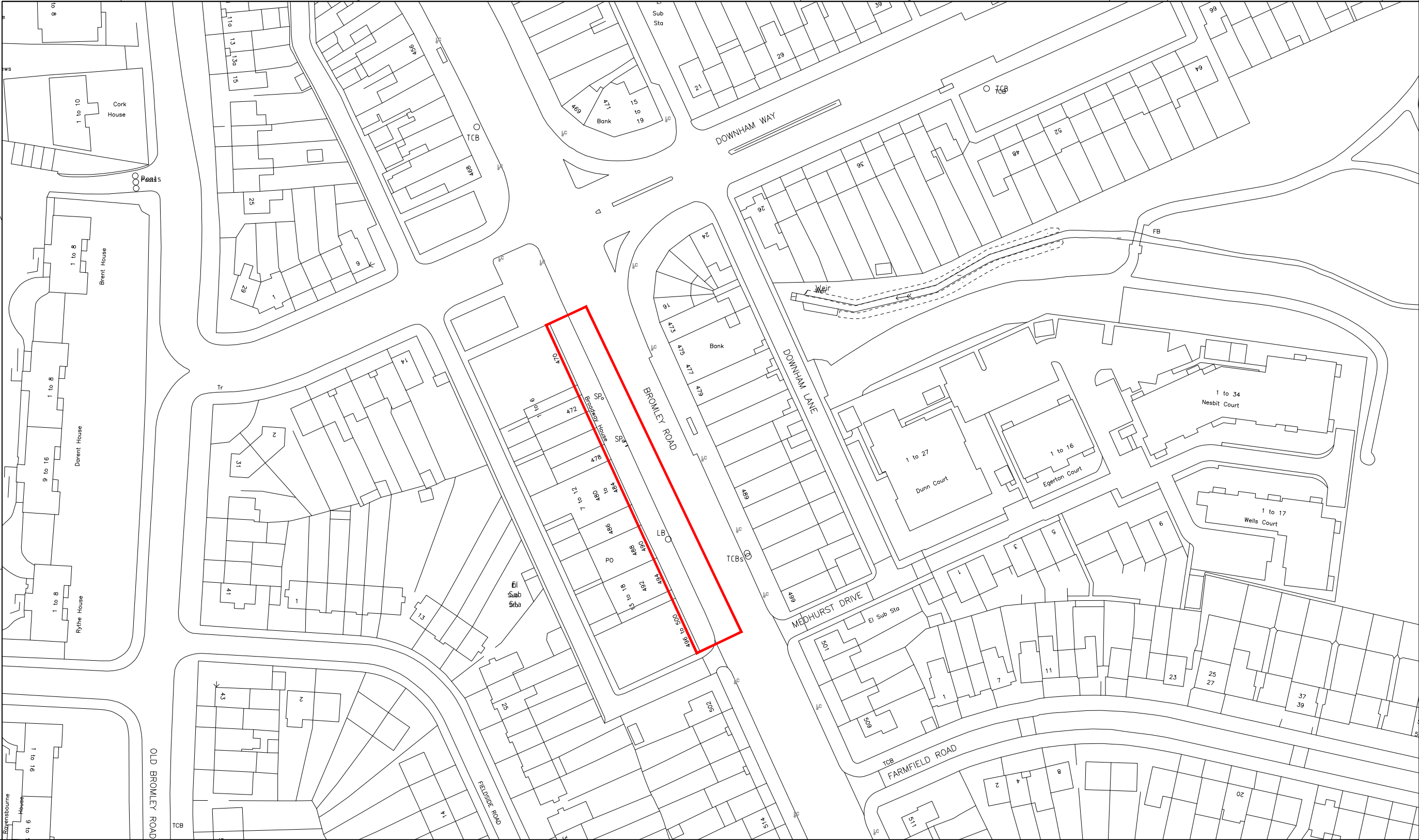


1.17



SITE PLAN
1:100

LOCATION PLAN – BR1 4PB
1:1250

NOTES:

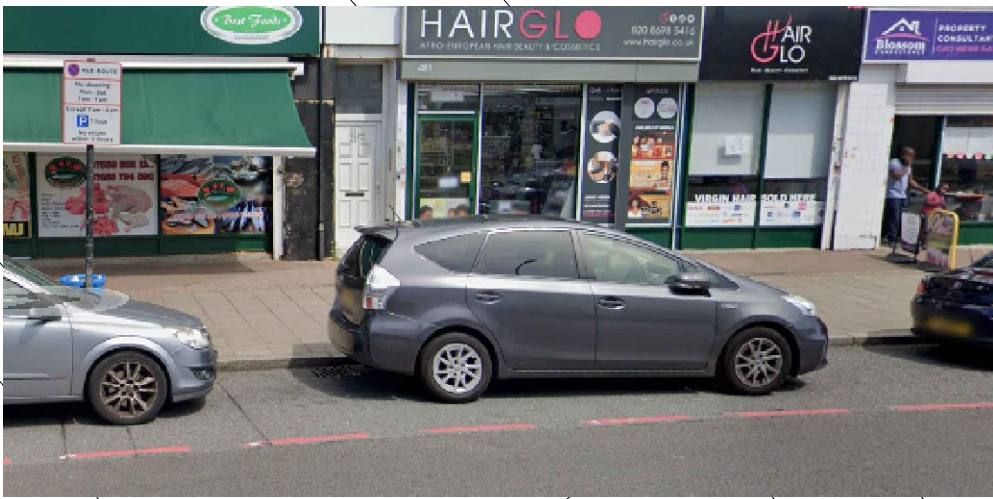
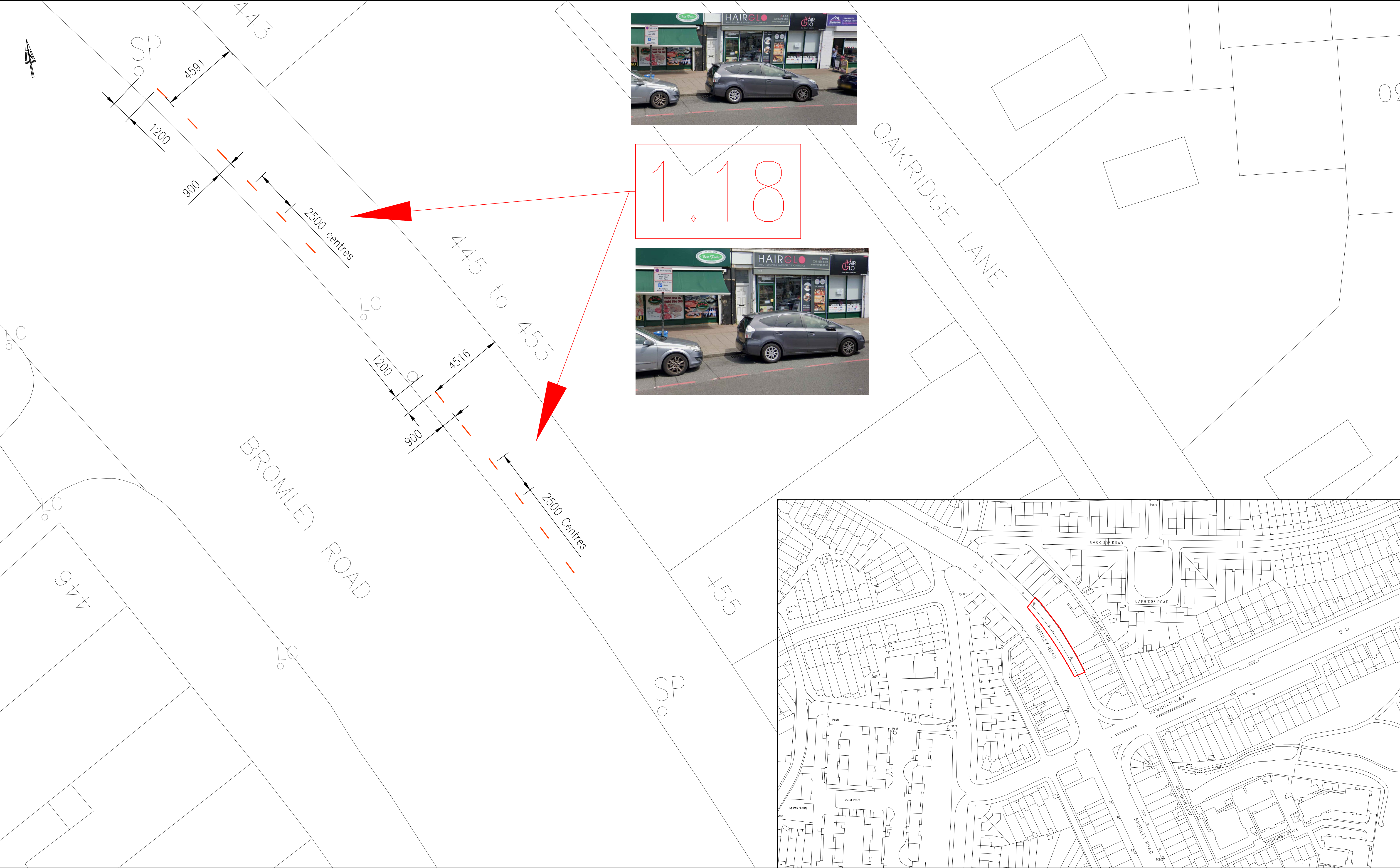
1. All works shall be in accordance with The Specification For Highway Works.
2. All dimensions are in metres unless stated otherwise.
3. Cycle stand layouts are dependant on the existing conditions of each location.
4. Refer to drawing TCPL STANDARD DETAILS.dwg for layout arrangements construction details.

KEY:

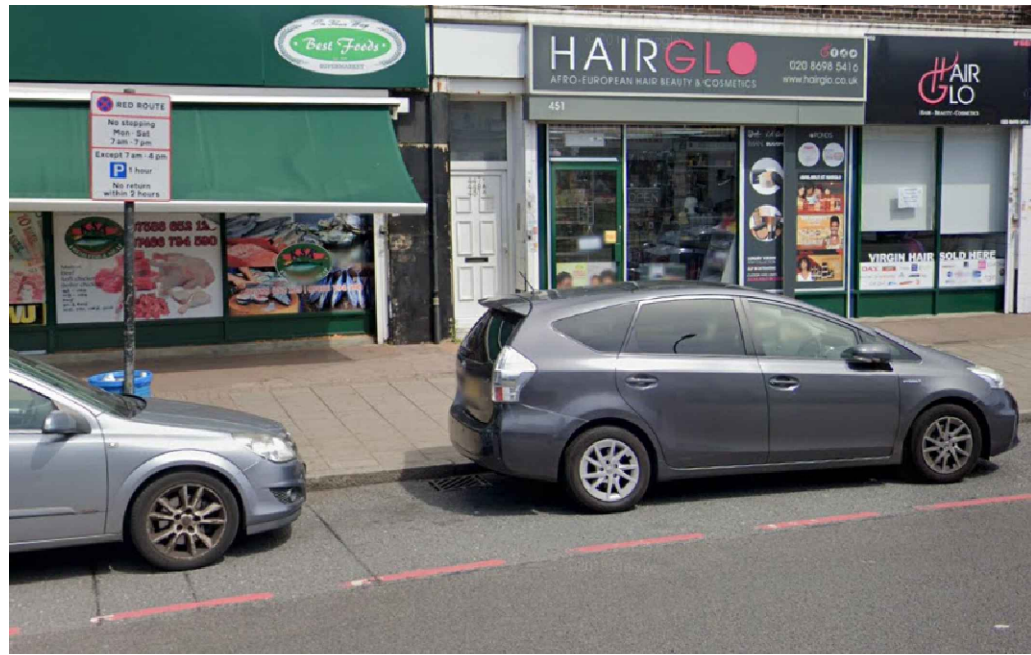
- Orange dashed line: Cycle stand (Tapping rail). Start, End and Parallel orientation
- Green dashed line: Cycle stand (No Tapping rail) and orientation
- Blue dashed line: Cycle stand 2m parking zone



PROJECT	PROPOSED CYCLE PARKING LOCATIONS	DRAWN BY	MG
DESIGNED BY	CW	CHECKED BY	CW
APPROVED BY	AYA	DATE	29/05/2020
PURPOSE	INFORMATION	SCALE	A1
DRAWING NUMBER	2020.05.26-1.17	REVISION	B



1.18



SITE PLAN
1:100

LOCATION PLAN – BR1 4PR
1:1250

NOTES:

1. All works shall be in accordance with The Specification For Highway Works.
2. All dimensions are in metres unless stated otherwise.
3. Cycle stand layouts are dependant on the existing conditions of each location.
4. Refer to drawing TCPL STANDARD DETAILS.dwg for layout arrangements construction details.

KEY:

- Cycle stand (Tapping rail). Start,End and Parallel orientation
- Cycle stand (No Tapping rail) and orientation
- Cycle stand 2m parking zone



PROJECT	PROPOSED CYCLE PARKING LOCATIONS	DRAWN BY	MG
CHECKED BY	CW	DESIGNED BY	CW
APPROVED BY	AYA	CHECKED BY	CW
DATE	29/05/2020	APPROVED BY	AYA
PURPOSE	INFORMATION	DATE	29/05/2020
SCALE	A1	PURPOSE	INFORMATION
DRAWING NUMBER	2020.05.26-1.18	SCALE	A1
REVISION	A	DRAWING NUMBER	2020.05.26-1.18



SITE PLAN
1:100



LOCATION PLAN – SE6 4BJ
1:2500

NOTES:

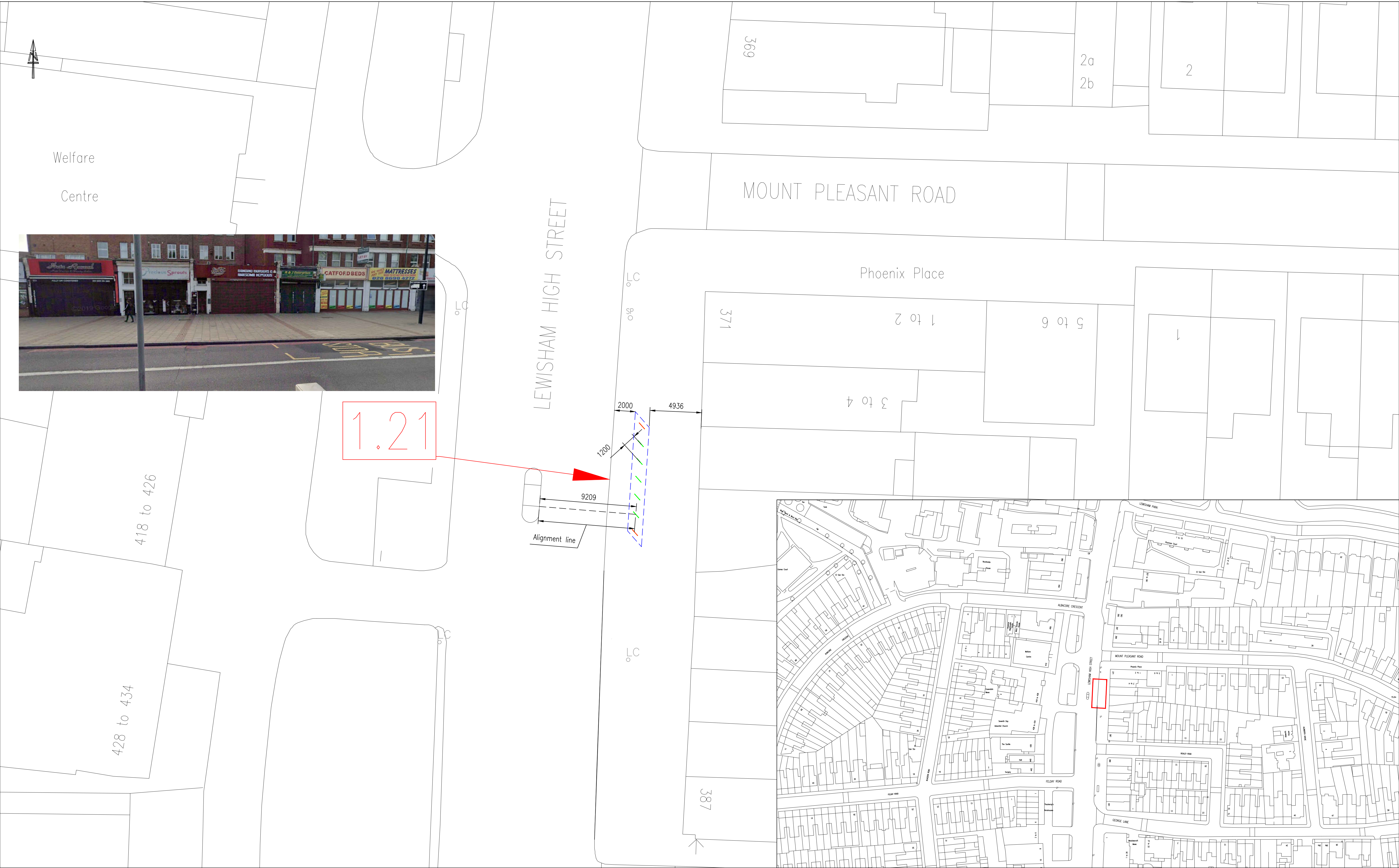
1. All works shall be in accordance with The Specification For Highway Works.
2. All dimensions are in metres unless stated otherwise.
3. Cycle stand layouts are dependant on the existing conditions of each location.
4. Refer to drawing TCPL STANDARD DETAILS.dwg for layout arrangements construction details.

KEY:

- Cycle stand (Tapping rail). Start,End and Parallel orientation
- Cycle stand (No Tapping rail) and orientation
- Cycle stand 2m parking zone



PROJECT PROPOSED CYCLE PARKING LOCATIONS	DRAWN BY MG
DRAWING TITLE 159 Rushey Green, Lewisham	CHECKED BY CW
DRAWING NUMBER 2020.05.26-1.19	APPROVED BY AYA
DATE 29/05/2020	PURPOSE INFORMATION
SCALE A1	REVISION A



SITE PLAN
1:100

LOCATION PLAN – SE13 6LJ
1:1250

NOTES:

1. All works shall be in accordance with The Specification For Highway Works.
2. All dimensions are in metres unless stated otherwise.
3. Cycle stand layouts are dependant on the existing conditions of each location.
4. Refer to drawing TCPL STANDARD DETAILS.dwg for layout arrangements construction details.

KEY:

- Cycle stand (Tapping rail). Start,End and Parallel orientation
- Cycle stand (No Tapping rail) and orientation
- Cycle stand 2m parking zone



PROJECT	PROPOSED CYCLE PARKING LOCATIONS	DRAWN BY	MG
DESIGNED BY	CW	CHECKED BY	CW
APPROVED BY	AYA	DATE	29/05/2020
PURPOSE	INFORMATION	SCALE	A1
DRAWING NUMBER	2020.05.26-1.21	REVISION	B



<p>NOTES:</p> <ol style="list-style-type: none">All works shall be in accordance with The Specification For Highway Works.All dimensions are in metres unless stated otherwise.Cycle stand layouts are dependant on the existing conditions of each location.Refer to drawing TCPL STANDARD DETAILS.dwg for layout arrangements construction details.		<p>KEY:</p> <ul style="list-style-type: none">Cycle stand (Tapping rail). Start,End and Parallel orientationCycle stand (No Tapping rail) and orientationCycle stand 2m parking zone		<p>KIER</p> <p>LONDON HIGHWAYS ALLIANCE</p>		<p>PROJECT: PROPOSED CYCLE PARKING LOCATIONS</p> <p>DRAWING TITLE: Lewisham High Street / Lewisham Hospital</p> <p>DRAWING NUMBER: 2020.05.26-1.22</p>		<p>DRAWN BY: MG DESIGNED BY: CW CHECKED BY: CW APPROVED BY: AYA DATE: 29/05/2020</p> <p>REVISION: B</p>	
<p>S:\01 - Schemes Register 2019\TCPL_Dwgs\TCPL LOCATIONS.dwg</p>		<p>B 04/06/20 Parallel Cycle stand type amended. A 01/06/20 Cycle stand layouts amended.</p>		<p>MG AA AA JF JF AA AA JF JF AA AA JF</p>		<p>REVISION: B</p>		<p>© KIER</p>	



SITE PLAN
1:100

LOCATION PLAN – SE13 7FT
1:1250

NOTES:

1. All works shall be in accordance with The Specification For Highway Works.
2. All dimensions are in metres unless stated otherwise.
3. Cycle stand layouts are dependant on the existing conditions of each location.
4. Refer to drawing TCPL STANDARD DETAILS.dwg for layout arrangements construction details.

KEY:

- Cycle stand (Tapping rail). Start,End and Parallel orientation
- Cycle stand (No Tapping rail) and orientation
- Cycle stand 2m parking zone



PROJECT
PROPOSED CYCLE
PARKING LOCATIONS

DRAWING TITLE
Loampit Vale, Lewisham

DRAWING NUMBER
2020.05.26-1.23

DRAWN BY MG
DESIGNED BY CW
CHECKED BY CW
APPROVED BY AYA
DATE 29/05/2020
PURPOSE
INFORMATION
SCALE A1
REVISION
B

B 04/06/20 Cycle stand units reduced.
A 01/06/20 Cycle stand layouts amended.
REV DATE AMENDMENT
MG AA AA JF
JF JF JF
JF JF JF