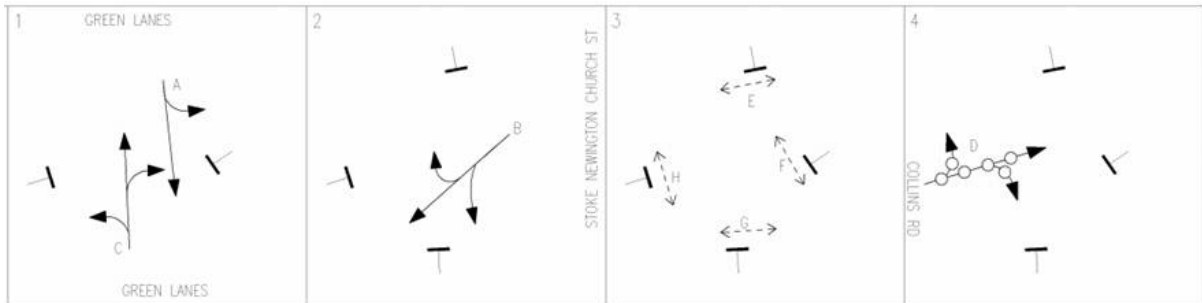
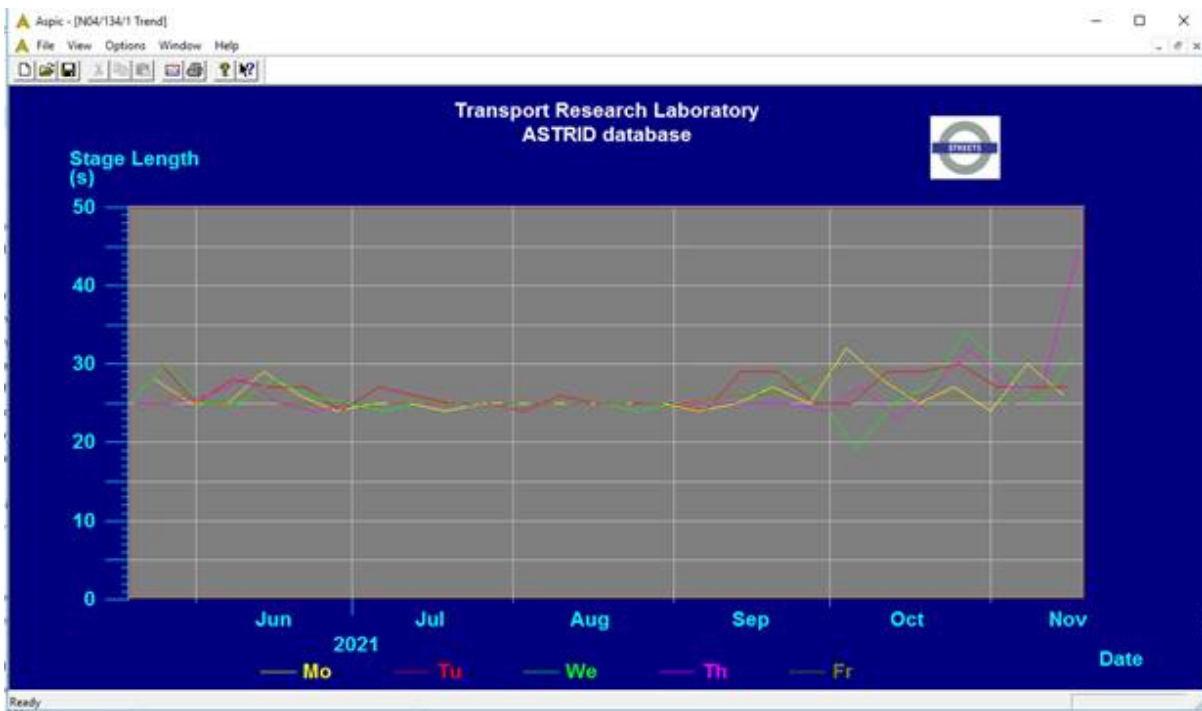


Method of Control – Green Lanes /Stoke Newington Church Street

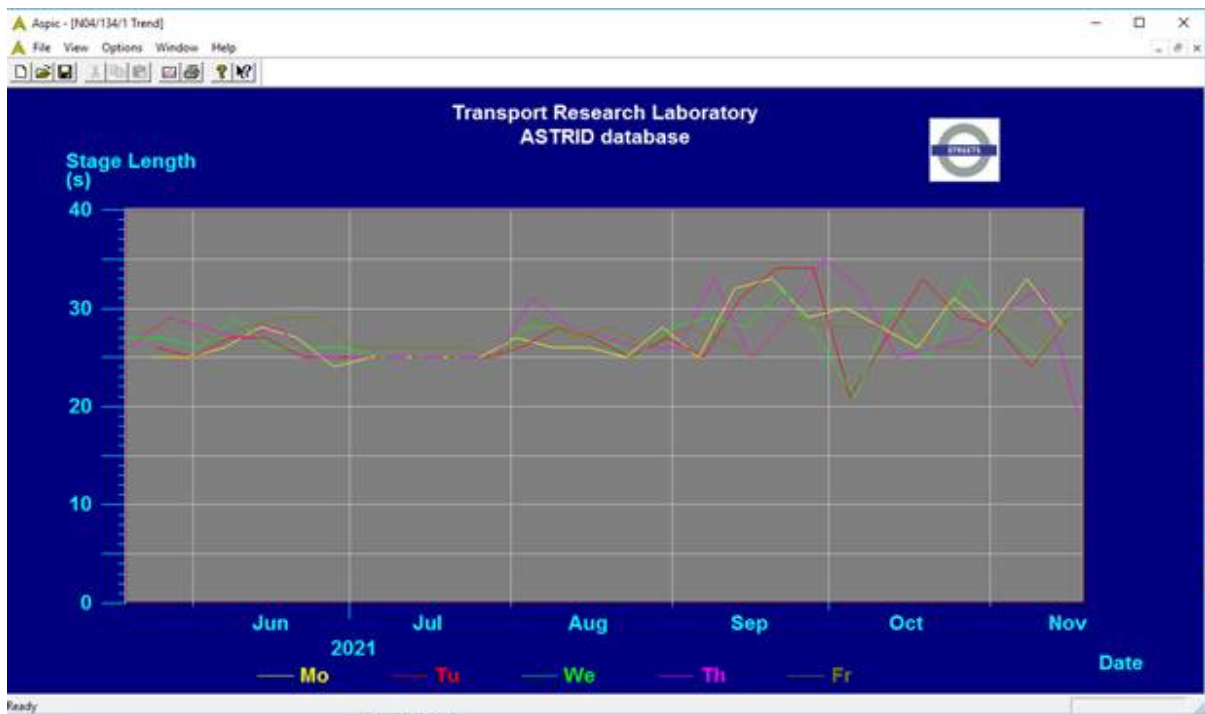


Stage 1 (Green Lanes) Green Stage Duration Trends

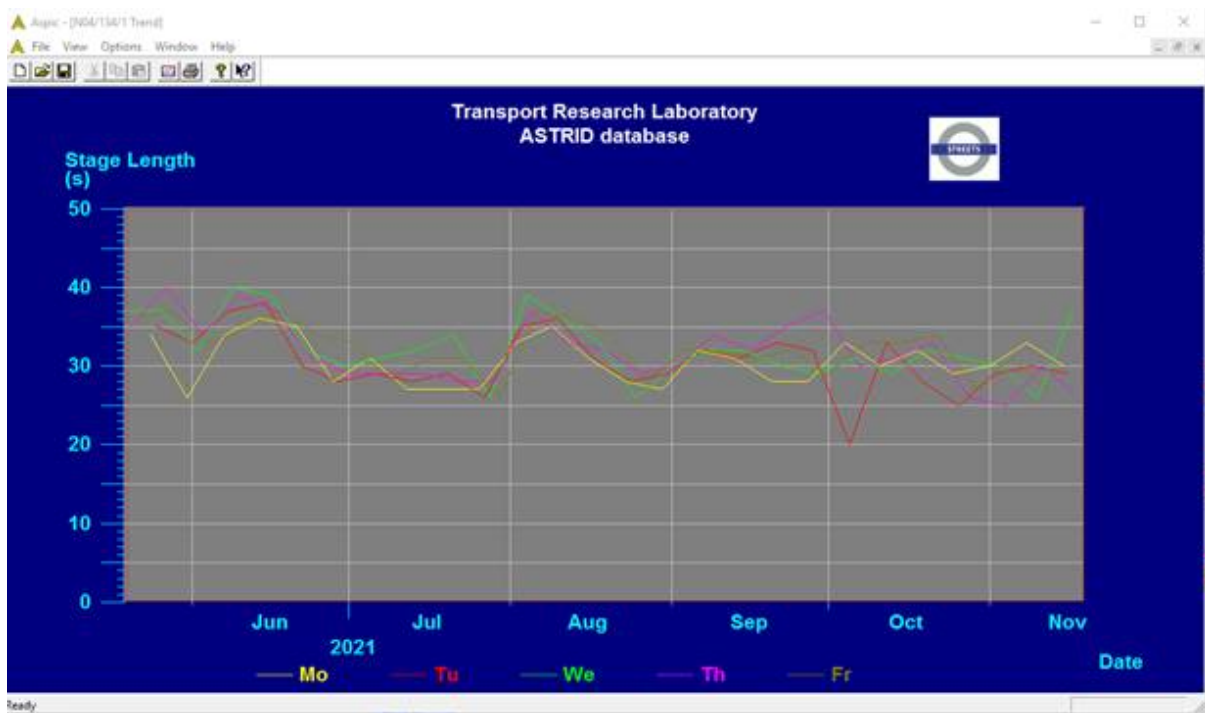
AM Peak – 07:00 – 10:00



Off Peak – 10:00 – 16:00



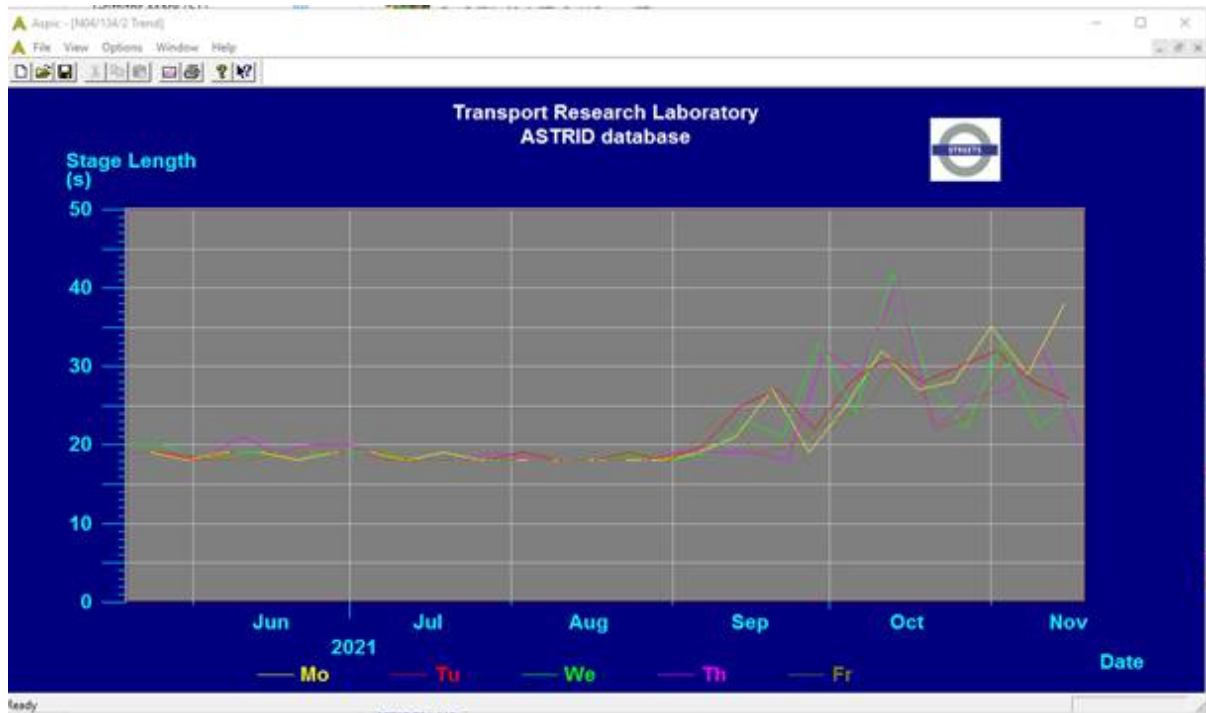
PM Peak – 16:00 – 19:00



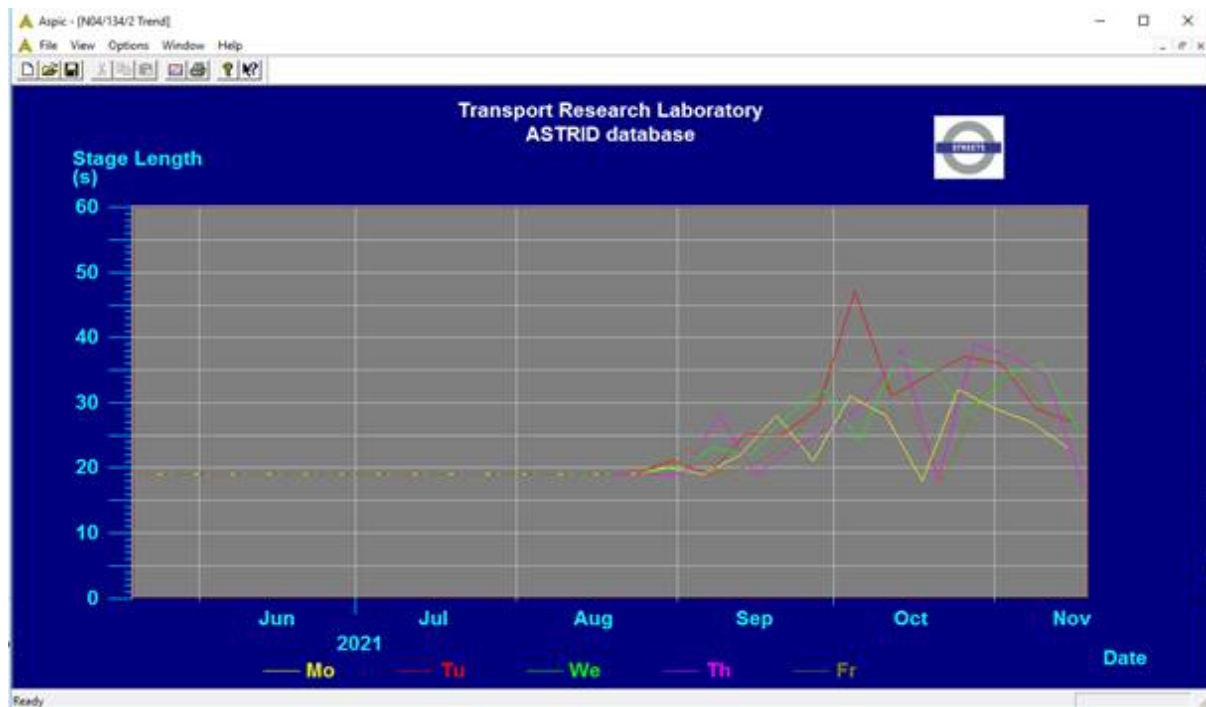
As illustrated by the graph above, there has been an increase in stage duration for stage 1 (Green Lanes) since the closure was implemented on Stoke Newington Church Street:

Stage 2 (Stoke Newington Church Street) Green S Stage Duration Trends

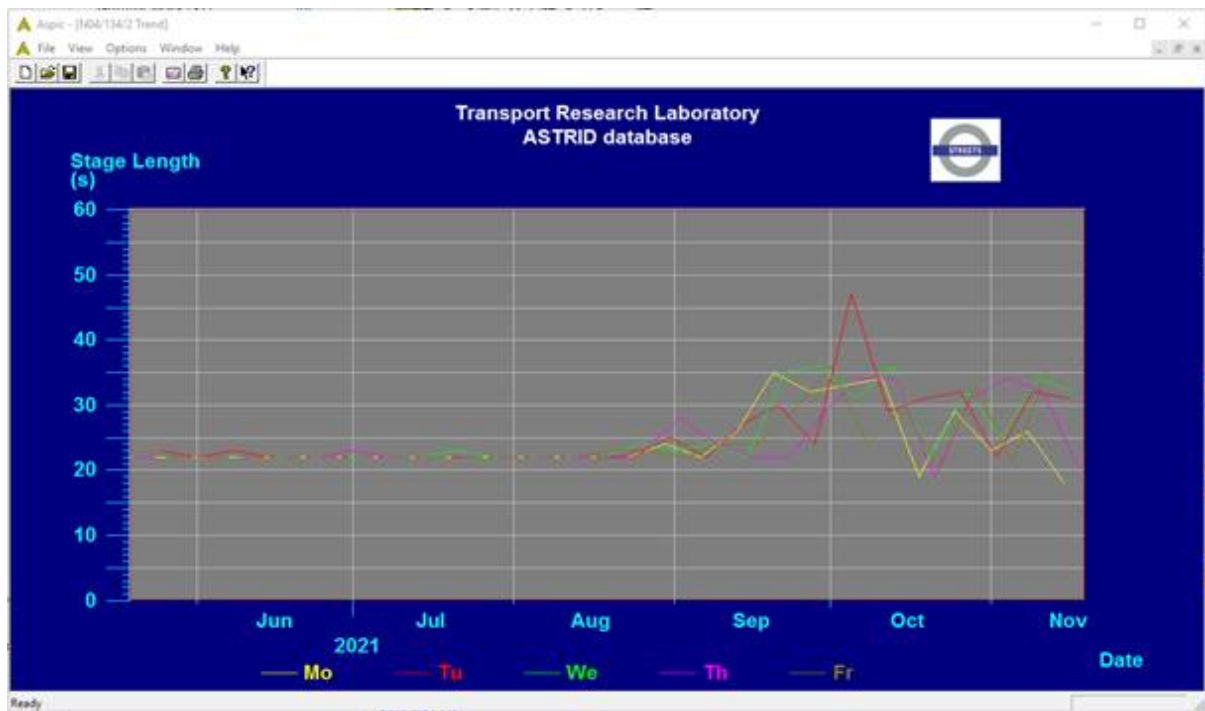
AM Peak – 07:00 – 10:00



Off Peak – 10:00 – 16:00



PM Peak – 16:00 – 19:00



In the past week we have made further changes to the signals timings to increase the time given to stage 1 (Green Lanes) as shown by the dip in the profiles on the graphs for stage 2 (Stoke Newington Church Street). The signals at this location run an adaptive signal strategy which responds to traffic levels and so would change green durations automatically to the traffic flow changes caused by the closure of Stoke Newington Church Street.