

1) SERVICE SPECIFICATION

Route: **1 & N1**

Contract Reference: **QC84501**

This Service Specification forms section 7 of the ITT and should be read in conjunction with the ITT document, Version 2.0, dated 5th March 2021.

You are formally invited to tender for the provision of the bus service detailed below and in accordance with this Service Specification. Tenderers must ensure that a Compliant Tender is submitted, and this will only be considered for evaluation if all parts of the Tender documents, as set out in Section 11, have been received by the Corporation by the Date of Tender. The Tender must be fully completed in the required format, in accordance with the Instructions to Tenderers. A Compliant Tender must comply fully with the requirements of the Framework Agreement; adhere to the requirements of the Service Specification.

Terminus Points - Route No. 1	Hampstead Heath, South End Green and Canada Water Bus Station
Terminus Points - Route No. N1	Tottenham Court Road Station, New Oxford Street/Earnshaw Street and Thamesmead, Titmuss Avenue/Disraeli Close
Contract Basis	Incentivised
Commencement Date	Saturday 30/09/2023
End Date	Friday 27/09/2030
Early Termination Date <i>Subject to minimum 10 months notice</i>	Friday 01/10/2027
Vehicle Type	87 capacity, dual door, double deck vehicles
Current Maximum Approved Dimensions	10.4 metres long and 2.55 metres wide
New Vehicle Price Mandatory	Yes
Zero Emission Price Required	Yes
Advertising Rights	Operator
Minimum Performance Standard - Route No. 1	Average Excess Wait Time - No more than 1.30 minutes
Minimum Operated Mileage Standard - Route No. 1	No less than 98%
Minimum Performance Standard - Route No. N1	Departing on Time - No less than 88%
Minimum Operated Mileage Standard - Route No. N1	No less than 99%

The Date of Tender for this ITT is:
No later than 12 Noon on **Tuesday 4th October 2022.**

SERVICE SPECIFICATION

- 1) SERVICE SPEC - ROUTE SPECIFICATION INFORMATION
- 2) NOTES
- 3) SCHEDULE REQUIREMENTS & PINCHPOINTS
- 4) OPERATIONAL CONSIDERATIONS
- 5) ROUTE RECORD, CURRENT PERFORMANCE, QSI BY TIME OF DAY, IBUS MILEAGE & QSI POINTS

2) NOTES

Proposed Changes:

At this time, no changes are proposed to the existing service for introduction prior to the commencement of the new Route Agreement for Route Nos. 1 & N1.

Tenderers should note that the following alterations are proposed as part of this Service Specification for introduction with the new Route Agreement:

Route No. 1

- Route No. 1 is re-structured to operate between Hampstead Heath, South End Green and Canada Water Bus Station.
- Route No. 1 is extended from Holborn Station to Hampstead Heath, South End Green via Route No. 168 routeing.
- The section of routeing between Holborn Station and Tottenham Court Road Station, New Oxford Street/Earnshaw Street is withdrawn.
- **Please see Section 5 for a full list of streets traversed and standing arrangements.**
- Mondays to Saturdays daytime frequencies are increased from every 10 minutes to every 8-9 minutes (7 buses per hour).
- Ex Hampstead Heath, South End Green, the one Mondays to Fridays PM peak flow journey specified to provide a frequency of every 8-9 minutes (7 buses per hour) between 1650 and 1750 is withdrawn.
- Ex Canada Water Bus Station, the one Mondays to Fridays AM peak flow journey specified to provide a frequency of every 8-9 minutes (7 buses per hour) between 0720 and 0820 is withdrawn.
- Ex Grange Road, Dunton Road, the Mondays to Fridays Schooldays afternoon journey at 1512 is withdrawn.
- Ex Hampstead Heath, South End Green, departures are back projected from Holborn Station.
- Route No. 168 departure times were used as a guide to determine Route No. 1 departure times.
- Ex Hampstead Heath, South End Green, the first departure is re-timed 25 minutes earlier after back projection.
- Ex Canada Water Bus Station, the first departure is re-timed from 0500 to 0530 on Mondays to Fridays and from 0600 to 0530 on Sundays.
- Ex Canada Water Bus Station, the last departure is re-timed from 0025 to 0015.
- Ex Canada Water Bus Station, first departures on Mondays to Saturdays and Sundays are standardised for a standardised nightly service.

2) NOTES - continued

Proposed Changes (continued):

Route No. N1

- Ex Tottenham Court Road Station, New Oxford Street, the first departure is re-timed from 0025 to 0050 and the last departure is re-timed from 0525 to 0450 to remove the overlap with Route No. 1 over the common section of routeing.
- Ex Thamesmead, Disraeli Close, the first departure is re-timed from 0020 to 2400 to improve the interface with Route No. 1 over the common section of routeing.
- Ex Thamesmead, Disraeli Close, the last departure is re-timed from 0450 to 0430 to remove the overlap with Route No. 1 over the common section of routeing.

Route Nos. 1 & N1

- The Minimum Performance Standard is revised.
- **The alterations will be introduced as part of a package of network changes.**

The Ultra Low Emission Zone (ULEZ) currently covers Central London and replaced the T-Charge (toxicity) on 8th April 2019. It operates 24 hours a day, 7 days a week, every day of the year except Christmas Day (25th December).

On 25th October 2021, the Ultra Low Emission Zone (ULEZ) expanded from Central London to create a single larger zone bounded by the North Circular Road (A406) and South Circular Road (A205). The North and South Circular Roads themselves are not included in the zone. Route Nos. 1 & N1 operate in the Ultra Low Emission Zone (ULEZ).

The Congestion Charge zone covers the area within the London Inner Ring Road which includes the City of London and the West End and operates between 0700 and 1800 on weekdays and between 1200 and 1800 on weekends and bank holidays except between Christmas Day and New Year's Day bank holiday inclusive. Route Nos. 1 & N1 operate in the Congestion Charge zone.

All double deck buses operating for TfL within the Congestion Charge zone must be hybrid (meeting Euro VI emissions standards) or zero emission (at tailpipe).

- **Tenderers must identify the cost of the Nightly element of this service separately.**

2) NOTES - continued

Tenderers should provide the following prices based on a 7 year fixed term contract:

1. Annual Zero Emission

For zero emission submissions, Tenderers should outline the strategy they would adopt for recharging battery electric and/or refuelling hydrogen buses, together with any other operational and infrastructure assumptions, within the tender submission.

Tenderers are encouraged to offer alternative vehicle options in accordance with Part 9 of their tender, including but not limited to:

1. Vehicles that offer genuine increased capacity and are certified as such.
2. Existing zero emission vehicles or vehicles to a minimum of Euro VI emissions standards which are no greater than eight years old at contract commencement for the full contract term, with an early termination date on or prior to the Friday closest to the fourth anniversary of the Route Agreement commencement date, subject to a minimum of 10 months notice. Please note that existing diesel vehicles will NOT be considered for routes which are already operated by hybrid or zero emission vehicles.
3. Existing zero emission vehicles or vehicles to a minimum of Euro VI emissions standards which are no greater than ten years old at contract commencement for a 5 year contract term, with an early termination date on or prior to the Friday closest to the third anniversary of the Route Agreement commencement date, subject to a minimum of 10 months notice. Please note that existing diesel vehicles will NOT be considered for routes which are already operated by hybrid or zero emission vehicles.

If submitting bids based on electric vehicles, Tenderers are reminded of the revised charging equipment specification requirement applicable from Tranche 726.

Tenderers are reminded that a price submitted for this Route Agreement will be subject to the revised CPA formula of 85% CPI (12 rolling months) and 15% fixed.

The welfare of bus drivers during their working day is essential and appropriate locations for sign-on/off as well as meal reliefs should be identified with the bid. These locations should have appropriate facilities available for drivers at the beginning and end of shifts to carry out their duties (including fitness for duty). For breaks and periods of rest between work there should be appropriate toilet provision (including the availability, condition and cleanliness) and suitable locations to take a break. Whilst the obligation to provide suitable facilities remains with the Tenderer, if there are any risks in not being able to supply these, the Tenderer must make LBSL aware in their bid or at any later stage when this becomes apparent.

3) SCHEDULE REQUIREMENTS & PINCHPOINTS

3.1) MONDAY TO FRIDAY SCHEDULE REQUIREMENTS & PINCHPOINTS

Hampstead Heath, South End Green to Canada Water Bus Station			Canada Water Bus Station to Hampstead Heath, South End Green		
First departure no later than 0500.			First departure no later than 0530.		
0455 - 0615	Every 15 minutes		0525 - 0600	Every 15 minutes	
0616 - 0650	Every 12 minutes		0601 - 0625	Every 12 minutes	
0651 - 0720	Every 10 minutes		0626 - 0655	Every 10 minutes	
0721 - 1935	Every 8-9 minutes (7 buses per hour)		0656 - 1850	Every 8-9 minutes (7 buses per hour)	
1936 - 2035	Every 10 minutes		1851 - 1950	Every 10 minutes	
2036 - 0005	Every 12 minutes		1951 - 0020	Every 12 minutes	
Last departure no earlier than 2400.			Last departure no earlier than 0015.		
Pinchpoints					
Elephant & Castle, London Road	0730 - 0800	10 minutes	Euston Station, Eversholt Street	0720 - 0750	10 minutes
	0801 - 0900	9 minutes		0751 - 0900	9 minutes
	1455 - 1630	9 minutes		1455 - 1630	9 minutes

3.2) SATURDAY AND GOOD FRIDAY SCHEDULE REQUIREMENTS & PINCHPOINTS

Hampstead Heath, South End Green to Canada Water Bus Station			Canada Water Bus Station to Hampstead Heath, South End Green		
First departure no later than 0500.			First departure no later than 0530.		
0455 - 0645	Every 15 minutes		0525 - 0630	Every 15 minutes	
0646 - 0820	Every 12 minutes		0631 - 0755	Every 12 minutes	
0821 - 0850	Every 10 minutes		0756 - 0825	Every 10 minutes	
0851 - 1835	Every 8-9 minutes (7 buses per hour)		0826 - 1750	Every 8-9 minutes (7 buses per hour)	
1836 - 1935	Every 10 minutes		1751 - 1850	Every 10 minutes	
1936 - 0005	Every 12 minutes		1851 - 0020	Every 12 minutes	
Last departure no earlier than 2400.			Last departure no earlier than 0015.		
Pinchpoints					
Elephant & Castle, London Road	0900 - 0930	10 minutes	Euston Station, Eversholt Street	0910 - 1110	9 minutes
	0931 - 1105	9 minutes			

3) SCHEDULE REQUIREMENTS & PINCHPOINTS - continued

3.3) SUNDAY AND PUBLIC HOLIDAYS (EXCEPT GOOD FRIDAY AND CHRISTMAS DAY) SCHEDULE REQUIREMENTS & PINCHPOINTS

Hampstead Heath, South End Green to Canada Water Bus Station		Canada Water Bus Station to Hampstead Heath, South End Green			
First departure no later than 0500.		First departure no later than 0530.			
0455 - 0700	Every 20 minutes	0525 - 0650	Every 20 minutes		
0701 - 0800	Every 15 minutes	0651 - 0750	Every 15 minutes		
0801 - 0005	Every 12 minutes	0751 - 0020	Every 12 minutes		
Last departure no earlier than 2400.		Last departure no earlier than 0015.			
Pinchpoints					
Elephant & Castle, London Road	1005 - 1140	12 minutes	Euston Station, Eversholt Street	1010 - 1145	12 minutes

Tenderers must identify the cost of the Boxing Day element of this service separately.

3.4) NIGHTLY SCHEDULE REQUIREMENTS

Tottenham Court Road Station, New Oxford Street to Thamesmead, Titmuss Avenue		Thamesmead, Disraeli Close to Tottenham Court Road Station, Earnshaw Street			
First departure no later than 0050.		First departure no later than 2400.			
0045 - 0455	Every 30 minutes	2355 - 0435	Every 30 minutes		
Last departure no earlier than 0450.		Last departure no earlier than 0430.			

Tenderers must identify the cost of the Nightly element of this service separately.

4) OPERATIONAL CONSIDERATIONS

- 4.1) Route No. 1 should interwork with Route No. N1 to form a seamless 24 hour service between Holborn Station and Surrey Quays Station.
- 4.2) Route No. 1 should interwork with Route No. 68 between Euston Station, Eversholt Street and Elephant & Castle, London Road during all periods apart from the Mondays to Fridays peaks.
- 4.3) Route Nos. 1 & N1 could suffer from unpredictable traffic delays in the Camden Town, Euston, Aldwych, Waterloo, Elephant & Castle and Canada Water areas.
- 4.4) The Aylesbury Estate in Walworth is one of the largest public housing estates in Europe and covers an area of more than 28 hectares. The Aylesbury Estate is currently undergoing major regeneration involving the phased demolition of all existing buildings and new-build re-development, increasing density from 2,758 homes to over 4,200 homes. There will also be a new library, new community centres, a new health centre, a new early years facility, sport facilities and new public spaces, squares and play parks. Construction work commenced in 2010 and will be carried out in four phases, leading to an incremental decant and demolition of the estate, with the overall regeneration estimated to be completed in 2036. This is expected to increase demand on the bus network in the surrounding area.
- 4.5) The Heygate Estate was a large housing estate in Walworth comprising of 1,214 homes in close proximity to Aylesbury Estate. The Heygate Estate was demolished between April 2011 and July 2014 as part of the urban regeneration of the Elephant & Castle area. The wider redevelopment of Elephant and Castle will provide a diverse new town centre incorporating housing (at least 5,000 new and replacement homes are being built), restaurants, shops, a university, workspace, leisure and cultural facilities, transport infrastructure and acres of new public realm. The two main developments at the heart of the regeneration are Elephant Park and the new town centre which will replace the Elephant and Castle shopping centre. Elephant Park is a mixed-use development and construction commenced in July 2014. There will be around 3,000 new homes (including the recently completed Trafalgar Place, South Gardens and West Grove) and a major new central London park. The first part of the park is already open and work is progressing on the next phase of the development which will provide around 50 new shops, restaurants and cafes. Completion will be in 2025. The new town centre is being brought forward in three main phases. The first phase has already completed at Elephant Central. The second phase commenced with the demolition of the existing shopping centre site in October 2020 and construction on site is now underway, targeted to complete in 2026. The third phase will commence on the site of the London College of Communication after the College has moved to its new building within phase two and will take a further four years to complete with an estimate completion in 2030. This is expected to increase demand on the bus network in the surrounding area.

4) OPERATIONAL CONSIDERATIONS - continued

4.6) The Canada Water Masterplan is a partnership between British Land, Southwark Council and the local community to create an outstanding new town centre for Southwark. Canada Water is identified in the Mayor's London Plan as an Opportunity Area (OA). The Canada Water Masterplan covers 53 acres and is expected deliver up to 3,000 new homes, two million square foot of workspace and one million square foot of retail, leisure, entertainment and community space including proposed health and social infrastructure and educational uses for all ages. Details include the following:

- *12 acres of new open space, including a 3.5-acre park, a new town square, the first new high street in London for 100 years and 16 new streets.

- *a new health facility

- *a new police hub.

- * three new buildings which will include 265 new homes, a new leisure centre, new public spaces and 330,000 sq ft of workspace. Building A1 will provide both residential and workspace, building A2 will provide workspace and the new leisure centre, both buildings A1 and A2 will provide a small amount of retail at ground floor level and building K1 will be wholly residential.

The site includes Surrey Quays Shopping Centre, Surrey Quays Leisure Park, the Printworks and the former Dock Offices courtyard.

Phase 1 of the masterplan is already under construction and is expected to be complete in 2024.

Construction work will be carried out in phases over a period of approximately 15 years. Therefore, the whole masterplan is expected to be complete by the mid-2030s.

4) OPERATIONAL CONSIDERATIONS - continued

4.7) The central section of the Elizabeth line between Paddington and Abbey Wood opened on 24th May 2022 adding nine new stations to the TfL network (Bond Street will open later in 2022). The frequency between Paddington and Abbey Wood is initially 12 trains per hour on Mondays to Saturdays from 0630 to 2300. All services from Reading and Heathrow Airport to Paddington and from Shenfield to Liverpool Street operating as TfL Rail are rebranded to the Elizabeth line. The Elizabeth line will operate as three separate railways until autumn 2022 as follows:

1. Reading/Heathrow Airport to Paddington (existing mainline station)
2. Paddington (new Elizabeth line station) via Liverpool Street (new Elizabeth line station) to Abbey Wood
3. Liverpool Street (existing mainline station) to Shenfield

From autumn 2022, services from Reading and Heathrow Airport will operate through to Abbey Wood and services from Shenfield will operate through to Paddington as they will connect with central tunnels. The frequency between Paddington and Whitechapel will be increased to 22 trains per hour during peak times.

By May 2023, the separate sections of the Elizabeth line will be fully connected and services will run to the final timetable. The frequency between Paddington and Whitechapel will be increased to 24 trains per hour during peak times.

There is potential for a change in passenger demand on Route Nos. 1 & N11 once the Elizabeth line becomes fully operational. A review, post opening of the Elizabeth line, will be undertaken if required.

5) ROUTE RECORD, CURRENT PERFORMANCE, QSI BY TIME OF DAY, IBUS MILEAGE & QSI POINTS

- 5.1) ROUTE RECORD
As per Busnet printout.
- 5.2) CURRENT PERFORMANCE
As per current print out.
- 5.3) QSI BY TIME OF DAY
As per current print out.
- 5.4) IBUS MILEAGE & QSI POINTS
As per current print out.

LONDON BUSES - ROUTE DESCRIPTION

ROUTE 1: Hampstead Heath, South End Green - Canada Water Station

STREETS TRAVERSED

Towards Canada Water Station: South End Road, South End Green [eastern Arm], Constantine Road, Pond Street, Haverstock Hill, Rossllyn Hill, Pond Street, Haverstock Hill, Chalk Farm Road, Castlehaven Road, Hawley Road, Camden Street, Camden Road, Bayham Street, Crowndale Road, Eversholt Street, Upper Woburn Place, Euston Square, Eversholt Street, Tavistock Square, Upper Woburn Place, Woburn Place, Tavistock Square, Southampton Row, Russell Square, Woburn Place, Southampton Row, High Holborn, Kingsway, Aldwych, Kingsway, Aldwych, Lancaster Place, Upper Ground, Waterloo Road, Stamford Street, Cornwall Road, Exton Street, Waterloo Road, St George's Circus, London Road, Elephant and Castle, New Kent Road, Bricklayer's Arms Roundabout, Tower Bridge Road, Grange Road, Southwark Park Road, Galleywall Road, Southwark Park Road, Galleywall Road, Rotherhithe New Road, Galleywall Road, Rotherhithe New Road, Rotherhithe Old Road, Lower Road, Surrey Quays Road, Canada Water Bus Station, Surrey Quays Road, Lower Road, Surrey Quays Road, Canada Water Bus Station

Towards Hampstead Heath, South End Green: Canada Water Bus Station, Surrey Quays Road, Lower Road, Surrey Quays Shopping Centre Access Road, Deal Porters Way, Deal Porters Wa, Redriff Road, Lower Road, Rotherhithe New Road, Galleywall Road, Southwark Park Road, Grange Road, Tower Bridge Road, Grange Road, Tower Bridge Road, Bricklayer's Arms Roundabout, Bricklayer's Arms, New Kent Road, Elephant and Castle, London Road, St George's Circus, Westminster Bridge Road, Waterloo Road, Tenison Way Bus Station, Tenison Way, Concert Hall Approach, Waterloo Road, Lancaster Place, Aldwych, Kingsway, Southampton Row, High Holborn, Kingsway, Southampton Row, Russell Square, Woburn Place, Tavistock Square, Upper Woburn Place, Euston Square, Eversholt Street, Camden High Street, Greenland Road, Camden High Street, Chalk Farm Road, Haverstock Hill, Rossllyn Hill, Pond Street, South End Road, South End Green [eastern Arm], Constantine Road, Pond Street, South End Road

AUTHORISED STANDS, CURTAILMENT POINTS, & BLIND DESCRIPTIONS

Please note that only stands, curtailment points, & blind descriptions as detailed in this contractual document may be used.

Hampstead Heath, South End Green [west]

Public stand for two buses on east side of South End Road, commencing 2 metres north of junction with Pond Street and extending 20 metres north.

Buses proceed from South End Road, South End Green [eastern Arm], Constantine Road, Pond Street, South End Road to stand.

Set down in South End Road, At Stop X (37391 - South End Green).

AVAILABILITY:	At any time.
OPERATING RESTRICTIONS:	No more than 2 buses on Route 1 should be scheduled to stand at any one time.
MEAL RELIEFS:	No meal relief vehicles to stand at any time.
FERRY VEHICLES:	No ferry vehicles to park on stand at any time.
BLIND DISPLAY:	Hampstead Heath.

Aldwych, East Arm

AVAILABILITY:	At any time.
OPERATING RESTRICTIONS:	Turning location only
MEAL RELIEFS:	No meal relief vehicles to stand at any time.
FERRY VEHICLES:	No ferry vehicles to park on stand at any time.
BLIND DISPLAY:	Aldwych.

Waterloo, Concert Hall Approach

Public stand for 3 buses in marked bays on north side of Concert Hall Approach.

MEAL RELIEFS:	No meal relief vehicles to stand at any time.
FERRY VEHICLES:	No ferry vehicles to park on stand at any time.
BLIND DISPLAY:	Waterloo.
OTHER INFORMATION:	Unscheduled curtailments only.

Elephant & Castle, Lambeth Road

OPERATING RESTRICTIONS:	Unscheduled curtailments only
MEAL RELIEFS:	No meal relief vehicles to stand at any time.
FERRY VEHICLES:	No ferry vehicles to park on stand at any time.
BLIND DISPLAY:	Elephant&Castle.

Elephant & Castle

OPERATING RESTRICTIONS: **Unscheduled curtailments only**
MEAL RELIEFS: No meal relief vehicles to stand at any time.
FERRY VEHICLES: No ferry vehicles to park on stand at any time.
BLIND DISPLAY: Elephant&Castle.

Bricklayers Arms, Bartholomew Street

Public stand for two buses on south side of Bartholomew Street, commencing opposite number 21 and extending 24 metres east.

MEAL RELIEFS: No meal relief vehicles to stand at any time.
FERRY VEHICLES: No ferry vehicles to park on stand at any time.
BLIND DISPLAY: Bricklayers Arms.
OTHER INFORMATION: Unscheduled curtailments only.

Surrey Quays Station

OPERATING RESTRICTIONS: **Unscheduled curtailments only**
MEAL RELIEFS: No meal relief vehicles to stand at any time.
FERRY VEHICLES: No ferry vehicles to park on stand at any time.
BLIND DISPLAY: Surrey Quays.

Southwark Park Road

OPERATING RESTRICTIONS: **Unscheduled curtailments only**
MEAL RELIEFS: No meal relief vehicles to stand at any time.
FERRY VEHICLES: No ferry vehicles to park on stand at any time.
BLIND DISPLAY: Southwark Park Road.

Canada Water Bus Station

Private stand for four buses in 3 portions in bus station on the western side of Surrey Quays Road, north of the junction with Deal Porters Way.

1 - For one bus on south side of bus station, opposite Bus Stop B1, extending 12 metres north.

2 - For two buses on south side of bus station, opposite Bus Stop B2, extending 24 metres north.

3- For one bus on south side of bus station, opposite Bus Stops C extending 12 metres north.

Buses proceed from Canada Water Bus Station, Surrey Quays Road, Lower Road, Surrey Quays Road, Canada Water Bus Station to stand.

Set down in Canada Water Bus Station, at Alighting Point Stop D (BP2390 - Canada Water Bus Station) and pick up in Canada Water Bus Station, at Stop C (BP2391 - Canada Water Bus Station).

AVAILABILITY:	At any time.
OPERATING RESTRICTIONS:	No more than 2 buses on Route 1 should be scheduled to stand at any one time.
MEAL RELIEFS:	No meal relief vehicles to stand at any time.
FERRY VEHICLES:	No ferry vehicles to park on stand at any time.
BLIND DISPLAY:	Canada Water.
OTHER INFORMATION:	Buses on route 1 should use the stand located opposite bus stop B2. LBSL toilet facilities available 24 hours a day.

LONDON BUSES - ROUTE DESCRIPTION

ROUTE N1: Tottenham Court Road Station - Thamesmead, Boiler House

STREETS TRAVERSED

Towards Thamesmead, Boiler House: Earnshaw Street, New Oxford Street, Bloomsbury Way, Vernon Place, Southampton Row, Kingsway, Aldwych, Lancaster Place, Waterloo Bridge, Waterloo Road, St George's Circus, London Road, Elephant and Castle, New Kent Road, Bricklayer's Arms Roundabout, Tower Bridge Road, Grange Road, Southwark Park Road, Galleywall Road, Rotherhithe New Road, Rotherhithe Old Road, Lower Road, Surrey Quays Shopping Centre Access Road, Deal Porters Wa, Redriff Road, Lower Road, Evelyn Street, Creek Road, Greenwich Church Street, College Approach, King William Walk, Romney Road, Trafalgar Road, Woolwich Road, Horn Lane Roundabout, Woolwich Road, Woolwich Church Street, Woolwich High Street, John Wilson Street, Castile Road, Monk Street, Calderwood Street, Thomas Street, Woolwich New Road, Plumstead Road, Plumstead High Street, Bostall Hill, Basildon Road, Mcleod Road, Harrow Manor Way, Harrow Manor Way Roundabout, Harrow Manor Way, Carlyle Road, Boiler House Roundabout, Crossway, Summerton Way Roundabout, Crossway, Central Way, Thamesmere Drive Roundabout, Central Way, Thamesmere Drive Roundabout, Thamesmere Drive, Turning Circle, Thamesmere Drive, Thamesmere Drive Roundabout, Bentham Road, Boiler House Roundabout, Carlyle Road, Harrow Manor Way, Carlyle Road

Towards Tottenham Court Road Station: Carlyle Road, Boiler House Roundabout, Bentham Road, Thamesmere Drive Roundabout, Thamesmere Drive, Turning Circle, Thamesmere Drive, Thamesmere Drive Roundabout, Central Way, Greenhaven Drive Roundabout, Crossway, Summerton Way Roundabout, Crossway, Boiler House Roundabout, Carlyle Road, Harrow Manor Way, Lensbury Way Roundabout, Harrow Manor Way, Mcleod Road, Basildon Road, Bostall Hill, Plumstead High Street, Plumstead Road, Beresford Street, Woolwich High Street, Woolwich Church Street, Woolwich Road, Trafalgar Road, Romney Road, Nelson Road, Greenwich Church Street, Creek Road, Evelyn Street, Bestwood Street, Bush Road, Rotherhithe New Road, Galleywall Road, Southwark Park Road, Grange Road, Tower Bridge Road, Bricklayer's Arms Roundabout, Bricklayer's Arms, New Kent Road, Elephant and Castle, London Road, St George's Circus, Westminster Bridge Road, Waterloo Road, Tenison Way Bus Station, Tenison Way, Waterloo Road, Waterloo Bridge, Lancaster Place, Aldwych, Kingsway, High Holborn, St Giles High Street, Earnshaw Street

AUTHORISED STANDS, CURTAILMENT POINTS, & BLIND DESCRIPTIONS

Please note that only stands, curtailment points, & blind descriptions as detailed in this contractual document may be used.

Tottenham Court Road Stn, Earnshaw Street

Public stand for three buses on west side of Earnshaw Street, opposite centre line of Bucknall Street and extending 28 metres south.

Buses proceed from Earnshaw Street to stand.

Set down in Earnshaw Street, at Alighting Point (BP883 - Tottenham Court Road) and pick up in New Oxford Street, at Stop Z (14456 - New Oxford Street).

AVAILABILITY:	At any time.
OPERATING RESTRICTIONS:	No more than 2 buses on Route N1 should be scheduled to stand at any one time.
MEAL RELIEFS:	No meal relief vehicles to stand at any time.
FERRY VEHICLES:	No ferry vehicles to park on stand at any time.
BLIND DISPLAY:	Tottenham Court Road.
OTHER INFORMATION:	No more than two buses on Route No. N1 should be scheduled to stand at any one time.

Aldwych, East Arm (from Thamesmead, Boiler House)

Buses proceed from Aldwych, Strand, Melbourne Place, Aldwych.

Set down in Aldwych, At Stop F (36599 - Aldwych / Kingsway) and pick up in Aldwych, At Stop S (BP6517 - Aldwych / Drury Lane).

AVAILABILITY:	At any time.
OPERATING RESTRICTIONS:	Turning Point Only - Buses must not stand
MEAL RELIEFS:	No meal relief vehicles to stand at any time.
FERRY VEHICLES:	No ferry vehicles to park on stand at any time.
BLIND DISPLAY:	Aldwych.

Waterloo, Concert Hall Approach (from Thamesmead, Boiler House)

Public stand for 3 buses in marked bays on north side of Concert Hall Approach.

Buses proceed from Tenison Way Bus Station, York Road, Chicheley Street, Belvedere Road, Concert Hall Approach to stand.

Set down in Tenison Way, at Stop K (BP1619 - Waterloo Station / Tenison Way) and pick up in Waterloo Road, at Stop E (2593 - Waterloo Station / Waterloo Road).

AVAILABILITY:	At any time.
OPERATING RESTRICTIONS:	Unscheduled curtailments only.
MEAL RELIEFS:	No meal relief vehicles to stand at any time.
FERRY VEHICLES:	No ferry vehicles to park on stand at any time.
BLIND DISPLAY:	Waterloo.

Elephant & Castle, Lambeth Road (from Thamesmead, Boiler House)

Buses proceed from London Road, Lambeth Road, St George's Road, Westminster Bridge Road, St George's Circus, London Road.

Set down in London Road, at stop A (BP3718 - Elephant & Castle / London Road) and pick up in London Road, at stop E (26212 - Elephant & Castle / London Road).

AVAILABILITY:	At any time.
OPERATING RESTRICTIONS:	Turning Point Only - Buses must not stand
MEAL RELIEFS:	No meal relief vehicles to stand at any time.
FERRY VEHICLES:	No ferry vehicles to park on stand at any time.
BLIND DISPLAY:	Elephant & Castle .

Bricklayers Arms, Bartholomew Street (from Tottenham Court Road Station)

Public stand for two buses on south side of Bartholomew Street, commencing opposite number 21 and extending 24 metres east.

From Tottenham Court Road Station

Buses proceed from New Kent Road, Bricklayer's Arms Roundabout, Great Dover Street, Bartholomew Street to stand.

Set down in New Kent Road, at Stop BC (34289 - Bricklayer's Arms / New Kent Road) and pick up in New Kent Road, at Stop BS (34288 - Bricklayer's Arms / New Kent Road).

From THAMESMEAD, BOILER HOUSE

Buses proceed from Tower Bridge Road, Bricklayer's Arms Roundabout, Great Dover Street, Bartholomew Street to stand.

Set down in Tower Bridge Road, at Stop BJ (4610 - Bricklayer's Arms / Tower Bridge Road) and pick up in New Kent Road, at Stop BC (34289 - Bricklayer's Arms / New Kent Road).

AVAILABILITY:	At any time.
OPERATING RESTRICTIONS:	Unscheduled curtailments only.
MEAL RELIEFS:	No meal relief vehicles to stand at any time.
FERRY VEHICLES:	No ferry vehicles to park on stand at any time.
BLIND DISPLAY:	Bricklayer's Arms.

Surrey Quays Station (from Tottenham Court Road Station)

Buses proceed from Lower Road, Rotherhithe New Road.

Set down in Lower Road, at Stop M (25994 - Lower Road / Surrey Quays Station) and pick up in Rotherhithe New Road, at Stop Q (BP2413 - Warndon Street).

AVAILABILITY:	At any time.
OPERATING RESTRICTIONS:	Turning Point Only - Buses must not stand
MEAL RELIEFS:	No meal relief vehicles to stand at any time.
FERRY VEHICLES:	No ferry vehicles to park on stand at any time.
BLIND DISPLAY:	Surrey Quays.

Greenwich, Cutty Sark (from Tottenham Court Road Station)

Public stand for two buses on east side of King William Walk, commencing 3 metres north of a point opposite the centre of Turnpin Lane and extending 23 metres north.

From Tottenham Court Road Station

Buses proceed from Creek Road, Greenwich Church Street, College Approach, King William Walk to stand.

Set down in Creek Road, at Stop A (BP2672 - Greenwich Tn Ctr / Cutty Sark Stn) and pick up in Greenwich Church Street, at Stop B (25906 - Greenwich Church Street).

From THAMESMEAD, BOILER HOUSE

Buses proceed from Greenwich Church Street, College Approach, King William Walk to stand.

Set down in Greenwich Church Street, at Stop B (25906 - Greenwich Church Street) and pick up in Romney Road, at Stop F (8624 - National Maritime Museum).

AVAILABILITY:	At any time.
OPERATING RESTRICTIONS:	Unscheduled curtailments only.
MEAL RELIEFS:	No meal relief vehicles to stand at any time.
FERRY VEHICLES:	No ferry vehicles to park on stand at any time.
BLIND DISPLAY:	Greenwich, Cutty Sark.

Charlton, Anchor & Hope Lane (from Tottenham Court Road Station)

Public stand for two buses on east side of Anchor & Hope Lane, commencing 89 metres south of and opposite Bugsbys Way extending 20 metres north.

From Tottenham Court Road Station

Buses proceed from Woolwich Road, Anchor and Hope Lane to stand.

From THAMESMEAD, BOILER HOUSE

Buses proceed from Woolwich Road, Anchor and Hope Lane to stand.

Set down in Woolwich Road, at Alighting Point (18828 - Charlton Station / Woolwich Road) and pick up in Woolwich Road, at Stop E (26701 - Charlton Station / Woolwich Road).

AVAILABILITY:	At any time.
OPERATING RESTRICTIONS:	Unscheduled curtailments only.
MEAL RELIEFS:	No meal relief vehicles to stand at any time.
FERRY VEHICLES:	No ferry vehicles to park on stand at any time.
BLIND DISPLAY:	Charlton.
OTHER INFORMATION:	Request stops are sited in Gallions Road and Bugsbys Way.

Woolwich Arsenal Station (from Tottenham Court Road Station)

Buses proceed from Woolwich New Road, Vincent Road, Burrage Road, Plumstead Road.

Set down in Woolwich New Road, Q (BP5480 - Woolwich Arsenal Station) and pick up in Plumstead Road, at Stop D (BP4397 - Woolwich Station).

AVAILABILITY:

At any time.

OPERATING RESTRICTIONS:

Turning Point Only - Buses must not stand

MEAL RELIEFS:

No meal relief vehicles to stand at any time.

FERRY VEHICLES:

No ferry vehicles to park on stand at any time.

BLIND DISPLAY:

Woolwich.

Plumstead Station (from Tottenham Court Road Station)

Public stand for one bus commencing 9 metres south east from lamp standard 15N1136 and extending 55 metres south east.

Buses proceed from Plumstead Road, Pettman Crescent, Plumstead Road to stand. Set down in Plumstead Road, at Stop C (R0385 - Maxey Road) and pick up in Plumstead Road, at Stop WM (36510 - Plumstead Road / Plumstead Station).

AVAILABILITY: At any time.
OPERATING RESTRICTIONS: Unscheduled curtailments only.
MEAL RELIEFS: No meal relief vehicles to stand at any time.
FERRY VEHICLES: No ferry vehicles to park on stand at any time.
BLIND DISPLAY: Plumstead Station.

Abbey Wood Station (from Tottenham Court Road Station)

Buses proceed from Harrow Manor Way.

Set down in Harrow Manor Way, at stop A (33045 - Harrow Manorway / Lensbury Way) and pick up in Harrow Manorway, at stop B (33040 - Harrow Manorway / Yarnton Way).

AVAILABILITY: At any time.
OPERATING RESTRICTIONS: **Turning Point Only - Buses must not stand**
MEAL RELIEFS: No meal relief vehicles to stand at any time.
FERRY VEHICLES: No ferry vehicles to park on stand at any time.
BLIND DISPLAY: Abbey Wood.

Thamesmead, Boiler House

Public stand for up to 2 buses in lay-by at Stop 34918 on west side of Carlyle Road commencing approximately 55 metres south of Boiler House Roundabout.

Buses proceed from Bentham Road, Boiler House Roundabout, Carlyle Road, Harrow Manor Way, Carlyle Road to stand.

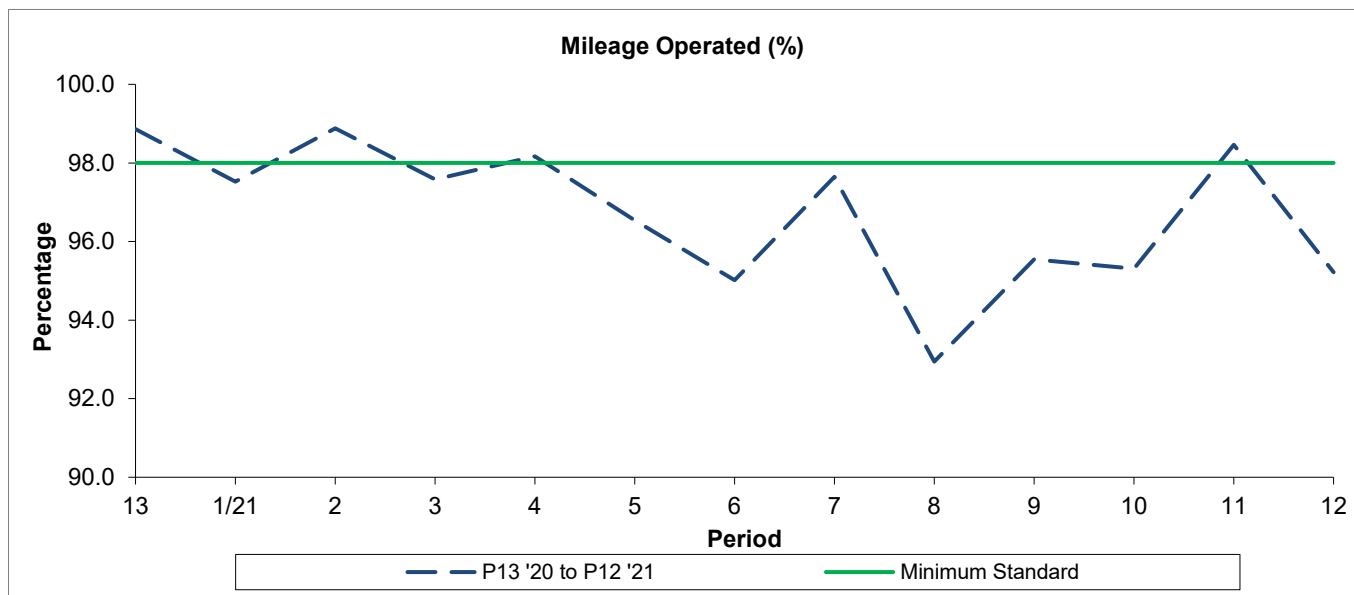
Set down in Bentham Road, SC (35926 - Titmuss Avenue) and pick up in Bentham Road, SF (35918 - Titmuss Avenue).

AVAILABILITY: At any time.
OPERATING RESTRICTIONS: No more than 2 buses on Route N1 should be scheduled to stand at any one time.
MEAL RELIEFS: No meal relief vehicles to stand at any time.
FERRY VEHICLES: No ferry vehicles to park on stand at any time.
BLIND DISPLAY: Thamesmead.
OTHER INFORMATION: Council toilet facilities available 0800-1700 (Mon-Sat).

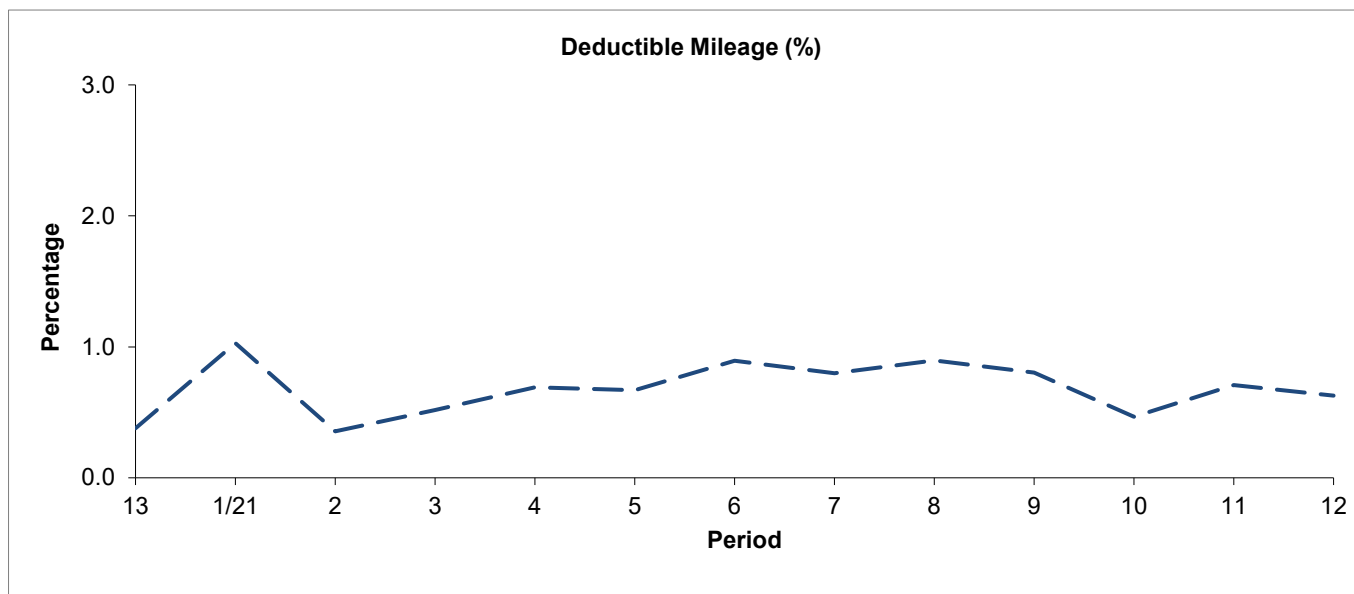
Period Trend Performance Graphs

Route 1

Mileage Performance



Period	13	1/21	2	3	4	5	6	7	8	9	10	11	12
P13 '20 to P12 '21	98.86	97.53	98.88	97.58	98.16	96.54	95.02	97.65	92.94	95.54	95.31	98.46	95.22
Minimum Standard	98.00	98.00	98.00	98.00	98.00	98.00	98.00	98.00	98.00	98.00	98.00	98.00	98.00

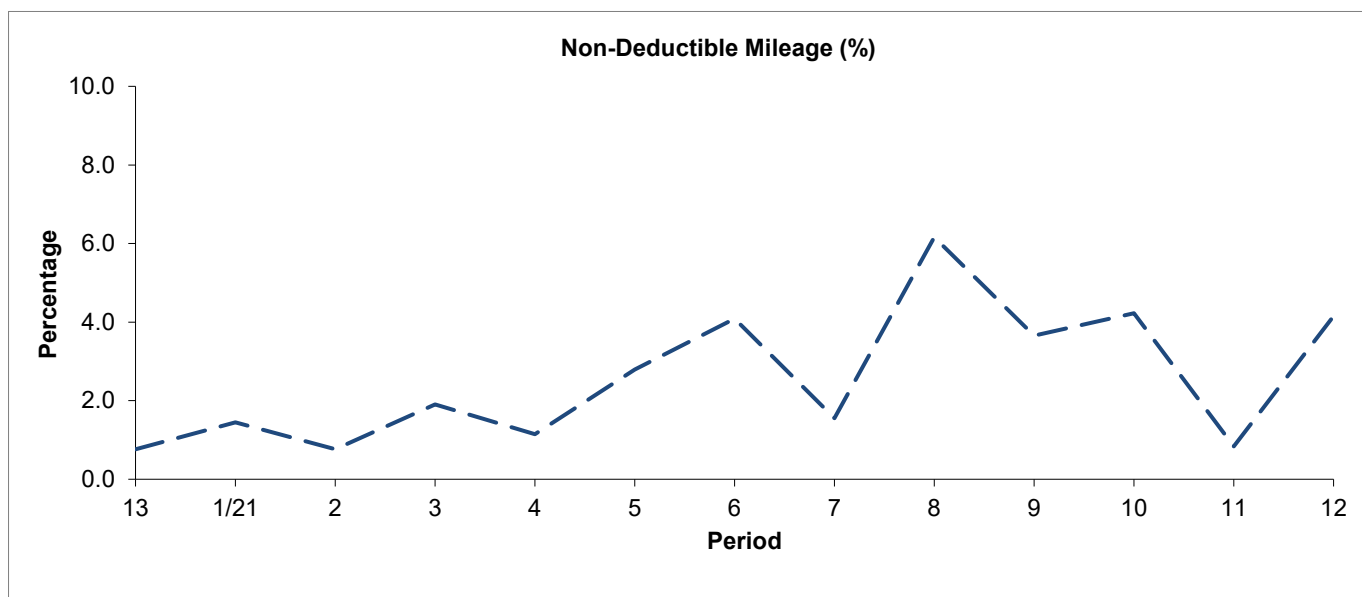


Period	13	1/21	2	3	4	5	6	7	8	9	10	11	12
P13 '20 to P12 '21	0.38	1.03	0.35	0.52	0.69	0.67	0.89	0.80	0.90	0.80	0.47	0.71	0.63

Period Trend Performance Graphs

Route 1

Mileage Performance



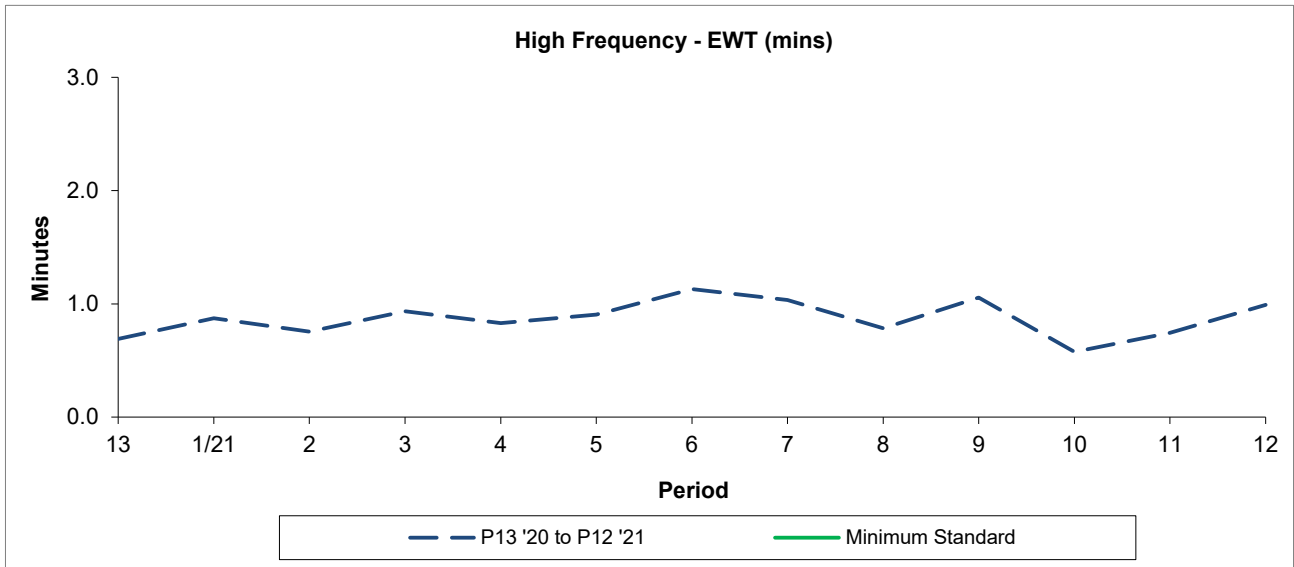
Period	13	1/21	2	3	4	5	6	7	8	9	10	11	12
P13 '20 to P12 '21	0.76	1.45	0.76	1.90	1.15	2.79	4.09	1.55	6.16	3.65	4.22	0.83	4.15

Mileage Performance figures are based on four weeks data

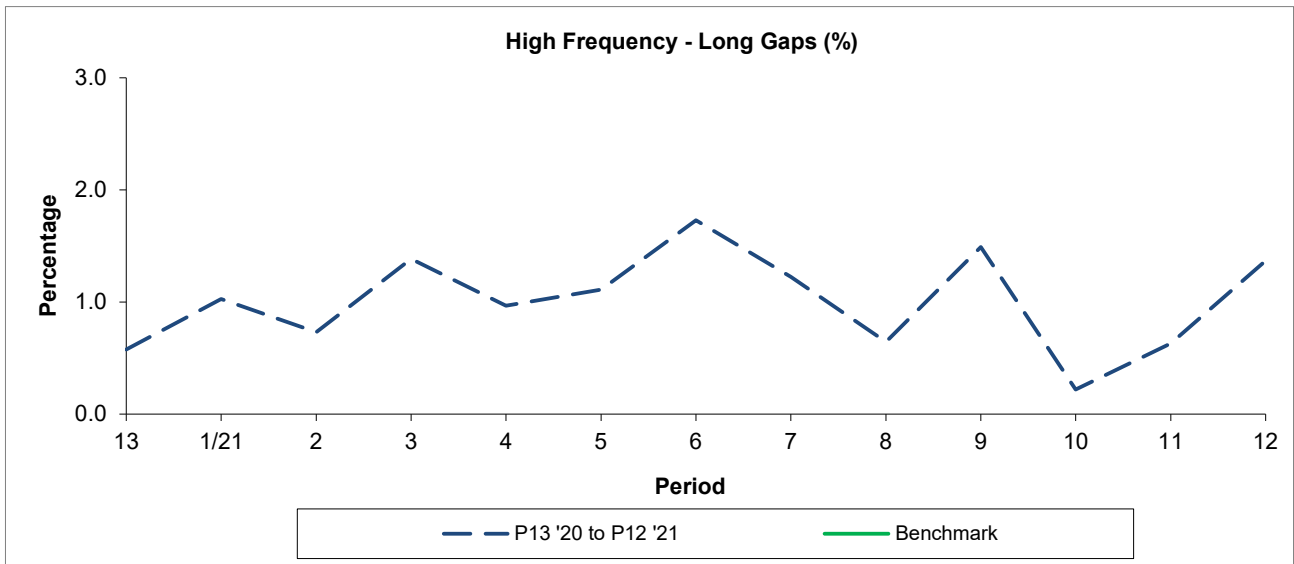
Period Trend Performance Graphs

Route 1

Reliability Performance



Period	13	1/21	2	3	4	5	6	7	8	9	10	11	12
P13 '20 to P12 '21	0.69	0.87	0.75	0.93	0.83	0.91	1.13	1.03	0.79	1.05	0.58	0.74	0.99
Minimum Standard													



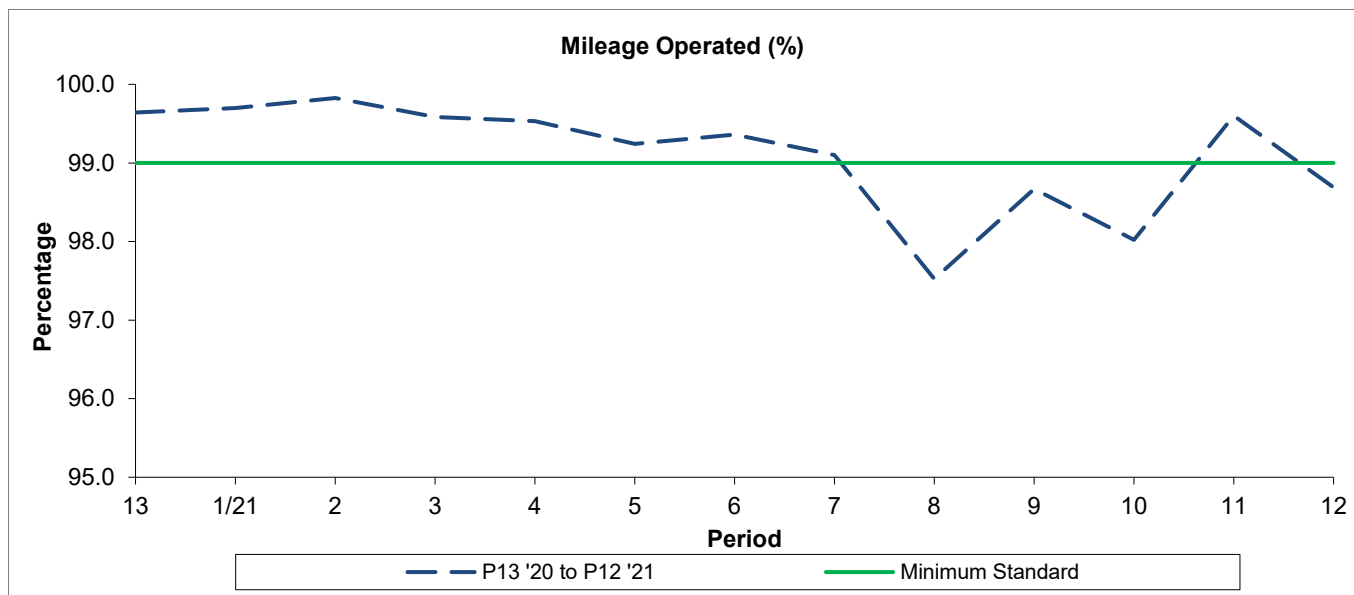
Period	13	1/21	2	3	4	5	6	7	8	9	10	11	12
P13 '20 to P12 '21	0.58	1.03	0.73	1.38	0.97	1.11	1.73	1.23	0.64	1.49	0.22	0.63	1.37
Benchmark													

Minimum Standards and Benchmarks are those applicable under the new contract.

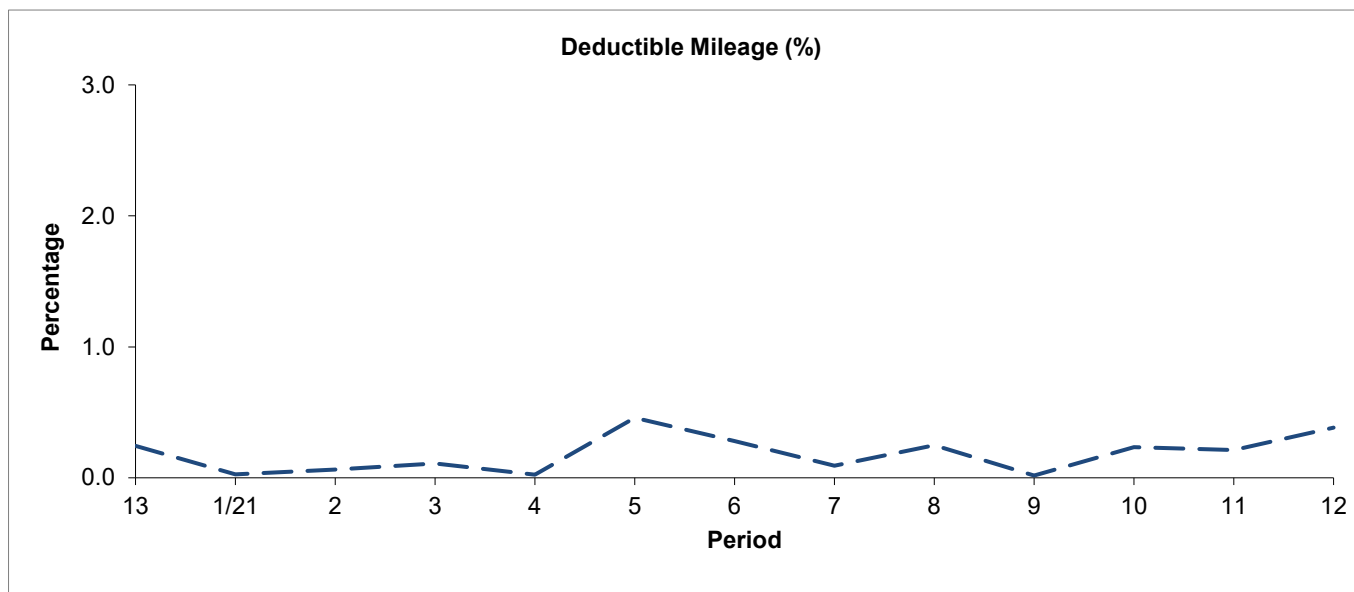
Period Trend Performance Graphs

Route N1

Mileage Performance



Period	13	1/21	2	3	4	5	6	7	8	9	10	11	12
P13 '20 to P12 '21	99.64	99.70	99.83	99.58	99.53	99.24	99.36	99.10	97.52	98.67	98.02	99.60	98.69
Minimum Standard	99.00	99.00	99.00	99.00	99.00	99.00	99.00	99.00	99.00	99.00	99.00	99.00	99.00

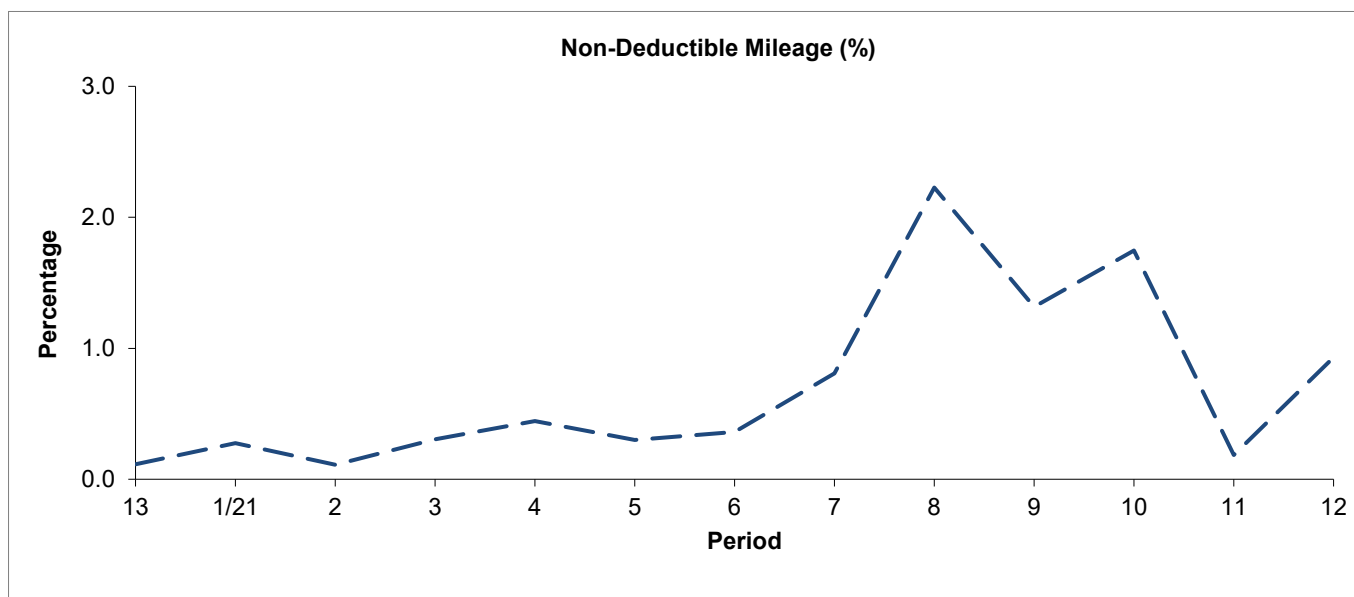


Period	13	1/21	2	3	4	5	6	7	8	9	10	11	12
P13 '20 to P12 '21	0.24	0.03	0.06	0.11	0.02	0.46	0.28	0.09	0.25	0.02	0.23	0.21	0.38

Period Trend Performance Graphs

Route N1

Mileage Performance



Period	13	1/21	2	3	4	5	6	7	8	9	10	11	12
P13 '20 to P12 '21	0.11	0.28	0.11	0.31	0.44	0.30	0.36	0.81	2.23	1.32	1.75	0.19	0.93

Mileage Performance figures are based on four weeks data

Detailed QSI Report

Route 1

Full iBus results by Time of Day

Quarter 4 / 2021 to Quarter 3 / 2022 (09/01/2021 to 07/01/2022)

All days

(Day Routes 05:00 - 24:00, Night Routes 00:00 - 05:00)

Time Range	Expected Buses	Observed Buses	Observed Buses (%)	SWT (mins)	EWT (mins)	AWT (mins)	Probability of Waiting < 10 mins (%)	Probability of Waiting 10-20 mins (%)	Probability of Waiting 20-30 mins (%)	Probability of Waiting > 30 mins (%)	Long Gaps (%)	Maximum Gap (mins)
05:00 - 07:00	25,905	24,859	96.0	9.4	0.7	10.1	69.9	22.3	6.8	1.0	1.0	90.6
07:00 - 10:00	78,832	78,264	99.3	4.9	0.7	5.6	86.3	13.2	0.4	0.0	0.6	60.2
10:00 - 13:00	78,673	77,415	98.4	5.1	0.7	5.8	84.4	15.1	0.5	0.0	0.4	50.1
13:00 - 16:00	79,696	77,618	97.4	5.0	0.9	6.0	82.9	15.9	1.0	0.3	1.3	83.8
16:00 - 19:00	80,431	78,491	97.6	4.9	1.0	5.9	83.7	15.0	1.0	0.3	1.4	70.4
19:00 - 22:00	72,744	72,106	99.1	5.4	0.8	6.2	81.9	17.2	0.7	0.2	0.8	69.4
22:00 - 24:00	44,630	44,622	100.0	6.0	0.6	6.5	78.5	20.8	0.7	0.1	0.3	52.8
All Locations Summary	460,911	453,375	98.4	5.2	0.8	6.1	83.2	15.6	1.0	0.2	0.9	90.6

Mondays to Fridays

(Day Routes 05:00 - 24:00, Night Routes 00:00 - 05:00)

Time Range	Expected Buses	Observed Buses	Observed Buses (%)	SWT (mins)	EWT (mins)	AWT (mins)	Probability of Waiting < 10 mins (%)	Probability of Waiting 10-20 mins (%)	Probability of Waiting 20-30 mins (%)	Probability of Waiting > 30 mins (%)	Long Gaps (%)	Maximum Gap (mins)
05:00 - 07:00	20,579	19,579	95.1	9.1	0.8	9.9	71.4	20.9	6.7	1.0	0.7	90.6
07:00 - 10:00	58,790	58,561	99.6	4.7	0.7	5.5	87.3	12.3	0.4	0.0	0.7	38.7
10:00 - 13:00	56,578	55,385	97.9	5.0	0.7	5.7	85.3	14.1	0.5	0.1	0.5	50.1
13:00 - 16:00	57,792	56,041	97.0	4.9	1.0	5.9	83.9	14.8	1.0	0.3	1.4	82.9
16:00 - 19:00	58,242	56,596	97.2	4.8	1.1	5.8	84.4	14.2	1.1	0.3	1.6	70.4
19:00 - 22:00	51,461	51,168	99.4	5.3	0.8	6.1	82.5	16.6	0.8	0.2	0.8	69.4
22:00 - 24:00	31,053	30,893	99.5	5.9	0.6	6.6	78.2	21.0	0.8	0.1	0.3	52.8
All Locations Summary	334,495	328,223	98.1	5.1	0.9	6.0	84.1	14.7	1.0	0.2	1.0	90.6

Saturdays

(Day Routes 05:00 - 24:00, Night Routes 00:00 - 05:00)

Time Range	Expected Buses	Observed Buses	Observed Buses (%)	SWT (mins)	EWT (mins)	AWT (mins)	Probability of Waiting < 10 mins (%)	Probability of Waiting 10-20 mins (%)	Probability of Waiting 20-30 mins (%)	Probability of Waiting > 30 mins (%)	Long Gaps (%)	Maximum Gap (mins)
05:00 - 07:00	3,118	3,042	97.6	11.4	0.5	12.0	59.6	29.3	9.5	1.7	1.0	60.2
07:00 - 10:00	9,878	9,725	98.5	5.6	0.5	6.1	83.3	16.5	0.3	0.0	0.1	42.6
10:00 - 13:00	11,023	11,013	99.9	5.0	0.6	5.6	85.8	14.0	0.2	0.0	0.2	34.5
13:00 - 16:00	10,829	10,551	97.4	5.0	1.1	6.1	81.8	16.4	1.2	0.5	1.7	83.8
16:00 - 19:00	10,920	10,738	98.3	5.0	0.9	5.9	84.1	15.0	0.8	0.1	0.9	55.3
19:00 - 22:00	9,939	9,828	98.9	5.4	0.7	6.1	82.0	17.4	0.5	0.1	0.4	59.2
22:00 - 24:00	6,096	6,082	99.8	6.0	0.6	6.5	78.4	21.0	0.6	0.0	0.2	35.9
All Locations Summary	61,803	60,979	98.7	5.4	0.8	6.1	82.6	16.3	0.9	0.2	0.8	83.8

Sundays and Bank Holidays

(Day Routes 05:00 - 24:00, Night Routes 00:00 - 05:00)

Time Range	Expected Buses	Observed Buses	Observed Buses (%)	SWT (mins)	EWT (mins)	AWT (mins)	Probability of Waiting < 10 mins (%)	Probability of Waiting 10-20 mins (%)	Probability of Waiting 20-30 mins (%)	Probability of Waiting > 30 mins (%)	Long Gaps (%)	Maximum Gap (mins)
05:00 - 07:00	2,208	2,238	101.4	10.1	0.3	10.3	66.1	29.3	4.1	0.5	4.3	38.7
07:00 - 10:00	10,164	9,978	98.2	6.7	0.5	7.2	74.8	24.3	0.8	0.1	0.1	60.2
10:00 - 13:00	11,072	11,017	99.5	6.0	0.6	6.6	77.7	21.6	0.7	0.0	0.1	29.6
13:00 - 16:00	11,075	11,026	99.6	6.0	0.6	6.6	77.6	21.8	0.6	0.1	0.3	59.9
16:00 - 19:00	11,269	11,157	99.0	6.0	0.5	6.5	78.2	21.2	0.6	0.1	0.3	42.2
19:00 - 22:00	11,344	11,110	97.9	5.9	0.7	6.7	77.9	21.0	0.8	0.2	0.6	54.0
22:00 - 24:00	7,481	7,647	102.2	6.0	0.4	6.4	80.1	19.6	0.3	0.0	0.1	41.1
All Locations Summary	64,613	64,173	99.3	6.1	0.6	6.7	77.3	21.8	0.8	0.1	0.4	60.2

Detailed QSI Report

Route N1

Full iBus results by Time of Day

Quarter 4 / 2021 to Quarter 3 / 2022 (09/01/2021 to 07/01/2022)

All days

(Day Routes 05:00 - 24:00, Night Routes 00:00 - 05:00)

Time Range	Expected Buses	Observed Buses	Observed Buses (%)	Linked Buses (%)	On Time (%)	Non Arrival / Not Linked (%)	Early (%)	Late (%)
00:00 - 05:00	78,757	78,233	99.3	99.1	92.7	0.8	0.5	6.0
All Locations Summary	78,757	78,233	99.3	99.1	92.7	0.8	0.5	6.0

Mondays to Fridays

(Day Routes 05:00 - 24:00, Night Routes 00:00 - 05:00)

Time Range	Expected Buses	Observed Buses	Observed Buses (%)	Linked Buses (%)	On Time (%)	Non Arrival / Not Linked (%)	Early (%)	Late (%)
00:00 - 05:00	48,986	48,675	99.4	99.3	94.2	0.6	0.4	4.9
All Locations Summary	48,986	48,675	99.4	99.3	94.2	0.6	0.4	4.9

Saturdays

(Day Routes 05:00 - 24:00, Night Routes 00:00 - 05:00)

Time Range	Expected Buses	Observed Buses	Observed Buses (%)	Linked Buses (%)	On Time (%)	Non Arrival / Not Linked (%)	Early (%)	Late (%)
00:00 - 05:00	14,053	13,946	99.2	99.0	91.7	0.9	0.6	6.8
All Locations Summary	14,053	13,946	99.2	99.0	91.7	0.9	0.6	6.8

Sundays and Bank Holidays

(Day Routes 05:00 - 24:00, Night Routes 00:00 - 05:00)

Time Range	Expected Buses	Observed Buses	Observed Buses (%)	Linked Buses (%)	On Time (%)	Non Arrival / Not Linked (%)	Early (%)	Late (%)
00:00 - 05:00	15,718	15,612	99.3	98.7	90.2	1.3	0.7	7.8
All Locations Summary	15,718	15,612	99.3	98.7	90.2	1.3	0.7	7.8

Transport for London - Live Mileage List

Route: 1

Service Change: 51565

Date: 21/08/2021

Hampstead Heath
Waterloo

Reason for Issue

QSI points are highlighted.

OUT DIRECTION				
Timing Point Code	Stop Number	Stop Name	Metres	Miles
HHTHSE	29927	Royal Free Hospital		
	12053	Rosslyn Hill	214	0.13
	12058	Haverstock Hill / Pond Street	235	0.15
BZPKSN	12060	Belsize Park Station	223	0.14
	BP2006	Downside Crescent	138	0.09
	34953	Upper Park Road	212	0.13
	37435	Haverstock Hill / Steele's Village	389	0.24
CHFMSN	37436	Chalk Farm Station	297	0.18
	11994	Chalk Farm Road / Morrisons	354	0.22
	33259	Hawley Road	527	0.33
	33096	Camden Gardens	220	0.14
CDTNSN	3517	Camden Town Station / Camden Street	226	0.14
	33288	Camden Town Station / Bayham Street	241	0.15
	36859	Pratt Street	221	0.14
	666	Mornington Cres Stn / Camden Tn Library	411	0.26
	8343	Aldenhams Street	405	0.25
EUSTES	8341	Euston Station	339	0.21
	750	Upper Woburn Place	229	0.14
	1103	Tavistock Square	255	0.16
	8438	Russell Square	212	0.13
	8437	Southampton Row	321	0.20
	25599	Southampton Row / Theobald's Road	208	0.13
HOLBSN	26425	Kingsway / Holborn Station	356	0.22
AWCHWA	BP6517	Aldwych / Drury Lane	561	0.35
	1835	Waterloo Bridge / South Bank	649	0.40
WLOOWR	2593	Waterloo Station / Waterloo Road	505	0.31
WLOOOV	1047	The Old Vic	304	0.19
	2597	St George's Circus	297	0.18
ELEFLN	26212	Elephant & Castle / London Road	541	0.34
	26747	Elephant & Castle / New Kent Road	246	0.15
	2574	Rodney Place	312	0.19
	34289	Bricklayer's Arms / New Kent Road	474	0.29
	34290	Bricklayer's Arms / Tower Bridge Road	373	0.23
	1206	Griggs Place	250	0.16
	13644	Fendall Street	189	0.12
	1130	Spa Road	171	0.11
GRRDDR	13647	Alscot Road	189	0.12
	13649	Harris Academy	273	0.17
SPKRSJ	26204	Southwark Park Road / St James's Road	371	0.23
	26206	Anchor Street	319	0.20
	26208	Lynton Road	220	0.14
	1211	Galleywall Road / South Bermondsey Stn	210	0.13
	1212	Beamish House	171	0.11
	13626	Corbetts Lane	272	0.17
	33452	Warndon Street	217	0.13
SRQYSN	33453	Surrey Quays Station	401	0.25
	2216	Rotherhithe Police Station	386	0.24
CANWBS	BP2390	Canada Water Bus Station	462	0.29
Total Route Mileage - Out Direction			14596	9.07
			Metres	Miles

Mileages in purple font have been extracted from Route No. 168

FINAL MILEAGE TO BE CONFIRMED

th, South End Green - Canada ter Bus Station□	Tranche 845
New Contract	

BACK DIRECTION				
Timing Point Code	Stop Number	Stop Name	Metres	Miles
CANWBS	BP2391	Canada Water Bus Station		
	25923	Rotherhithe Police Station	465	0.29
	40071	Surrey Quays Shopping Centre	384	0.24
SRQYSN	13668	Surrey Quays Station	121	0.08
	BP2413	Warndon Street	553	0.34
	13627	Corbetts Lane	357	0.22
	1213	Rotherhithe New Rd / Sth Bermondsey Stn	302	0.19
	13660	Lynton Road	248	0.15
	26207	Anchor Street	195	0.12
SPKRSJ	26205	Southwark Park Road / St James's Road	289	0.18
	13650	Reverdy Road	348	0.22
GRRDDR	13648	Alscot Road	395	0.25
	1129	Spa Road	304	0.19
	1208	Grange Road / Caledonian Market	371	0.23
	4610	Bricklayer's Arms / Tower Bridge Road	182	0.11
	34288	Bricklayer's Arms / New Kent Road	515	0.32
	2573	Rodney Place	314	0.20
	33627	Elephant & Castle / New Kent Road	295	0.18
ELEFLN	BP3718	Elephant & Castle / London Road	266	0.17
	2596	St George's Circus	580	0.36
WLOOOV	1048	The Old Vic	204	0.13
WLOOTW	BP1619	Waterloo Station / Tenison Way	493	0.31
	25893	Waterloo Bridge / South Bank	236	0.15
AWCHLP	36886	Lancaster Place	532	0.33
	36599	Aldwych / Kingsway	316	0.20
HOLBSN	20908	Holborn Station	473	0.29
	477	Southampton Row / Theobald's Road	331	0.21
	BP5646	Russell Square Station	517	0.32
	29055	Tavistock Square	288	0.18
	R0739	Upper Woburn Place / Euston Road	229	0.14
EUSTES	8342	Euston Station / Eversholt Street	249	0.15
	8344	Aldenham Street	368	0.23
	667	Mornington Cr Stn / Camden Tn Library	342	0.21
	1280	Camden High Street	305	0.19
CDTNSN	325	Camden Town Station	245	0.15
	33533	Hartland Road / Camden Market	546	0.34
	37171	The Roundhouse	340	0.21
CHFMSN	37162	Chalk Farm Station	207	0.13
	37163	Steele's Road / Steele's Village	362	0.22
	12059	Upper Park Road	461	0.29
BZPKSN	12057	Belsize Park Station	238	0.15
	12054	Rosslyn Hill	323	0.20
	34989	Royal Free Hospital	247	0.15
HHTHSE	37391	South End Green	129	0.08
Total Route Mileage - Back Direction			14465	8.99
			Metres	Miles

Mileages in purple font have been extracted from Route No. 168
FINAL MILEAGE TO BE CONFIRMED

Transport for London - Live Mileage List

Route: N1

Service Change: 61113
Date: 26/02/2022

Tottenham Cou Street/Earnshaw ; Aver
Reason for Issue

QSI points are highlighted.

OUT DIRECTION				
Timing Point Code	Stop Number	Stop Name	Metres	Miles
TCTRNO	14456	New Oxford Street		
	29844	Museum Street	264	0.16
HOLBSN	26425	Kingsway / Holborn Station	558	0.35
AWCHWA	BP6517	Aldwych / Drury Lane	561	0.35
	1835	Waterloo Bridge / South Bank	721	0.45
WLOOWR	2593	Waterloo Station / Waterloo Road	431	0.27
	1047	The Old Vic	304	0.19
	2597	St George's Circus	297	0.18
ELEFLN	26212	Elephant & Castle / London Road	541	0.34
	26747	Elephant & Castle / New Kent Road	246	0.15
	2574	Rodney Place	312	0.19
	34289	Bricklayer's Arms / New Kent Road	474	0.29
	34290	Bricklayer's Arms / Tower Bridge Road	373	0.23
	1206	Griggs Place	250	0.16
	13644	Fendall Street	189	0.12
	1130	Spa Road	171	0.11
GRRDDR	13647	Alsot Road	189	0.12
	13649	Harris Academy	273	0.17
SPKRSJ	26204	Southwark Park Road / St James's Road	371	0.23
	26206	Anchor Street	319	0.20
	26208	Lynton Road	220	0.14
	1211	Galleywall Road / South Bermondsey Stn	210	0.13
	1212	Beamish House	171	0.11
	13626	Corbetts Lane	272	0.17
	33452	Warndon Street	217	0.13
	40071	Surrey Quays Shopping Centre	662	0.41
SRQYSN	13668	Surrey Quays Station	121	0.08
	25994	Lower Road / Surrey Quays Station	192	0.12
	25922	Lower Road / Plough Way	165	0.10
	25921	Bestwood Street	266	0.17
	2225	Deptford Park School	216	0.13
	2227	Evelyn Street / Grinstead Road	233	0.14
	915	Deptford Fire Station	280	0.17
	25916	Abinger Grove	246	0.15
	BP5455	Sayes Court Estate	265	0.16
	25913	Deptford High Street	250	0.16
	R0724	Macmillan Students Village	254	0.16
	25909	Creekside	290	0.18
	25907	Creek Road / Norman Road	202	0.13
	BP2672	Greenwich Tn Ctr / Cutty Sark Stn	223	0.14
GNCHNM	8624	National Maritime Museum	396	0.25
	13824	Trafalgar Estate	405	0.25
	13826	Trafalgar Road / Maze Hill	257	0.16
	13828	King William Lane	177	0.11
EGRNVH	34293	Vanbrugh Hill	372	0.23
	18820	Marlton Street	357	0.22
	34284	Kemsing Road	189	0.12
	26703	Rainton Road	392	0.24
	18823	Woolwich Road / Victoria Way	373	0.23
	18825	Woolwich Road / Gallions Road	249	0.15
CHARAH	26701	Charlton Station / Woolwich Road	215	0.13
	BP2408	Stone Lake Retail Park	330	0.21
	26699	Woolwich Road / Charlton Lane	159	0.10
	29851	Greenwich Trust School	226	0.14
	BP6177	Yateley Street	216	0.13
	37977	Warspite Road	285	0.18
	R0563	Frances Street	441	0.27
	26692	Kingsman Street	179	0.11
	35487	Woolwich Ferry	203	0.13
	37259	John Wilson Street / Powis Street	313	0.19
	37149	Thomas Street / Greens End	610	0.38
WOOLAS	BP5480	Woolwich Arsenal Station	214	0.13
	BP5540	Plumstead Road / Woolwich Public Market	330	0.21
	R0385	Maxeys Road	420	0.26
PLUMSN	BP1283	Plumstead Bus Garage	275	0.17
	26625	Plumstead Station	371	0.23
	1817	Lakedale Road	413	0.26
	26618	Plumstead High Street / Police Station	311	0.19
	9167	Purrett Road	242	0.15
	26613	Plumstead Corner / Church Manorway	180	0.11
	26610	Basildon Road / Bostall Hill	455	0.28
	26608	Cassilda Road	190	0.12
	26606	Bostall Gardens	297	0.18
	26604	McLeod Road / Bostall Lane	226	0.14
	26602	Greening Street	263	0.16
	35305	Conference Road	197	0.12
ABWDSN	BP6416	Abbey Wood Station	331	0.21
	33045	Harrow Manorway / Lensbury Way	380	0.24
	34813	Newacres Library	399	0.25
	34918	Carlisle Road / Bentham Road	718	0.45
THMDCP	36531	Poplar Place	332	0.21
	36530	Curlew Close	301	0.19
	37181	Lister Walk	133	0.08
	36676	Manordene Road	461	0.29
	36522	Nickelby Close	394	0.24
	36529	Hoveton Road	285	0.18
	36670	Linton Mead Primary School	353	0.22
	BP1582	Thamesmead Town Centre	545	0.34
THMDBC	36668	Gallions Reach Health Centre	240	0.15
	35921	Hawksmoor School	224	0.14
	35922	Southwood Road	254	0.16
THMDTA	35926	Titmuss Avenue	392	0.24
Total Route Mileage - Out Direction			28269	17.57
			Metres	Miles

irt Road Station, New Oxford Street - Thamesmead, Titmussue/Disraeli Close	Tranche 845
New Contract	

BACK DIRECTION				
Timing Point Code	Stop Number	Stop Name	Metres	Miles
THMDDC	35918	Titmuss Avenue		
	R0748	Southwood Road	306	0.19
	35920	Hawksmoor School	261	0.16
	36667	Gallions Reach Health Centre	289	0.18
THMDTC	BP1582	Thamesmead Town Centre	337	0.21
	36669	Linton Mead Primary School	310	0.19
	36673	Hoveton Road	373	0.23
	36674	Nickelby Close	227	0.14
	36675	Eastgate Close	539	0.33
	36677	Lister Walk	343	0.21
THMDCF	36678	Poplar Place	351	0.22
	35406	Carlyle Road / Crossway	378	0.23
	34812	Newacres Library	646	0.40
	33040	Harrow Manorway / Yarrton Way	404	0.25
	33041	Overton Road	200	0.12
ABWDSN	35309	Harrow Manorway / Abbey Wood Station	299	0.19
	35306	Conference Road	395	0.25
	26603	Greening Street	224	0.14
	26605	McLeod Road / Bostall Lane	295	0.18
	26607	Bostall Gardens	194	0.12
	26609	Cassilda Road	247	0.15
	9170	Basilidon Road / Bostall Hill	186	0.12
	26615	Plumstead Corner / Rockmount Road	453	0.28
	26617	Plumstead High Street / The Plumstead Ce	340	0.21
	26619	Bannockburn Road	220	0.14
	26621	Lakedale Road	204	0.13
PLUMSN	36510	Plumstead Road / Plumstead Station	554	0.34
	34579	Greenwich Community College	245	0.15
	8931	Maxey Road	229	0.14
WOOLPR	BP4397	Plumstead Road / Woolwich Public Market	404	0.25
	3681	Beresford Sq / Woolwich Arsenal Stn	171	0.11
	26687	Woolwich Ferry	551	0.34
	26693	Kingsman Street	507	0.32
	18834	Prospect Vale	302	0.19
	18832	Warspite Road	341	0.21
	29687	Clevey Close	337	0.21
	14452	Greenwich Trust School	131	0.08
	34292	Woolwich Road / Charlton Lane	229	0.14
	BP2409	Stone Lake Retail Park	156	0.10
CHARAH	18828	Charlton Station / Woolwich Road	272	0.17
	10439	Woolwich Road / Gallions Road	325	0.20
	29161	Woolwich Road / Victoria Way	178	0.11
	18822	Rainton Road	209	0.13
	34401	Kensing Road	524	0.33
	18821	Marlton Street	174	0.11
	19620	Calvert Road	148	0.09
EGRNVH	20627	Vanbrugh Hill	170	0.11
	13829	Tyler Street	224	0.14
	13827	Trafalgar Road / Maze Hill	425	0.26
	13825	Trafalgar Estate	214	0.13
	26707	National Maritime Museum	322	0.20
GNCHCH	25906	Greenwich Church Street	244	0.15
	25908	Creek Road / Norman Road	299	0.19
	25910	Creekside	295	0.18
	25912	Macmillan Students Village	275	0.17
	25915	Deptford High Street	412	0.26
	25917	Abinger Grove	342	0.21
	25918	Deptford Fire Station	271	0.17
	2224	Deptford Park School	430	0.27
	25920	Bestwood Street	303	0.19
	13638	Bush Road	305	0.19
SRQYSN	BP2413	Warndon Street	329	0.20
	13627	Corbetts Lane	357	0.22
	1213	Rotherhithe New Rd / Sth Bermondsey Stn	302	0.19
	13660	Lynton Road	248	0.15
	26207	Anchor Street	195	0.12
SPKRSJ	26205	Southwark Park Road / St James's Road	289	0.18
	13650	Reverdy Road	348	0.22
GRRDDR	13648	Alsot Road	395	0.25
	1129	Spa Road	304	0.19
	1208	Grange Road / Caledonian Market	371	0.23
	4610	Bricklayer's Arms / Tower Bridge Road	182	0.11
	34288	Bricklayer's Arms / New Kent Road	515	0.32
	2573	Rodney Place	314	0.20
	33627	Elephant & Castle / New Kent Road	295	0.18
ELEFLN	BP3718	Elephant & Castle / London Road	266	0.17
	2596	St George's Circus	580	0.36
	1048	The Old Vic	204	0.13
WLOOTW	BP1619	Waterloo Station / Tenison Way	493	0.31
	25893	Waterloo Bridge / South Bank	236	0.15
AWCHLP	36886	Lancaster Place	532	0.33
	36599	Aldwych / Kingsway	316	0.20
HOLBSN	455	Holborn Station	498	0.31
	BP1340	Drury Lane	348	0.22
TCTRES	BP883	Tottenham Court Road	370	0.23
Total Route Mileage - Back Direction			26826	16.67
			Metres	Miles