

## 7. Service Specification

Route: 24 & N24

Contract Reference: QC66001

This Service Specification forms section 7 of the ITT and should be read in conjunction with the ITT document, Version 1 dated 29 September 2011.

You are formally invited to tender for the provision of the bus service detailed below and in accordance with this Service Specification. Tenderers must ensure that a Compliant Tender is submitted and this will only be considered for evaluation if all parts of the Tender documents, as set out in section 11, have been received by the Corporation by the Date of Tender. The Tender must be fully completed in the required format, in accordance with the Instructions to Tenderers. A Compliant Tender must comply fully with the requirements of the Framework Agreement; adhere to the requirements of the Service Specification; and reflect the price of operating the Services with new vehicles.

<b>Terminus Points</b>	Pimlico, Grosvenor Road and Hampstead Heath, South End Green
<b>Contract Basis</b>	Incentivised
<b>Commencement Date</b>	9 <sup>th</sup> November 2019
<b>Vehicle Type</b>	<b>Option A:</b> New 87 capacity, dual door, double deck diesel-electric hybrid vehicles.  <b>Option B:</b> Existing New Routemaster (NRM) (see attached letter).
<b>Current Maximum Approved Dimensions</b>	11.3 metres long and 2.55 metres wide
<b>New Vehicles Mandatory</b>	Yes
<b>Hybrid Price Required</b>	Yes
<b>Sponsored Route</b>	No
<b>Advertising Rights</b>	<b>Option A:</b> Operator <b>Option B:</b> Operator (External), LBSL (Internal)
<b>Minimum Performance Standard - Route No. 24 (Both Options)</b>	Average Excess Wait Time - No more than 1.30 minutes
<b>Extension Threshold - Route No. 24 (Both Options)</b>	Average Excess Wait Time Threshold - 1.20 minutes
<b>Minimum Operated Mileage Standard - Route No. 24 (Both Options)</b>	No less than 98%
<b>Departing On Time - Route No. N24 (Both Options)</b>	Departing on Time - No less than 86%
<b>Minimum Operated Mileage Standard - Route No. N24 (Both Options)</b>	No less than 99%

The Date of Tender for this ITT is:  
No later than 12 Noon on Monday 26<sup>th</sup> November 2018

*Tenderers should refer to section 3 of Part A for the Service Specification Explanatory Notes and Appendix B of section 5 for the Example Service Specification of the ITT document.*

## **SERVICE SPECIFICATION**

- 1) SERVICE SPEC - ROUTE SPECIFICATION INFORMATION
- 2) NOTES
- 3) SCHEDULE REQUIREMENTS & PINCHPOINTS
- 4) OPERATIONAL CONSIDERATIONS
- 5) ROUTE RECORD, CURRENT PERFORMANCE, QSI BY TIME OF DAY, IBUS MILEAGE & QSI POINTS

## 2) NOTES

### **Proposed Changes:**

At this time, the Corporation expects to implement a change to the existing service prior to the commencement of the new Route Agreement for Route Nos. 24 & N24.

- From March 2019, Route Nos. 24 & N24 will operate via Tottenham Court Road and Charing Cross Road in both directions.
- **Please see Section 5 for a full list of streets traversed and standing arrangements**

Tenderers should note that the following alterations (subject to consultation) are proposed as part of this Service Specification for introduction with the new Route Agreement:

Two options are specified:

### **Option 1**

- No changes proposed.

### **Option 2**

- Ex Pimlico, Grosvenor Road, Route Nos. 24 & N24 are rerouted to operate directly between Wilton Road and Victoria Station via Allington Street from March 2019.
- **Please see Section 5 for a full list of streets traversed and standing arrangements**

### **Options 1 & 2**

- The designation Route No. N24 is used for contractual purposes only. This service will be marketed as Route No. 24. This includes all publicity, including destination blind displays
- **Tenderers must identify the cost of the Nightly element of this service separately.**

**The Mayor and Transport for London (TfL) have developed a proposal for an Ultra Low Emission Zone (ULEZ) in Central London.**

**The ULEZ is planned to take effect during the life of this contract and will apply 24 hours a day, 7 days a week. All double deck buses operating for TfL within the zone will be required to be hybrid (to Euro VI or better emissions standard).**

**Operators should provide the following prices:**

- 1. Annual diesel-electric hybrid price - based on minimum 5 year contract.**
- 2. Annual existing NRM price - based on minimum 5 year contract.**

**Tenderers are encouraged to offer alternative vehicle options in accordance with Part 9 of their tender, including but not limited to:**

- 1. Vehicles that offer genuine increased capacity and are certified as such.**
- 2. Modifications to reduce emissions and fuel consumption (including energy storage, engine stop/start, extended zero-emission range and/or energy efficient components)**
- 3. Existing vehicles. Separate costs must be provided both excluding and including the cost of upgrading to Euro VI standards. The inclusive costs should be on a per bus per annum basis. Please note that existing diesel vehicles will NOT be considered for routes which are already operated by hybrids.**

### 3) SCHEDULE REQUIREMENTS & PINCHPOINTS

#### 3.1) MONDAY TO FRIDAY SCHEDULE REQUIREMENTS & PINCHPOINTS OPTIONS 1 & 2

Pimlico, Grosvenor Road to Hampstead Heath, South End Green			Hampstead Heath, South End Green to Pimlico, Grosvenor Road		
First departure no later than 0530.			First departure no later than 0445.		
0525 - 0645	Every 15 minutes		0440 - 0530	Every 15 minutes	
0646 - 2100	Every 10 minutes		0531 - 0755	Every 10 minutes	
2101 - 2400	Every 12 minutes		0756 - 0855	Every 8-9 minutes (7 buses per hour)	
0001 - 0105	Every 15 minutes		0856 - 2000	Every 10 minutes	
			2001 - 2300	Every 12 minutes	
			2301 - 0020	Every 15 minutes	
Last departure no earlier than 0100.			Last departure no earlier than 0015.		
<b>Pinchpoints</b>					
Warren Street Station	0710 - 0900	10 minutes	Trafalgar Square, East Side	0710 - 0840	10 minutes
	1500 - 1630	10 minutes		0841 - 0900	9 minutes
				1500 - 1635	10 minutes

#### 3.2) SATURDAY AND GOOD FRIDAY SCHEDULE REQUIREMENTS & PINCHPOINTS OPTIONS 1 & 2

Pimlico, Grosvenor Road to Hampstead Heath, South End Green			Hampstead Heath, South End Green to Pimlico, Grosvenor Road		
First departure no later than 0530.			First departure no later than 0445.		
0525 - 0715	Every 15 minutes		0440 - 0630	Every 15 minutes	
0716 - 0750	Every 12 minutes		0631 - 0710	Every 12 minutes	
0751 - 2000	Every 10 minutes		0711 - 1900	Every 10 minutes	
2001 - 2400	Every 12 minutes		1901 - 2300	Every 12 minutes	
0001 - 0105	Every 15 minutes		2301 - 0020	Every 15 minutes	
Last departure no earlier than 0100.			Last departure no earlier than 0015.		
<b>Pinchpoints</b>					
Warren Street Station	0930 - 1100	10 minutes	Trafalgar Square, East Side	0930 - 1100	10 minutes

**3) SCHEDULE REQUIREMENTS & PINCHPOINTS - continued**

**3.3) SUNDAY AND PUBLIC HOLIDAYS (EXCEPT GOOD FRIDAY AND CHRISTMAS DAY) SCHEDULE REQUIREMENTS & PINCHPOINTS  
OPTIONS 1 & 2**

Pimlico, Grosvenor Road to Hampstead Heath, South End Green			Hampstead Heath, South End Green to Pimlico, Grosvenor Road		
First departure no later than 0530.			First departure no later than 0445.		
0525 - 0745	Every 15 minutes		0440 - 0700	Every 15 minutes	
0746 - 2400	Every 12 minutes		0701 - 2300	Every 12 minutes	
0001 - 0105	Every 15 minutes		2301 - 0020	Every 15 minutes	
Last departure no earlier than 0100.			Last departure no earlier than 0015.		
<b>Pinchpoints</b>					
Warren Street Station	1045 - 1145	12 minutes	Trafalgar Square, East Side	1035 - 1155	12 minutes

**Tenderers must identify the cost of the Boxing Day element of this service separately.**

**3.4) NIGHTLY  
OPTIONS 1 & 2**

Pimlico, Grosvenor Road to Hampstead Heath, South End Green			Hampstead Heath, South End Green to Pimlico, Grosvenor Road		
First departure no later than 0115.			First departure no later than 0030.		
0110 - 0520	Every 30 minutes		0025 - 0435	Every 30 minutes	
Last departure no earlier than 0515.			Last departure no earlier than 0430.		

**Tenderers must identify the cost of the Nightly element of this service separately.**

#### **4) OPERATIONAL CONSIDERATIONS**

- 4.1) Route No. N24 should interwork with Route No. 24 to form a seamless 24 hour service.
- 4.2) Route No. 24 can suffer from unpredictable traffic delays throughout central London and in particular in the Tottenham Court Road and Camden areas (particularly on Sundays due to Camden Market).
- 4.3) Route Nos. 24 & N24 currently carry passengers across the Pimlico stand working. Therefore, passengers boarding at Lupus Street, Churchill Gardens intending to travel towards Hampstead Heath can remain on the bus at the stand. It is expected that this arrangement will continue under the new contract.
- 4.4) The central section of the Elizabeth line between Paddington and Abbey Wood is expected to open in Autumn 2019 and 3 separate services will operate from Paddington to Abbey Wood, from Paddington to Heathrow and from Liverpool Street to Shenfield. The full Elizabeth line service will operate from Reading and Heathrow to Shenfield and Abbey Wood and is expected to commence as soon after the central tunnels open as possible. There is potential for a change in passenger demand once the line becomes fully operational. A review, post opening of the Elizabeth line, will be undertaken if required.
- 4.5) The Victoria Station Upgrade (VSU) project is a scheme to enhance station capacity and relieve congestion. The project is due to finish in March 2019.

**5) ROUTE RECORD, CURRENT PERFORMANCE, QSI BY TIME OF DAY,  
IBUS MILEAGE & QSI POINTS**

5.1) ROUTE RECORD  
As per Busnet printout.

5.2) CURRENT PERFORMANCE  
As per current print out.

5.3) QSI BY TIME OF DAY  
As per current print out.

5.4) IBUS MILEAGE & QSI POINTS  
As per current print out.



## LONDON BUSES - ROUTE DESCRIPTION

### **ROUTE 24: Pimlico, Grosvenor Road - Hampstead Heath, South End Green (24 hour service)**

**Date of Structural Change:** 9 November 2019.

**Date of Service Change:** 9 November 2019.

**Reason for Issue:** New Tender - Option 1.

#### **STREETS TRAVERSED**

**Towards Hampstead Heath, South End Green:** Grosvenor Road, Claverton Street, Lupus Street, St George's Square, Belgrave Road, Denbigh Street, Wilton Road, Victoria Street, Grosvenor Gardens, Lower Grosvenor Place, Bressenden Place, Victoria Street, Broad Sanctuary, Parliament Square, Parliament Street, Whitehall, Charing Cross, Trafalgar Square (South Side), Trafalgar Square (East Side), St Martin's Place, Charing Cross Road, Tottenham Court Road, Hampstead Road, Camden High Street, Chalk Farm Road, Ferdinand Street, Malden Crescent, Malden Road, Southampton Road, Fleet Road.

**Towards Pimlico, Grosvenor Road:** South End Green [Eastern Arm], Constantine Road, Agincourt Road, Southampton Road, Malden Road, Malden Crescent, Ferdinand Street, Chalk Farm Road, Castlehaven Road, Hawley Road, Camden Street, Camden Road, Bayham Street, Crowndale Road, Hampstead Road, Harrington Square (East And South Sides), Hampstead Road, Euston Road, Tottenham Court Road, Charing Cross Road, St Martin's Place, Trafalgar Square (East Side), Charing Cross, Whitehall, Parliament Street, Parliament Square, Broad Sanctuary, Victoria Street, Vauxhall Bridge Road, Neathouse Place, Wilton Road, Denbigh Street, Belgrave Road, St George's Square, Lupus Street, Grosvenor Road.

## **AUTHORISED STANDS, CURTAILMENT POINTS, & BLIND DESCRIPTIONS**

Please note that only stands, curtailment points, & blind descriptions as detailed in this contractual document may be used.

### **PIMLICO, GROSVENOR ROAD**

Public stand on north side of Grosvenor Road, commencing 48 metres west of Paxton Terrace and extending 27 metres west.

Buses proceed from Grosvenor Road direct to stand, departing to Grosvenor Road. Set down in Grosvenor Road, at stop CM (BP3192 - Grosvenor Road, Last Stop on LOR: BP3192 - Grosvenor Road) and pick up in Grosvenor Road, at stop CM (BP3192 - Grosvenor Road, First Stop on LOR: BP3192 - Grosvenor Road).

AVAILABILITY:	At any time.
OPERATING RESTRICTIONS:	No more than 2 buses on Route 24 should be scheduled to stand at any one time.
MEAL RELIEFS:	No meal relief vehicles to stand at any time.
FERRY VEHICLES:	No ferry vehicles to park on stand at any time.
BLIND DISPLAY:	Pimlico.
OTHER INFORMATION:	Drivers must allow passenger boarding along the Pimlico loop to remain on the bus at the stand, if they wish to travel towards Victoria (or beyond). No toilet facilities currently available.

### **VICTORIA, VAUXHALL BRIDGE ROAD (WEST)**

From Hampstead Heath, South End Green.

Buses proceed from Vauxhall Bridge Road via Neathouse Place departing to Wilton Road. Set down in Vauxhall Bridge Road, at Stop U (BP5380 - Victoria Station <> #, Last Stop on LOR: BP5380 - Victoria Station <> #) and pick up in Wilton Road, at Stop J (33478 - Victoria Station <>#, First Stop on LOR: 33445 - Victoria Station <>#).

From Pimlico, Grosvenor Road.

Buses proceed from Wilton Road via Allington Street, Bressenden Place and Victoria Street departing to Vauxhall Bridge Road. Set down in Wilton Road, at Stop Z1 (33478 - Victoria Station <>#, Last Stop on LOR: 33445 - Victoria Station <>#) and pick up in Vauxhall Bridge Road, at Stop U (BP5380 - Victoria Station <> #, First Stop on LOR: BP5380 - Victoria Station <> #).

AVAILABILITY:	At any time.
OPERATING RESTRICTIONS:	<b>Turning Point Only - Buses must not stand</b>
BLIND DISPLAY:	Victoria.

### **PARLIAMENT SQUARE (from HAMPSTEAD HEATH, SOUTH END GREEN)**

Buses proceed from Whitehall via Parliament Street and Parliament Square departing to Parliament Street. Set down in Whitehall, at stop F (BP5568 - Westminster Stn <> / Parliament Square, Last Stop on LOR: BP5568 - Westminster Stn <> / Parliament Square) and pick up in Parliament Street, at stop C (1645 - Westminster Stn <> / Parliament Square, First Stop on LOR: 1645 - Westminster Stn <> / Parliament Square).

AVAILABILITY: At any time.  
OPERATING RESTRICTIONS: **Turning Point Only - Buses must not stand**  
BLIND DISPLAY: Parliament Square.

### **TRAFALGAR SQUARE (from HAMPSTEAD HEATH, SOUTH END GREEN)**

Buses proceed from Trafalgar Square (East Side) via Charing Cross and Trafalgar Square (South Side) departing to Trafalgar Square (East Side). Set down in Trafalgar Square (east Side), at stop D (143 - Trafalgar Square / Charing Cross Stn <>#, Last Stop on LOR: 143 - Trafalgar Square / Charing Cross Stn <>#) and pick up in Trafalgar Square (east Side), at stop C (BP3504 - Trafalgar Sq / Charing Cross Stn <> #, First Stop on LOR: BP3504 - Trafalgar Sq / Charing Cross Stn <> #).

AVAILABILITY: At any time.  
OPERATING RESTRICTIONS: **Turning Point Only - Buses must not stand**  
BLIND DISPLAY: Trafalgar Square.

### **CHENIES STREET (from Pimlico, Grosvenor Road)**

Buses proceed from Tottenham Court Road via Chenies Street departing to Gower Street. Set down in Tottenham Court Road, at stop E (BP2028 - Percy Street, Last Stop on LOR: BP2028 - Percy Street) and pick up in Gower Street, at stop D (29676 - Chenies Street, First Stop on LOR: 29676 - Chenies Street).

AVAILABILITY: At any time.  
OPERATING RESTRICTIONS: **Turning Point Only - Buses must not stand**  
BLIND DISPLAY: Tottenham Court Road.

### **TOTTENHAM COURT ROAD (from HAMPSTEAD HEATH, SOUTH END GREEN)**

Buses proceed from Bloomsbury Street via New Oxford Street departing to Tottenham Court Road. Set down in Bloomsbury Street, at stop R (29735 - Great Russell Street, Last Stop on LOR: 29735 - Great Russell Street) and pick up in Tottenham Court Road, at stop C (166 - Tottenham Court Road Station<>, First Stop on LOR: 166 - Tottenham Court Road Station<>).

AVAILABILITY: At any time.  
OPERATING RESTRICTIONS: **Turning Point Only - Buses must not stand**  
BLIND DISPLAY: Tottenham Court Road.

## **WARREN STREET STATION, UNIVERSITY COLLEGE HOSPITAL**

Public stand for four buses on nearside of slip road on south side of Euston Road between Tottenham Court Road and Gower Street, commencing 5 metres west of a point opposite lamp standard no. 301 extending 40 metres west.

### From Hampstead Heath, South End Green.

Buses proceed from Hampstead Road via Euston Road to stand, departing via Euston Road, Gower Street and Grafton Way to Tottenham Court Road. Set down in Hampstead Road, at stop R (33549 - Warren Street Station <> / Euston Road, Last Stop on LOR: 33549 - Warren Street Station <> / Euston Road) and pick up in Tottenham Court Road, at stop X (8348 - Warren Street Station <>, First Stop on LOR: 8348 - Warren Street Station <>).

### From Pimlico, Grosvenor Road.

Buses proceed from Tottenham Court Road via Euston Road to stand, departing via Euston Road to Gower Street. Set down in Tottenham Court Road, at stop X (8348 - Warren Street Station <>, Last Stop on LOR: 8348 - Warren Street Station <>) and pick up in Gower Street, at stop N (29674 - Gower Street / University College Hosp, First Stop on LOR: BP2167 - Torrington Place).

AVAILABILITY:	At any time.
OPERATING RESTRICTIONS:	Unscheduled curtailments only
MEAL RELIEFS:	No meal relief vehicles to stand at any time.
FERRY VEHICLES:	No ferry vehicles to park on stand at any time.
BLIND DISPLAY:	Warren Street.

## **MORNINGTON CRESCENT STATION (from HAMPSTEAD HEATH, SOUTH END GREEN)**

Public stand for two buses on east side (offside) of Hampstead Road, commencing 49 metres south of Harrington Square (north arm) and extending 26 metres south. Buses proceed from Harrington Square (East And South Sides) via Hampstead Road to stand, departing to Hampstead Road. Set down in Harrington Square, at stop C (33291 - Mornington Crescent Station <>, Last Stop on LOR: 33291 - Mornington Crescent Station <>) and pick up in Hampstead Road, at stop A (14639 - Mornington Crescent Station <>, First Stop on LOR: 14639 - Mornington Crescent Station <>).

AVAILABILITY:	At any time.
OPERATING RESTRICTIONS:	Unscheduled curtailments only.
MEAL RELIEFS:	No meal relief vehicles to stand at any time.
FERRY VEHICLES:	No ferry vehicles to park on stand at any time.
BLIND DISPLAY:	Mornington Crescent.

### **CAMDEN TOWN, CAMDEN GARDENS (from Pimlico, Grosvenor Road)**

Public stand for three buses on north side of Camden Gardens, commencing 3 metres west of Camden Street and extending 31 metres west to a point 3 metres east of Kentish Town Road.

Buses proceed from Camden High Street via Camden Road, Kentish Town Road and Camden Gardens to stand, departing via Camden Gardens and Camden Street to Camden Road. Set down in Camden High Street, at stop X (325 - Camden Town Station <>), Last Stop on LOR: 325 - Camden Town Station <>) and pick up in Camden Road, at stop S (324 - Camden Town Station <>), First Stop on LOR: 324 - Camden Town Station <>).

AVAILABILITY: At any time.  
OPERATING RESTRICTIONS: Unscheduled curtailments only.  
MEAL RELIEFS: No meal relief vehicles to stand at any time.  
FERRY VEHICLES: No ferry vehicles to park on stand at any time.  
BLIND DISPLAY: Camden Town.

### **CHALK FARM, MORRISONS, PETROL STATION (from Pimlico, Grosvenor Road)**

Public stand for two buses in slip road, commencing 30 metres south west of Chalk Farm Road and 55 metres north west of junction with Morrisons superstore access road opposite petrol station entrance, extending for 25 metres south east, at bus stop BP1806 point CH. Buses proceed from Chalk Farm Road via Morrisons Access Road to stand, departing via Morrisons Access Road to Chalk Farm Road. Set down in Chalk Farm Road, at stop CQ (33533 - Hartland Road / Camden Market, Last Stop on LOR: 33533 - Hartland Road / Camden Market) and pick up in Chalk Farm Road, at stop CE (11994 - Chalk Farm Road / Morrisons, First Stop on LOR: 11994 - Chalk Farm Road / Morrisons).

AVAILABILITY: At any time.  
OPERATING RESTRICTIONS: Unscheduled curtailments only  
MEAL RELIEFS: No meal relief vehicles to stand at any time.  
FERRY VEHICLES: No ferry vehicles to park on stand at any time.  
BLIND DISPLAY: Chalk Farm.

## **HAMPSTEAD HEATH, SOUTH END GREEN (EAST)**

Public stand on east side of South End Green, commencing 2 metres north of the entrance to the ladies lavatory and extending 30 metres north.

Buses proceed from Fleet Road via Pond Street, South End Road and South End Green [Eastern Arm] to stand, departing to South End Green [Eastern Arm]. Set down in Fleet Road, at Stop Z (11443 - Royal Free Hospital, Last Stop on LOR: 11443 - Royal Free Hospital) and pick up in South End Green [eastern Arm], at stop A (37425 - South End Green, First Stop on LOR: 37425 - South End Green).

AVAILABILITY:	At any time.
OPERATING RESTRICTIONS:	No more than 3 buses on Route 24 should be scheduled to stand at any one time.
MEAL RELIEFS:	By arrangement.
FERRY VEHICLES:	By arrangement.
BLIND DISPLAY:	Hampstead Heath.
OTHER INFORMATION:	LBSL toilets available 24 hours.

## LONDON BUSES - ROUTE DESCRIPTION

### **ROUTE 24: Pimlico, Grosvenor Road - Hampstead Heath, South End Green (24 hour service)**

**Date of Structural Change:** 10 November 2019.

**Date of Service Change:** 10 November 2019.

**Reason for Issue:** New Tender - Option 2.

#### **STREETS TRAVERSED**

**Towards Hampstead Heath, South End Green:** Grosvenor Road, Claverton Street, Lupus Street, St George's Square, Belgrave Road, Denbigh Street, Wilton Road, Allington Street, Bressenden Place, Victoria Street, Broad Sanctuary, Parliament Square, Parliament Street, Whitehall, Charing Cross, Trafalgar Square (South Side), Trafalgar Square (East Side), St Martin's Place, Charing Cross Road, Tottenham Court Road, Hampstead Road, Camden High Street, Chalk Farm Road, Ferdinand Street, Malden Crescent, Malden Road, Southampton Road, Fleet Road.

**Towards Pimlico, Grosvenor Road:** South End Green [Eastern Arm], Constantine Road, Agincourt Road, Southampton Road, Malden Road, Malden Crescent, Ferdinand Street, Chalk Farm Road, Castlehaven Road, Hawley Road, Camden Street, Camden Road, Bayham Street, Crowndale Road, Hampstead Road, Harrington Square (East And South Sides), Hampstead Road, Euston Road, Tottenham Court Road, Charing Cross Road, St Martin's Place, Trafalgar Square (East Side), Charing Cross, Whitehall, Parliament Street, Parliament Square, Broad Sanctuary, Victoria Street, Vauxhall Bridge Road, Neathouse Place, Wilton Road, Denbigh Street, Belgrave Road, St George's Square, Lupus Street, Grosvenor Road.

## **AUTHORISED STANDS, CURTAILMENT POINTS, & BLIND DESCRIPTIONS**

Please note that only stands, curtailment points, & blind descriptions as detailed in this contractual document may be used.

### **PIMLICO, GROSVENOR ROAD**

Public stand on north side of Grosvenor Road, commencing 48 metres west of Paxton Terrace and extending 27 metres west.

Buses proceed from Grosvenor Road direct to stand, departing to Grosvenor Road. Set down in Grosvenor Road, at stop CM (BP3192 - Grosvenor Road, Last Stop on LOR: BP3192 - Grosvenor Road) and pick up in Grosvenor Road, at stop CM (BP3192 - Grosvenor Road, First Stop on LOR: BP3192 - Grosvenor Road).

AVAILABILITY:	At any time.
OPERATING RESTRICTIONS:	No more than 2 buses on Route 24 should be scheduled to stand at any one time.
MEAL RELIEFS:	No meal relief vehicles to stand at any time.
FERRY VEHICLES:	No ferry vehicles to park on stand at any time.
BLIND DISPLAY:	Pimlico.
OTHER INFORMATION:	Drivers must allow passenger boarding along the Pimlico loop to remain on the bus at the stand, if they wish to travel towards Victoria (or beyond). No toilet facilities currently available.

### **VICTORIA, VAUXHALL BRIDGE ROAD (WEST)**

From Hampstead Heath, South End Green.

Buses proceed from Vauxhall Bridge Road via Neathouse Place departing to Wilton Road. Set down in Vauxhall Bridge Road, at Stop U (BP5380 - Victoria Station <> #, Last Stop on LOR: BP5380 - Victoria Station <> #) and pick up in Wilton Road, at Stop J (33478 - Victoria Station <>#, First Stop on LOR: 33445 - Victoria Station <>#).

From Pimlico, Grosvenor Road.

Buses proceed from Wilton Road via Allington Street, Bressenden Place and Victoria Street departing to Vauxhall Bridge Road. Set down in Wilton Road, at Stop Z1 (33478 - Victoria Station <>#, Last Stop on LOR: 33445 - Victoria Station <>#) and pick up in Vauxhall Bridge Road, at Stop U (BP5380 - Victoria Station <> #, First Stop on LOR: BP5380 - Victoria Station <> #).

AVAILABILITY:	At any time.
OPERATING RESTRICTIONS:	<b>Turning Point Only - Buses must not stand</b>
BLIND DISPLAY:	Victoria.



### **PARLIAMENT SQUARE (from HAMPSTEAD HEATH, SOUTH END GREEN)**

Buses proceed from Whitehall via Parliament Street and Parliament Square departing to Parliament Street. Set down in Whitehall, at stop F (BP5568 - Westminster Stn <> / Parliament Square, Last Stop on LOR: BP5568 - Westminster Stn <> / Parliament Square) and pick up in Parliament Street, at stop C (1645 - Westminster Stn <> / Parliament Square, First Stop on LOR: 1645 - Westminster Stn <> / Parliament Square).

AVAILABILITY: At any time.  
OPERATING RESTRICTIONS: **Turning Point Only - Buses must not stand**  
BLIND DISPLAY: Parliament Square.

### **TRAFALGAR SQUARE (from HAMPSTEAD HEATH, SOUTH END GREEN)**

Buses proceed from Trafalgar Square (East Side) via Charing Cross and Trafalgar Square (South Side) departing to Trafalgar Square (East Side). Set down in Trafalgar Square (east Side), at stop D (143 - Trafalgar Square / Charing Cross Stn <>#, Last Stop on LOR: 143 - Trafalgar Square / Charing Cross Stn <>#) and pick up in Trafalgar Square (east Side), at stop C (BP3504 - Trafalgar Sq / Charing Cross Stn <> #, First Stop on LOR: BP3504 - Trafalgar Sq / Charing Cross Stn <> #).

AVAILABILITY: At any time.  
OPERATING RESTRICTIONS: **Turning Point Only - Buses must not stand**  
BLIND DISPLAY: Trafalgar Square.

### **CHENIES STREET (from Pimlico, Grosvenor Road)**

Buses proceed from Tottenham Court Road via Chenies Street departing to Gower Street. Set down in Tottenham Court Road, at stop E (BP2028 - Percy Street, Last Stop on LOR: BP2028 - Percy Street) and pick up in Gower Street, at stop D (29676 - Chenies Street, First Stop on LOR: 29676 - Chenies Street).

AVAILABILITY: At any time.  
OPERATING RESTRICTIONS: **Turning Point Only - Buses must not stand**  
BLIND DISPLAY: Tottenham Court Road.

### **TOTTENHAM COURT ROAD (from HAMPSTEAD HEATH, SOUTH END GREEN)**

Buses proceed from Bloomsbury Street via New Oxford Street departing to Tottenham Court Road. Set down in Bloomsbury Street, at stop R (29735 - Great Russell Street, Last Stop on LOR: 29735 - Great Russell Street) and pick up in Tottenham Court Road, at stop C (166 - Tottenham Court Road Station<>, First Stop on LOR: 166 - Tottenham Court Road Station<>).

AVAILABILITY: At any time.  
OPERATING RESTRICTIONS: **Turning Point Only - Buses must not stand**  
BLIND DISPLAY: Tottenham Court Road.

## **WARREN STREET STATION, UNIVERSITY COLLEGE HOSPITAL**

Public stand for four buses on nearside of slip road on south side of Euston Road between Tottenham Court Road and Gower Street, commencing 5 metres west of a point opposite lamp standard no. 301 extending 40 metres west.

### From Hampstead Heath, South End Green.

Buses proceed from Hampstead Road via Euston Road to stand, departing via Euston Road, Gower Street and Grafton Way to Tottenham Court Road. Set down in Hampstead Road, at stop R (33549 - Warren Street Station <> / Euston Road, Last Stop on LOR: 33549 - Warren Street Station <> / Euston Road) and pick up in Tottenham Court Road, at stop X (8348 - Warren Street Station <>, First Stop on LOR: 8348 - Warren Street Station <>).

### From Pimlico, Grosvenor Road.

Buses proceed from Tottenham Court Road via Euston Road to stand, departing via Euston Road to Gower Street. Set down in Tottenham Court Road, at stop X (8348 - Warren Street Station <>, Last Stop on LOR: 8348 - Warren Street Station <>) and pick up in Gower Street, at stop N (29674 - Gower Street / University College Hosp, First Stop on LOR: BP2167 - Torrington Place).

AVAILABILITY:	At any time.
OPERATING RESTRICTIONS:	Unscheduled curtailments only
MEAL RELIEFS:	No meal relief vehicles to stand at any time.
FERRY VEHICLES:	No ferry vehicles to park on stand at any time.
BLIND DISPLAY:	Warren Street.

## **MORNINGTON CRESCENT STATION (from HAMPSTEAD HEATH, SOUTH END GREEN)**

Public stand for two buses on east side (offside) of Hampstead Road, commencing 49 metres south of Harrington Square (north arm) and extending 26 metres south. Buses proceed from Harrington Square (East And South Sides) via Hampstead Road to stand, departing to Hampstead Road. Set down in Harrington Square, at stop C (33291 - Mornington Crescent Station <>, Last Stop on LOR: 33291 - Mornington Crescent Station <>) and pick up in Hampstead Road, at stop A (14639 - Mornington Crescent Station <>, First Stop on LOR: 14639 - Mornington Crescent Station <>).

AVAILABILITY:	At any time.
OPERATING RESTRICTIONS:	Unscheduled curtailments only.
MEAL RELIEFS:	No meal relief vehicles to stand at any time.
FERRY VEHICLES:	No ferry vehicles to park on stand at any time.
BLIND DISPLAY:	Mornington Crescent.

### **CAMDEN TOWN, CAMDEN GARDENS (from Pimlico, Grosvenor Road)**

Public stand for three buses on north side of Camden Gardens, commencing 3 metres west of Camden Street and extending 31 metres west to a point 3 metres east of Kentish Town Road.

Buses proceed from Camden High Street via Camden Road, Kentish Town Road and Camden Gardens to stand, departing via Camden Gardens and Camden Street to Camden Road. Set down in Camden High Street, at stop X (325 - Camden Town Station <>), Last Stop on LOR: 325 - Camden Town Station <>) and pick up in Camden Road, at stop S (324 - Camden Town Station <>), First Stop on LOR: 324 - Camden Town Station <>).

AVAILABILITY: At any time.  
OPERATING RESTRICTIONS: Unscheduled curtailments only.  
MEAL RELIEFS: No meal relief vehicles to stand at any time.  
FERRY VEHICLES: No ferry vehicles to park on stand at any time.  
BLIND DISPLAY: Camden Town.

### **CHALK FARM, MORRISONS, PETROL STATION (from Pimlico, Grosvenor Road)**

Public stand for two buses in slip road, commencing 30 metres south west of Chalk Farm Road and 55 metres north west of junction with Morrisons superstore access road opposite petrol station entrance, extending for 25 metres south east, at bus stop BP1806 point CH. Buses proceed from Chalk Farm Road via Morrisons Access Road to stand, departing via Morrisons Access Road to Chalk Farm Road. Set down in Chalk Farm Road, at stop CQ (33533 - Hartland Road / Camden Market, Last Stop on LOR: 33533 - Hartland Road / Camden Market) and pick up in Chalk Farm Road, at stop CE (11994 - Chalk Farm Road / Morrisons, First Stop on LOR: 11994 - Chalk Farm Road / Morrisons).

AVAILABILITY: At any time.  
OPERATING RESTRICTIONS: Unscheduled curtailments only  
MEAL RELIEFS: No meal relief vehicles to stand at any time.  
FERRY VEHICLES: No ferry vehicles to park on stand at any time.  
BLIND DISPLAY: Chalk Farm.

## **HAMPSTEAD HEATH, SOUTH END GREEN (EAST)**

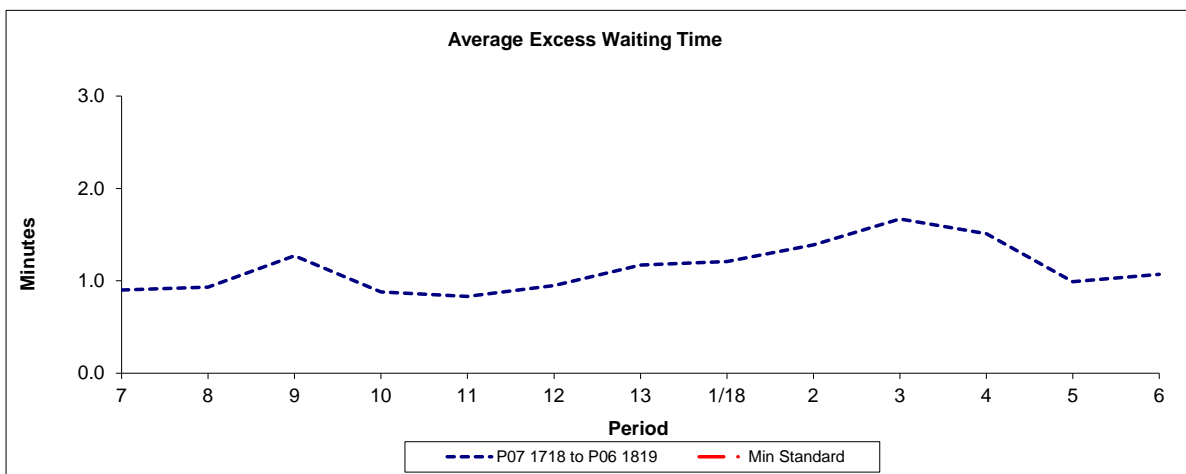
Public stand on east side of South End Green, commencing 2 metres north of the entrance to the ladies lavatory and extending 30 metres north.

Buses proceed from Fleet Road via Pond Street, South End Road and South End Green [Eastern Arm] to stand, departing to South End Green [Eastern Arm]. Set down in Fleet Road, at Stop Z (11443 - Royal Free Hospital, Last Stop on LOR: 11443 - Royal Free Hospital) and pick up in South End Green [eastern Arm], at stop A (37425 - South End Green, First Stop on LOR: 37425 - South End Green).

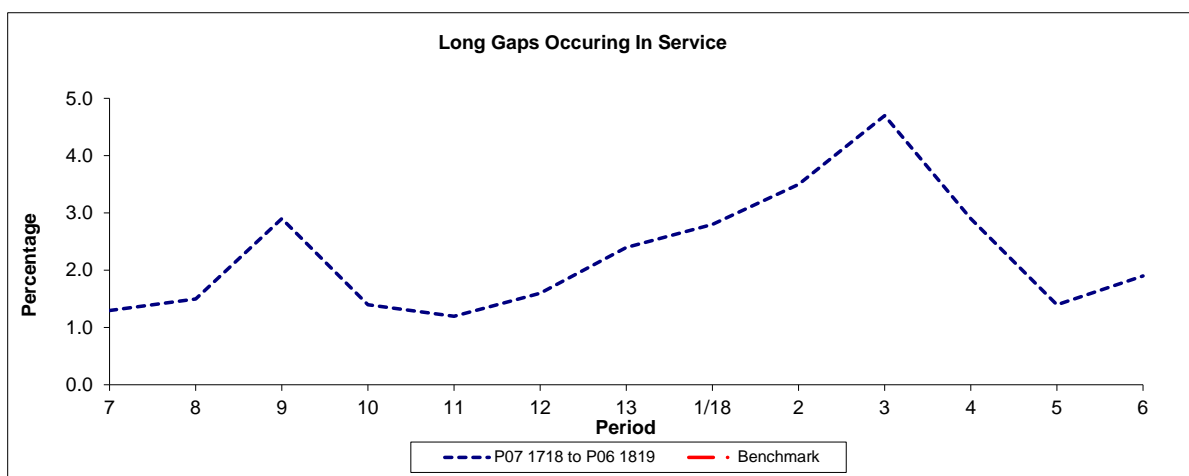
AVAILABILITY:	At any time.
OPERATING RESTRICTIONS:	No more than 3 buses on Route 24 should be scheduled to stand at any one time.
MEAL RELIEFS:	By arrangement.
FERRY VEHICLES:	By arrangement.
BLIND DISPLAY:	Hampstead Heath.
OTHER INFORMATION:	LBSL toilets available 24 hours.

**PART B - PERFORMANCE STATISTICS**

**Route 24**



Period	7	8	9	10	11	12	13	1/18	2	3	4	5	6
P07 1718 to P06 1819	0.90	0.93	1.27	0.88	0.83	0.95	1.17	1.21	1.39	1.67	1.51	0.99	1.07
Min Standard													

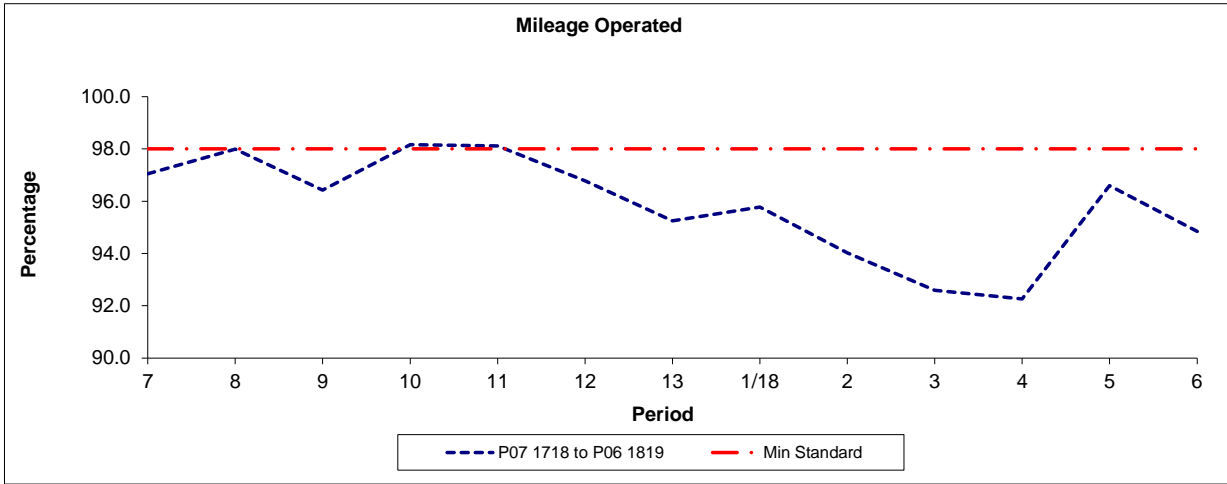


Period	7	8	9	10	11	12	13	1/18	2	3	4	5	6
P07 1718 to P06 1819	1.3	1.5	2.9	1.4	1.2	1.6	2.4	2.8	3.5	4.7	2.9	1.4	1.9
Benchmark													

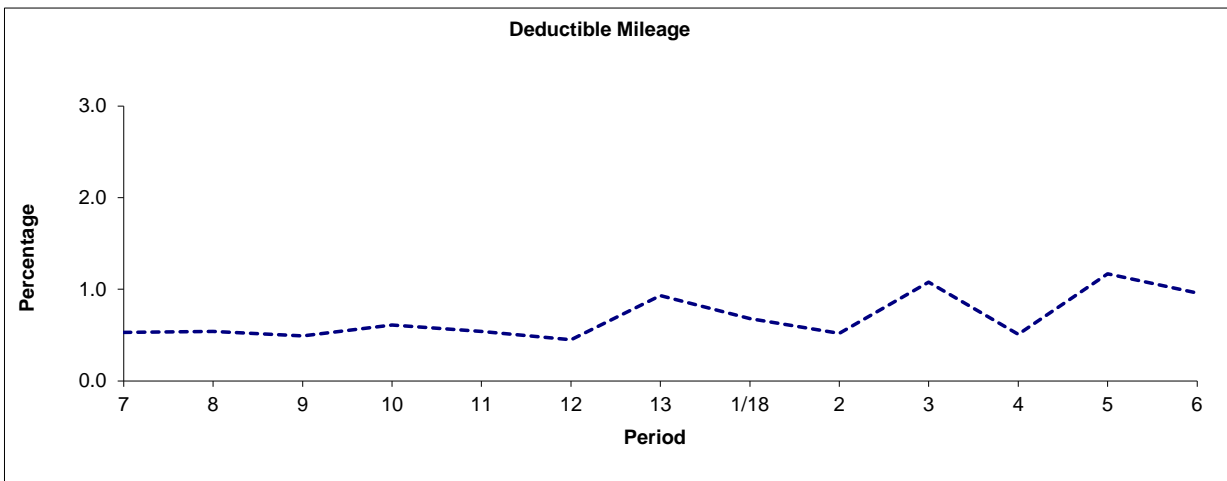
Note : Reliability is actual performance under full iBus (4 weeks data).  
Minimum Standards and Benchmarks are those applicable under the new contract.

**PART B - PERFORMANCE STATISTICS**

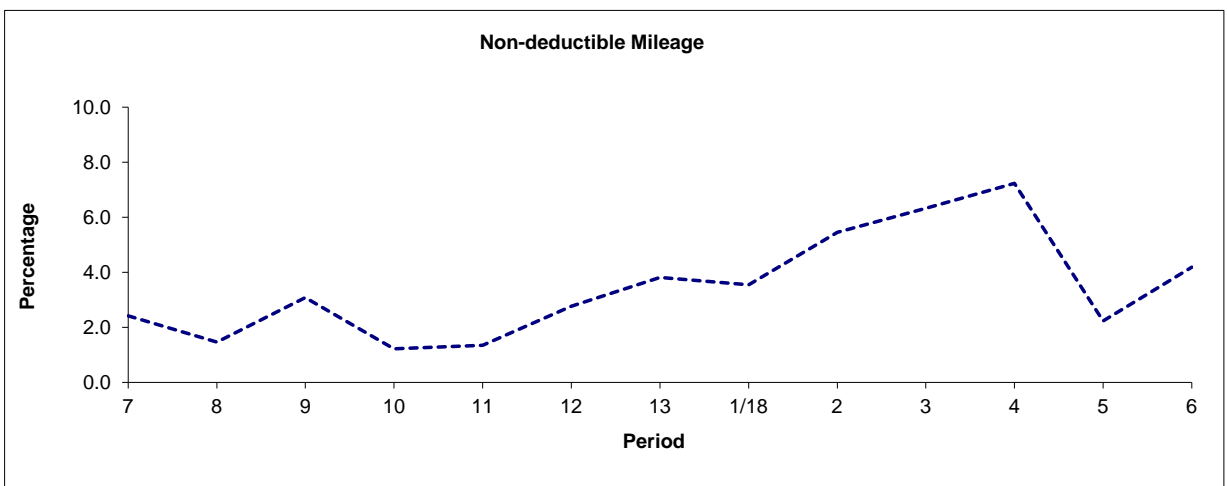
**Route 24**



Period	7	8	9	10	11	12	13	1/18	2	3	4	5	6
P07 1718 to P06 1819	97.05	97.99	96.42	98.16	98.11	96.78	95.25	95.77	94.03	92.59	92.26	96.60	94.85
Min Standard	98.00	98.00	98.00	98.00	98.00	98.00	98.00	98.00	98.00	98.00	98.00	98.00	98.00



Period	7	8	9	10	11	12	13	1/18	2	3	4	5	6
P07 1718 to P06 1819	0.53	0.54	0.49	0.61	0.54	0.45	0.93	0.68	0.52	1.08	0.51	1.17	0.96

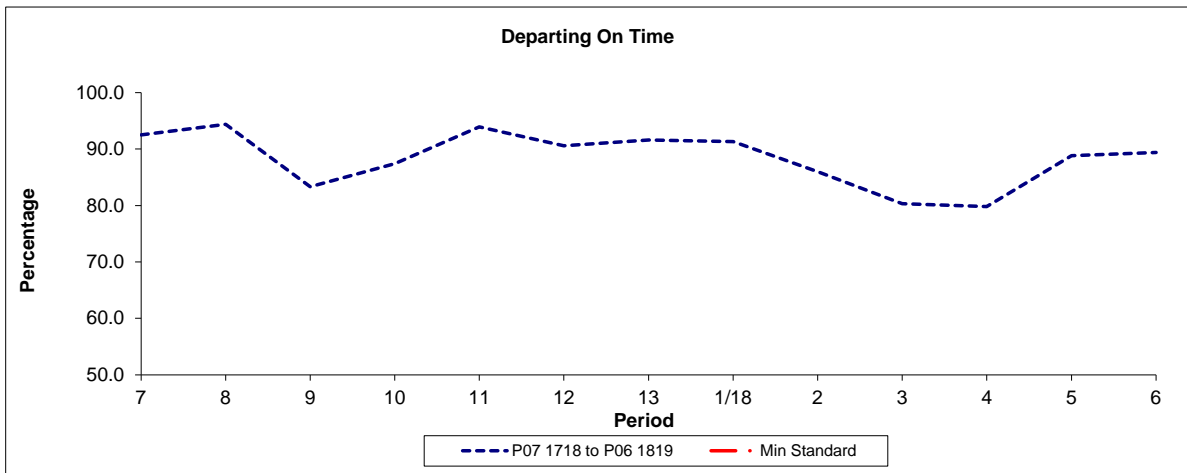


Period	7	8	9	10	11	12	13	1/18	2	3	4	5	6
P07 1718 to P06 1819	2.42	1.47	3.09	1.23	1.35	2.77	3.82	3.55	5.45	6.33	7.23	2.23	4.19

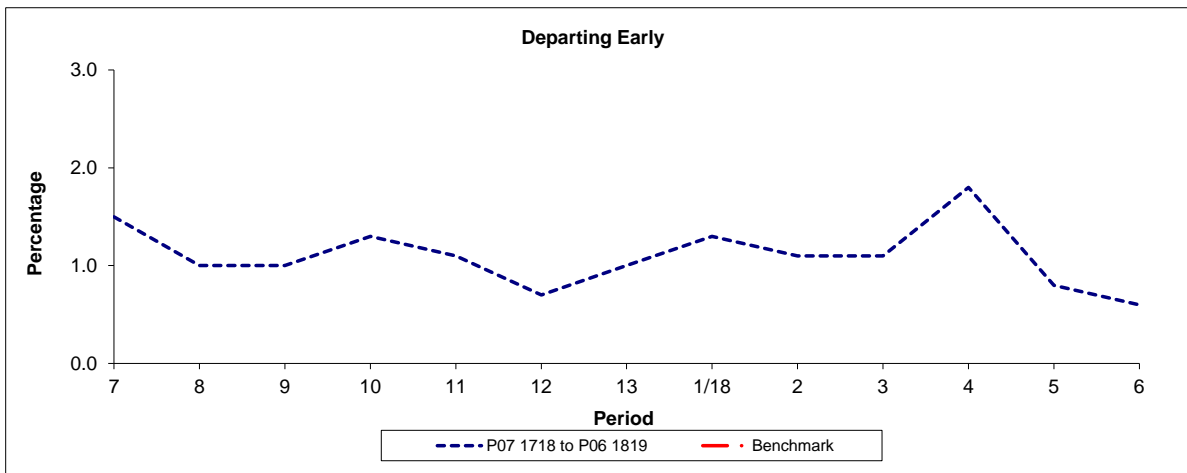
Note: Mileage is based on 4 weeks data

**PART B - PERFORMANCE STATISTICS**

**Route N24**



Period	7	8	9	10	11	12	13	1/18	2	3	4	5	6
P07 1718 to P06 1819	92.50	94.40	83.30	87.40	93.90	90.60	91.60	91.30	86.00	80.30	79.80	88.80	89.40
Min Standard													

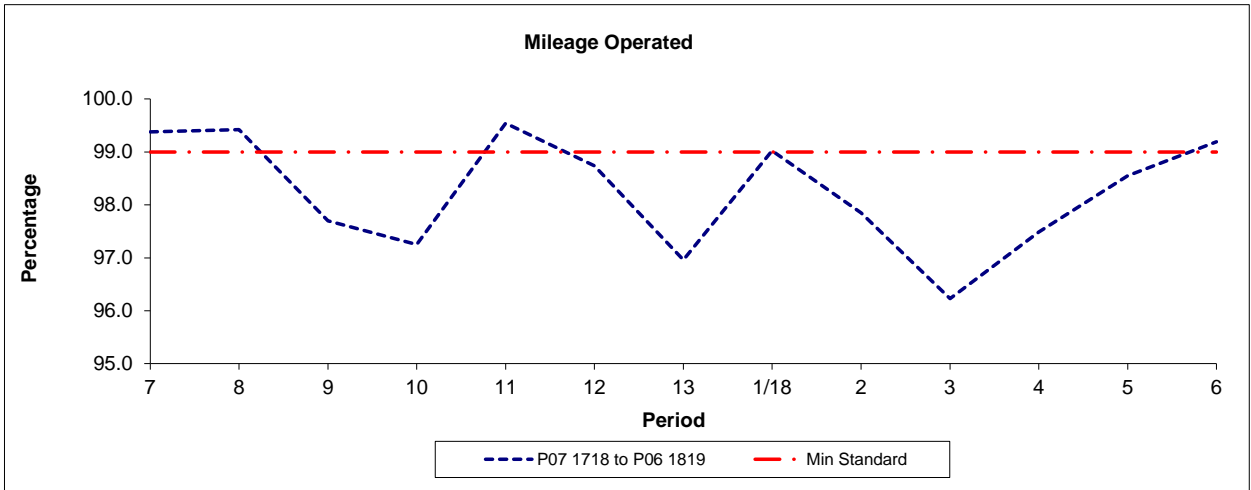


Period	7	8	9	10	11	12	13	1/18	2	3	4	5	6
P07 1718 to P06 1819	1.5	1.0	1.0	1.3	1.1	0.7	1.0	1.3	1.1	1.1	1.8	0.8	0.6
Benchmark													

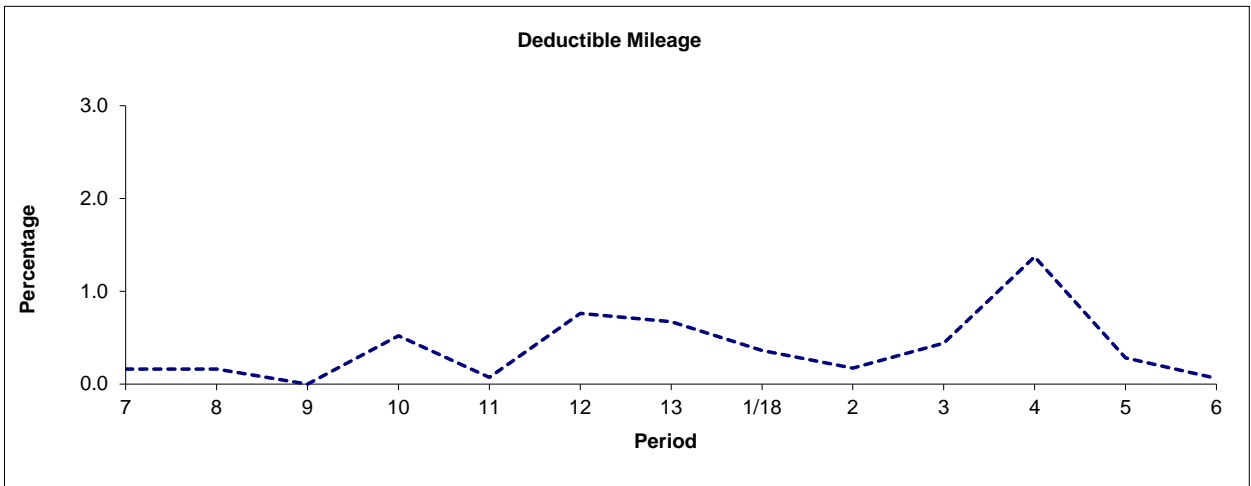
Note : Reliability is actual performance under full iBus (4 weeks data).  
Minimum Standards and Benchmarks are those applicable under the new contract.

**PART B - PERFORMANCE STATISTICS**

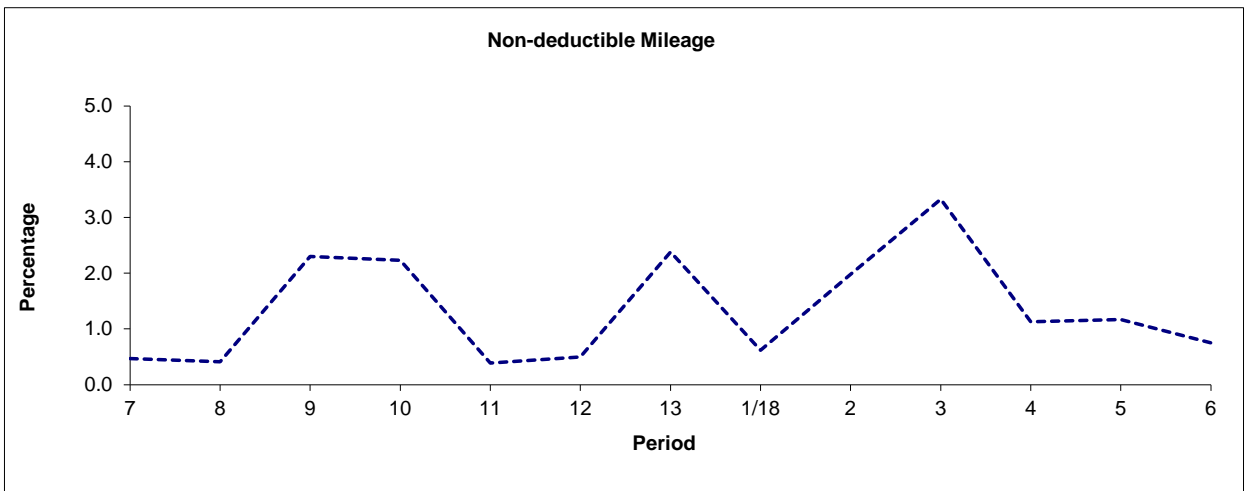
**Route N24**



Period	7	8	9	10	11	12	13	1/18	2	3	4	5	6
P07 1718 to P06 1819	99.38	99.42	97.70	97.25	99.54	98.74	96.96	99.02	97.85	96.23	97.49	98.55	99.19
Min Standard	99.00	99.00	99.00	99.00	99.00	99.00	99.00	99.00	99.00	99.00	99.00	99.00	99.00



Period	7	8	9	10	11	12	13	1/18	2	3	4	5	6
P07 1718 to P06 1819	0.16	0.16	0.00	0.52	0.07	0.76	0.67	0.36	0.17	0.44	1.37	0.28	0.06



Period	7	8	9	10	11	12	13	1/18	2	3	4	5	6
P07 1718 to P06 1819	0.47	0.41	2.30	2.23	0.39	0.50	2.38	0.62	1.98	3.33	1.13	1.17	0.75

Note: Mileage is based on 4 weeks data



**ROUTE 24 - FULL IBUS RESULTS BY TIME OF DAY**  
**QUARTERS 03/17 to 02/18 (16/09/17 - 14/09/18)**

**MONDAY - FRIDAY**

Time Range	Expected Buses	Observed Buses	Observed Buses (%)	SWT (mins)	EWT (mins)	AWT (mins)	Probability of Waiting < 10 mins (%)	Probability of Waiting 10-20 mins (%)	Probability of Waiting 20-30 mins (%)	Probability of Waiting > 30 mins (%)	Long Gaps (%)	Maximum Gap (mins)
05:00 - 07:00	31,895	30,576	95.9	5.83	<b>0.63</b>	6.45	80.8	18.5	0.7	0.0	0.3	42.0
07:00 - 10:00	77,908	74,922	96.2	4.39	<b>0.86</b>	5.25	88.3	10.9	0.7	0.2	1.5	63.2
10:00 - 13:00	78,021	71,674	91.9	4.22	<b>1.64</b>	5.86	82.7	14.8	1.9	0.6	4.3	79.0
13:00 - 16:00	76,822	74,404	96.9	4.22	<b>1.44</b>	5.66	85.3	12.9	1.5	0.3	3.2	82.4
16:00 - 19:00	78,936	76,673	97.1	4.23	<b>1.09</b>	5.31	87.6	11.3	0.9	0.2	2.1	54.2
19:00 - 22:00	76,107	75,387	99.1	4.36	<b>0.98</b>	5.34	87.6	11.6	0.7	0.1	1.7	58.8
22:00 - 24:00	41,493	40,319	97.2	5.27	<b>1.03</b>	6.31	79.5	19.2	1.2	0.1	1.1	69.5
<b>All Locations Summary</b>	<b>461,182</b>	<b>443,955</b>	<b>96.3</b>	<b>4.38</b>	<b>1.16</b>	<b>5.54</b>	<b>85.9</b>	<b>12.7</b>	<b>1.1</b>	<b>0.3</b>	<b>2.4</b>	<b>82.4</b>

**SATURDAY**

Time Range	Expected Buses	Observed Buses	Observed Buses (%)	SWT (mins)	EWT (mins)	AWT (mins)	Probability of Waiting < 10 mins (%)	Probability of Waiting 10-20 mins (%)	Probability of Waiting 20-30 mins (%)	Probability of Waiting > 30 mins (%)	Long Gaps (%)	Maximum Gap (mins)
05:00 - 07:00	5,121	5,009	97.8	7.32	<b>0.79</b>	8.11	68.0	30.0	1.6	0.4	0.7	49.4
07:00 - 10:00	14,313	13,650	95.4	4.83	<b>0.88</b>	5.71	85.2	13.9	0.7	0.1	0.9	46.8
10:00 - 13:00	14,491	14,282	98.6	4.28	<b>0.95</b>	5.23	88.6	10.4	0.8	0.2	1.8	59.2
13:00 - 16:00	12,725	12,267	96.4	4.20	<b>1.16</b>	5.36	88.0	10.8	1.0	0.3	2.5	55.5
16:00 - 19:00	14,468	13,589	93.9	4.13	<b>1.39</b>	5.53	86.6	11.9	1.3	0.3	3.2	63.3
19:00 - 22:00	14,028	13,397	95.5	4.67	<b>1.78</b>	6.45	78.3	19.0	2.2	0.4	4.1	58.8
22:00 - 24:00	8,134	7,945	97.7	5.42	<b>1.67</b>	7.10	72.7	23.2	3.4	0.6	2.9	45.9
<b>All Locations Summary</b>	<b>83,280</b>	<b>80,139</b>	<b>96.2</b>	<b>4.52</b>	<b>1.24</b>	<b>5.76</b>	<b>84.5</b>	<b>13.9</b>	<b>1.3</b>	<b>0.3</b>	<b>2.5</b>	<b>63.3</b>

**SUNDAY AND BANK HOLIDAYS**

Time Range	Expected Buses	Observed Buses	Observed Buses (%)	SWT (mins)	EWT (mins)	AWT (mins)	Probability of Waiting < 10 mins (%)	Probability of Waiting 10-20 mins (%)	Probability of Waiting 20-30 mins (%)	Probability of Waiting > 30 mins (%)	Long Gaps (%)	Maximum Gap (mins)
05:00 - 07:00	5,040	4,943	98.1	7.50	<b>0.74</b>	8.23	64.4	32.0	2.8	0.7	1.0	43.3
07:00 - 10:00	13,282	12,967	97.6	5.46	<b>0.92</b>	6.38	81.7	16.9	1.3	0.1	0.7	47.9
10:00 - 13:00	14,362	14,223	99.0	4.91	<b>0.71</b>	5.62	86.6	12.6	0.6	0.2	0.7	46.8
13:00 - 16:00	15,018	14,749	98.2	4.63	<b>0.85</b>	5.48	87.1	11.8	0.9	0.2	1.4	59.5
16:00 - 19:00	15,632	15,262	97.6	4.62	<b>0.93</b>	5.55	86.6	12.4	0.8	0.1	1.5	47.1
19:00 - 22:00	14,930	14,939	100.1	5.03	<b>0.85</b>	5.88	84.6	14.3	0.8	0.3	1.1	61.3
22:00 - 24:00	9,575	9,334	97.5	5.34	<b>0.62</b>	5.96	83.1	16.3	0.5	0.1	0.4	45.4
<b>All Locations Summary</b>	<b>87,839</b>	<b>86,417</b>	<b>98.4</b>	<b>4.94</b>	<b>0.83</b>	<b>5.77</b>	<b>85.1</b>	<b>13.8</b>	<b>0.9</b>	<b>0.2</b>	<b>1.1</b>	<b>61.3</b>

**ALL DAYS**

Time Range	Expected Buses	Observed Buses	Observed Buses (%)	SWT (mins)	EWT (mins)	AWT (mins)	Probability of Waiting < 10 mins (%)	Probability of Waiting 10-20 mins (%)	Probability of Waiting 20-30 mins (%)	Probability of Waiting > 30 mins (%)	Long Gaps (%)	Maximum Gap (mins)
05:00 - 07:00	42,056	40,528	96.4	6.09	<b>0.65</b>	6.74	78.4	20.5	1.0	0.1	0.4	49.4
07:00 - 10:00	105,503	101,539	96.2	4.48	<b>0.87</b>	5.34	87.7	11.4	0.7	0.2	1.4	63.2
10:00 - 13:00	106,874	100,179	93.7	4.31	<b>1.43</b>	5.74	84.0	13.9	1.6	0.5	3.5	79.0
13:00 - 16:00	104,565	101,420	97.0	4.26	<b>1.34</b>	5.60	85.8	12.5	1.4	0.3	2.9	82.4
16:00 - 19:00	109,036	105,524	96.8	4.25	<b>1.11</b>	5.36	87.4	11.4	1.0	0.2	2.2	63.3
19:00 - 22:00	105,065	103,723	98.7	4.49	<b>1.07</b>	5.56	85.9	13.0	1.0	0.2	2.0	61.3
22:00 - 24:00	59,202	57,598	97.3	5.31	<b>1.09</b>	6.40	78.8	19.5	1.5	0.2	1.3	69.5
<b>All Locations Summary</b>	<b>632,301</b>	<b>610,511</b>	<b>96.6</b>	<b>4.45</b>	<b>1.14</b>	<b>5.59</b>	<b>85.7</b>	<b>12.9</b>	<b>1.1</b>	<b>0.3</b>	<b>2.3</b>	<b>82.4</b>

**ROUTE N24 - FULL iBUS RESULTS BY TIME OF DAY**  
**QUARTERS 03/17 to 02/18 (16/09/17 - 14/09/18)**

**MONDAY - FRIDAY**

Time Range	Expected Buses	Observed Buses	Observed Buses (%)	Linked Buses (%)	On Time (%)	Non Arrival / Not Linked (%)	Early (%)	Late (%)
00:00 - 05:00	31,131	30,274	97.2	97.6	88.1	2.6	1.5	7.8
<b>All Locations Summary</b>	<b>31,131</b>	<b>30,274</b>	<b>97.2</b>	<b>97.6</b>	<b>88.1</b>	<b>2.6</b>	<b>1.5</b>	<b>7.8</b>

**SATURDAY**

Time Range	Expected Buses	Observed Buses	Observed Buses (%)	Linked Buses (%)	On Time (%)	Non Arrival / Not Linked (%)	Early (%)	Late (%)
00:00 - 05:00	6,798	6,698	98.5	98.3	93.3	1.5	0.6	4.6
<b>All Locations Summary</b>	<b>6,798</b>	<b>6,698</b>	<b>98.5</b>	<b>98.3</b>	<b>93.3</b>	<b>1.5</b>	<b>0.6</b>	<b>4.6</b>

**SUNDAY AND BANK HOLIDAYS**

Time Range	Expected Buses	Observed Buses	Observed Buses (%)	Linked Buses (%)	On Time (%)	Non Arrival / Not Linked (%)	Early (%)	Late (%)
00:00 - 05:00	7,198	6,999	97.2	96.9	84.7	4.0	0.6	10.7
<b>All Locations Summary</b>	<b>7,198</b>	<b>6,999</b>	<b>97.2</b>	<b>96.9</b>	<b>84.7</b>	<b>4.0</b>	<b>0.6</b>	<b>10.7</b>

**ALL DAYS**

Time Range	Expected Buses	Observed Buses	Observed Buses (%)	Linked Buses (%)	On Time (%)	Non Arrival / Not Linked (%)	Early (%)	Late (%)
00:00 - 05:00	45,127	43,971	97.4	97.6	88.4	2.7	1.1	7.8
<b>All Locations Summary</b>	<b>45,127</b>	<b>43,971</b>	<b>97.4</b>	<b>97.6</b>	<b>88.4</b>	<b>2.7</b>	<b>1.1</b>	<b>7.8</b>



Transport for London - Live Mileage List

v2.0 - Mileage directly imported from Caesar

Route: 24

Service Change: 50071  
Date: 23/06/2018

<b>Tranche 660</b>
<b>Option 2 - Re-Routed via Allington Street, Tottenham Court Road 2-way working</b>
<b>Reason for Issue</b>

QSI points are highlighted.

OUT DIRECTION				
Timing Point Code	Stop Number	Stop Name	Metres	Miles
PIMLGR	BP3192	Grosvenor Road		
	20976	Grosvenor Road	141	0.09
	7825	Claverton Street / Churchill Gardens	391	0.24
	8396	Pimlico Academy & Library	181	0.11
PIMLSG	7815	St George's Square / Pimlico Station	365	0.23
	9813	Belgrave Road	272	0.17
	7827	Warwick Way	332	0.21
VCSNWR	33445	Victoria Station	238	0.15
	14973	Westminster Cathedral	567	0.35
	20434	Westminster City Hall	241	0.15
	7863	St James's Park Station	127	0.08
	20179	Westminster Abbey	312	0.19
	1645	Westminster Stn / Parliament Square	487	0.30
	7867	Horse Guards Parade	285	0.18
TFSQES	BP3504	Trafalgar Sq / Charing Cross Stn	541	0.34
	7823	Leicester Square Station	286	0.18
	37643	Cambridge Circus	228	0.14
	29684	Denmark Street	215	0.13
TCTRCC		Tottenham Court Road Station		
WARRST		Warren Street Station		
	675	Hampstead Road / Drummond Street	1440	0.89
	1276	Robert Street	164	0.10
	1278	Silverdale	383	0.24
MNCRSN	14639	Mornington Crescent Station	367	0.23
	1280	Camden High Street	305	0.19
CDTNSN	325	Camden Town Station	245	0.15
	33533	Hartland Road / Camden Market	546	0.34
	11427	Ferdinand Street	315	0.20
	11431	Prince Of Wales Road	158	0.10
	11734	Malden Road	143	0.09
MTPKMR	11435	Queen's Crescent	243	0.15
	2698	St Dominic's Priory	388	0.24
	11439	Mansfield Road	211	0.13
	11442	Lawn Road	300	0.19
HHTHSE	11443	Royal Free Hospital	278	0.17
Total Route Mileage - Out Direction			10695	6.65
			Metres	Miles

BACK DIRECTION				
Timing Point Code	Stop Number	Stop Name	Metres	Miles
HHTHSE	37425	South End Green		
	11767	Cressy Road	251	0.16
	11440	Mansfield Road	223	0.14
	11437	St Dominic's Priory	237	0.15
	11436	Grafton Terrace	288	0.18
MTPKMR	BP3884	Queen's Crescent	200	0.12
	11432	Prince Of Wales Road	281	0.17
	11428	Ferdinand Street	318	0.20
	11994	Chalk Farm Road / Morrisons	152	0.09
	33259	Hayley Road	437	0.27
	33096	Camden Gardens	220	0.14
CDTNSN	324	Camden Town Station	308	0.19
	33260	Pratt Street	353	0.22
MNCRSN	33291	Mornington Crescent Station	547	0.34
	1277	Silverdale	365	0.23
	1275	Robert Street	357	0.22
WARRST	33549	Warren Street Station / Euston Road	203	0.13
TCTRCC		Tottenham Court Road Station / Charing Cross Road		
	R0085	Cambridge Circus	1520	0.94
	7824	Leicester Square Station	221	0.14
	BP3536	St Martin's Place	209	0.13
TFSQES	143	Trafalgar Square / Charing Cross Stn	201	0.12
	152	Whitehall / Trafalgar Square	224	0.14
	R0470	Horse Guards Parade	234	0.15
	BP5568	Westminster Stn / Parliament Square	210	0.13
	128	Great Smith Street / Westminster Abbey	662	0.41
	7864	St James's Park Station	262	0.16
	20472	Westminster City Hall	212	0.13
VCSTWC	7861	Westminster Cathedral / Victoria Stn	257	0.16
	BP5380	Victoria Station	139	0.09
	7871	Warwick Way	432	0.27
	7814	Belgrave Road	278	0.17
PIMLSG	7816	St George's Square / Pimlico Station	291	0.18
	8395	Pimlico Academy & Library	233	0.14
	7838	Alderney Street	164	0.10
	BP4392	Winchester Street	189	0.12
	70	Westmoreland Terrace	261	0.16
PIMLGR	BP3192	Grosvenor Road	268	0.17
Total Route Mileage - Back Direction			11207	6.96
			Metres	Miles

Mileages highlighted in Red are a planning estimate only.

Transport for London - Live Mileage List

v2.0 - Mileage directly imported from Caesar

Route: 24

Service Change: 50071  
Date: 23/06/2018

<b>Tranche 660</b>
<b>Option 3 - Existing routing - Southbound via Gower Street Re-routed northbound via Allington Street</b>
<b>Reason for Issue</b>

QSI points are highlighted.

OUT DIRECTION				
Timing Point Code	Stop Number	Stop Name	Metres	Miles
PIMLGR	BP3192	Grosvenor Road		
	20976	Grosvenor Road	141	0.09
	7825	Claverton Street / Churchill Gardens	391	0.24
	8396	Pimlico Academy & Library	181	0.11
PIMLSG	7815	St George's Square / Pimlico Station	365	0.23
	9813	Belgrave Road	272	0.17
	7827	Warwick Way	332	0.21
VCSNWR	33445	Victoria Station	238	0.15
	14973	Westminster Cathedral	1157	0.72
	20434	Westminster City Hall	241	0.15
	7863	St James's Park Station	127	0.08
	20179	Westminster Abbey	312	0.19
	1645	Westminster Stn / Parliament Square	487	0.30
	7867	Horse Guards Parade	285	0.18
TFSQES	BP3504	Trafalgar Sq / Charing Cross Stn	541	0.34
	7823	Leicester Square Station	286	0.18
	37643	Cambridge Circus	228	0.14
	29684	Denmark Street	215	0.13
TCTRTC	166	Tottenham Court Road Station	350	0.22
	BP2028	Percy Street	215	0.13
	660	Goodge Street Station	288	0.18
WARRST	8348	Warren Street Station	375	0.23
	675	Hampstead Road / Drummond Street	214	0.13
	1276	Robert Street	164	0.10
	1278	Silverdale	383	0.24
MNCRSN	14639	Mornington Crescent Station	367	0.23
	1280	Camden High Street	305	0.19
CDTNSN	325	Camden Town Station	245	0.15
	33533	Hartland Road / Camden Market	546	0.34
	11427	Ferdinand Street	315	0.20
	11431	Prince Of Wales Road	158	0.10
	11734	Malden Road	143	0.09
MTPKMR	11435	Queen's Crescent	243	0.15
	2698	St Dominic's Priory	388	0.24
	11439	Mansfield Road	211	0.13
	11442	Lawn Road	300	0.19
HHTHSE	11443	Royal Free Hospital	278	0.17
Total Route Mileage - Out Direction			11287	7.01
			Metres	Miles

BACK DIRECTION				
Timing Point Code	Stop Number	Stop Name	Metres	Miles
HHTHSE	37425	South End Green		
	11767	Cressy Road	251	0.16
	11440	Mansfield Road	223	0.14
	11437	St Dominic's Priory	237	0.15
	11436	Grafton Terrace	288	0.18
MTPKMR	BP3884	Queen's Crescent	200	0.12
	11432	Prince Of Wales Road	281	0.17
	11428	Ferdinand Street	318	0.20
	11994	Chalk Farm Road / Morrisons	152	0.09
	33259	Hayley Road	437	0.27
	33096	Camden Gardens	220	0.14
CDTNSN	324	Camden Town Station	308	0.19
	33260	Pratt Street	353	0.22
MNCRSN	33291	Mornington Crescent Station	547	0.34
	1277	Silverdale	365	0.23
	1275	Robert Street	357	0.22
WARRST	33549	Warren Street Station / Euston Road	203	0.13
	29674	Gower Street / University College Hosp	428	0.27
	BP2167	Torrington Place	160	0.10
	29676	Chenies Street	229	0.14
	29735	Great Russell Street	379	0.24
TCTRSG	BP5283	Tottenham Court Road Station	490	0.30
	R0085	Cambridge Circus	313	0.19
	7824	Leicester Square Station	221	0.14
	BP3536	St Martin's Place	209	0.13
TFSQES	143	Trafalgar Square / Charing Cross Stn	201	0.12
	152	Whitehall / Trafalgar Square	224	0.14
	R0470	Horse Guards Parade	234	0.15
	BP5568	Westminster Stn / Parliament Square	210	0.13
	128	Great Smith Street / Westminster Abbey	662	0.41
	7864	St James's Park Station	262	0.16
	20472	Westminster City Hall	212	0.13
VCSTWC	7861	Westminster Cathedral / Victoria Stn	257	0.16
	BP5380	Victoria Station	139	0.09
	7871	Warwick Way	432	0.27
	7814	Belgrave Road	278	0.17
PIMLSG	7816	St George's Square / Pimlico Station	291	0.18
	8395	Pimlico Academy & Library	233	0.14
	7838	Alderney Street	164	0.10
	BP4392	Winchester Street	189	0.12
	70	Westmoreland Terrace	261	0.16
PIMLGR	BP3192	Grosvenor Road	268	0.17
Total Route Mileage - Back Direction			11686	7.26
			Metres	Miles